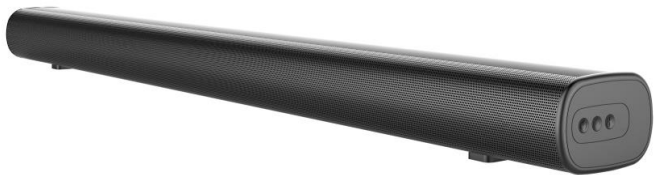


# User Manual



The picture is for reference only, If there is any error with the actual machine, please refer to the actual product.

# Contents

1. Preface-----	2
2. Accessory-----	2
3. Product introduction-----	3
4. Attention-----	3
5. Product panel introduction-----	4
6. Operation instruction-----	8
7. Device compatibility-----	12
8. Main technical specification-----	12
9. Simple trouble solutions -----	13

# 1. Preface

## To customers

Welcome to purchase our 2.0 soundbar system! We are very grateful for your patronage! In order to fully utilize your device's functions, please read this instruction manual carefully before use.

This will make it easy for you to master the connection methods and key points. You will also find that we have made various explorations to meet your requirements in terms of design, manufacturing process, and humanization of operation, etc. Keep this manual properly.

Please keep this manual in a safe place for future reference.

## Open the package

Please carefully open the package, confirm the following accessories, and place them in one place to prevent lose.



## 2. Accessory

- |  |      |
|--|------|
| <input type="checkbox"/> Soundbar            | 1pc  |
| <input type="checkbox"/> User Manual         | 1pc  |
| <input type="checkbox"/> Remote Control      | 1pc  |
| <input type="checkbox"/> Power Adaptor       | 1pc  |
| <input type="checkbox"/> 3.5mm to RCA Cable  | 1pc  |
| <input type="checkbox"/> Wall mount brackets | 1set |

### 3. Product introduction

This soundbar system supports Bluetooth playback, optical fiber decoding, HDMI(ARC) input, and external audio source input and amplification. It adopts digital signal processing technology and is suitable for music playing in different environments such as offices and homes.

### 4. Attention

Thank you for purchasing our products.

Please read the instruction before using this product and use it correctly. For better service, the contents of this user's manual may change without further notice due to changes in product performance and functionality.

In order to maintain good performance, do not use in places that are too cold, too hot, dusty or humid.

More attention should be paid to the following situations:

1. Humid or under water
2. Heater or high temperature
3. Exposed to sunlight
4. Easy to fall
5. Do not disassemble the machine without authorization, otherwise the warranty will be lost.

#### Warning



1. Please pay attention to water, the product should not be exposed to water droplets or water splashing, and the body should not be placed with a liquid-filled item such as a vase to avoid accidents.

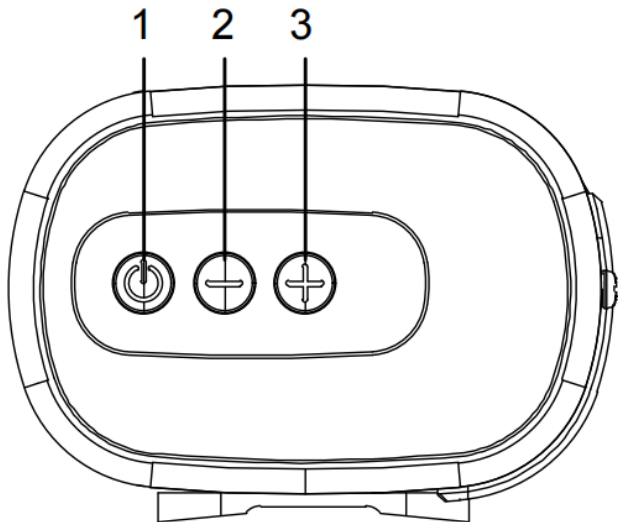





2. To avoid fire or electric shock, check whether the grid voltage is the same as the voltage specified on this machine.

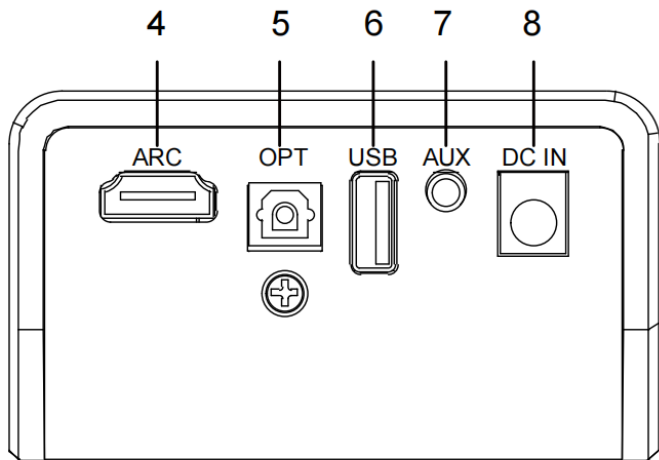
## 5. Product panel introduction

### Button and jack definition :

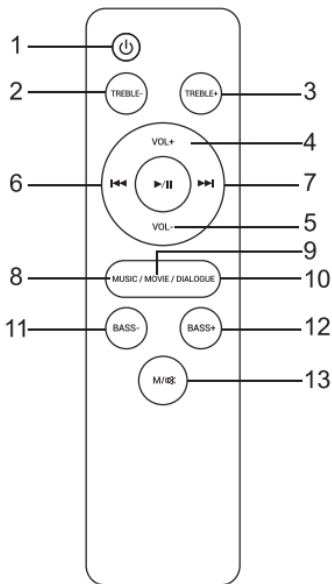
There are 3 buttons; there are 5 jacks, which are defined as follows :



1. : Short press to power on, short press to switch function, long press to power off
2. : Short press, long press to volume down
3. : Short press, long press to volume up



4. **ARC**: HDMI multimedia input
5. **OPT**: Optical input
6. **USB**: USB playback
7. **AUX**: 3.5mm line in jack for external audio input
8. **DC IN**: 24V/2.5A



## Function of each button

1. : Short press to power on and power off
2. **TREBLE-**: Press to decrease the treble effect.
3. **TREBLE+**: Press to increase the treble effect.
4. **VOL+**: Short or long press to turn the volume up and Short press to switch mute off if mute function is on.
5. **VOL-**: Short or long press to turn the volume down and Short press to switch mute off if mute function is on.

6. **⏮** : Short press to next song under Bluetooth, USB mode
7. **⏭** : Short press to previous song under Bluetooth, USB mode
8. **MOVIE**: Short press to select the MOVIE sound mode
9. **MUSIC**: Short press to select the MUSIC sound mode
10. **DIALOG**: Short press to select the DIALOG sound mode
11. **BASS-**: Press to decrease the bass effect and Short press to switch mute off, if mute function is on.
12. **BASS+**: Press to increase the bass effect and Short press to switch mute off, if mute function is on.
13. **M/🔊**: Long Press to switch mute function on or off /Short press to change Input source

### **Power on:**

Plug the power adaptor into the DC-in jack of the soundbar, and insert the other end of the power adaptor into socket. At this time, the power supply indicator of the machine is turned on, short press the “**⏻**” button on soundbar or remote control to turn it on, along with a voice prompt.

## **6. Operation instruction**

### ● **Bluetooth Mode**

After power on, the machine directly enters Bluetooth mode, along with voice prompt and the machine enters the pairing status automatically , with voice prompts and LED flashing.

- 1). Put the phone within 3 meters distance;



- 2). Activate the Bluetooth function of the device, so that the device starts to search for the Bluetooth device (please refer to the device instructions for details);
- 3). Select "SR250CI-32-80" from the device that has been searched for, click connection, with voice prompt;
- 4). If the device remind you to enter password, enter "0000" and press confirm button to match soundbar ;
- 5). Press the back button of the phone to exit the phone menu. Make sure the distance between soundbar and phone is within 10M and there is no obstacles. At this time, music can be played on the soundbar;
- 6). Short press "▶||" to play and pause music. Short press "◀" or "▶" button to previous or next song;
- 7). To disconnect, quick double click the "🔌" button on the machine or long press the "▶||" button on remote control, At this time, another device can be used to connect Bluetooth playing; If the connection is not selected, the machine will be on waiting for connection status.

### ● **AUX Mode**

After power on, connect external audio sources, such as CD/ TV to the 3.5MM LINE IN jack of the soundbar by using the 3.5mm cable or 3.5mm to RCA cable, and then short press the "🔌" button on the soundbar or the "M/🔊" button on the remote control to switch to "AUX" mode. At this time, music from the external audio sources can be played. (please adjust the

volume of the external sound source to be moderate and playing.)

### ● **HDMI Mode**

Short press the "⏻" button on the soundbar or "M/🔊" button on the remote control to switch to "HDMI" mode high-definition music decoding function. At this point, connect the HDMI high-definition decoding line to the TV set and then to the "ARC" jack on the back of the soundbar. Turn on the TV to power on the soundbar. Directly detect the digital signal transmitted by the TV to decode and restore the music play. (control the TV switch can control the soundbar switch directly).

**Note: Set TV audio format to PCM. Set TV sound mode to Fixed or Standard.**

### ● **OPTICAL Mode**

Short press the "⏻" button on the soundbar or "M/🔊" button on the remote control to switch to "OPTICAL" fiber decoding function. At this time, connect the DVD audio and equipment to Soundbar's "OPT" jack with the optical fiber digital wire. This machine decodes optical fiber digital to restore sound through power amplifier.

**Note: Set TV audio format to PCM. Set TV sound mode to Fixed or Standard.**

## **Volume and Sound effect regulation**

**A.** After power on, in any mode of playback, short press or long press the volume "-" button on the soundbar or remote control to decrease the volume. Short press or long press the volume "+" button on the soundbar or remote control to increase the volume.

**B.** After power on, in any mode of playback, short press the remote control to choose sound effect mode: MUSIC、MOVIE and DIALOG.

**Note:** 1. under MOVIE mode, there is no function when press "BASS(+, -)", "TREBLE ( +, -)"; Under MUSIC and DIALOG mode, It can adjust sound effect between positive and negative six grades when press "BASS (+, -)", "TREBLE (+, -)" on the remote control.

2.The user can adjust each kind of sound effect mode to enjoy the music according to the personal preference!

### **Power off:**

When the machine is power on, long press "⏻" button on soundbar or short press "⏻" button on remote control to power off, along with voice prompt, If unplugged the machine from power supply, the machine will be completely power off.

## **7. Device compatibility**

The machine theoretically supports all mobile phones with Bluetooth function and any related equipment connect to Bluetooth and play music.

## 8. Main technical specification

1. Bluetooth specification: V5.0
2. Bluetooth distance: Max distance $\geq$ 10m
3. Output power: 100W
4. Operating frequency range: 2.402GHz-2.480GHz

The product specifications and design may change without further notice!

## 9. Simple trouble solutions

Troubles	Solutions
Bluetooth paired connection cannot be completed	Other mobile device has connected before use and the mobile device has not left as well as its Bluetooth is not off. When it connects, Bluetooth of this device will automatically find the Bluetooth device and connect. First, turn off Bluetooth of the connected Bluetooth devices, then the next Bluetooth device can be found and normally paired to connect.

Volume of Bluetooth playback is low	1. After connections with mobile devices, volume of Bluetooth device is not up but at the default output level. Turn on the mobile device output. 2. Output volume of Bluetooth device is low itself.
Short Bluetooth connection distance	Obstruction exists between mobile devices and Bluetooth device. Remove obstructions.
Bluetooth connection plays normally, sometimes with broken sound.	1. Obstruction exists between mobile devices and Bluetooth device. Remove obstructions. 2. Too far away from Bluetooth device to connected devices, beyond the connection range. Shorten the distance between the Bluetooth device and mobile devices.
silent play after Bluetooth connection	After connections with mobile devices, Bluetooth device audio is off. Turn on the phone's output volume.

**Note:** As the above methods are all excluded, the device still cannot work, please notify the technician or the customer service!