

# Crompton

Cooling nahi,  
*jaldi cooling*



## COOLING SOLUTIONS 2023-24

**Crompton**



LET'S  
HANGOUT  
GHAR PE!





For more than 75 years, our brand has stood for trust, reliability, dependability and excellence in the area of electrical engineering. We endeavour to provide meaningful benefits, ease of use, great design, superior performance and durability at the right price for our customers. Our range of innovative products caters to modern consumer needs like easy to clean (Anti-Dust) Fans, easy to maintain Air Coolers, Hygienic Lighting solutions (Anti-Bac LEDs) Pumps and many more. Today we are Proud Indian Brand and a Market Leader\* in the Category of Fans with a strong presence in the other categories like pumps, water heaters, air coolers, kitchen appliances and lighting.

To enhance the comfort of its users, Crompton has launched a range of coolers with Superior Cooling Performance, Advance Technology, Consumer-Friendly and Healthy & Hygienic Environments. Combining it with service network of 365+ touch points all over India, Crompton strives to enhance cooling comfort for its consumers.

**Crompton**

Cooling nahi,  
*jaldi cooling.*





Crompton

Crompton

Manual Neo 23

HIGH  
LOW

Crompton

Jedi PAC 22

HIGH  
LOW

Crompton

Crompton

Crompton

OPTIMUS NEO 35

HIGH  
LOW

Crompton

OPTIMUS NEO 12

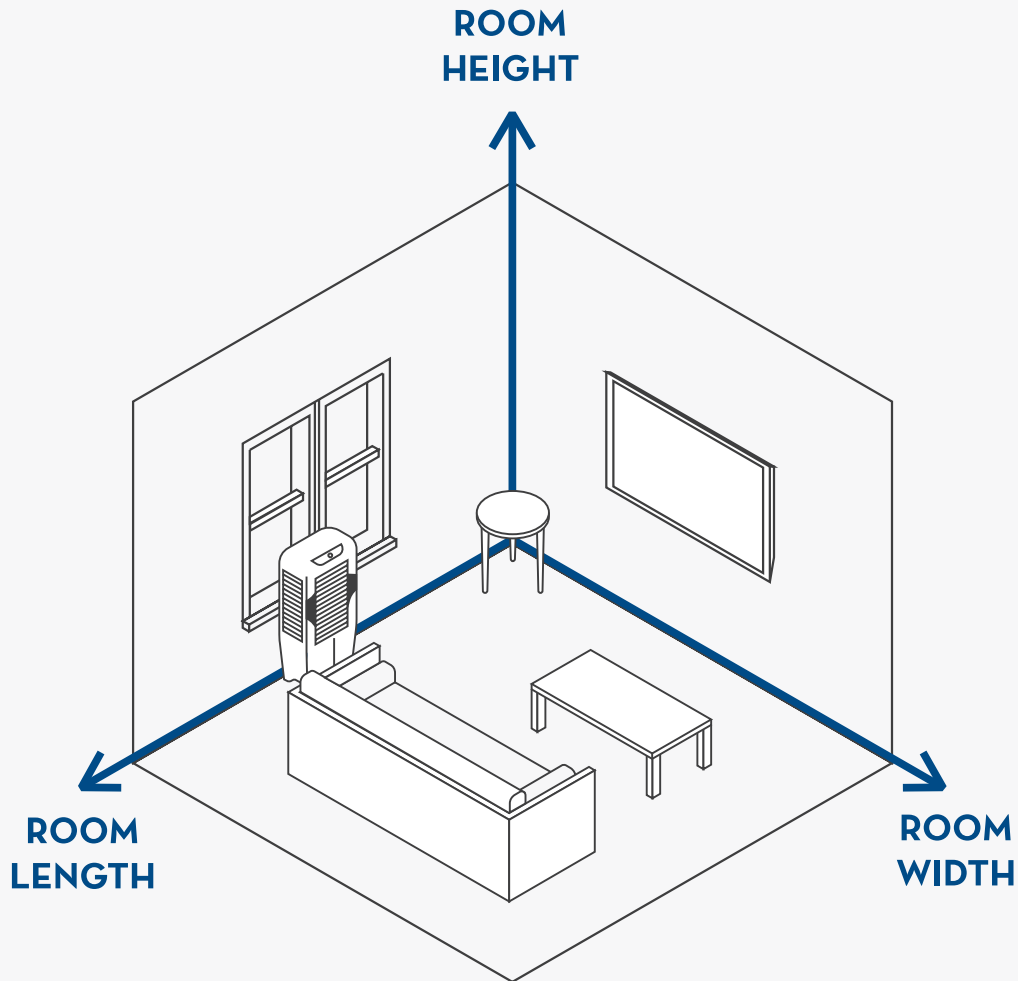
HIGH  
LOW

## CHOOSING THE RIGHT COOLER

The below pointers can assist you to arrive at the right model.

Selecting the right cooler for your place can be a bit tricky.

- Air Delivery denotes the total air in the room that gets changed every 2 minutes.
- Usually, air delivery is mentioned in cubic meter per hour (m<sup>3</sup>/hr).
- All you need to know is the length, width and height of your room to figure out how much air flow is needed in your room.



Use the below mentioned formula to calculate the air delivery required for your room:

$$\frac{\text{ROOM LENGTH} \times \text{ROOM WIDTH} \times \text{ROOM HEIGHT}}{2 \times 0.588578}$$

For example: If length, width and height of your room is 14ft, 12ft and 10ft respectively, then your requirement is  $14 \times 12 \times 10 / 2 / 0.588578 = 1427 \text{ m}^3/\text{hr}$ .

## WATER STORAGE CAPACITY CHART

To avoid inconvenience of filling the tank multiple times, follow the below table for ideal size of water storage capacity your cooler should have. This is an indicative chart. Certain coolers are provided with auto-fill systems for continuous water supply.

Area (in sq.ft)	Storage Capacity (in Ltrs.)
Upto 160	15
161 - 300	25
301 - 614	40
615 - 860	55+

## COOLING PADS

Coolers use two types of cooling pads:

### Honeycomb Cooling Pad



Honeycomb Cooling Pads are made of cellulose material. They are high density pads that can absorb and retain more water giving maximum cooling comfort. They have longer life and are low on maintenance.

### Wood Wool Cooling Pad



Wood Wool Cooling Pads are made from wood shavings. They are cheaper but need maintenance and have shorter life.

## INDEX



## DESERT COOLERS

---

Pg. 08

Desert Coolers are designed for large area coverage and comes with higher tank capacity. They work efficiently for long operational hours and provides higher air flow to maximise cooling in the harshest of summer. It can be used in houses, bungalows, flats, banquet halls, prayer houses, restaurants, etc.

Suitable for indoor and outdoor.

## PERSONAL COOLERS

---

Pg. 48

Personal coolers are compact and portable units that take care of your cooling needs in close proximity like study table, bed, sofa, dining table, kitchen office desk and shop counters. These coolers are essentially meant to provide cooling comfort to an individual.

Suitable for indoor.







## TOWER COOLERS

Pg. 62

Tower coolers are tall, sleek and compact, making it easier to slide into any corners of your house for achieving cooling comfort with air throw at desired height.

Suitable for indoor.

## WINDOW COOLERS

Pg. 70

Window coolers as the name suggests can be mounted on the window, enabling better cooling as fresh air gets sucked from outside. It doesn't block your space and occupies zero carpet area. With trolley, the cooler can be used as a portable unit.

Suitable for indoor and outdoor.



## INDUSTRIAL COOLERS

Pg. 76

Industrial Coolers are designed for large spaces like restaurants, marriage halls, hospital areas. It comes with big tank capacity, powerful fan with ball bearing technology. Strong build up coolers can work in robust weather conditions.

Suitable for outdoor.

Cooling nahi,  
*jaldi cooling*



# OPTIMUS DESERT COOLERS

Optimus desert coolers are crafted with deep insights into the cooling solution needs of the Indian market in large and extra-large areas. Designed with 18" fan that offers the highest air delivery to provide Superior & Jaldi Cooling. The coolers are provided with high density honeycomb pads and offers wide angle air throw, prolonged cooling and humidity controller. The mosquito nets and fully collapsible louvers prevent entering and breeding of mosquitoes while the auto-drain function allows for convenient draining of water. The cooler has one of the largest ice chambers in the segment and is equipped with an accessible distribution tray which helps in easy cleaning. Along with less noise, humidity control, auto drain, auto fill and easy manoeuvrability, makes Optimus desert series the best in the segment. The series is available in 65 and 100 litres capacity in manual operation. Two more variants with Digital operations using remote control and IoT enabled, voice control (Alexa & Google Home Certified) & mobile application enabled is available in 65L.

## List of Features:

- Highest Air Delivery with 18" Fan
- Everlast Pump - works even with hard water
- Large & Easy Clean Ice Chamber
- Humidity Control
- Auto Drain Function
- Mosquito Nets
- Easy Access Distribution Tray
- Auto Fill
- Prolonged Cooling
- Wider Angle Air Throw
- 4-Way Air Deflection
- Auto Swing Vertical Louvers
- Fully Collapsible Louvers
- High Density Honeycomb Pads
- Motor with Overload Protection
- Inverter Compatible
- 1 Year Warranty

# OPTIMUS 65IoT

Better Performance With Bearing Motor



65

litres capacity

5500

m<sup>3</sup>/hr air delivery

650

sq.ft area coverage

High Density Honeycomb Pads

Length : 705  
Width : 470  
Height : 1170  
(in mm)



**Smart IOT Enabled Operations**

For convenience and ease of use



Amazon Alexa



Google Home



**PureShield**

For healthy environment



Mobile App



**Best In Class Air Delivery**

Highest air flow in desert cooler segment

# OPTIMUS 65i

Better Performance With Bearing Motor



65  
litres capacity

5500  
m<sup>3</sup>/hr air delivery

650  
sq.ft area coverage

High Density  
Honeycomb Pads

Length : 705  
Width : 470  
Height : 1170  
(in mm)



**Digital Operations**  
For convenience and ease of use



**Best In Class Air Delivery**  
Highest air flow in desert cooler segment



**Humidity Control**  
Adjust cooling to your comfort



**EverLast Pump**  
Works even with hard water



**Auto Drain Function**  
For effortless water draining



**Large & Easy Clean Ice Chamber**  
For convenience & hygiene



**Auto-Fill**  
For continuous water feed

**NEW**  
**OPTIMUS COMFORT 65**

Better Performance With  
Bearing Motor



65  
litres capacity

5500  
m<sup>3</sup>/hr air delivery

650  
sq.ft area coverage

High Density  
Honeycomb Pads

Length : 705  
Width : 470  
Height : 1170  
(in mm)



**Best in Class Air Delivery**  
Highest air flow in desert cooler segment



**EverLast Pump**  
Works even with hard water



**Large & Easy Clean Ice Chamber**  
For convenience & hygiene



**Humidity Control**  
Adjust cooling to your comfort



**Auto Drain Function**  
For effortless water draining



**Auto-Fill**  
For continuous water feed

# OPTIMUS COMFORT 100

Better Performance With Bearing Motor



100  
litres capacity

5500  
m<sup>3</sup>/hr air delivery

650  
sq.ft area coverage

High Density  
Honeycomb Pads

Length : 705  
Width : 470  
Height : 1235  
(in mm)



**Best in Class Air Delivery**  
Highest air flow in desert cooler segment



**EverLast Pump**  
Works even with hard water



**Large & Easy Clean Ice Chamber**  
For convenience & hygiene



**Humidity Control**  
Adjust cooling to your comfort



**Auto Drain Function**  
For effortless water draining



**Auto-Fill**  
For continuous water feed

# OPTIMUS 65

Better Performance With Bearing Motor



65

litres capacity

5500

m<sup>3</sup>/hr air delivery

650

sq.ft area coverage

High Density Honeycomb Pads

Length : 705  
Width : 470  
Height : 1170  
(in mm)



**Best In Class Air Delivery**  
Highest air flow in desert cooler segment



**EverLast Pump**  
Works even with hard water



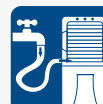
**Large & Easy Clean Ice Chamber**  
For convenience & hygiene



**Humidity Control**  
Adjust cooling to your comfort



**Auto Drain Function**  
For effortless water draining



**Auto-Fill**  
For continuous water feed



# OPTIMUS 100

Better Performance With Bearing Motor



100  
litres capacity

5500  
m<sup>3</sup>/hr air delivery

650  
sq.ft area coverage

High Density Honeycomb Pads

Length : 705  
Width : 470  
Height : 1235  
(in mm)



**Best In Class Air Delivery**  
Highest air flow in desert cooler segment



**EverLast Pump**  
Works even with hard water



**Large & Easy Clean Ice Chamber**  
For convenience & hygiene



**Humidity Control**  
Adjust cooling to your comfort



**Auto Drain Function**  
For effortless water draining



**Auto-Fill**  
For continuous water feed

**NEW**  
**OPTIMUS 125**

Better Performance With  
Bearing Motor



125  
litres capacity

5500  
m<sup>3</sup>/hr air delivery

650  
sq.ft area coverage

High Density  
Honeycomb Pads

Length : 705  
Width : 470  
Height : 1380  
(in mm)



**Best in Class Air Delivery**  
Highest air flow in desert cooler segment



**EverLast Pump**  
Works even with hard water



**Large & Easy Clean Ice Chamber**  
For convenience & hygiene



**Humidity Control**  
Adjust cooling to your comfort



**Auto Drain Function**  
For effortless water draining



**Auto-Fill**  
For continuous water feed



**Crompton**

**OPTIMUS DAC 125**


Cooling nahi,  
*jaldi cooling*



# OZONE DESERT COOLERS

Ozone desert coolers is our most successful series and is known for its reliability in the massive Indian Air Cooler market. This series has high density honeycomb pads to provide prolonged cooling. To enhance customer convenience they are equipped with auto fill and have an ice chamber to provide extra cooling. The series is available in 3 capacities - 55L, 75L & 88L.

## List of Features:

- Everlast Pump - works even with hard water
  - Auto Fill
  - Prolonged Cooling
  - Wider Angle Air Throw
  - 4-Way Air Deflection
  - Auto Swing Vertical Louvers
  - Ice Chamber
  - High Density Honeycomb Pads
  - Motor with Overload Protection
  - Inverter Compatible
  - Low Running Cost
  - 1 Year Warranty
- 

**NEW**  
**OZONE ROYALE 55**

Better Performance With  
Bearing Motor



55

litres capacity

4200

m<sup>3</sup>/hr air delivery

490

sq.ft area coverage

High Density  
Honeycomb Pads

Length : 620  
Width : 410  
Height : 1110  
(in mm)



**EverLast Pump**  
Works even with hard water



**Auto-Fill**  
For continuous water feed



**Humidity Control**  
Adjust cooling to your comfort



**Auto Drain Function**  
For effortless water draining



**4 Way Air Deflection**  
For adjusting air stream direction  
as per your need



**Motor with Overload Protection**  
For safety of motor and pump

**NEW**  
**OZONE ROYALE 75**

Better Performance With Bearing Motor



75  
litres capacity

4200  
m<sup>3</sup>/hr air delivery

490  
sq.ft area coverage

High Density  
Honeycomb Pads

Length : 600  
Width : 410  
Height : 1180  
(in mm)



**EverLast Pump**  
Works even with hard water



**Auto-Fill**  
For continuous water feed



**Humidity Control**  
Adjust cooling to your comfort



**Auto Drain Function**  
For effortless water draining



**4 Way Air Deflection**  
For adjusting air stream direction as per your need



**Motor with Overload Protection**  
For safety of motor and pump

**NEW**  
**OZONE ROYALE 88**

Better Performance With  
Bearing Motor



88

litres capacity

4200

m<sup>3</sup>/hr air delivery

490

sq.ft area coverage

High Density  
Honeycomb Pads

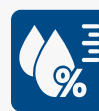
Length : 600  
Width : 410  
Height : 1210  
(in mm)



**EverLast Pump**  
Works even with hard water



**Auto-Fill**  
For continuous water feed



**Humidity Control**  
Adjust cooling to your comfort



**Auto Drain Function**  
For effortless water draining



**4 Way Air Deflection**  
For adjusting air stream direction  
as per your need



**Motor with Overload Protection**  
For safety of motor and pump



# OZONE 55



Better Performance With  
Bearing Motor



55  
litres capacity

4200  
m<sup>3</sup>/hr air delivery

490  
sq.ft area coverage

High Density  
Honeycomb Pads

Length : 620  
Width : 410  
Height : 1110  
(in mm)



**EverLast Pump**  
Works even with hard water



**Auto-Fill**  
For continuous water feed



**Motor with Overload Protection**  
For safety of motor and pump



**4 Way Air Deflection**  
For adjusting air stream direction  
as per your need

# OZONE 75



Better Performance With Bearing Motor



75

litres capacity

4200

m<sup>3</sup>/hr air delivery

490

sq.ft area coverage

High Density  
Honeycomb Pads

Length : 620  
Width : 410  
Height : 1180  
(in mm)



**EverLast Pump**

Works even with hard water



**Auto-Fill**

For continuous water feed



**Motor with Overload Protection**

For safety of motor and pump



**4 Way Air Deflection**

For adjusting air stream direction as per your need

# OZONE 88



Better Performance With  
Bearing Motor



## 88

litres capacity

## 4200

m<sup>3</sup>/hr air delivery

## 490

sq.ft area coverage

High Density  
Honeycomb Pads

Length : 600

Width : 410

Height : 1210  
(in mm)



#### EverLast Pump

Works even with hard water



#### Auto-Fill

For continuous water feed



#### Motor with Overload Protection

For safety of motor and pump



#### 4 Way Air Deflection

For adjusting air stream direction  
as per your need

**NEW**  
**OZONE CLASSIC H 55**



55

litres capacity

3800

m<sup>3</sup>/hr air delivery

410

sq.ft area coverage

Honeycomb Pads

Length : 620

Width : 410

Height : 1110  
(in mm)



**EverLast Pump**

Works even with hard water



**Auto-Fill**

For continuous water feed



**Motor with Overload Protection**

For safety of motor and pump



**4 Way Air Deflection**

For adjusting air stream direction  
as per your need



Crompton

OZONE Royale 88

WATER INLET

MAX

MED

MIN

Cooling nahi,  
*jaldi cooling*

## COOL BREEZE DESERT COOLERS

To meet the rising expectations of the Indian Market, the Cool Breeze series is crafted for cooling comfort with modern aesthetics. These coolers have honeycomb pads and 4-way air deflection. The Everlast Pump is less prone to jamming even with high TSD level of water. To enhance customer convenience this series has easy removable side panels and has an ice chamber to provide extra cooling convenience. In this series there are 3 capacities available viz. 40L, 53L & 80L. The 40L model is a mini desert with 12" Fan that has compact size for small & medium areas. The 53L & 80L are regular desert models for large areas.

List of Features:

- Everlast Pump - works even with hard water
- Prolonged Cooling
- 4-Way Air Deflection
- Auto Swing Vertical Louvers
- Ice Chamber
- Honeycomb Pads
- Motor with Overload Protection
- Inverter Compatible
- 1 Year Warranty

Crompton

COOL BREEZE DAC 53

Control panel with three rotary dials and several icons. The icons include a fan, a water drop, a gear, and a pump. Text labels include "Auto Swing Louvers" and "Evilast Pump".



# COOL BREEZE DAC 53

Better Performance With Bearing Motor



53  
litres capacity

5000  
m<sup>3</sup>/hr air delivery

590  
sq.ft area coverage

Honeycomb Pads

Length : 685  
Width : 500  
Height : 1145  
(in mm)



**EverLast Pump**  
Works even with hard water



**Auto-Fill**  
For continuous water feed



**Motor with Overload Protection**  
For safety of motor and pump



**4 Way Air Deflection**  
For adjusting air stream direction as per your need



**Easy Clean Ice Chamber**  
For convenience & hygiene



# COOL BREEZE DAC 80

Better Performance With  
Bearing Motor



## 80

litres capacity

## 5000

m<sup>3</sup>/hr air delivery

## 590

sq.ft area coverage

Honeycomb  
Pads

Length : 685  
Width : 500  
Height : 1235  
(in mm)



#### EverLast Pump

Works even with hard water



#### Auto-Fill

For continuous water feed



#### Motor with Overload Protection

For safety of motor and pump



#### 4 Way Air Deflection

For adjusting air stream direction  
as per your need



#### Easy Clean Ice Chamber

For convenience & hygiene

Cooling nahi,  
*jaldi cooling*

## GALE DESERT COOLERS

Gale desert coolers are applicable for commercial and extra-large areas. These coolers have honeycomb pads and 4-way air deflection. The Everlast Pump is less prone to jamming even with high TSD level of water. They are provided with castor wheel for easy maneuverability. The series is available in 60L & 90L capacity.

List of Features:

- Everlast Pump - works even with hard water
- Prolonged Cooling
- 4-Way Air Deflection
- Auto Swing Vertical Louvers
- Fully Collapsible Louvers
- Ice Chamber
- Honeycomb Pads
- Motor with Overload Protection
- Inverter Compatible
- 1 Year Warranty



100% Air Delivery  
Motor with Overheat Protection  
Auto Shut-Off Lowers  
Evaporative Pump

Crompton

GALE DAC 90

HIGH

# GALE DAC 60



60

litres capacity

4000

m<sup>3</sup>/hr air delivery

470

sq.ft area coverage

Honeycomb  
Pads

Length : 620

Width : 420

Height : 1115  
(in mm)



**EverLast Pump**

Works even with hard water



**Auto-Fill**

For continuous water feed



**Motor with Overload Protection**

For safety of motor and pump



**4 Way Air Deflection**

For adjusting air stream direction  
as per your need



**Easy Clean  
Ice Chamber**

For convenience & hygiene

# GALE DAC 90



## 90

litres capacity

## 4000

m<sup>3</sup>/hr air delivery

## 470

sq.ft area coverage

Honeycomb  
Pads

Length : 620

Width : 420

Height : 1200  
(in mm)



### EverLast Pump

Works even with hard water



### Auto-Fill

For continuous water feed



### Motor with Overload Protection

For safety of motor and pump



### 4 Way Air Deflection

For adjusting air stream direction  
as per your need



### Easy Clean Ice Chamber

For convenience & hygiene

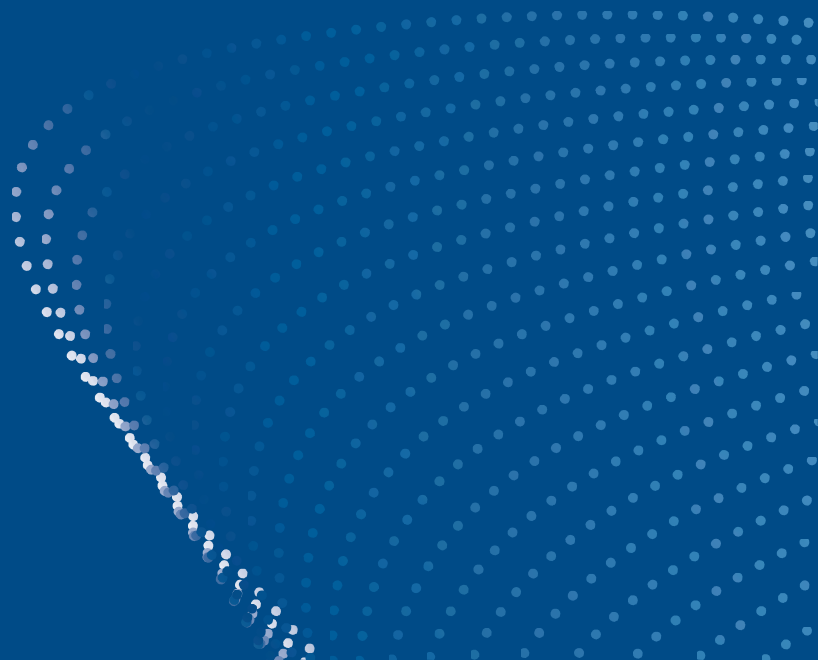
Cooling nahi,  
*jaldi cooling*

## ZELUS DESERT COOLERS

Zelus coolers are our fresh range of mini desert coolers crafted with cooling comfort for Indian market addressing needs of small and medium rooms. These are provided with 12" fans and honeycomb pads to deliver prolonged cooling. The Everlast Pump is less prone to jamming even with high TDS level of water. The series is available with 28L & 43L capacities.

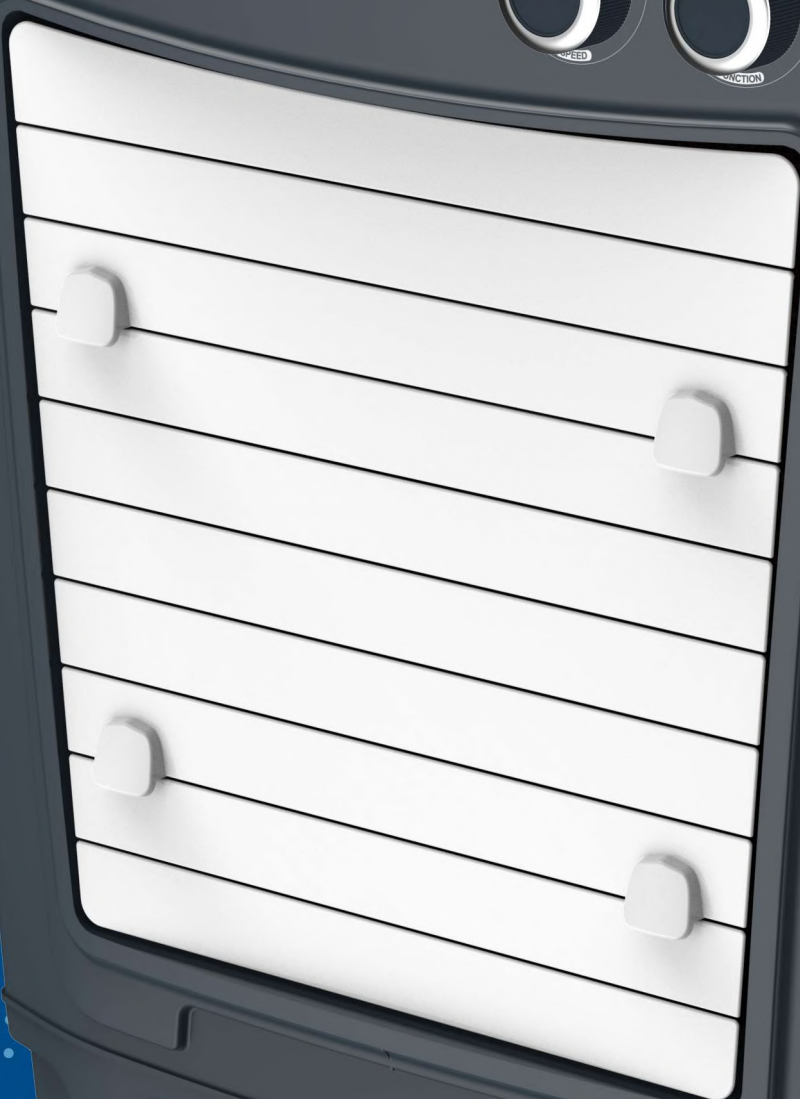
List of Features:

- Everlast Pump - works even with hard water
- Prolonged Cooling
- 4-Way Air Deflection
- Auto Swing Vertical Louvers
- Fully Collapsible Louvers
- Ice Chamber
- Honeycomb Pads
- Motor with Overload Protection
- Inverter Compatible
- 1 Year Warranty



**Crompton**

Zelus DAC 28



# ZELUS DAC 28

Better Performance With Bearing Motor



28

litres capacity

2350

m<sup>3</sup>/hr air delivery

280

sq.ft area coverage

High Density  
Honeycomb Pads

Length : 520  
Width : 350  
Height : 865  
(in mm)



**EverLast Pump**  
Works even with hard water



**4 Way Air Deflection**  
For adjusting air stream direction  
as per your need



**Motor with Overload Protection**  
For safety of motor and pump



**Auto Swing Louvers**  
With motorised vertical  
louver movement

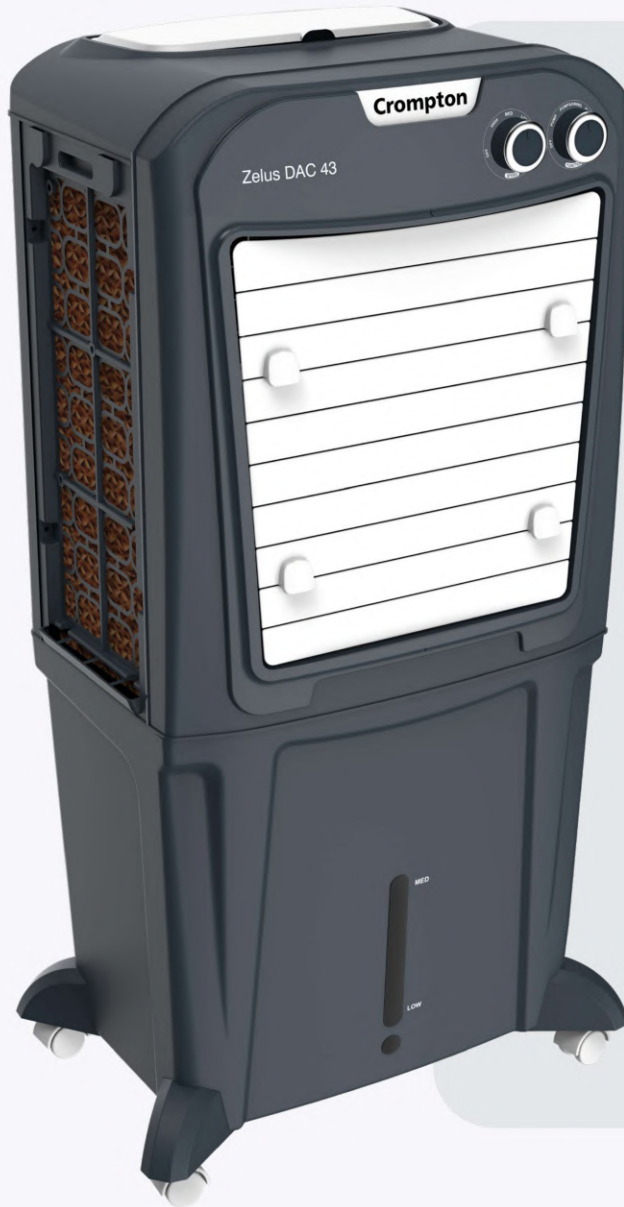


**Easy Clean  
Ice Chamber**  
For convenience & hygiene



# ZELUS DAC 43

Better Performance With Bearing Motor



43  
litres capacity

2350  
m<sup>3</sup>/hr air delivery

280  
sq.ft area coverage

High Density  
Honeycomb Pads

Length : 520  
Width : 350  
Height : 990  
(in mm)



**EverLast Pump**  
Works even with hard water



**4 Way Air Deflection**  
For adjusting air stream direction as per your need



**Motor with Overload Protection**  
For safety of motor and pump



**Auto Swing Louvers**  
With motorised vertical louver movement



**Easy Clean Ice Chamber**  
For convenience & hygiene

**NEW**

# ZELUS ROYALE DAC 43

Better Performance With Bearing Motor



43

litres capacity

2250

m<sup>3</sup>/hr air delivery

260

sq.ft area coverage

High Density  
Honeycomb Pads

Length : 520  
Width : 350  
Height : 995  
(in mm)



**EverLast Pump**

Works even with hard water



**4 Way Air Deflection**

For adjusting air stream direction as per your need



**Auto-Fill**

For continuous water feed



**Auto Swing Louvers**

With motorised vertical louver movement



**Motor with Overload Protection**

For safety of motor and pump



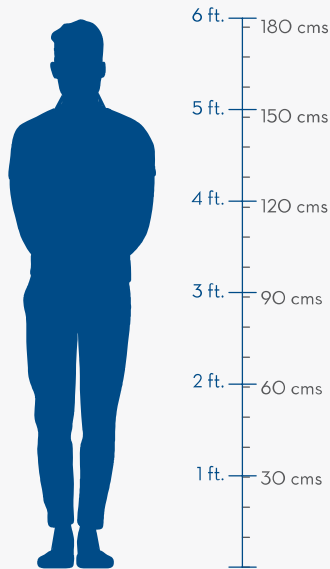
**Crompton**

ZELUS Royale DAC43



# SCALE COMPARISON CHART

## Desert Coolers



Height - 117 cms



Height - 117 cms



Parameters	Optimus 65iOT	Optimus 65i
Suitable Room Size (sq.ft)	650	650
Blower / Fan	Fan	Fan
Wattage (W)	200	200
Tank Capacity (L)	65	65
Air Delivery (m <sup>3</sup> / hr)	5500	5500
IOT / Digital / Manual Operation	IOT	Digital
Remote Control	Yes	Yes
Pureshield	Yes	NA
Ice Chamber	Yes	Yes
Easy Access Distribution Tray	Yes	Yes
Everlast Pump	Yes	Yes
Humidity Control	Yes	Yes
Auto Drain	Yes	Yes
Auto Fill	Yes	Yes
Mosquito Nets	Yes	Yes
Fully Collapsible Louvers	Yes	Yes
Cooling Media	High Density Honeycomb Pads	High Density Honeycomb Pads
Product Dimensions	L - 705 W - 470 H - 1170 (in mm)	L - 705 W - 470 H - 1170 (in mm)

Images of the products are for illustrative purposes only and may vary from the actual product.

Product is tested under lab conditions, product specifications are subject to change without prior notice

Height - 117 cms



Height - 123.5 cms



Height - 117 cms



Optimus Comfort 65	Optimus Comfort 100	Optimus 65
650	650	650
Fan	Fan	Fan
200	200	200
65	100	65
5500	5500	5500
Manual	Manual	Manual
NA	NA	NA
NA	NA	NA
Yes	Yes	Yes
Yes	Yes	Yes
Yes	Yes	Yes
NA	NA	Yes
Yes	Yes	Yes
Yes	Yes	Yes
Yes	Yes	Yes
Yes	Yes	Yes
Yes	Yes	Yes
High Density Honeycomb Pads	High Density Honeycomb Pads	High Density Honeycomb Pads
L - 705 W - 470 H - 1170 (in mm)	L - 705 W - 470 H - 1235 (in mm)	L - 705 W - 470 H - 1170 (in mm)

Images of the products are for illustrative purposes only and may vary from the actual product.  
Product is tested under lab conditions, product specifications are subject to change without prior notice



Parameters	Optimus 100	Optimus 125	Ozone Royale 55
Suitable Room Size (sq.ft)	650	650	490
Blower / Fan	Fan	Fan	Fan
Wattage (W)	200	200	195
Tank Capacity (L)	100	125	55
Air Delivery (m <sup>3</sup> / hr)	5500	5500	4200
IOT / Digital / Manual Operation	Manual	Manual	Manual
Remote Control	NA	NA	NA
Pureshield	NA	NA	NA
Ice Chamber	Yes	Yes	Yes
Easy Access Distribution Tray	Yes	Yes	NA
Everlast Pump	Yes	Yes	Yes
Humidity Control	Yes	Yes	Yes
Auto Drain	Yes	Yes	Yes
Auto Fill	Yes	Yes	Yes
Mosquito Nets	Yes	Yes	NA
Fully Collapsible Louvers	Yes	Yes	NA
Cooling Media	High Density Honeycomb Pads	High Density Honeycomb Pads	High Density Honeycomb Pads
Product Dimensions	L - 705 W - 470 H - 1235 (in mm)	L - 705 W - 470 H - 1380 (in mm)	L - 620 W - 410 H - 1110 (in mm)

Images of the products are for illustrative purposes only and may vary from the actual product.  
 Product is tested under lab conditions, product specifications are subject to change without prior notice

Height - 118 cms

Height - 121 cms

Height - 111 cms

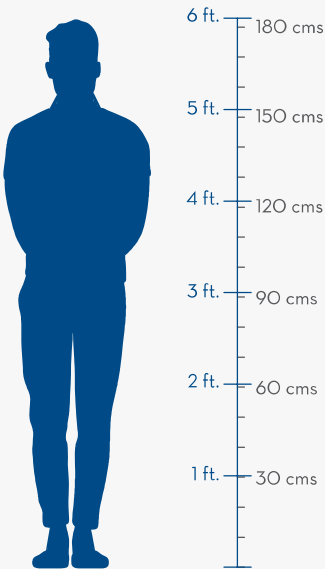
Height - 118 cms

Height - 121 cms



Ozone Royale 75	Ozone Royale 88	Ozone 55	Ozone 75	Ozone 88
490	490	490	490	490
Fan	Fan	Fan	Fan	Fan
195	195	190	190	190
75	88	55	75	55
4200	4200	4200	4200	4200
Manual	Manual	Manual	Manual	Manual
NA	NA	NA	NA	NA
NA	NA	NA	NA	NA
Yes	Yes	Yes	Yes	Yes
NA	NA	NA	NA	NA
Yes	Yes	Yes	Yes	Yes
Yes	Yes	NA	NA	NA
Yes	Yes	NA	NA	NA
Yes	Yes	Yes	Yes	Yes
NA	NA	NA	NA	NA
NA	NA	NA	NA	NA
High Density Honeycomb Pads	High Density Honeycomb Pads	High-Density Honeycomb Pads	High Density Honeycomb Pads	High Density Honeycomb Pads
L - 620 W - 410 H - 1180 (in mm)	L - 600 W - 410 H - 1210 (in mm)	L - 620 W - 410 H - 1110 (in mm)	L - 620 W - 410 H - 1180 (in mm)	L - 620 W - 410 H - 1210 (in mm)

Images of the products are for illustrative purposes only and may vary from the actual product.  
Product is tested under lab conditions, product specifications are subject to change without prior notice



Height - 111 cms



Height - 114.5 cms



Height - 123.5 cms



Parameters	Ozone Classic H55	Cool Breeze DAC 53	Cool Breeze DAC 80
Suitable Room Size (sq.ft)	490	588	588
Blower / Fan	Fan	Fan	Fan
Wattage (W)	150	200	200
Tank Capacity (L)	55	53	80
Air Delivery (m <sup>3</sup> / hr)	3800	5000	5000
OT / Digital / Manual Operation	Manual	Manual	Manual
Remote Control	NA	No	No
Pureshield	NA	No	No
Ice Chamber	Yes	Yes	Yes
Easy Access Distribution Tray	NA	No	No
Everlast Pump	Yes	Yes	Yes
Humidity Control	NA	No	No
Auto Drain	NA	No	No
Auto Fill	Yes	No	No
Mosquito Nets	NA	No	No
Fully Collapsible Louvers	NA	No	No
Cooling Media	Honeycomb Pads	Honeycomb Pads	Honeycomb Pads
Product Dimensions	L - 620 W - 410 H - 1110 (in mm)	L - 685 W - 500 H - 1145 (in mm)	L - 685 W - 500 H - 1235 (in mm)

Images of the products are for illustrative purposes only and may vary from the actual product.  
Product is tested under lab conditions, product specifications are subject to change without prior notice



Height - 111.5 cms

Height - 120 cms

Height - 86.5 cms

Height - 96 cms

Height - 99.5 cms



Gale DAC 60	Gale DAC 90	Zelus DAC 28	Zelus DAC 43	Zelus Royale DAC 43
470	470	277	277	260
Fan	Fan	Fan	Fan	Fan
150	150	105	105	105
60	90	28	43	43
4000	4000	2350	2350	2250
Manual	Manual	Manual	Manual	Manual
No	No	No	No	No
No	No	No	No	No
Yes	Yes	Yes	Yes	Yes
No	No	No	No	No
Yes	Yes	Yes	Yes	Yes
No	No	No	No	No
No	No	No	No	No
No	No	No	No	Yes
No	No	No	No	No
Yes	Yes	Yes	Yes	Yes
Honeycomb Pads	Honeycomb Pads	High Density Honeycomb Pads	High Density Honeycomb Pads	High Density Honeycomb Pads
L - 620 W - 420 H - 1115 (in mm)	L - 620 W - 420 H - 1200 (in mm)	L - 520 W - 350 H - 865 (in mm)	L - 520 W - 350 H - 960 (in mm)	L - 520 W - 350 H - 995 (in mm)

Images of the products are for illustrative purposes only and may vary from the actual product.  
Product is tested under lab conditions, product specifications are subject to change without prior notice

Cooling nahi,  
*jaldi cooling*

## GINIE NEO PERSONAL COOLERS

Ginie Neo is our smallest cooler with 10L capacity suitable for table top usage. These coolers have high density honeycomb pads to provides prolonged cooling. The mosquito & dust nets prevent entry and breeding of mosquitoes and dust to the coolers.

List of Features:

- Mosquito Nets
- Prolonged Cooling
- 4-Way Air Deflection
- Auto Swing Vertical Louvers
- Ice Chamber
- High Density Honeycomb Pads
- Motor with Overload Protection
- Inverter Compatible
- 1 Year Warranty



# GINIE NEO



## 10

litres capacity

## 650

m<sup>3</sup>/hr air delivery

## 80

sq.ft area coverage

High Density  
Honeycomb Pads

Length : 285  
Width : 265  
Height : 515  
(in mm)



#### Mosquito Nets

Ensures health & hygiene



#### Motor with Overload Protection

For safety of motor and pump



#### 4 Way Air Deflection

For adjusting air stream direction  
as per your need



#### Auto Swing Louvers

With motorised vertical  
louver movement

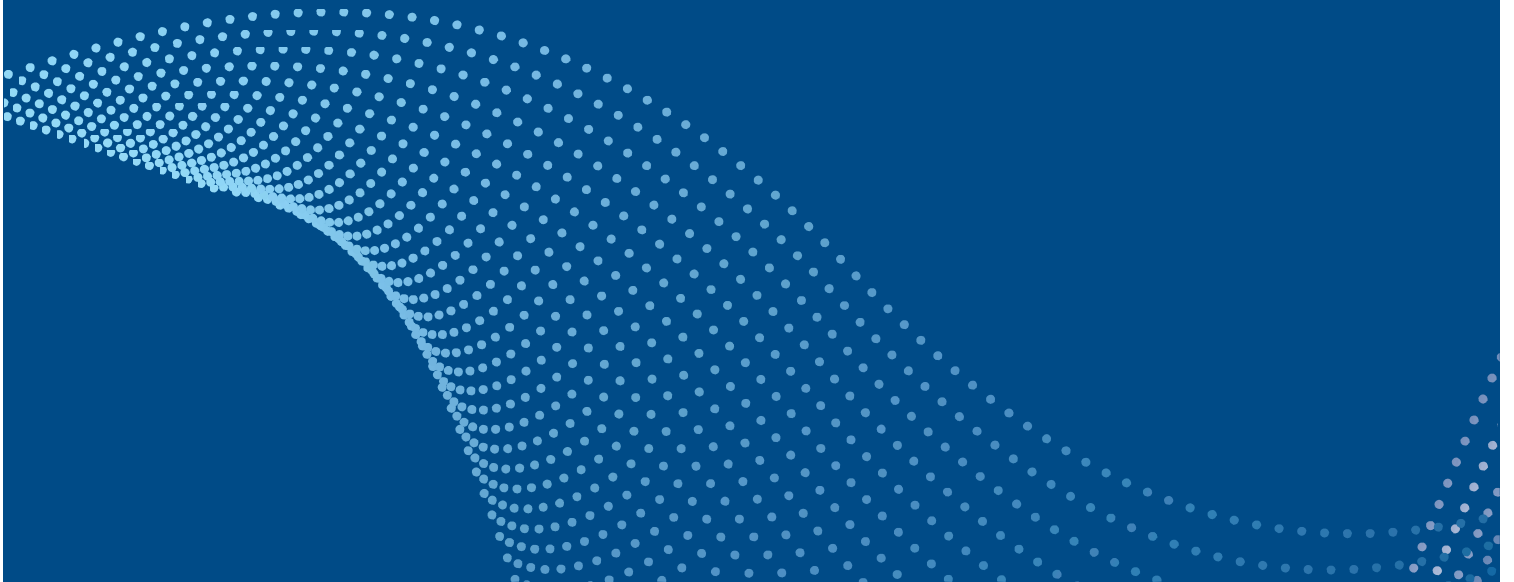
Cooling nahi,  
*jaldi cooling*

## JEDI PERSONAL COOLERS

Jedi coolers is the latest range of contemporary design to match the cooling and design expectations. These personal coolers are provided with honeycomb pads to provide prolonged cooling. The Everlast Pump is less prone to jamming even with high TDS level of water. The series is available in 16L, 22L & 38L capacity.

List of Features:

- Everlast Pump - works even with hard water
- Prolonged Cooling
- 4-Way Air Deflection
- Auto Swing Vertical Louvers
- Ice Chamber
- Honeycomb Pads
- Motor with Overload Protection
- Inverter Compatible
- 1 Year Warranty





**Crompton**

Jedi PAC 16

# JEDI PAC 16

Better Performance With Bearing Motor



16  
litres capacity

1200  
m<sup>3</sup>/hr air delivery

150  
sq.ft area coverage

Honeycomb Pads

Length : 400  
Width : 290  
Height : 655  
(in mm)



**EverLast Pump**

Works even with hard water



**Motor with Overload Protection**

For safety of motor and pump



**4 Way Air Deflection**

For adjusting air stream direction as per your need



**Auto Swing Louvers**

With motorised vertical louver movement

# JEDI PAC 22

Better Performance With  
Bearing Motor



22  
litres capacity

1200  
m<sup>3</sup>/hr air delivery

150  
sq.ft area coverage

Honeycomb  
Pads

Length : 400  
Width : 290  
Height : 765  
(in mm)



**EverLast Pump**  
Works even with hard water



**Motor with Overload Protection**  
For safety of motor and pump



**4 Way Air Deflection**  
For adjusting air stream direction  
as per your need



**Auto Swing Louvers**  
With motorised vertical  
louvers movement

# JEDI PAC 35

Better Performance With  
Bearing Motor



35

litres capacity

1200

m<sup>3</sup>/hr air delivery

150

sq.ft area coverage

High Density  
Honeycomb Pads

Length : 400  
Width : 290  
Height : 852  
(in mm)



**EverLast Pump**

Works even with hard water



**Motor with Overload Protection**

For safety of motor and pump



**4 Way Air Deflection**

For adjusting air stream direction  
as per your need



**Auto Swing Louvers**

With motorised vertical  
louver movement





**Crompton**

Jedi PAC 35

Cooling nahi,  
*jaldi cooling*





# MARVEL NEO PERSONAL COOLER

Marvel Neo coolers are compact designs for proximity usage in small and medium rooms. These coolers have high density honeycomb pads to provide prolonged cooling. The mosquito nets and fully collapsible louvers prevent entry and breeding of mosquitoes. The Everlast Pump is less prone to jamming even with high TSD level of water. The series is available with 23L & 40L capacities.

List of Features:

- Everlast Pump - works even with hard water
- Mosquito Nets
- Prolonged Cooling
- 4-Way Air Deflection
- Auto Swing Vertical Louvers
- Fully Collapsible Louvers
- High Density Honeycomb Pads
- Motor with Overload Protection
- Inverter Compatible
- 1 Year Warranty

# MARVEL NEO 23

Better Performance With Bearing Motor



23

litres capacity

1300

m<sup>3</sup>/hr air delivery

150

sq.ft area coverage

High Density  
Honeycomb Pads

Length : 490  
Width : 380  
Height : 775  
(in mm)



**EverLast Pump**

Works even with hard water



**Motor with Overload Protection**

For safety of motor and pump



**Auto Swing Louvers**

With motorised vertical  
louver movement



**4 Way Air Deflection**

For adjusting air stream direction  
as per your need

# MARVEL NEO 40

Better Performance With  
Bearing Motor



40  
litres capacity

1300  
m<sup>3</sup>/hr air delivery

150  
sq.ft area coverage

High Density  
Honeycomb Pads

Length : 490  
Width : 380  
Height : 915  
(in mm)



**EverLast Pump**  
Works even with hard water



**Motor with Overload Protection**  
For safety of motor and pump



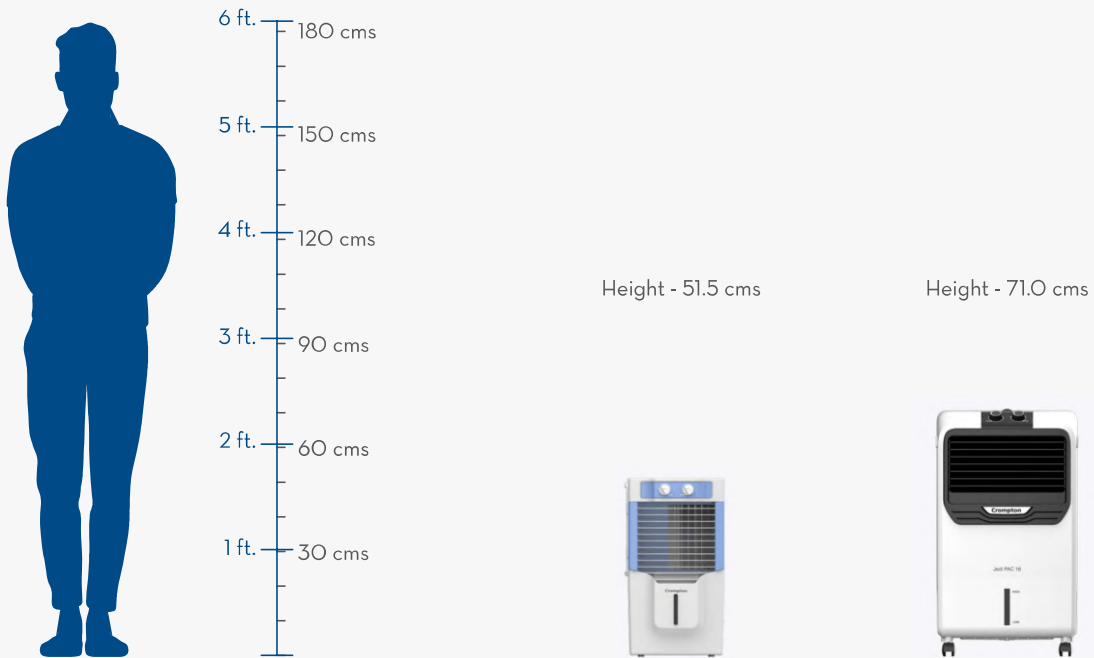
**Auto Swing Louvers**  
With motorised vertical  
louver movement



**4 Way Air Deflection**  
For adjusting air stream direction  
as per your need

# SCALE COMPARISON CHART

## Personal Coolers



Parameters	Ginie Neo	Jedi PAC 16
Suitable Room Size (sq.ft)	80	150
Blower / Fan	Blower	Blower
Wattage (W)	130	130
Tank Capacity (L)	10	16
Air Delivery (m <sup>3</sup> / hr)	650	1200
IOT / Digital / Manual Operation	Manual	Manual
Remote Control	NA	NA
Ice Chamber	Yes	Yes
Easy Access Distribution Tray	NA	NA
Everlast Pump	NA	Yes
Auto Fill	NA	NA
Mosquito Nets	Yes	NA
Fully Collapsible Louvers	NA	NA
Cooling Media	High Density Honeycomb Pads	Honeycomb Pads
Product Dimensions	L - 285 W - 265 H - 515 (in mm)	L - 400 W - 290 H - 655 (in mm)

Images of the products are for illustrative purposes only and may vary from the actual product.  
Product is tested under lab conditions, product specifications are subject to change without prior notice

Height - 79.0 cms



Height - 90.0 cms



Height - 77.5 cms



Height - 91.5 cms



Jedi PAC 22	Jedi PAC 35	Marvel Neo 23	Marvel Neo 40
150	150	150	150
Blower	Blower	Blower	Blower
130	130	165	165
22	35	23	40
1200	1200	1300	1300
Manual	Manual	Manual	Manual
NA	NA	NA	NA
Yes	Yes	NA	NA
NA	NA	NA	No
Yes	Yes	Yes	Yes
NA	NA	NA	NA
NA	NA	Yes	Yes
NA	NA	Yes	Yes
Honeycomb Pads	Honeycomb Pads	High Density Honeycomb Pads	High Density Honeycomb Pads
L - 400 W - 290 H - 725 (in mm)	L - 400 W - 290 H - 852 (in mm)	L - 490 W - 380 H - 775 (in mm)	L - 490 W - 380 H - 915 (in mm)

Images of the products are for illustrative purposes only and may vary from the actual product.  
Product is tested under lab conditions, product specifications are subject to change without prior notice





Cooling nahi,  
*jaldi cooling*

## OPTIMUS NEO TOWER COOLERS

The Optimus Neo series have been developed to provide cooling solutions to small and medium rooms. These coolers have high density honeycomb pads to provides prolonged cooling. The Everlast Pump is less prone to jamming even with high TDS level of water. The mosquito nets and fully collapsible louvers prevent entering and breeding of mosquitoes while the Auto fill allows easy filling of water to the cooler. The series is available in 27L, 35L & 52L capacities. Digital operations with remote control is available in 35L.

List of Features:

- Everlast Pump - works even with hard water
- Mosquito Net
- Easy Access Distribution Tray
- Auto Fill
- Prolonged Cooling
- 4-Way Air Deflection
- Auto Swing Vertical Louvers
- Fully Collapsible Louvers
- Ice Chamber
- High Density Honeycomb Pads
- Motor with Overload Protection
- Inverter Compatible
- 1 Year Warranty

# OPTIMUS NEO 27



27  
litres capacity

1350  
m<sup>3</sup>/hr air delivery

160  
sq.ft area coverage

High Density  
Honeycomb Pads

Length : 340  
Width : 370  
Height : 980  
(in mm)



**EverLast Pump**  
Works even with hard water



**Auto-Fill**  
For continuous water feed



**4 Way Air Deflection**  
For adjusting air stream direction  
as per your need



**Easy Clean  
Ice Chamber**  
For convenience & hygiene

# OPTIMUS NEO 35



35  
litres capacity

1350  
m<sup>3</sup>/hr air delivery

160  
sq.ft area coverage

High Density  
Honeycomb Pads

Length : 425  
Width : 380  
Height : 1085  
(in mm)



**EverLast Pump**  
Works even with hard water



**Auto-Fill**  
For continuous water feed

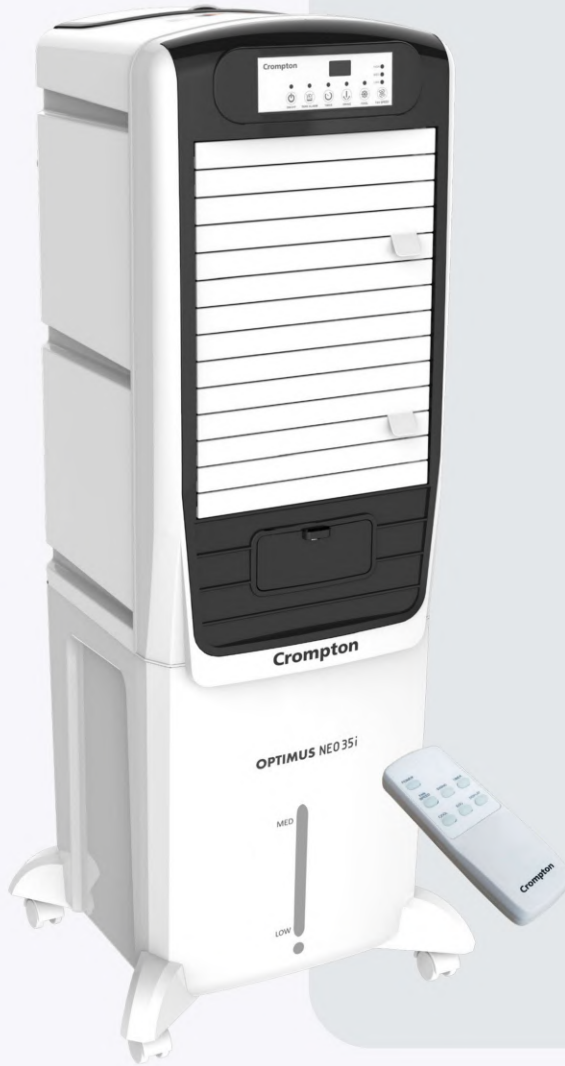


**4 Way Air Deflection**  
For adjusting air stream direction  
as per your need



**Easy Clean  
Ice Chamber**  
For convenience & hygiene

# OPTIMUS NEO 35i



35  
litres capacity

1350  
m<sup>3</sup>/hr air delivery

160  
sq.ft area coverage

High Density  
Honeycomb Pads

Length : 425  
Width : 380  
Height : 1085  
(in mm)



**Digital Operations**  
For convenience and ease of use



**EverLast Pump**  
Works even with hard water



**Auto-Fill**  
For continuous water feed



**4 Way Air Deflection**  
For adjusting air stream direction  
as per your need



**Easy Clean  
Ice Chamber**  
For convenience & hygiene

# OPTIMUS NEO 52



52  
litres capacity

1350  
m<sup>3</sup>/hr air delivery

160  
sq.ft area coverage

High Density  
Honeycomb Pads

Length : 365  
Width : 395  
Height : 1325  
(in mm)



**EverLast Pump**  
Works even with hard water



**Auto-Fill**  
For continuous water feed



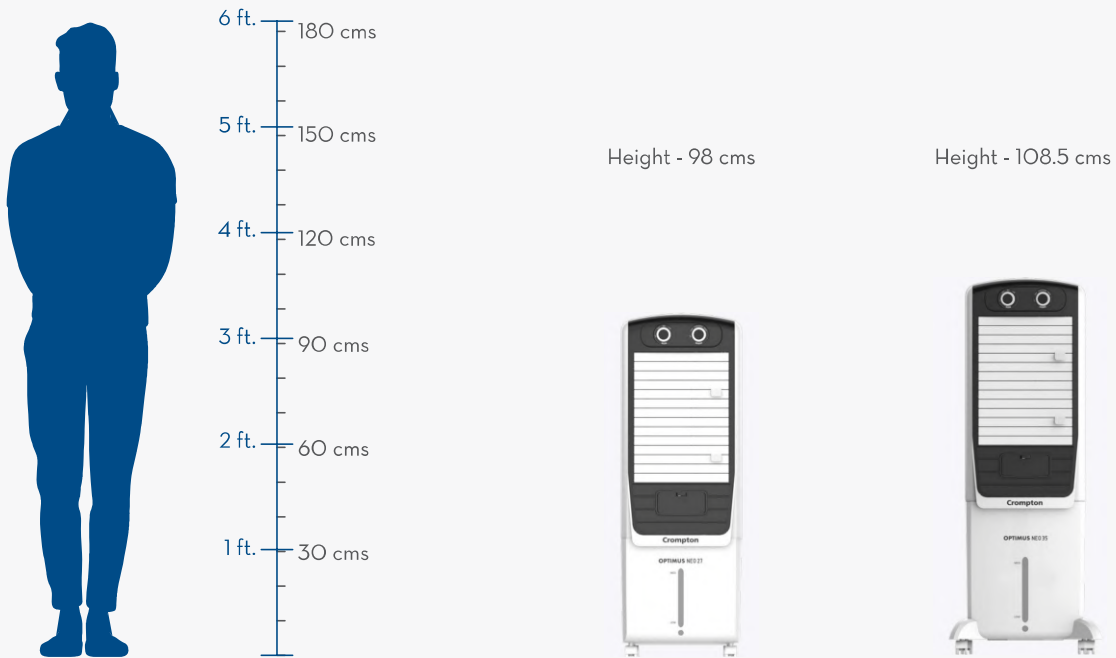
**4 Way Air Deflection**  
For adjusting air stream direction  
as per your need



**Easy Clean  
Ice Chamber**  
For convenience & hygiene

# SCALE COMPARISON CHART

## Tower Coolers



Parameters	Optimus Neo 27	Optimus Neo 35
Suitable Room Size (sq.ft)	160	160
Blower / Fan	Blower	Blower
Wattage (W)	130	130
Tank Capacity (L)	27	35
Air Delivery (m <sup>3</sup> / hr)	1350	1350
IOT / Digital / Manual Operation	Manual	Manual
Remote Control	NA	NA
Ice Chamber	Yes	Yes
Easy Access Distribution Tray	Yes	Yes
Everlast Pump	Yes	Yes
Auto Fill	Yes	Yes
Mosquito Nets	Yes	Yes
Fully Collapsible Louvers	Yes	Yes
Cooling Media	High Density Honeycomb Pads	High Density Honeycomb Pads
Product Dimensions	L - 340 W - 370 H - 980 (in mm)	L - 425 W - 380 H - 1085 (in mm)

Images of the products are for illustrative purposes only and may vary from the actual product.  
Product is tested under lab conditions, product specifications are subject to change without prior notice

Height - 108.5 cms



Height - 132.5 cms



Optimus Neo 35i	Optimus Neo 52
160	160
Blower	Blower
130	130
35	52
1350	1350
Digital	Manual
Yes	NA
Yes	Yes
Yes	Yes
Yes	Yes
Yes	Yes
Yes	Yes
Yes	Yes
High Density Honeycomb Pads	High Density Honeycomb Pads
L - 425 W - 380 H - 1085 (in mm)	L - 365 W - 395 H - 1325 (in mm)

Images of the products are for illustrative purposes only and may vary from the actual product.  
Product is tested under lab conditions, product specifications are subject to change without prior notice

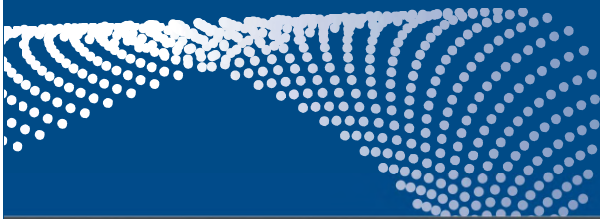
Cooling nahi,  
*jaldi cooling*

## ZELUS WINDOW COOLERS

Zelus window coolers are compact and portable coolers that can be used for indoor or outdoor application. These coolers have 4-way air deflection and woodwool cooling pads. They are ideal for Large and medium rooms. The series is available in 54L capacity.

List of Features:

- 4-Way Air Deflection
- Auto Swing Vertical Louvers
- Woodwool Cooling Pads
- Motor with Overload Protection
- Inverter Compatible
- 1 Year Warranty





# ZELUS WAC 54

Better Performance With Bearing Motor



54  
litres capacity

1700  
m<sup>3</sup>/hr air delivery

200  
sq.ft area coverage

Woodwool  
Cooling Pads

Length : 645  
Width : 570  
Height : 560  
(in mm)



**Motor with Overload Protection**  
For safety of motor and pump



**4 Way Air Deflection**  
For adjusting air stream direction as per your need



**Auto Swing Louvers**  
With motorised vertical louver movement

Cooling nahi,  
*jaldi cooling*

## OPTIMUS WINDOW COOLERS

Optimus Window Coolers are crafted with deep insights into the cooling solution in large and extra large areas extending the benefits of optimus optimus series in performance & design. These coolers are designed with 18" fan that offer highest air delivery to provide Superior & Jaldi Cooling. They have woodwool cooling pads and have wide angle air throw. The Everlast Pump is less prone to jamming even with high TDS level of water. They are portable with sturdy metal trolley. The series is available in 70L capacity.

List of Features:

- Highest Air Delivery - 18" Fan
- Everlast Pump - works even with hard water
- Large & Easy Clean Ice Chamber
- Prolonged Cooling
- Wider Angle Air Throw
- 4-Way Air Deflection
- Auto Swing Vertical Louvers
- Fully Collapsible Louvers
- Woodwool Cooling Pads
- Motor with Overload Protection
- Inverter Compatible
- Metal Trolley
- 1 Year Warranty



# OPTIMUS WAC 70

Better Performance With  
Bearing Motor



70  
litres capacity

5500  
m<sup>3</sup>/hr air delivery

650  
sq.ft area coverage

Woodwool  
Cooling Pads

Length : 685  
Width : 670  
Height : 845  
(in mm)



**EverLast Pump**  
Works even with hard water



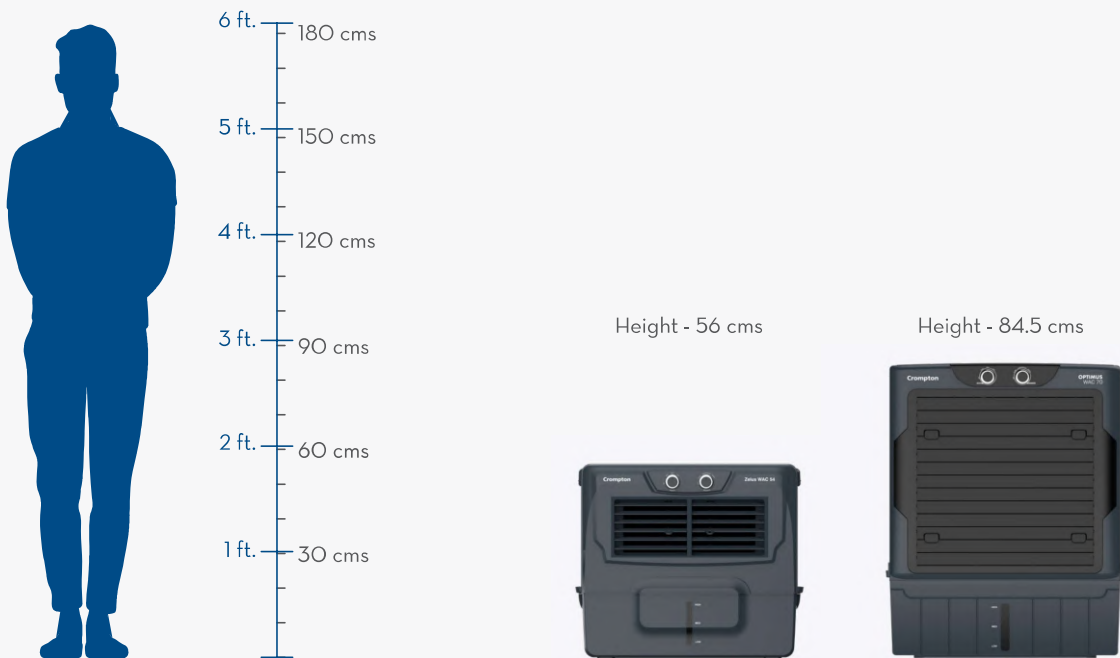
**Motor with Overload Protection**  
For safety of motor and pump



**4 Way Air Deflection**  
For adjusting air stream direction  
as per your need

# SCALE COMPARISON CHART

## Window Coolers



Parameters	Zelus WAC 54	Optimus WAC 70
Suitable Room Size (sq.ft)	200	650
Blower / Fan	Blower	Fan
Wattage (W)	200	200
Tank Capacity (L)	54	70
Air Delivery (m <sup>3</sup> / hr)	1700	5500
IOT / Digital / Manual Operation	Manual	Manual
Remote Control	NA	NA
Ice Chamber	NA	Yes
Metal Trolley	Optional	Yes
Everlast Pump	NA	Yes
Auto Fill	Yes	NA
Mosquito Nets	NA	NA
Fully Collapsible Louvers	NA	Yes
Cooling Media	Woodwool Pads	Woodwool Pads
Product Dimensions	L - 645 W - 570 H - 560 (in mm)	L - 685 W - 670 H - 845 (in mm)

Images of the products are for illustrative purposes only and may vary from the actual product.  
 Product is tested under lab conditions, product specifications are subject to change without prior notice

Crompton



OPTIMUS  
WAC 70



HIGH

MED

LOW

Cooling nahi,  
*jaldi cooling*

## INDIBREEZE COOLERS

Indibreeze Coolers are also called as Industrial coolers, crafted by considering the needs of consumers for extra large rooms like gathering halls, pool side areas and restaurants. Indibreeze is available in 135L with 18.5 inch metal fan blade and 8500 m<sup>3</sup>/hr air delivery that makes for a more promising cooler while 95L is with 17 inch metal fan blade and 6500 m<sup>3</sup>/hr air delivery. Heavy duty caster wheels provides easy manoeuvrability, large surface area of honeycomb pads provide high cooling efficiency and the autofill feature in the tank help to avoid spillage of water on the floor. Fully collapsible louvers in 95L help to avoid mosquito or insects entry. Inverter compatibility of Industrial cooler works well when there is power cut off.

List of Features:

- Highest air delivery with 18.5" metal fan in 135L
- Highest air delivery with 17" metal fan in 95 L
- Everlast pump- works with hard water
- Large honey comb pad for high cooling efficiency
- Auto fill
- Prolonged cooling
- Fully collapsible louvers
- Motor with overload protection
- Inverter compatibility
- 1 Year warranty



Crompton

INDIBREEZE DAC 135

# INDIBREEZE DAC 95

Better Performance With  
Bearing Motor



95

litres capacity

6500

m<sup>3</sup>/hr air delivery

770

sq.ft area coverage

Honeycomb  
Pads

Length : 780  
Width : 500  
Height : 1435  
(in mm)



**EverLast Pump**

Works even with hard water



**Auto-Fill**

For continuous water feed



**Motor with Overload Protection**

For safety of motor and pump



**4 Way Air Deflection**

Four leaf with 17.5 inch metal blade



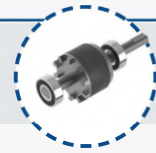
**Heavy Duty**

**Caster Wheels**



# INDIBREEZE DAC 135

Better Performance With Bearing Motor



135  
litres capacity

8500  
m<sup>3</sup>/hr air delivery

1000  
sq.ft area coverage

Honeycomb  
Pads

Length : 865  
Width : 650  
Height : 1480  
(in mm)



**EverLast Pump**  
Works even with hard water



**Auto-Fill**  
For continuous water feed



**Motor with Overload Protection**  
For safety of motor and pump



Four leaf with 18 inch metal blade



Heavy Duty  
Caster Wheels

# SCALE COMPARISON CHART

## Industrial Coolers



Parameters	Indibreeze DAC 95	Indibreeze DAC 135
Suitable Room Size (sq.ft)	770	1000
Blower / Fan	Fan	Fan
Wattage (W)	280	315
Tank Capacity (L)	95	135
Air Delivery (m <sup>3</sup> / hr)	6500	8500
IOT / Digital / Manual Operation	Manual	Manual
Remote Control	NA	NA
Ice Chamber	NA	NA
Easy Access Distribution Tray	NA	NA
Everlast Pump	Yes	Yes
Auto Fill	Yes	Yes
Mosquito Nets	NA	NA
Fully Collapsible Louvers	Yes	NA
Cooling Media	Honeycomb Pads	Honeycomb Pads
Product Dimensions	L - 780 W - 500 H - 1435 (in mm)	L - 865 W - 650 H - 1480 (in mm)

Images of the products are for illustrative purposes only and may vary from the actual product.

Product is tested under lab conditions, product specifications are subject to change without prior notice







**CROMPTON GREAVES  
CONSUMER ELECTRICALS LIMITED**

REGISTERED OFFICE:

Equinox Business Park, 1st Floor, Tower 3,  
LBS Marg, Kurla (W), Mumbai 400 070  
INDIA

[www.crompton.com](http://www.crompton.com)

Customer Service:

Helpline: 1800-419-0505

Whatsapp: 7428713838

Email: [consumer.support@crompton.co.in](mailto:consumer.support@crompton.co.in)