

To explore  
our range of products  
and recipes log on to  
[www.ushacook.com](http://www.ushacook.com)

**USHA**  
COOK

**USHA care** | Toll Free: 1800 1033 111

[usha\\_care@usha.com](mailto:usha_care@usha.com)

## USHA INTERNATIONAL LTD.

Plot No. 15, Institutional Area, Sector 32, Gurugram - 122 001 (Haryana)

Tel : +91-124-4583100, Fax : +91-124-4583200, E-mail: [usha\\_care@usha.com](mailto:usha_care@usha.com) , Website: [www.usha.com](http://www.usha.com)

Regd. Office : Surya Kiran Building, 19 Kasturba Gandhi Marg, New Delhi 110 001, (India) Tel : +91 11 23318114 Fax : +91 11 23318118

ISO 9001 : 2015 Certified Company

**USHA** ® Registered Trademark and Copyright of USHA INTERNATIONAL LTD.  Registered Trademark of USHA INTERNATIONAL LTD.

**USHA**® *iChef*®

## MIXER GRINDER 4 JAR



Instruction Manual



Dear Customer,

*Congratulations!*

You are now a Proud Owner of an USHA iChef Mixer Grinder 4 Jar.

Innovatively designed, using only the highest quality material and components for years of trouble free performance.

Please read these instructions carefully before using.

Best Wishes

## CONTENTS

Introduction to iChef .....	2
Safety instructions .....	4
Know your product .....	6
Operating instructions .....	8
Recommended jars usage capacity .....	11
Standard recipes .....	12
Features of iChef mixer grinder .....	13
Cleaning and maintenance .....	16
Product technical specifications detail .....	17
Troubleshooting .....	18
Warranty card .....	19



HANDS FREE OPERATIONS  
WITH LOCK



HIGH TORQUE 100%  
COPPER MOTOR



4 JARS



FRUIT FILTER

FREE  
HOME  
SERVICE\*



IS - 4250  
CML 960032915



Ignite your culinary genius with iChef: intuitive, intelligent, immersive and indulgent. With its cutting edge technology and deep understanding of Indian kitchens, iChef endeavours to transform simple ingredients into a masterpiece at the touch of a button.

### The iChef Range



Steam Oven



Blender Heater



Smart Air Fryer (5.5 L)



Smart Air Fryer (5 L)



4 Slice Sandwich Grill



Programmable Electric Kettle



Electric Pressure Cooker



Mixer Grinder 4 Jar



Food Processor

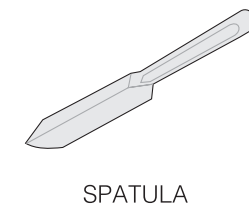
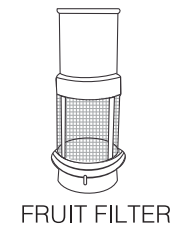
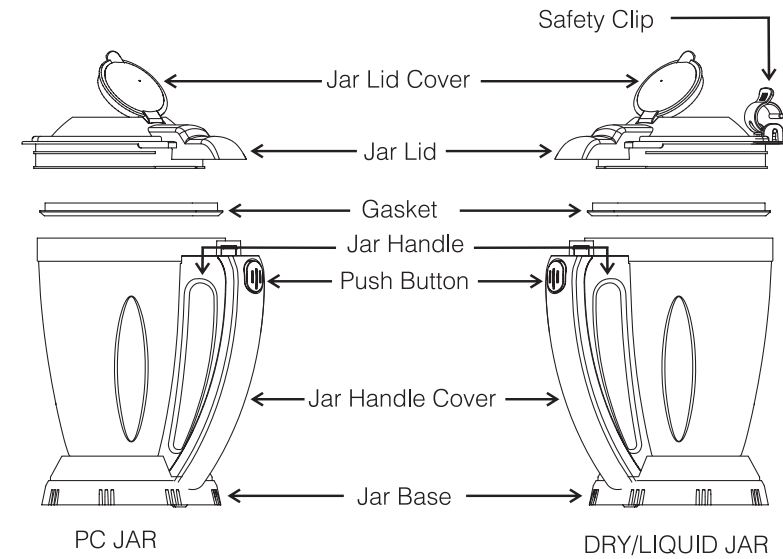
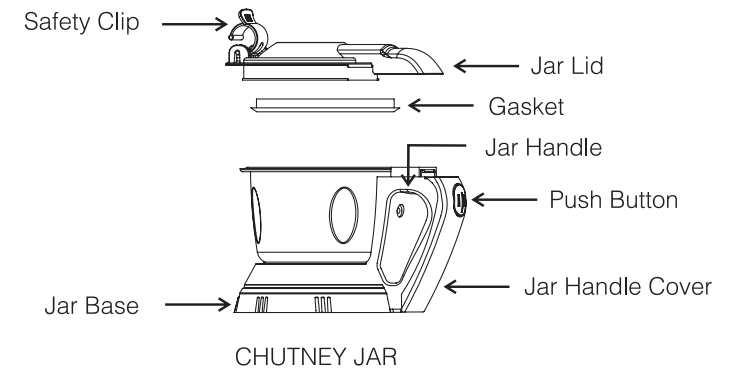
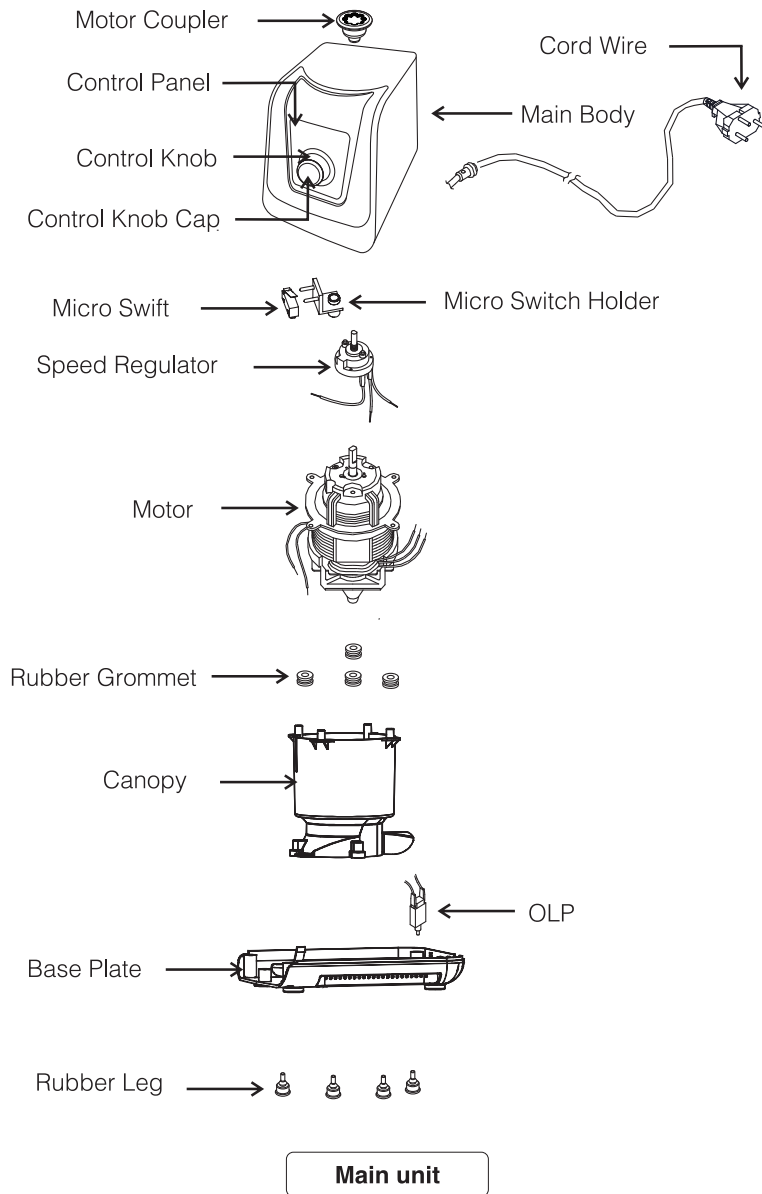
## SAFETY INSTRUCTIONS

Before using the Usha electrical appliance, please read all the instructions carefully and follow basic precautions mentioned below. This product is designed and intended for household use only. Even if you are familiar with the product then also place it handy for ready references.

1. After unpacking the unit and before any use, make sure the mechanical parts of the unit and all its attachments are not damaged.
2. Before connecting the appliance make sure that the mains voltage complies with the voltage specified.
3. Usha appliance has been incorporated with a grounded plug. Please ensure the wall outlet in your house is well earthed.
4. Do not operate any Usha appliance with a damaged cord or plug in any manner. Return appliance to the nearest authorized service facility for repair. Only Usha or its Authorized Service Centre can replace any damaged components.
5. Do not spill water on basic unit. In case it happens please get it checked from the service personnel before operating.
6. Never keep mixer on wet surface, without the anti-slip feet removed or as it may cause an electrical shock. Keep the appliance at a suitable height on a flat surface for easy operation.
7. Do not touch the moving parts and blades during operation as they revolve at high speed and may cause injury. Ensure fingers are kept well away from moving parts.
8. Handle the blade with care to avoid injuries as it is very sharp.
9. Never exceed the maximum level when working with liquids.
10. Do not use appliance on top of a cloth or plastic sheet under basic unit as it may get sucked up and block the ventilation holes in the bottom during operation.
11. Place the appliance/Cord wire away from direct heat and sunlight and hot surfaces like electrical hot plates, hot gas, gas burners, heat oven etc.
12. Do not operate the mixer with an empty jar nor overload conditions.
13. To protect against any electric risk, do not immerse the basic unit in water or any other liquids.
14. Always use the spatula for scraping off the contents from the side wall of jars.
15. Always switch off and unplug the appliance after use, when not in use, before assembling and disassembling parts, cleaning or carrying out any maintenance of the appliance.
16. The appliance cannot be used for blending hard substance; otherwise the blade could be blunted. Do not blend hot liquids.
17. Do not leave the product unattended when it is operational.
18. Never use accessories or parts data not made by Usha as this will void the warranty.
19. Do not run the mixer for more than 30 minutes continuously as it may affect the life of the appliance.
20. The jars are not intended to be used for storage.
21. Keep the mixer grinder at least 0.15 meter away from the wall.
22. When using extension cord with your product make sure that the extension cord is correctly wired and rated for its use.
23. Do not grasp the plug and pull out to disconnect.
24. To clean wipe out the exterior with a soft damp cloth.
25. Do not drop the main unit or jars.
26. Give a break of at least two minutes after continuous Dry Grinding of 3 minutes.
27. Fill the blender Jar only up to  $\frac{1}{4}$ th of its capacity and add required amount of water or milk so that the blades don't get jammed.
28. Fill the Jar only  $\frac{3}{4}$ th of its capacity to avoid spilling of liquid, when you start the machine.
29. Do not use the Mixer Grinder for ice crushing or grinding raw Meat.
30. Before running the machine ensure that the mesh assembly, jars and lids are firmly placed and locked.
31. Clean the mesh with a soft nylon brush. Do not use any metallic object or knife etc.
32. While dry grinding the jar may get heated up due to friction. Don't worry it has nothing to do with the motor.
33. Varnish smell goes after few days.
34. This appliance is not intended for use by persons (including children) with reduced physical, sensory or mental capabilities, or lack of experience or knowledge, unless they have been given supervision or instructions concerning the use by a person responsible for their safety.

**PRODUCT IS FOR HOUSEHOLD USE ONLY**

## KNOW YOUR PRODUCT

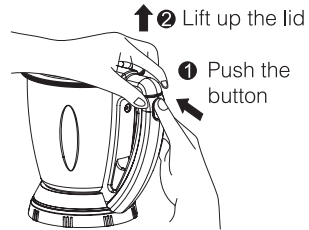


## OPERATING INSTRUCTIONS

### How to Assemble/ Disassemble

#### Lid

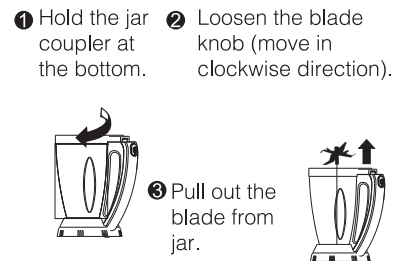
##### Disassemble



- In case the lid is forced to open without pushing the button, the handle may break.

#### Blade

##### Disassemble



- To assemble, revers the dissemble instruction.

### How to Operate the Mixer Grinder:

Before first use wash the parts of the appliance which comes into contact with the food material. Wash multiple times with warm and soapy water, especially the jars by pouring the warm soapy water into the jar followed by closing the lid and running the main unit at first speed.

### Locking and Unlocking of Jars:

1. Before fixing the jar ensure that its coupler rotates freely.
2. Check that the blade assembly of the Jar rotates freely.
3. Locate the jar on the motor unit conveniently. Place the Jar over the Coupler on the Basic Unit.
4. Turn the jar in clockwise direction to lock with Motor Unit.
5. Switch ON and complete the grinding operation.
6. To start with, rotate control knob to no. 1 and then for higher Speed move on to speed No. 2 & 3. (for additional froth for Lassi, Cold Coffee use the Pulse/Incher).
7. To remove the Jar, switch off the machine & turn the Jar gently in an anticlockwise direction & lift up.

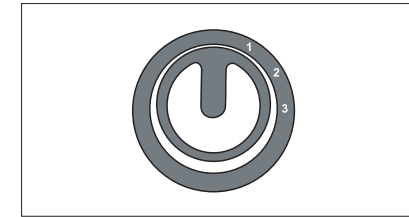
### Note:

The Mixer Grinder will not operate unless the jar and lid are fitted in their respective positions.

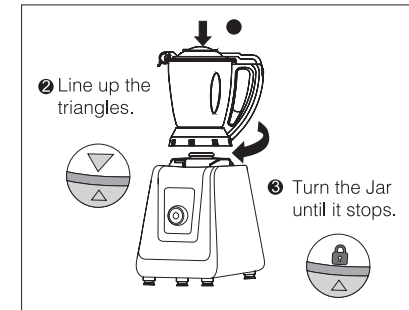
1. Put ingredients.

Put the ingredients in the jar.

Make sure that control knob is in OFF position.



2. Put the lid on the jar first, lock the jar & lid with safety clip then set it on the motor housing.

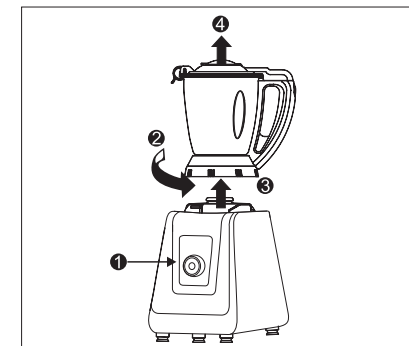


3. Plug in and rotate the control knob. Start with the lowest speed and gradually increase the speed.

When adding extra ingredients, turn off the switch. Remove the lid from the jar and repeat step 1-3

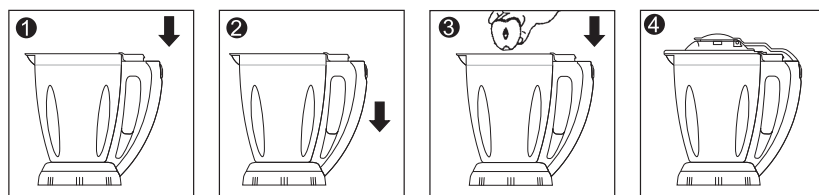


4. Rotate the control knob to the OFF position after grinding and remove the Jar. Then take out the contents from the jar.



### Special instructions for using fruit filter:

1. Place the fruit filter inside the blender jar such that its four slots fits into the four ribs inside the blending jar slightly so that it settles down.
2. Press it down so that it is fixed properly.
3. Fruits should be cut into small pieces before putting inside the fruit filter for extracting the juice.
4. Close the jar lid.
5. Place the Jar assembly onto the coupler of the mixer grinder and rotate clockwise to lock it into position.
6. Initially use low speed and then speed can be increased. The juice is sieved out through the filter and the pulp/seeds get accumulated inside the filter.
7. After juice extraction is done, pour the contents into a glass container.



### NOTE:

1. The Blender jar will not operate unless the jar is fitted in its place and locked with motor unit.
2. The stainless steel blades are very sharp, take extreme care while handling.

### Caution:

Do not use fruits such as bananas & peaches that produce a thick paste that can clog the filter mesh.

## RECOMMENDED JARS USAGE CAPACITY

Jar Type Capacity	Function	Recommended for	Recommended Quantity	Recommended Speed
PC Jar (1.5L)	Blending & Liquidizing	Fruit juices, soups, (Juicing of seeded fruits with or without extractor.)	Min: Upto blade level Max: 2/3 of the Jar	Pulse, 1 & 2
Liquid Jar (1.5L)	Liquidizing/ Grinding/ Blending	Milk Shakes, Lassi, Juices, Butter Milk, Purees, Juices	Min: Upto blade level Max: 2/3 of the Jar	3
Dry Jar (1.5L)	Dry Grinding/ Wet Grinding	Turmeric, Rayee Seeds, Coriander Seeds, Sugar, Nuts, Roasted Coffee Beans, Pulses, Masala, Rice, Soaked Rice (1/3)	Min: Upto blade level Max: 1/2 of the Jar	3
Chutney Jar (500 ml)	Dry Grinding	Sugar, Coffee Beans, Spices, Nuts	Min: Upto blade level Max: 1/2 of the Jar	2, 3
	Wet Grinding	Ginger Garlic Paste, Masala Paste, Chutney, Poppy Seed Paste, Mint Coriander Chutney	Min: Upto blade level Max: 1/2 of the Jar	2, 3

## STANDARD RECIPES

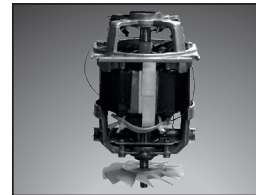
Sr.	Recipe	Quantity	Time
1	Urad Daal	For 1.5L & above jar capacities: 200g + 450 ml water soaked for 12 hours. As and when needed 90 ml water can also be added.	3 minutes
2	Parboiled Rice	For 1.5L & above jar capacities: 200g + 225 ml water soaked for 12 hours. As and when needed 45 ml water can be added.	3 minutes
3	Lassi	For 1.5L & lesser jar capacities: 300g curd + salt / sugar (as per taste).	1 minute
4	Banana Shake	For 1.5 L & lesser jar capacities: 3 Pcs banana + 50 g Ice-cream (optional) + 500ml milk (sugar as per taste).	3 minutes
5	Tomato Puree	For 1.5L & lesser jar capacities: 250g medium sized tomatoes cut in 4 pieces.	2 minutes
6	Wet Masala	For 300 ml, 400 ml & 500 ml: 100g onion + 60g tomato.	2 minutes
7	Ginger Garlic paste	For 300 ml, 400 ml & 500 ml: 80g ginger + 80g garlic.	2 minutes
8	Turmeric	For 1.25L & above jar capacities: 300g of assorted spices roasted and cooled. For 1 L & lesser jar capacities: 250g of assorted spices roasted and cooled.	3 minutes

## FEATURES OF iCHEF MIXER GRINDER



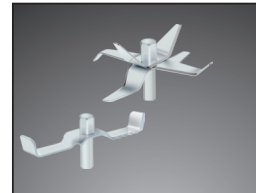
### I- LOCK System

The I- LOCK system is a convenient hands free safety mechanism which will not let the mixer grinder to operate until the lid and the jar are properly locked. This is a premium safety feature which is internationally acclaimed in Mixer Grinders. Since I-LOCK system is hands free, the user is not required to stand and hold the lid in place and can multi-task while the Usha Mixer grinder is working simultaneously.



### 750W Copper Motor

This mixer grinder is fitted with state of the art heavy duty 750W copper motor. It is built with an unique noise reduction technology.



### High Quality Blades

Precisely designed food grade stainless steel blades grinds hard ingredients easily and efficiently.



### Variable 3 Speed Control

Unique i Chef Mixer Grinder comes with variable three step speed technology catering to widest range of grinding, blending and mixing.



### Heavy Duty Stainless Steel (SS) Jars with Flow Break

03 Nos SS jars are precisely designed with ergonomic shape and deep flow breakers which enabling faster & fine grinding performance.





### 3D Cooling Technology

Its advanced design 3D cooling technology enables hot air from the motor to escape faster thereby cooling the motor system simultaneously without breaking its tough performance.



### Motor Guard Technology

World class safety mechanism protects motor during tough grinding operations.



### European Design High Impact Acrylonitrile Butadiene Styrene (ABS) Body

iChef Mixer grinder body made with high grade ABS plastic material which makes it sturdy, shockproof and heat resistant.



### Break Resistant Polycarbonate Jar with Fruit Filter

The iChef Mixer Grinder 4 Jar comes with break resistant polycarbonate jars with a transparent and sturdy fruit filter jar that can be used for juice extraction and various other purposes.

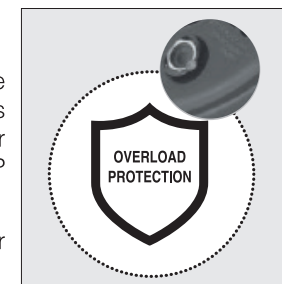


### Vacuum Feet

Suction feature of the Anti-slip feet prevents displacement during operation.

### Auto overload protection:

1. The Mixer is provided with resetting type Over Load Protector (“OLP”) that protects the motor from burning when the jar is over loaded or the liquid is too viscous, the OLP trips and the motor stop automatically.
2. In such an event/occurrence, the power supply is switched off.
3. When this happens, remove the jar from unit and reduce the quantity of material being grounded or add some water.
4. To restart, press the OLP button located at the bottom on the mixer base after 2-3 minutes.
5. Wait for a while to allow the motor to cool down and then start your mixer grinder again.



### Note:

The Usha Mixer Grinder is fitted with a heavy duty motor to withstand extensive usage. Therefore, the chances of motor failure are extremely rare.

## CLEANING AND MAINTENANCE

Make sure the Mixer Grinder is at "OFF" position and the plug is disconnected from outlet before putting on or taking off any part during cleaning/maintenance. The appliance shall be stored in a proper manner at a dry place.

### Cleaning of Jars:

1. After use unlock the Jar, pour out the contents into a clean utensil.
2. Half fill the Jar with little warm water and a teaspoon of liquid soap, close the lid and run it on the main unit at 1st position for about 30 seconds. This dislodges the food particles lodged inside the jar. Pour out the soap solution, wash the jar under running tap water.
3. Use a soft brush to clean the rubber gasket and blade assembly.
4. Wipe and dry with a clean cloth.

### Cleaning the main unit:

5. Never immerse motor unit in water for cleaning. Wipe and clean the outer surface with a dry or slightly damp cloth.
6. Do not use abrasive cleaners or scouring pads on appliance as this may damage the appliance and will impact its appearance.
7. Dry all parts.
8. Reassemble all parts in proper order and store the appliance in a dry place.

## PRODUCT TECHNICAL SPECIFICATIONS DETAIL

Model no.	iChef Mixer Grinder 4 Jar
Voltage / Frequency	230V AC / 50 Hz
Power	750 W
Insulation	Class F
Protection	Class 1Rating
Motor Universal (rpm)	18000 rpm - 21000 rpm @ No Load
Rating	30 Minutes (5 minutes ON, 2 minutes OFF)
Body Material	ABS
Speed Controls	3 Speed and Incher
Controls Type	Knob
Flex Cord	PVC insulated, 3 Pin, 3 Core, Earthing
Over Load Protector	Resetting type
Blending Jar	1.5 Litre Poly Carbonate Jar
Liquidizing Jar	1.5 Litre Stainless Steel Jar
Dry/Wet Jar	1.5 Litre Stainless Steel Jar
Chutney Jar	500 ml Stainless Steel Jar
Lid Material	Poly Carbonate with Safety Lid Lock
No. of Blades	3 Nos. (Stainless Steel)
Accessories	1 No. Spatula

### Note:

In view of the USHA policy of continuous improvement. Specification may change without notice.

## TROUBLESHOOTING

Problem	Possible cause/reason	How to fix
Unit does not start	No power supply	Ensure power supply
	Wire cord loose	Plug in properly
	Jar not set properly	Lock the jar properly with the unit
	Lid set properly	Push lid down completely
Mixer grinder stops suddenly during usage	Overload due to excess grinding material	Reduce the amount of grinding material and press overload button to reset
Vibration	Uneven platform	Place unit on a flat surface
Mixer-grinder generates abnormal noise	Blade assembly is loose	Tighten dome nut of the blade assembly
	Coupler is loose	Tighten the coupler
	Jar is not locked properly	Lock the jar properly
Leakage from jar base	Sintered bush / spindle worn out	Contact USHA Care at toll-free no. 1800 1033 111.
Leakage from jar top	Lid gasket is not set properly	Set the Lid Gasket properly
	Excess water	Reduce the volume of water
The result / performance is not satisfactory	Size of the ingredient is not proper	Cut/ break down the ingredients in to appropriate size
	Wrong jar/ Blades used	Ensure that you are using the jar/blades for its right intended purpose
Burning smell from the unit	Motor may be burnt	Contact customer service

## WARRANTY CARD

This appliance has a warranty for 2 years on product and 5 years on motor against all manufacturing defects from the date of sale. In the event of any complaint, please contact USHA Care at toll-free no. 1800 1033 111.

### The warranty is valid only when:

1. The appliance has been installed, used and maintained in accordance with the instruction manual.
2. The warranty card and cash memo duly signed by the Authorized Dealer are presented with the complaint.
3. The appliance has not been opened or tampered with, by any unauthorized person.

### This warranty does not apply for:

1. Damages due to chipping, peeling, plating and denting.
2. Breakage or damage to components made out of Bakelite, Urea, ABS, SAN and such plastic materials, rubber parts and cord.
3. Normal wear and tear of parts.
4. Damage resulting from accidents, mishandling or negligence on part of the customer. Liability for consequential loss or damage is neither accepted nor implied.

S. No: \_\_\_\_\_ DATE: \_\_\_\_\_

CASH MEMO: \_\_\_\_\_

OWNER'S NAME & ADDRESS: \_\_\_\_\_

DEALER'S NAME AND ADDRESS: \_\_\_\_\_

Dealer Stamp

