

Pre-instruction Literature

On Receipt

It is our policy to promote safe delivery of all orders. This product shipment has been thoroughly checked, packed and quality certified before leaving our factory.

Visible Loss or Damage

If any of the goods called for on the bill of lading or express receipt are damaged or the quantity is short, do not accept them until the freight or express delivery agent makes an appropriate notation on your freight bill or receipt.

Concealed Loss or Damage

When a shipment has been delivered to you in apparent good condition, but upon opening the packaging if any loss or damage has taken place while in transit, inform the carrier's agent / A. O. Smith representative immediately.

About this manual

This manual is a guide to good practice for operating and periodic maintenance of the A. O. Smith ProPlanet P8 RO Water purifier.

This does not contain the full servicing procedures necessary for continued successful operation of this product. The services of A. O. Smith Company Authorised Service Provider must be employed periodically on the same.

Do not operate before reading manual supplied with this product.

Please follow instructions in this manual to ensure personal safety and proper operation of this product. A. O. Smith assumes no liability for installation or servicing performed by any unauthorised personnel. Always install, operate, inspect and maintain this product in accordance with all applicable standards. Please store this user manual carefully for any future reference.

Disposal of this Product

(Waste Electrical and Electronic Equipment)



This marking on the product, accessories or User Manual indicates that the product and its electronic accessories (e.g. Remote, batteries and other replaceable electronic accessories) should not be disposed of with other household waste at the end of their working life. To prevent possible harm to the environment or human health from uncontrolled waste disposal, please separate these items from other types of waste and recycle them responsibly to promote the sustainable re-use of material resources.

Household users should contact their local government office, for details of where and how they can take these items for environmentally safe recycling. This product and its electronic accessories should not be mixed with other commercial wastes for disposal.

1

General Instructions

Safety

Your safety and the safety of your loved ones is paramount to us. There are several safety related messages in this manual, which have been provided during various steps such as the installation, operation and maintenance of your ProPlanet P8 RO Water purifier. These messages point out potential hazards and also educate on how to reduce any potential risks. Please always read and follow all safety messages as provided in this user manual.

| | |
|--|---|
| | This is the safety alert symbol. This symbol alerts you to potential hazards that can hurt you and others. All safety messages will follow the safety alert symbol and either the word "DANGER" or "WARNING". |
| | Indicates an imminently hazardous situation which, if not avoided, will result in death or serious injury. |
| | Indicates a potentially hazardous situation, which if not avoided, could result in death or serious injury. |
| | Indicates a potentially hazardous situation which, if not avoided, may result in minor or moderate injury or property damage. |

IMPORTANT

These instructions have been written as a guide for the proper installation and operation of your Water purifier. A. O. Smith will not accept any liability where these instructions have not been followed. However, for your safety and to avoid damage caused by improper installation, it is recommended that Water purifier must be installed by A. O. Smith Company Authorised Service Provider.

Before proceeding with the installation instructions:

1. Inspect the Water purifier and its component parts for possible damage. Do Not install or attempt to repair any damaged component parts. If you detect any damage in the Water purifier, please contact the dealer where the Water purifier was purchased or call A. O. Smith Customer Care Centre.
2. Verify that the voltage being supplied corresponds to that which is mentioned in the A. O. Smith ProPlanet P8 RO Water purifier manual.

2

Key Features of your A. O. Smith ProPlanet P8 RO Water purifier



Baby Safe Water with 8-Stage Purification



Save water with India's 1st 5 star rated water purifier



No Compromise with 100% RO + SCMT (Silver Charged Membrane Technology)



Purified Hot Water at the press of a Button



CFM + Alkaline technology retains essential minerals and benefits of copper (Copper Fortified Mineralizer)



Peace of mind with 1 year comprehensive warranty.



IAPMO-I WSPC-01:2019 standard covers Point of use (POU) products - AO Smith Green RO products ProPlanet P8 qualified for the highest water efficiency rating of 5 stars showing performance $\geq 50\%$ recovery throughout the tested volume of 6000 litres, that tests minimum quality compliance, contaminant reduction and water efficiency rating (for Reverse Osmosis technology).

*For details visit www.aosmithindia.com

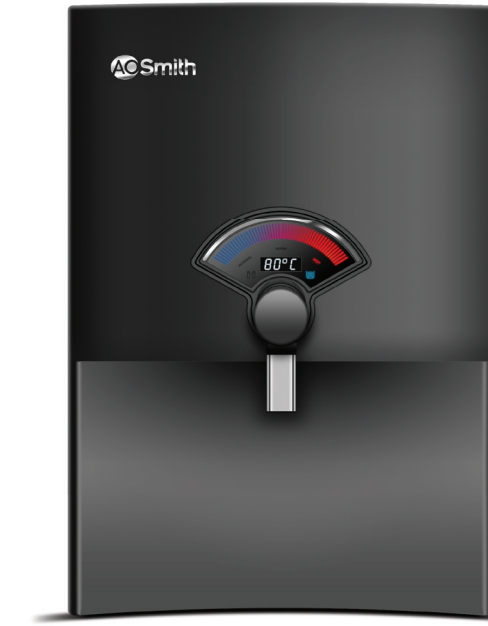


Product colour and image may vary from the actual product.
Part No. : 335300-093_A Date: 25-01-2024



Water Purifier
ProPlanet P8

proplanet



User Manual

Introduction

A. O. Smith ProPlanet P8 RO Water purifier uses one of the latest technologies that is used in water purification process. A. O. Smith ProPlanet P8 RO Water purifier works under the principle of RO (Reverse Osmosis) technology which is found to be one of the most effective process. In this process water under pressure is passed through a semi-permeable membrane. Purified water is collected for drinking in a storage tank and impurities in the water are flushed to the drain.

Why water purification is important?

Water purification, today is essential due to the presence of harmful contaminants present in the water supply. Rapid urbanisation and speedy industrial growth have led to significant pollutants and contaminants being found in the water supply. Below is a list of some of the harmful contaminants found today in the water supply which if consumed in excess can be detrimental to human health.

- TDS (Total Dissolved Solids) like Nitrates, Chlorides, Sulphates etc.
- Pesticides and VOC (Volatile Organic Compounds).
- Heavy metals like Mercury, Arsenic, Lead, Chromium, Cadmium etc., imbalanced pH.
- Micro-organisms such as pathogenic bacteria, virus, protozoa and cysts.

A. O. Smith ProPlanet P8 RO Water purifier removes excessive TDS (Total Dissolved Solids) in water by more than 95%. A. O. Smith ProPlanet P8 RO Water purifier reduces heavy metals, removes pathogens and balances the pH value. By this, it ensures you safe and great tasting water.

How does the A. O. Smith ProPlanet P8 RO Water purifier work?

A. O. Smith ProPlanet P8 RO Water purifier has 8 stages of purification system, wherein the water is passed through the various stages and progressively filtered to get purified water which is stored in the in-built storage tank.

Stage 1 and Stage 2 - Pre-filter + ART™ MAX (Advance Recovery Technology™)

The Pre-filter is used to remove physical contaminants such as dirt, dust, soil particles, turbidity present in the water and ART™ MAX (Advance Recovery Technology™) is scale control media which conditions the water to reduce scaling potential in water. This improves the life of the Sediment filter.

Stage 3 - Sediment filter

This Sediment filter removes fine and coarse physical contaminants present in the water. This improves the life of the Carbon block.

Stage 4 - CB (Carbon block) filter

Then water is passed through CB (Carbon block) filter, which reduces harmful chemicals like pesticides, volatile organic compounds, residual chlorine etc. It also adsorbs bad taste and odour causing organic compounds from water.

Stage 5 - RO (Reverse Osmosis) membrane

RO membrane contains semi-permeable membrane wherein the water is passed through the semi-permeable membrane to remove TDS (Total Dissolved Solids) and heavy metals like mercury, arsenic, lead, chromium, cadmium etc. It also removes micro-organisms like bacteria, virus, protozoa and cysts. The preservative used in the RO membrane is food-grade Sodium meta bi-sulphate.

Stage 6 and Stage 7 - CFM + Alkaline filter

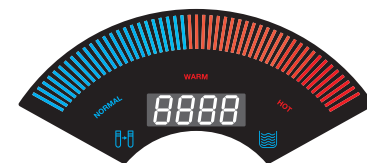
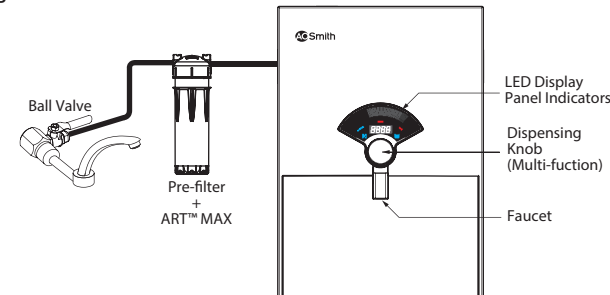
This filter is the combination of copper fortification technology and Alkaline Mineraliser Technology. Copper fortification technology fortify the goodness of copper in water and act as polisher to enhance the taste of water. Alkaline Mineraliser technology ensures water in pH range of 7 to 8.5 and it adds essential minerals (as per input water condition) such as Calcium and Magnesium back to purified water.

Stage 8 - SCMT (Silver Charged Membrane Technology)

In the final stage water is passed through SCMT (Silver Charged Membrane Technology) filter which ensures double purification of water making it Safe and Healthy for drinking.

Product Overview

Figure 1



P8 LED Display Panel Indicators

Note: The Pre-filter + ART™ MAX (Advance Recovery Technology™) and the Ball valve comes along with the product as standard accessories.

3

4

Function of indicators



Filter change indicator

This indicates that the RO membrane, pre and post RO filters need to be replaced.

- Filter change indicator starts blinking indicating that the life of RO membrane, pre and post RO filters membrane is reaching its end time.
- When the life of RO membrane, pre and post RO filters reaches its end, Filter change indicator glows continuously and the unit stops functioning.



Tank full indicator

This indicates that the water purifier tank is full.

Normal water indicator (NORMAL)

This indicator glows when water purifier is dispensing normal water. Refer Operation guide for setting and dispensing normal water in NORMAL mode.

Warm water indicator (WARM)

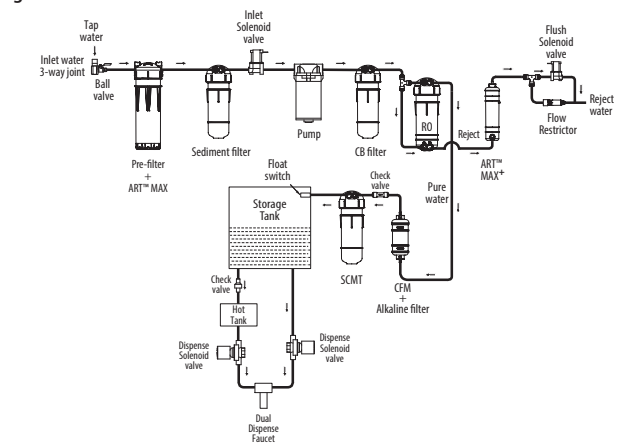
This indicator glows when water purifier is dispensing warm water. Refer Operation guide for setting and dispensing warm water in WARM mode.

Hot water indicator (HOT)

This indicator glows when water purifier is dispensing hot water. Refer Operation guide for setting and dispensing hot water in HOT mode.

Water flow

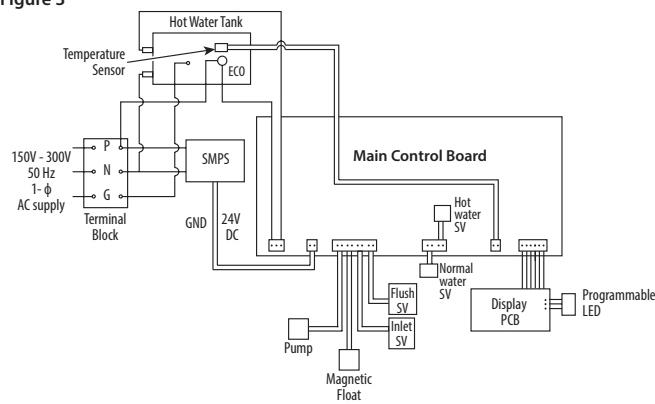
Figure 2



Note: It is recommended not to switch off the Water purifier and/or turn off the water supply to the product when it is not been used for more than 24 hrs. The purifier has an in-built cleaning mechanism which cleans the RO membrane every 24 hrs. by flushing it. This feature protects the RO membrane and ensures longer life.

Electrical Diagram

Figure 3



7

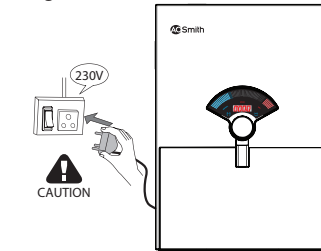
Safety Precautions

Electrical Safety

Even though this product is designed keeping highest safety standards in mind, there are certain Do's and Don'ts which need to be followed while using this product.

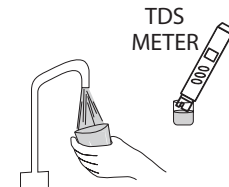
Power plug must be used with a 230 V outlet. It is recommended to connect the product to the power supply only with the plug that is provided with the purifier. Do not pull out or touch power plug with wet hands to avoid electrical shock.

Figure 4



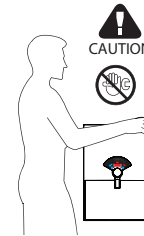
Make sure that the feed water is tested before installation (Refer [Operation guide](#)). Do not install the product if the TDS and Hardness are more than that prescribed in the recommended feed water conditions (Refer [page 13](#)).

Figure 6



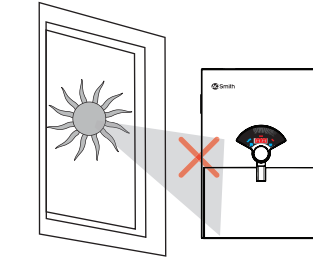
Product should be installed only by A. O. Smith Company Authorised Service Provider. Do not open the purifier for cleaning the filters or for any part replacements. This must be done only by A. O. Smith Company Authorised Service Provider.

Figure 5



Install the product away from direct sunlight.

Figure 7



8

Troubleshooting

Your A. O. Smith P8 RO Water purifier may not function at its desired capability if used incorrectly. This may not necessarily mean that the product is faulty. For instances like these, please follow the steps given below to troubleshoot the problem without the help from a certified technician. If the problem still persists, please call Customer Care Centre immediately.

| Problems | Possible Cause(s) | Solution |
|-----------------------------------|---|--|
| Change in water taste. | Has the purified water been stored in the tank for long time? | Drain the stored water from the storage tank through faucet. |
| | RO membrane / filters may require replacement. | Call Customer Care Centre for RO membrane / filters replacement. |
| | Has the raw water quality changed? | Call Customer Care Centre. |
| Decreased flow of purified water. | Check if there is no water flow through reject line. | Switch OFF the Water purifier and call Customer Care Centre. |
| | Check whether the tap/ ball valve is closed. | Open the tap/ball valve. |
| Less / No reject water. | RO membrane / filters may be clogged or damaged. | Call Customer Care Centre for RO membrane / filters replacement. |
| | Check if the reject water tube is bent. | Clear the bent in the reject water tube. |
| Less/No purified water. | Check if the reject water tube is blocked. | Switch OFF the Water purifier and Call Customer Care Centre. |
| | Check whether there is water supply in the tap. | If not, take the help of a plumber to set it right. |
| | Check whether tap/ball valve is closed. | Open the tap/ball valve. |
| | Check if either RO change or SCPA change is blinking. | Call Customer Care Centre for replacement of filters. |
| | None of the above. | Call Customer Care Centre. |

9

Error Messages and Actions

| Error Code / Error Description | Unit Response | Solution |
|---|---|--|
| E0 (Low pressure error). E0 | Pure water process is stopped. | Check water supply, if problem still persists call Customer Care Centre. |
| E1 (Heating error). E1 | Hot water supply has been stopped. | Switch off/on water purifier. If problem still persists call Customer Care Centre. |
| E2 (High Temperature error). E2 | Hot water supply has been stopped. | Switch off/on water purifier after 5mins. (approx.) of error display. If problem still persists call Customer Care Centre. |
| E3 (Temperature Sensor error). E3 | Hot water supply has been stopped. | Call Customer Care Centre. |
| E4 (Overflow error). E4 | Pure water process is stopped. Normal water can be dispensed and Hot water supply has been stopped. | Call Customer Care Centre. |
| E5 (Filter Change Alarm). E5 | Filter Change icon glows / blinks indicating filter life is about to end. | Call Customer Care Centre for RO membrane/filters replacement. |
| E6 (Battery error). E6 | Pure water process is stopped. Normal water can be dispensed and Hot water supply has been stopped. | Switch OFF the Water purifier and call Customer Care Centre. |
| E7 (Communication/UART Error). E7 | All purification process and functions are stopped. | Call Customer Care Centre. |
| E8 (RTC error). E8 | Pure water process is stopped. Normal and Hot water can be dispensed. | Switch OFF the Water purifier and call Customer Care Centre. |

Note: Call Customer Care No. 1860-500-2468.

11

Technical Specifications

| Model | A. O. Smith P8 RO |
|--|---|
| Product Dimensions (H x D x W) | 482 mm X293 mm X341 mm |
| Net Weight | 9.8 kgs (approx.) |
| Gross Weight | 12.3 kgs (approx.) |
| Production rate* | Upto 15 litres per hour |
| Storage tank capacity | 6.5 litres (approx.) |
| Purification technology | RO (Reverse Osmosis) |
| 8 Stage Purifying Technology | Pre-filter + ART™ MAX (Advance Recovery Technology™) + Sediment filter + CB (Carbon block) filter + Side Stream RO membrane + CFM + Alkaline filter + SCMT (Silver Charged Membrane Technology) |
| Material of construction for plastic parts | Food safe, non-toxic, engineering grade plastics |
| Pump type | Diaphragm pump, 24VDC |
| Input Voltage | 150 – 300 VAC, 50 Hz |
| Power rating (Max) | 48 Watts |
| Pressure Rating*** | 2 psi to 30 psi |
| % Recovery** | Up to 60%* |
| TDS rejection** | ≥95% (approx.) |
| Input water temperature | 5°C to 45°C |

* Production rate depends on variable factors such as feed water pressure, feed water characteristics and condition of the membranes and filters.

** Recovery and TDS rejection percentages also depend on variable factors such as life and condition of the membranes and filters, feed water pressure, feed water characteristics.

*** If input pressure exceeds 30 psi, a pressure reducing valve needs to be installed at the feed line. If the pressure is lower than 7 psi, a booster pump needs to be installed. Ensure you buy them from A. O. Smith Company Authorised Service Provider.

+ Patent Applied.

◆ As tested with input water TDS of 750ppm (NaCl), pH of 7.2 ± 0.2, Water temperature of 27 ± 2° C, Turbidity less than 0.2 NTU, Feed Pressure of 15 psi.

12

Recommended input feed water quality for the optimum performance of your product

| *Recommended Feed Water Quality | |
|---|--|
| Parameter | Limits |
| Total Dissolved Solids (TDS) | Up to 2000 ppm |
| Total hardness | Up to 500 ppm |
| Turbidity | Up to 5 NTU |
| Iron | 0.3 ppm (max.) |
| Feed water pressure | 2 psi to 30 psi / 0.014 Mpa to 0.206 Mpa |
| Feed water temperature | 5° C to 45° C |
| Caution: The RO system is not recommended for arsenic level above 0.1mg/l and fluoride level above 8.0mg/l | |

*The performance of the all filters depends on the input water conditions as mentioned above.

13

| Problems | Possible Cause(s) | Solution |
|---|--|---|
| No hot water. | Check whether the storage tank is full. | Wait until the storage tank gets filled. |
| | Fault in check valve. | Call Customer Care Centre. |
| Water not dispensing when dispense knob is pressed. | Check whether power supply is switched ON. | If power supply is ON and still no water dispense, call Customer Care Centre. |

10

Warranty details/recommended filter change:

As per the warranty, all the filters, including RO membrane needs to be replaced when the Filter change indicator blinks (Refer [page 5](#)).

| Consumable Filters | Average Service Life |
|--|----------------------|
| Pre-filter + ART™ MAX (Advance Recovery Technology™) | 6000 litres* |
| Sediment filter | 6000 litres* |
| CB (Carbon block) filter | 6000 litres* |
| Side Stream RO membrane | 6000 litres* |
| CFM + Alkaline filter | 6000 litres* |
| SCMT (Silver Charged Membrane Technology) | 6000 litres* |

*As per standard test conditions.

14