

Diva Aqua VSS/SXS/BXS/SBS/6008
 Diva Aqua VSS/SXS/BXS/SBS/GXS/
 GBS/MXS/MSS 6010
 Diva Aqua VSS/SXS/BXS/SBS/GBS/
 MXS/MSS 7010
 User Manual

IFB
 Set Yourself Free

TRUSTED BY OVER **7 MILLION** SATISFIED CUSTOMERS



Microwave Oven Built-in-Oven Dishwasher DC & FF Refrigerators Chimney | Built-in-Hob Top Load Front Load 100% Clothes Dryer Air Conditioner

TRI-SHIELD PROTECTION

4 YEAR MACHINE WARRANTY

10 YEAR MOTOR WARRANTY
T&C apply

10 YEAR SPARES SUPPORT
100% PEACE OF MIND

UF421PKMAN537 | I

www.ifb.com | August 2024

Shop 24x7 @ www.ifbappliances.com | Email customerservice@ifbglobal.com | Call 080 458 45678/080 695 45678
www.facebook.com/IFBappliances twitter.com/IFBappliances www.instagram.com/ifbappliances/
www.youtube.com/channel/UCJTIHxPTfez4mrBVBIQLb9Q

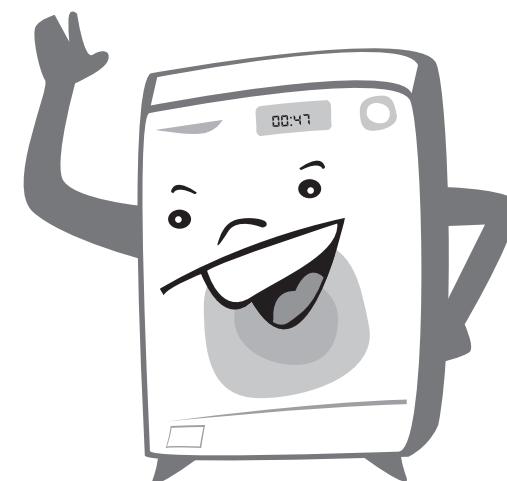


Read instructions before switching on the washing machine. Observe safety guidelines for installation.

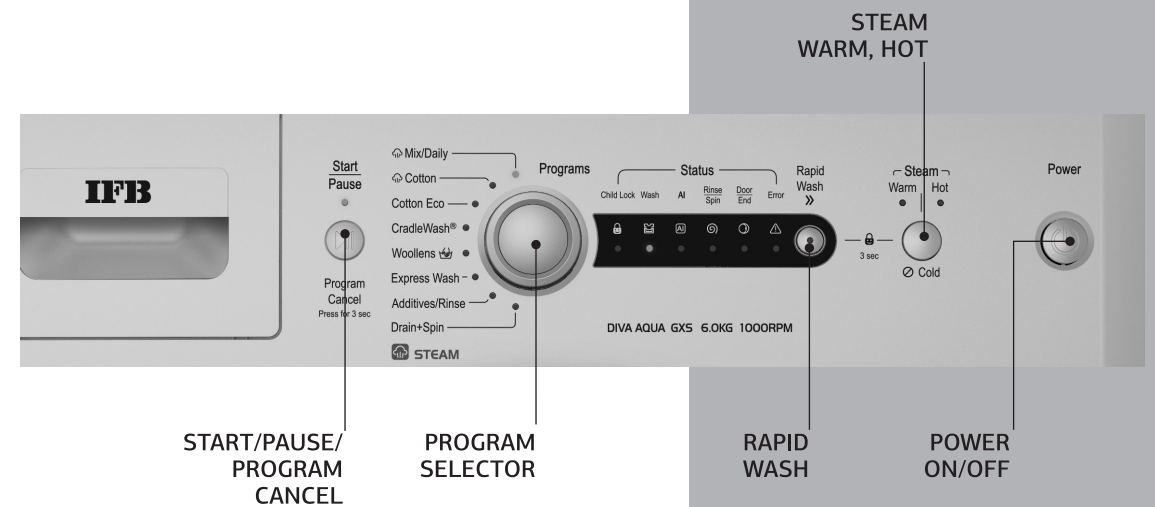
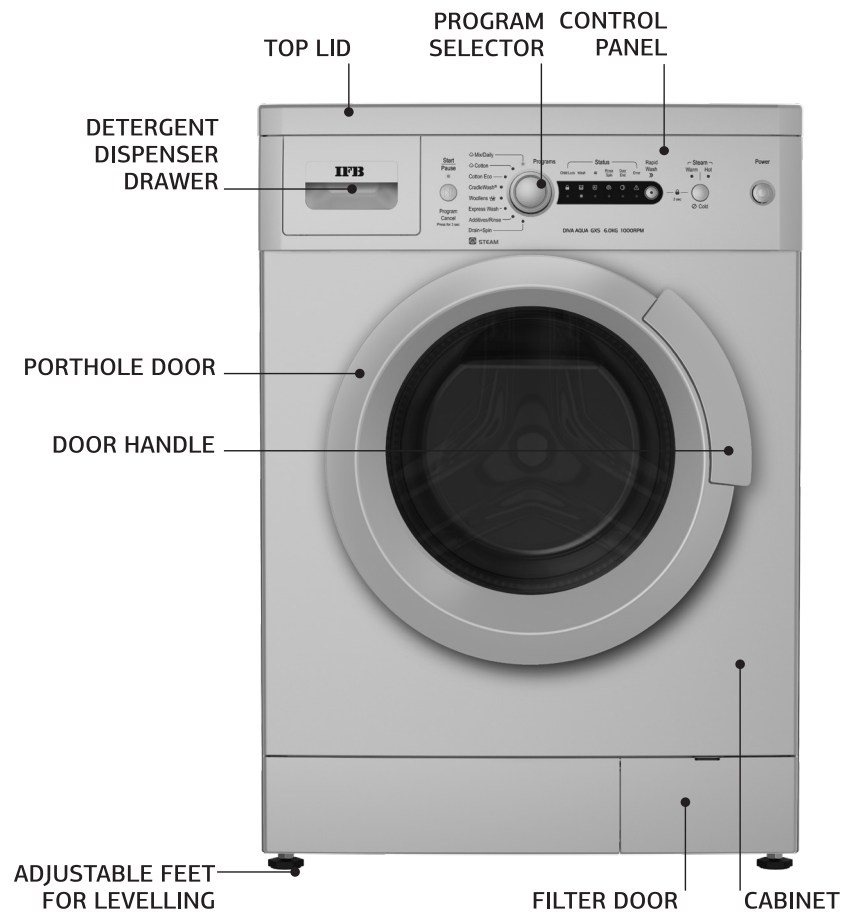


Welcome to the IFB family.

India's best fully automatic washing machine is now at your service.
Here's to your freedom!



The A to Z of your washing machine





Safety guidelines for installation

This appliance is not intended to be used in household and similar applications such as:

- Staff kitchen areas in shops, offices and other working environments.
- Farmhouses.
- In hotels, motels and other residential type environments, by clients.
- Bed and breakfast type environments.
- Areas for communal use in blocks of flats or in launderettes.

If the manufacturer wants to limit the use of the appliance to less than the above, this shall be clearly stated in the instructions.

- Keep the packaging material. It may come in handy when shifting residence.
- Old hoses must not be reused. Always use the new hoses delivered with the machine.
- Before cleaning the machine, ensure you disconnect the main electricity supply and take the plug off the socket.
- Not removing all the packaging and transit bolts before using the appliance may lead to serious damage. Please do not operate the machine until the transit bolts have been removed.
- All washing machine installation work must be carried out only by authorised IFB Care Service Personnel.
- Pre-installation work such as plumbing and electrical connections must be carried out by a qualified fitter, electrician or technician.
- Do not operate the appliance where inflammable substances such as oil, benzene or highly inflammable gas are present. Such materials may cause fire or explosion. Never use combustible detergents.
- Do not install your washing machine in a room where temperatures below freezing may occur. Frozen hoses may burst under pressure. The reliability of the electronic control unit may be impaired at temperatures below freezing point and above 50 °C.
- Install the machine in a room with adequate ventilation. Avoid a room with no windows. The back of the machine should be at least 4 inches (100 mm) away from the wall.
- The machine is provided with ventilating openings on the base. Always put the machine on the floor after removing the carpet.
- Do not install the machine in a damp area or bathroom with exposure to a direct shower.
- Protect the machine from direct sunlight and rainfall.



- Do not place the machine on a slanting, uneven or unstable surface.
- A concrete floor is the most suitable installation surface for a washing machine, being far less prone to vibration during the spin cycle than wooden floorboards.
- The washing machine is not suitable for connection to a hot water supply.
- The machine is designed to operate with water flow pressure between 0.3 Bar–10 Bar. Lower water pressure can lead to malfunction of your machine.



Safety instructions

Read all instructions and explanations for installation carefully before use.
Follow the instructions carefully. Keep the operating instructions handy for later use.

Any damage, which may be caused by cockroaches or other vermin, will not be covered by the appliance warranty.

- Do not install and use a damaged machine. Before connecting the machine, ensure that the connection data on the data plate (fusing, voltage and frequency) match the main electricity supply. If in any doubt, consult IFB Care.
- Do not wash or dry articles that have been cleaned, washed, soaked in or dabbed with combustible or explosive substances (such as oil, paint, gasoline, degreasers, dry cleaning solvents, kerosene etc). This may result in fire or explosion.
- Before using the machine for the first time, check that the transit bolt at the rear of the machine has been removed (refer to section on installation).
- Turn OFF the stopcock if the machine is to be left for any length of time (eg holiday), especially if there is no floor drain (gully) in the immediate vicinity.
- This appliance can be used by children aged 8 years and above and persons with reduced physical, sensory or mental capabilities or lack of experience and knowledge if they are supervised, given instructions concerning the use of the appliance in a safe way and understand the hazards involved.
- Children should not play with the appliance.
- Cleaning and user maintenance should not be performed by children without supervision.



Caution

- The electrical safety of this appliance can only be guaranteed when continuity is complete between the machine and an effective earthing system, which complies with local and national regulations. It is most important that a qualified electrician regularly tests this basic safety requirement. The manufacturer cannot be held responsible for the consequences of an inadequate earthing system.
- For safety reasons do not operate this appliance on an extension cable. Extension leads do not guarantee the required safety of the appliance. There is danger of overheating.
- The machine is built in accordance with current safety requirements. Unauthorised repairs could result in unforeseen dangers for the user, for which the manufacturer cannot accept responsibility. Only authorised IFB Care Service Personnel should undertake repairs.
- The machine is completely isolated from the electricity supply only when it is switched OFF at the wall socket and the plug is taken out, or it is switched OFF from the main source, or the main fuse is taken out or the MCB is switched OFF.
- This machine must only be connected to the onsite water supply using a new hose kit. Old hoses must not be reused. Only genuine IFB original spare parts should replace faulty components. Only when these parts are fitted can the safety standards of the machine be guaranteed.
- If the connection cable is faulty, it must be replaced only by authorised IFB Care Service Personnel to protect the user from danger.
- A washer and dryer should never be stacked without using the proper stacking kit. Doing so is extremely dangerous, as the dryer may vibrate off the washing machine during use.



About eWaste

eWaste or Electronic Waste or Waste Electrical and Electronic Equipment (WEEE) are the terms used to describe old, end-of-life or discarded appliances using electricity.

Do's

- Always dispose of products that have reached end-of-life by calling an authorised local eWaste recycler.
- Always drop off used electronic products, batteries or accessories at your nearest authorised eWaste recycler when they reach end-of-life.
- Whenever possible, or as instructed, sort packaging materials according to responsible waste disposal and recycling options.

Don'ts

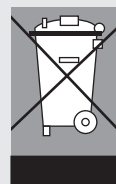
- Do not dismantle electronic products on your own.
- Do not throw electronic products in bins with a 'Do Not Dispose' sign.
- Do not give eWaste to informal and unorganised sectors such as local scrap dealers and rag pickers.
- Do not dispose of your product in garbage bins along with municipal waste that ultimately reaches landfills.

- Do not pull the cord to disconnect the plug. Hold the plug itself. Do not insert or remove the plug with damp hands.
- Do not drag or move the washing machine if it contains the wash load or when in operation.
- Do not spill water over the machine. In case of spillage, wipe dry. Avoid the machine coming in contact with floor cleaning chemicals.
- Do not wash or spray water over the switch or control panel.
- Do not wash shoes or utensils in the machine.
- Use detergent recommended for the washing machine.
- Keep your machine dry to avoid corrosion/rusting. Take special care to wipe the machine after cleaning the coin trap.
- Check the labels on garments for determining the right conditions under which fabrics should be washed.
- The machine is tested with water during assembly for performance checking. Condensed droplets of water may remain inside the drum. It is advisable to run the machine without a wash load in the Cotton maximum temperature program with detergent for the first time after installation.
- Ensure that the machine is connected to a 3 pin socket with good earthing and 16 Amp MCB or other automatic short circuit protection devices.
- Textiles that have been pre-treated in solvent based cleaning agents must be thoroughly rinsed in clean water before being washed in the machine.
- Never use solvent based cleaning agents in this machine, as this may result in damage to component parts and create toxic fumes. Such detergents also pose a threat of fire and explosion.
- If excessive vibrations are observed on the trolley then the trolley needs to be replaced immediately as it can affect reliability of the machine there by reducing the machine life.

Risks of Improper Handling of eWaste

eWaste usually includes components which, if disposed of improperly, hold environmental consequences such as air, water and soil pollution and also pose risks to human health.

By ensuring this product is disposed of correctly, you will help prevent potential negative consequences for the environment and human health. Components and materials used in the manufacture of this washing machine are fully compliant with provisions of hazardous substances outlined in eWaste Management Rules, 2016.



For Detailed Information and Disposal Request

Contact IFB Care at 08045845678/08069545678 and provide your details to our representative to request your product to be picked up for disposal.



- Only use dyes specified by the manufacturer as being suitable for use in a domestic washing machine. Always read the manufacturer's instructions carefully.
- Colour runs and dye removers contain sulphur compounds, which can cause damage such as corrosion. Do not use these products in this machine.
- For machines with a porthole door, remember that the porthole glass will be hot when washing at very high temperatures. Do not let children touch it.
- Always make sure that the drum is stationary before removing clothes. Reaching into a moving drum is extremely dangerous.

Flooding danger

- While hooking the drain hose into a wash basin, check that the water drains OFF quickly to prevent the sink from overflowing. Make sure the drain hose is secure so that the force of the water flowing out of the hose does not dislodge it. Otherwise, this will result in flooding.
- Take care to ensure that foreign objects (eg nails, pins, coins, paper clips etc) do not find their way into the machine with the washing. These may damage components of the machine (eg suds container, drum etc), which in turn can result in damage to the washing.

Contents

| | PAGE |
|---|------|
| • Safety guidelines | 04 |
| • Safety instructions | 06 |
| Chapter 1: Getting started with your machine | |
| • Installing your machine & safety guidelines | 12 |
| • Before you start | 14 |
| Chapter 2: Working your machine | |
| • 4 easy steps to do your laundry | 15 |
| • Finishing | 19 |
| • Wash guide map | 20 |
| • Wash features | 21 |
| Chapter 3: Get more from your machine | |
| • Tips for best results | 23 |
| • Maintenance and cleaning | 24 |
| Chapter 4: Useful information | |
| • Troubleshooting | 27 |
| • Technical specifications | 33 |

Warning Electrical safety of this appliance can only be guaranteed when continuity is complete between it and an effective earthing system which complies with local and national safety regulations. It is important that this basic requirement is present and regularly tested. When there is any doubt the onsite wiring system should be inspected by a qualified electrician. IFB cannot be held liable for consequences of an inadequate earthing system (eg electric shock etc).



Precautions This appliance conforms to safety requirements. Inappropriate use can lead to injury or damage to property. Please read this manual carefully. It contains information on safety, installation, use and maintenance to avoid inconvenience or damage.

Use only low foaming detergents in this machine. It will help use your washing machine optimally and avoid accidents or damage to it.

Getting started with your machine

Installing your machine & safety guidelines

1 Select the right spot

Unpack and place the new washing machine in proximity to both water and electrical connections. Ensure that the floor is properly levelled.

2 Removing the transit bolts

- Use a spanner to remove the transit bolts.
- Insert plastic caps provided.
- Keep the transit bolts carefully as they will be required in case you need to shift the machine again.
- Please do not operate the machine until the transit bolts have been removed.

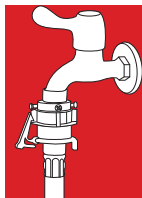
3 Levelling

- Level the machine by using the adjustable screws provided at the bottom for levelling.
- Make sure that the machine rests on all four feet on a level surface.



4 Connection to the water supply

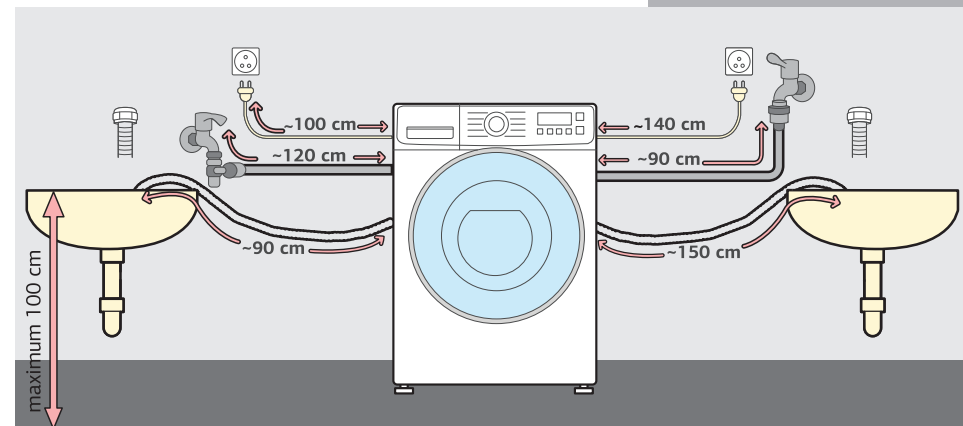
- The water inlet of the machine has a collar with parallel internal threads.
- The water supply point with an external thread/parallel thread should be available within 1 metre of the machine location.
- Do not stretch the water supply hose.



Note After connecting inlet hose to water tap, turn on the water tap to flush out foreign substances such as dirt, sand or sawdust in the pipelines.

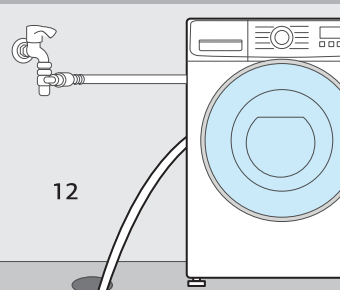
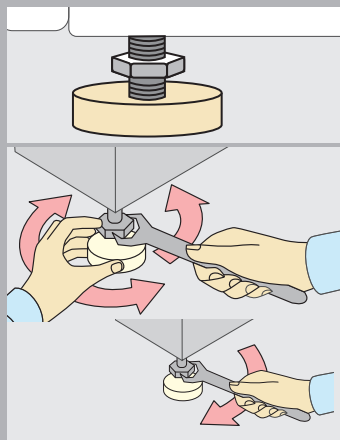
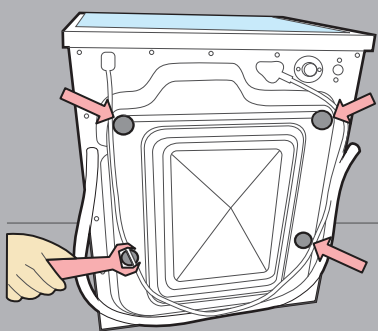
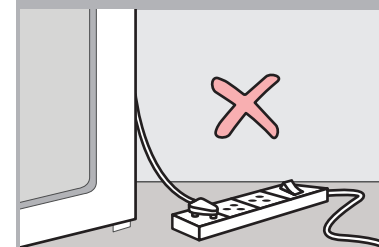
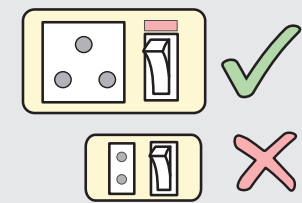
5 Connection to the drain hose

- The machine drains via a drain pump.
- Direct the end of the drain hose into a sink or a basin.
- The drain hose should not be placed higher than 100 cm and not lower than 60 cm above the floor.



6 Electrical connection

- It is mandatory to have a 16 Amp, 3 pin, 220–240 V AC, 50 Hz electrical point with a 16 Amp MCB or automatic short circuit protection device within 1 metre of the machine.
- Make sure your home has proper earthing and there is a firm connection between the plug and the socket. IFB recommends a separate MCB on the socket of the washing machine.
- Proper earthing of the power socket is critical to reliable performance.



1

Before you start

Check your machine

Ensure that the washing machine has been installed and connected properly.

• Electrical connection

It is mandatory to have a 16 Amp, 3 pin, 220–240 V AC, 50 Hz electrical point with a 16 Amp MCB or automatic short circuit protection device.

• Water connection

The water supply point with an external 3/4" parallel thread should be available within 1 metre of the machine location. Turn ON the water tap after the connection is secure.

• Drain water hose

Direct the end of the drain hose onto the floor or into a sink or basin up to a maximum height of 1 metre. Hook the hose over the edge of the basin and secure the same.

Your machine was tested before leaving the factory.

To remove any water left over from testing procedures, the first wash cycle should be carried out without laundry in the washing machine.

- Turn ON the water tap.
- Pull out the detergent dispenser drawer completely.
- Pour approximately 20 gm of detergent into the detergent dispenser drawer.
- Close the detergent dispenser drawer.
- Set the Program Selector knob to Cotton and select Hot Wash mode.
- Press the Start/Pause button.
- When the END LED starts flashing, switch OFF the washing machine by pressing the Power OFF button.

2

Working your machine

4 easy steps to do your laundry

Sort the laundry

- 1
 - Remove everything from pockets.
 - Close zippers, hooks and strings.
 - Pre treat collars, cuffs and stains.
 - Sort the laundry.
 - Check for wash care symbols/labels.

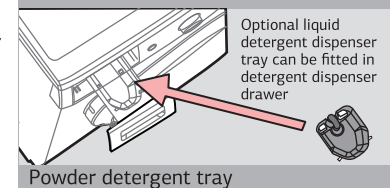
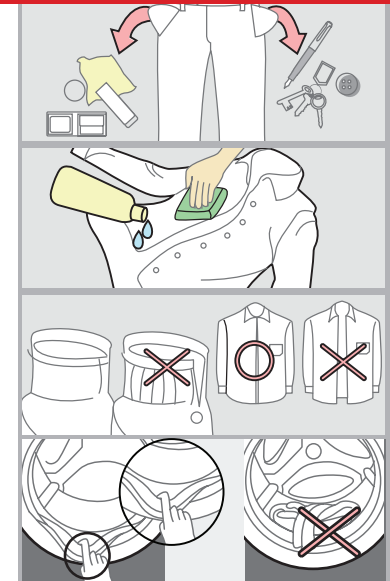
2 Load the laundry

- 2
 - Check and remove any small articles or any laundry items left inside the drum or on rubber gasket.
 - Place garments loosely inside the drum.
 - Load garments one by one.
 - Close the door and press till you hear a click.

3 Add detergent

- 3
 - Pull out the detergent dispenser drawer completely.
 - Dispense the correct amount of detergent.
 - Close the detergent dispenser drawer.
 - If liquid detergents are used, please insert the liquid detergent dispenser supplied into the detergent dispenser drawer. This ensures that the liquid enters the drum at the right stage of the wash cycle.
 - For Additive/Rinse program add liquid additives/softener into the liquid detergent dispenser. Do not exceed the maximum fill line. Overfilling can cause early dispensing of the fabric softener, which may stain clothes.

Note Always use detergents recommended for front load washing machines. Follow the detergent package directions as using too little or excessive detergent is a common cause of laundry problems. Soap flakes or granulated soap powders should not be used in your washing machine. When washing woollens or silk, remember to use the detergent type recommended by the manufacturer.





Powder detergent tray

Optional liquid detergent dispenser tray can be fitted in detergent dispenser drawer

Select program

- Switch the machine ON.
- Turn the Program Selector knob to the required program position. The Start/Pause LED will flash.

| PROGRAM | TYPE OF LAUNDRY |
|--|--|
| Mix/Daily  | Various types of cotton, synthetic or easy care garments except special garments such as silk/delicates, dark clothes, woollens, duvets, curtains etc. |
| Cotton  / Cotton Eco | Cotton colour-fast garments such as shirts, pants, uniforms, bed and table linen, towels, nightdresses, pyjamas, underwear etc. |
| CradleWash® | Hand wash only garments, as well as lingerie, delicate washable fabrics made of silk, satin, synthetic or sheer fabrics. |
| Woollens | Hand or machine washable wool or rich wool textiles. |
| Express Wash | Easy care fabrics made of cotton, linen, synthetic fibres or blended fabrics. |



- Choose the required Wash Mode
The LEDs corresponding to the available Wash Modes will flash. Non-flashing LEDs indicate that the mode is not applicable to that program. Default/selected mode will be indicated by a glowing LED.
- Change/cancel program
To change/cancel the program during the program run, pause the program and keep the Start/Pause button pressed for 3 secs. After 3 secs, the buzzer will beep and the program will be cancelled. Then, select the new program, if required.

Note Additional Wash Options give you more freedom in case you have a special need. So use them only if you need them.

Temperature/Steam Selection

- Wash Modes Cold, Warm, Hot and Steam are available.
- Wash Mode can be selected by pressing the Temperature/Steam selection button.
- Default settings of the Temperature are indicated by their respective LEDs (glowing or OFF).
- To select Warm, press the Temperature button once. The Warm LED will glow and the Hot LED will flash.
- To select Hot, press the Temperature button again. The Hot LED will glow and the Warm LED will flash.
- To select Steam, press the Temperature button one more time. Both the Warm and Hot LEDs will glow.
- To select Cold, press the Temperature button one more time. Both the Warm and Hot LEDs will flash.
- Selection of Temperature/Steam setting Repeats when the Temperature button is pressed again.

If Warm is selected, the laundry will be washed at 40°C water temperature.

If Hot is selected, the laundry will be washed at 60°C water temperature.

Steam

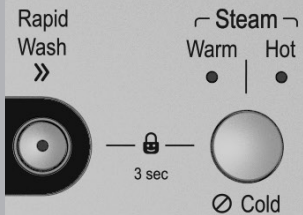
- If the Steam option is selected, steam is produced inside the drum at the most effective time to enhance the wash.

Note

- The Steam option can be selected for Mix/Daily and Cotton programs.
- It is normal that steam may not be visible during the wash/steam cycle.
- Do not touch the door during the steam cycle as the surface may be very hot.
- Do not attempt to open the door forcibly or reach into the machine during the steam cycle. The steam can cause severe burns.



2



Rapid Wash

- This function decreases the washing time by approximately 50% for lightly soiled clothes.
- This function can be used for Cotton, Mixed Fabrics, Delicates and Wool programs.
- To select Rapid Wash press the button once. The LED will glow, indicating it is selected.

Child Lock

- The Child Lock option can be activated only after starting the program.
- Activate or deactivate this feature by pressing the Wash Mode and Rapid Wash buttons simultaneously for 3 secs.
- The Child Lock Status LED will glow when selected.
- If Child Lock has been selected, no changes can be made while the program is running. Should the appliance be switched OFF and ON while a program is running, the program will continue from the point at which it was interrupted. The door remains locked at the end of the program.
- Deactivate this feature by pressing the Wash Mode and Rapid Wash buttons simultaneously for 3 secs.

Starting

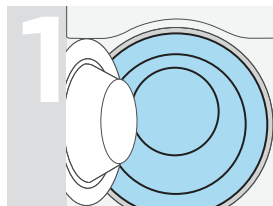
- Press Start/Pause button to start the wash. The Start/Pause LED will glow.
- To interrupt the cycle and change options, or to add/remove laundry, press the Start/Pause button once to pause the program.
- Check if door can be opened after pausing the machine for approx 90 secs. Do not try to open the door forcibly. Door Open will not be possible when the water level inside the drum is above the rubber sleeve level or if the water temperature inside the drum is high.
- Program status can be seen on the status LEDs.

Finishing

Please ensure you take the follow these steps after the program has ended to ensure the safety of your machine.

- When program ends, the 'End' status LED will glow.
- The Door Open option will not be possible once the 'End' status LED glows.
- The machine has been programmed to switch OFF all visual displays such as LEDs to save energy. The Start/Pause LED will slowly blink after the end of the program. This is in line with the latest Energy Using Product norms (EUP).

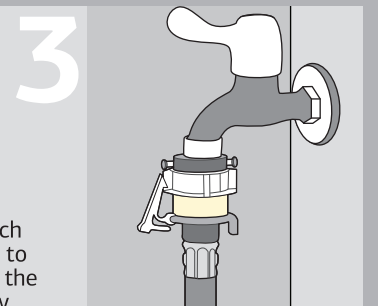
2



1 Open door and remove laundry. Wipe the moisture from the door and door seal. Leave the door ajar to dry the drum.





2 Turn the machine OFF. switch OFF the input power supply to the washing machine. Wipe the panel and cabinet with a dry cloth to remove the moisture.



3 Turn OFF the tap.

Wash guide map

| Program | Options | | | | | | | | |
|---|-------------|------|-----|-------|------------|---------------------------|----------------------------|-------------------|------|
| | Temperature | | | | | Spin Speed RPM | | Laundry Weight Kg | |
| | Cold | Warm | Hot | Steam | Rapid Wash | 6008 | 6010/7010 | 6 Kg | 7 Kg |
| Mix/Daily  | ✓ | ✓ | ✓ | ✓ | ✓ | 400-800/ No Final Spin | 400-1000/ No Final Spin | 3.0 | 3.0 |
| Cotton  | ✓ | ✓ | ✓ | ✓ | ✓ | 400-800/ No Final Spin | 400-1000/ No Final Spin | 6.0 | 7.0 |
| Cotton Eco | ✗ | ✓ | ✓** | ✗ | ✗ | 400-800/ No Final Spin | 400-1000/ No Final Spin | 6.0 | 7.0 |
| CradleWash® | ✓ | ✓ | ✓ | ✗ | ✗ | 400-600/ No Final Spin | 400-600/ No Final Spin | 2.0 | 2.0 |
| Woollens | ✓ | ✗ | ✗ | ✗ | ✓ | 400-800/ No Final Spin | 400-800/ No Final Spin | 2.0 | 2.0 |
| Express Wash | ✓ | ✗ | ✗ | ✗ | ✗ | 400-800/ No Final Spin | 400-800/ No Final Spin | 2.0 | 2.0 |
| Additives/Rinse | — | — | — | — | — | 400-800/ No Final Spin | 400-1000/ No Final Spin | 6.0 | 7.0 |
| Drain+Spin | — | — | — | — | — | 400-800/ No Final Spin | 400-1000/ No Final Spin | 6.0 | 7.0 |

- ✓ Option available and can be selected
- ✗ Option not available and cannot be selected
- Temperature selection not available

Note With Cotton Eco 60** program, the actual wash temperature attained will be lower than 60°C, although the wash performance will be at par with the cotton 60°C program.

Depending on water pressure, water hardness, water inlet temperature, quantity and type of textile, detergent used, foam detection, unbalance detection, degree of soiling, ambient condition, selected additional function and power supply fluctuations, the actual values given in the User Manual, or with the machine, can deviate from the declared standard values, as they are tested according to laboratory conditions. Program time can also skip or extend due to above mentioned conditions.

**Program setting for BEE test in conformity with IEC 60456 with maximum Spin Speed selection settings.

Note The design and specifications (includes colour/shades/aesthetic/features etc.) are subject to change without prior notice due to continuous improvement and product development.

Wash features

Inbuilt Easy Iron

A feature that reduces wrinkling of clothes after the final spin, making them easy to iron. Using a lower spin speed can help reduce creasing.

Express Wash

A special program to help wash your clothes faster. Good for gym clothes.

Eco Wash

A special program that gives the best wash quality using optimum energy and water.

Child Lock

This safety feature prevents the program selection being tampered with by children.

Auto Restart

Program resumes from the interrupted point on resumption of power supply.

2D Shower System

Scoops on the inner drum pick up water and deliver a shower through perforated fins on the laundry when the drum rotates. This ensures thorough wetting of clothes.

Laundry Add Option

Lets you add laundry, even after the wash cycle has started.

Cool Down Cycle

Hot water drained after the main wash cycle can be harmful for people and the environment. It is cooled down by taking on additional cold water automatically before draining.



2



Auto Balance System

If the wash load is unevenly distributed, the washing machine will redistribute the load to balance it inside the drum. In this process, the washing machine will start and stop during rotation cycles as it balances the load.



Start/Pause (Program Interrupt)

Gives you the liberty to start and pause the program whenever you want.



High-Low Voltage Protection

A smart microcontroller continuously monitors the online voltage fluctuations and temporarily stops the program to protect the machine in case the voltage drops below 150 ± 10 V or rises above 270 ± 10 V. The program will resume once the voltage is within safe operating range.



Aqua Energie

Energises water to get the best out of detergents and takes it deep inside the fabric to dislodge the dirt.



CradleWash®

India's first wash program for delicate fabrics provides gentle care that uses a soft, to-and-fro, rocking movement



Powered by Ai

A neural network-based algorithm detects the weight of laundry. It then optimises the wash—duration, water level, wash actions and the level of gentleness needed.

“Ai” LED will glow for the applicable cycles.

Note available on selected models only.

3

Get more from your machine

Tips for best results

Before washing

- Empty all pockets.
- Remove metal parts.
- Close any zips and fasten hooks etc before washing.
- Do not wash anything in the machine that is specified as non-machine washable on the wash care label.

While sorting

- Separate polyester fabrics from cotton fabrics.
- Try to have a mix of large and small clothes in each wash load.
- Dark clothes should be washed separately and not with whites.

While loading

- Load large items first, preferably half the total wash load.
- Do not wash single items—add one or two similar items.
- Place small items such as infants' socks, nylon stockings, handkerchiefs etc in a laundry bag, pillow case or something similar as they may get caught around the door. This will also save your laundry from getting lost.

Water softening

- Use water softening agents or adjust detergent dosage as recommended by the detergent manufacturer in case of hard water.

3

Maintenance and cleaning of your washing machine

Cleaning the detergent dispenser drawer

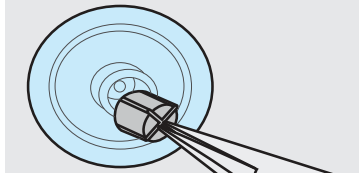
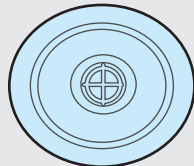
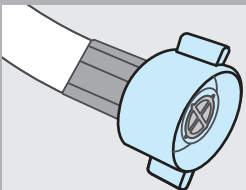
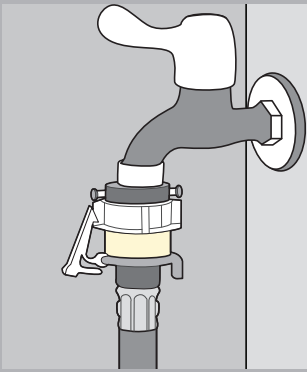
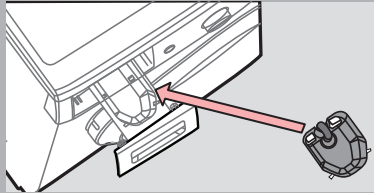
- Remove detergent residue regularly.
- Pull out the detergent dispenser drawer completely.
- Clean the detergent dispenser drawer with warm water.
- Clean the siphon. Remove the siphon from the compartment and wash under running warm water.
- Detergent residues can build up in the water jets on top of the detergent dispenser drawer housing.
- Before fixing the detergent dispenser drawer, use a bottle brush to clean it out.

Cleaning the water hose mesh filter

- Turn OFF taps. Disconnect the power supply to the machine. Unscrew the inlet hose from the machine and the tap. Drain water from the hose.
- Remove the filter mesh from the tap end of the inlet hose and clean under running water with a brush.
- Pull the sieve out of the magnetic valve with a pair of flat nosed pliers. Clean the sieve under running water with a brush. Then fit the sieve back into the valve.

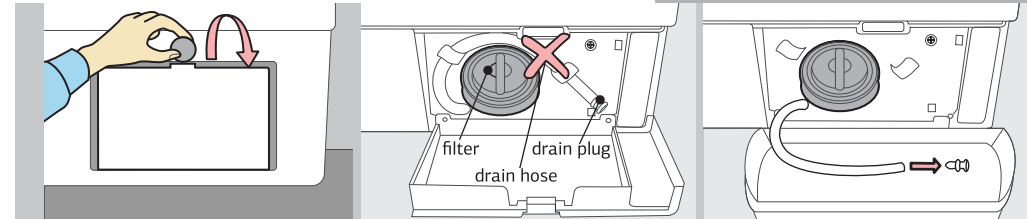
- Screw the inlet hose back to the machine and the tap. Ensure that the sieve and filter are in place. Turn ON the water tap to check if the connection is watertight.

Note Presence of excess dirt/sediments/sand in water can affect the wash quality as well as the reliability of water inlet valve

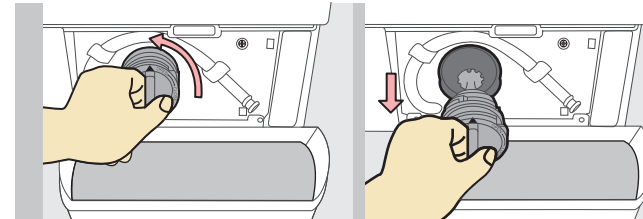


Cleaning the filter

- The filter should be cleaned more frequently in order to increase the life of the drain pump.



- Open the detachable bottom door by using a coin or key.
- Place a shallow container near the bottom door, open the filter by rotating it anti-clockwise to drain the water from the machine into the container and remove foreign objects like coins, pins or hooks, if any.



- Tighten the filter to its original positions and close the bottom door.
- Do not open the filter during a program run.

Use of descalant

- Use Descale minimum after 24 months of installation.
- Do not use Descale with Tub Clean. Tub Clean does not need any additive.
- Use Descale after 6 months or more as per hardness of water in your water supplies.
- Use only one Descale packet one time. Do not use more.

3

DESCAL
Appliance Descaler
brought to you by IFB.
Call IFB Care for details.

IFB
essentials

DESCAL
Appliance Descaler

I'LL REMOVE
LIMESCALE
& MAKE YOUR
APPLIANCE
LIVE
LONGER



3

Let's make washing easier. Here is a list of clothes and their approximate weights to help you figure out a perfect wash load.

Cloth weights

Sheets

| | |
|---------------------|-------|
| Cotton (double) | 1 Kg |
| Cotton (single) | 500 g |
| Non-cotton (double) | 650 g |
| Non-cotton (single) | 400 g |

Pillow slips

| | |
|---------------------|-------|
| Cotton pillow slips | 110 g |
| Other pillow slips | 85 g |

Table cloths

| | |
|-------------------|-------|
| Small | 230 g |
| Large | 600 g |
| Table napkins (4) | 150 g |

Bedspread

3 Kg

Blankets

| | |
|---------|--------|
| Wool | 2 Kg |
| Acrylic | 1.5 Kg |

Bottoms

| | |
|-------------|-------|
| Lungi/Dhoti | 200 g |
| Skirts | 200 g |
| Trousers | 250 g |
| Jeans | 400 g |

Tops

| | |
|------------------|-------|
| Cotton shirts | 280 g |
| Other shirts | 200 g |
| Cotton blouses | 140 g |
| Other blouses | 100 g |
| Woollen sweaters | 400 g |
| Heavy sweaters | 300 g |
| Light sweaters | 150 g |

Other clothes

| | |
|----------------------|--------|
| Cotton sarees | 650 g |
| Synthetic sarees | 350 g |
| Bath towels | 600 g |
| Hand towels | 250 g |
| Pyjama kurta | 400 g |
| Panties | 60 g |
| Cotton vests | 100 g |
| Underslips | 100 g |
| Long socks, 2 pairs | 150 g |
| Short socks, 2 pairs | 85 g |
| 6 handkerchiefs | 85 g |
| 12 napkins | 1.1 Kg |



| Laundry Items | 6 Kg | 7 Kg |
|-----------------|------|------|
| Bath towels | 2 | 2 |
| Shirts | 3 | 4 |
| Blouses | 2 | 3 |
| Skirts | 2 | 4 |
| Pair of pants | 1 | 1 |
| Pairs of jeans | 2 | 3 |
| T-shirts | 3 | 3 |
| Sets of pyjamas | 3 | 4 |
| Tea towels | 2 | 2 |

The chart indicates average weights of clothes. The recommended weight of your wash load should not be exceeded to ensure that your machine gives your clothes an effective wash. Suggested weights are approximate and may vary.

4

Useful information about your machine

Troubleshooting

When the washing machine does not function properly, check the following points before you contact your service provider.

SYMPTOM program does not start.

PROBABLE CAUSE

- Power supply is not turned ON or POWER button not pressed.
- Electrical power cord may not be plugged in or connection may be loose.
- Program not selected.
- Start/Pause button not pressed.
- Water supply tap not turned ON, no water supply or low pressure.
- Door not closed properly.

SOLUTION

- Ensure that supply mains switch and POWER button are switched ON. Program LED will glow.
- Make sure that the plug is plugged in and check for any loose connection in the plug/socket.
- Ensure that the Program Selector knob is rotated to the correct program setting.
- Ensure that the Start/Pause button is switched ON. Start Pause LED will glow.
- Open the tap fully and ensure that there is water supply with normal water pressure.
- Open and close the door firmly.

SYMPTOM Washing machine door does not open.

PROBABLE CAUSE

- Machine is in operation.
- Child Lock is active.

SOLUTION

- Check if the program is active. If yes, pause the program and wait for approx 2 min for the door to be unlocked. For safety reasons, the washing machine door cannot be opened when the water level, temperature or speed are too high.
- Deactivate the Child Lock and wait for approximately 2 min for door to unlock.

SYMPTOM Water does not enter into machine. Detergent not being flushed into the drum.**PROBABLE CAUSE**

- Water supply tap not turned ON/ no water supply/low water pressure.
- Door not closed properly.
- Bent inlet hose, sieve or inlet valve/inlet hose clogged.

SOLUTION

- Open the tap fully and ensure that there is water supply with normal water pressure.
- Open and close the door firmly.
- Check if the inlet hose is bent or the sieve is blocked.

SYMPTOM Suds escaping from detergent dispenser tray. Excessive foam in drum. Detergent residue on clothes.**PROBABLE CAUSE**

- Detergent used is not a front load detergent.
- Excessive detergent used.
- Overloading of clothes.
- Cold wash program.
- Low water pressure.

SOLUTION

- Use detergent recommended for front load washing machines only.
- Reduce the detergent dosage.
- Do not overload the washer.
- Use a hot wash program.
- Start when the water pressure is normal.

SYMPTOM Water leakage from machine.**PROBABLE CAUSE**

- Inlet hose connection loose.
- Filter not tightened.
- Inlet hose leaking.

SOLUTION

- Check and tighten the inlet hose connection.
- Check and tighten the filter.
- Contact IFB Care.

SYMPTOM Machine does not drain.**PROBABLE CAUSE**

- Filter clogged.
- Drain hose end above 1 metre from the floor level.
- Drain hose kinked or clogged.

SOLUTION

- Check and clean the filter.
- Drain hose should be placed between 1 metre to ground level.
- Clean and straighten the drain hose.

SYMPTOM Machine does not spin or clothes stay wet.**PROBABLE CAUSE**

- Load is too small. Unbalanced load.
- Overloading of clothes
- Filter clogged.
- Excessive/high foaming detergent.

SOLUTION

- Add 1–2 similar items to help balance the load. Rearrange the load to allow proper spinning.
- Load clothes as per the fabric type and capacity recommended for the chosen program.
- Check and clean filter.
- Use detergent recommended for front load washing machines only.

SYMPTOM Machine vibrates more during spinning.**PROBABLE CAUSE**

- Machine not levelled properly.
- Filter clogged partially.
- Unbalanced load.

SOLUTION

- Check and level the machine.
- Unclog the filter.
- Add 1–2 similar items to help balance the load. Rearrange the load to allow proper spinning.

SYMPTOM Motor noise.

- It is normal for noises to be heard while motor is running.

SYMPTOM Pump noise.

- It is normal for noises to be heard from the pump during the start up and final stage of draining. However, check for a clogged filter.

SYMPTOM Program cycle time delayed.

- It is normal as the washing machine time may vary depending upon the type and quantity of laundry, inlet water pressure, inlet water temperature, variations in power supply and other usage conditions.
- If there is an unbalanced load, the machine may make several attempts to redistribute the clothes in order to minimise vibrations, resulting in extended program duration.

SYMPTOM Poor soil removal.**PROBABLE CAUSE**

- Incorrect detergent dosage.
- Use of cold wash program.
- Load size not as per capacity.
- Stains on clothes.
- Mix of heavily soiled items with lightly soiled items.

SOLUTION

- Use correct amount of detergent for load size and water hardness.
- Use hot wash program.
- Use correct load size.
- Pre-treat stain and any soil according to directions given under 'Easy tips to remove stains'.
- Separate heavily soiled items from lightly soiled ones.

SYMPTOM Blue stains on clothes.**PROBABLE CAUSE**

- Excessive fabric additives. Cheaper quality additives.

SOLUTION

- Do not overfill the fabric softener and do not pour liquid fabric softener directly onto fabric.

SYMPTOM Black or grey marks on clothes.**PROBABLE CAUSE**

- Less quantity detergent/hard water.
- Some clothes already with existing stains.

SOLUTION

- Use correct amount of detergent for load size, amount of soil and water hardness.
- Do not mix good clothes with stained clothes.

SYMPTOM Yellow or brown rust stains.**PROBABLE CAUSE**

- Dirty incoming water.

SOLUTION

- Before washing, run the water for a few minutes to clean the pipelines. Start the program only when the water is clean.
- To restore a discoloured load of whites use a rust remover safe for fabrics.

SYMPTOM Residue of detergent.**PROBABLE CAUSE**

- Overloading of clothes.
- Excessive use of detergent.
- Cold wash program.

SOLUTION

- Do not overload the washer.
- Use proper amount of detergent.
- Use hot wash program.

SYMPTOM Error LED flashes 1 time, repeats after 3 secs.**PROBABLE CAUSES**

- Door not closed properly or not locked.
- Door not getting unlocked (at the end of program).

SOLUTION

- Open and then close the door firmly.
- Cancel the program and switch OFF the appliance, wait for 2 min and check if the door can open. Do not try to open the door forcibly. If the door cannot open or if the same error indication persists, cancel the program and switch OFF the appliance. Contact IFB Care.

SYMPTOM Error LED flashes 2 times, repeats after 3 secs.**PROBABLE CAUSES**

- Water tap turned OFF.
- Water supply not available or LOW water pressure.
- Sieve/filter blocked in water inlet hose.
- Bent/damaged water inlet hose.

SOLUTION

- Turn ON the tap.
- The washing machine will start automatically on resumption of water supply or press the Start/Pause button twice to start refilling.
- Clean the sieve filter (Refer to the section cleaning the water hose mesh filter).
- Remove bend/damage.

SYMPTOM Error LED flashes 3 times, repeats after 3 secs.**PROBABLE CAUSES**

- Water not drained.
- Filter is blocked.
- Exhaust hose clogged or bent.

SOLUTION

- Press Start/Pause button to restart the drain.
- Switch OFF the appliance. Drain the water using a drain pump and then clean the filter.
- Clean the exhaust hose/remove bend.

SYMPTOM Error LED flashes 4 times, repeats after 3 secs.**PROBABLE CAUSES**

- Laundry load is unbalanced.

SOLUTION

- If the laundry load is small (eg a pair of jeans, 2-3 Turkish towels, bathrobe etc) it can lead to an unbalanced condition. Add 1-2 similar items to help balance the load, rearranging it to allow proper spinning.

SYMPTOM Error LED flashes 5 times, repeats after 3 secs.**PROBABLE CAUSES**

- Input voltage is high.
- Input voltage is low.

SOLUTION

- Machine will start automatically after the voltage decreases to safe operating level. If this error display persists or occurs frequently, contact your electrician to locate the fault in the electric system.
- Machine will start automatically after the voltage increases to safe operating level. If this error display persists or occurs frequently, contact your electrician to locate the fault in your electric system.

SYMPTOM Error LED flashes 7 times, repeats after 3 secs.**PROBABLE CAUSES**

- Water temperature is above 60° C at the start of program.

SOLUTION

- Start new/Drain program once the water cools down to approx 60° C or cancel the program, switch OFF the appliance, wait for 2 secs and restart. If the same error persists, cancel the program, switch OFF the appliance and contact IFB Care.

SYMPTOM Error LED flashes 8 times, repeats after 3 secs.

- Cancel the program, switch OFF the appliance, wait for 2 secs and restart. If the error persists, turn OFF the tap, cancel the program, switch OFF the appliance and contact IFB Care.

Technical specifications

| | |
|--------------------------------|--|
| Model | Diva Aqua VSS/SXS/BXS/SBS 6008 Diva Aqua VSS/SXS/BXS/SBS/GXS/ GBS/MXS/MSS 6010 Diva Aqua VSS/SXS/BXS/SBS/GBS/ MXS/MSS 7010 |
| Power supply | 220–240 V, Single Phase, 50 Hz |
| Dimensions | 59.8 x 51.3 x 87.5 (6008/6010) |
| Net Size (W X D X H cm) | 59.8 x 61.3 x 87.5 (7010) |
| Net weight | 71 Kg (6008/6010) 65 Kg (7010) |
| Capacity | 6 Kg of dry cotton (6008/6010) 7 Kg of dry cotton (7010) |
| Wash care programs | 8 |
| Selector buttons | Temperature/Steam, Rapid Wash Start/Pause, Power |
| Selector knob | Program Selector |
| Spin speed | 800 RPM (6008) 1000 RPM (6008/7010) |
| Water consumption* | 9 Ltr/Kg/Cycle |
| Water pressure | 0.3–10 Bar (3.5–10 Ltr/min) |
| Power Rating | Refer product label |
| Drain pump rating | 30 W |
| Heater rating | 2000 W |
| Drum | Stainless Steel |

* Program setting for BEE test in conformity with IEC 60456.