

 ZEBRONICS

Soundbar
MELN
JUKE BAR
9450
PRO DOLBY 5.1



User Manual

www.zebronic.com

Important Safety Instruction

Thank you for purchasing the **ZEB-JUKE BAR 9450 PRO DOLBY 5.1** Soundbar. Please read this user manual carefully and keep for future reference.

Warning



Caution:

- To reduce the risk of electric shock, do not dismantle the product and do not expose the apparatus to rain or moisture. No user-serviceable parts inside.
- Refer servicing to qualified personnel only.



The lightning flash within an equilateral triangle is intended to alert you to the presence of uninsulated dangerous voltage within the product's enclosure that may be of sufficient magnitude to constitute an electric shock to a person or persons.



Important! This symbol alerts you to read and observe important warnings and instructions on the unit or in this manual.

Notice:

This appliance is not intended for use by persons (including children) with reduced physical sensory or mental capabilities, or lack of experience and knowledge, unless they have been given supervision or instruction concerning use of the appliance by a person responsible for their safety.

Children should be supervised to ensure that they do not play with the appliance.

1. To prevent possible hearing damage, do not listen at high volume levels for long time periods or a sudden high volume level.



2. Never use the device unsupervised! Switch off the device whenever you are not using it, even if not using it only for a short while.
3. The appliance is not intended to be operated by means of an external timer or separate remote control system.
4. If the supply cord is damaged, it must be replaced by the manufacturer, its service agent or similarly qualified persons in order to avoid a hazard.
5. Before operating this system, check the voltage of this system to see if it is identical to the voltage of your local power supply.
6. The unit should not be impeded by covering the ventilation opening with items such as newspaper, table-cloths, curtains etc. Make sure that there are at least 20 cm of space above and at least 5 cm of space on each side of the unit.
7. The apparatus must not be exposed to dripping or splashing liquid, no objects filled with liquids such as vases, should be placed on the apparatus.
8. To prevent fire or shock hazard, do not expose this equipment to direct heat, rain, moisture or dust.
9. Do not position this unit near any water sources e.g. taps, bathtubs, washing machines or swimming pools. Ensure that you place the unit on a dry, stable surface.

10. Do not place this unit close to a strong magnetic field.
11. Do not place the unit on a amplifier or receiver.
12. Do not place this unit in a damp area as the moisture will affect the life of electric components.
13. Do not attempt to clean the unit with chemical solvents as this might damage the finish. Wipe with a clean, dry or slightly damp cloth.
14. When removing the power plug from the wall outlet, always pull directly on the plug, never pull on the cord.
15. Depending on the electromagnetic waves used by a television broadcast, if a TV is turned on near this unit while it is also on, lines might appear on the LED TV. Neither this unit nor the TV is malfunctioning. If you see such lines, keep this unit well away from the TV set.
16. The mains plug is used to disconnect the device, the disconnected device should remain readily operable.

Important Safety Instructions

1. Read these instructions. Keep these instructions. Follow all instructions. Heed all warnings.
2. Do not use this apparatus near water.
3. Clean only with dry cloth.

4. Do not block any ventilation openings. Install in accordance with the manufacturer's instructions.

5. Do not install near any heat sources such as radiators, heaters, stoves, or other apparatus (including amplifiers) that produce heat.

6. Protect the power cord from being walked on or pinched particularly at plugs, convenience receptacles or at the point where they exit from the apparatus.

7. Only use attachments/accessories specified by the manufacturer.

8. Unplug this apparatus during lightning storms or when unused for long periods of time.

9. Refer all servicing to qualified service personnel. Servicing is required when the apparatus has been damaged in any way, for example, when the power-supply cord or plug is damaged, liquid has been spilled or objects have fallen into the apparatus, the apparatus has been exposed to rain or moisture, does not operate normally, or has been dropped.

10. The AC plug is used to disconnect the device, the disconnected device should remain readily operable. In order to disconnect the apparatus from the AC power completely, the AC plug must be removed from the AC outlet completely.

Preparation for Use

Unpacking and Set Up

- Remove the Sound bar from the carton and remove all packing material from the Sound bar. Save the packing material, if possible, in case the Sound bar ever needs to be serviced or transported.
- The original carton and packing material is the only safe way to pack your Sound bar to protect it from damage in transit.
- Remove any descriptive labels or stickers on the front or top of the cabinet. Do not remove any labels or stickers from the back or bottom of the cabinet.
- Place your Sound bar on a level surface such as a table, desk or shelf, convenient to an AC outlet, out of direct sunlight, and away from sources of excess heat, dirt, dust, moisture, humidity, or vibration.
- Unwind the Line cord connecting the AC adapter and extend it to its full length.

Protect Your Furniture

This model is equipped with non-skid rubber 'feet' to prevent the product from moving when you operate the controls. These 'feet' are made from non-migrating rubber material specially formulated to avoid leaving any marks or stains on your furniture. However certain types of oil based furniture

polishes, wood preservatives, or cleaning sprays may cause the rubber 'feet' to soften, and leave marks or a rubber residue on the furniture. To prevent any damage to your furniture we strongly recommend that you purchase small self-adhesive felt pads, available at hardware stores and home improvement center everywhere, and apply these pads to the bottom of the rubber 'feet' before you place the unit.

Important Notes

- Safety and operating instruction manual should be retained for future reference.
- The apparatus should not be exposed to dripping, splashing or placed in a humid atmosphere such as a bathroom.
- Do not install the product in the following areas:
 - Places exposed to direct sunlight or close to radiators.
 - On top of other stereo equipment that radiate too much heat -Blocking ventilation or in a dusty area.
 - Areas where there is constant vibration.
 - Humid or moist places.
 - Do not place near candles or other flames.
- Operate the product only as instructed in this manual.

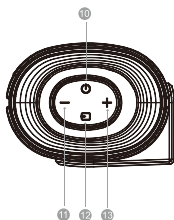
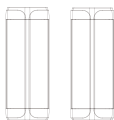
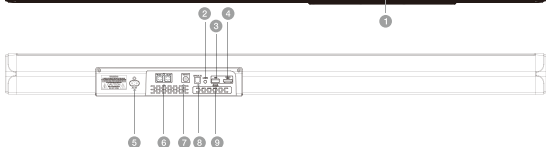
- Before turning on the power for the first time, make sure the sound bar is plugged to power outlet.
- For safety reasons, do not remove any covers or attempt to gain access to the inside of the product. Refer any servicing to qualified personnel.
- Do not attempt to remove any screws, or open the casing of the unit; there are no user serviceable parts inside. Refer all servicing to qualified service personnel.

Power Source:

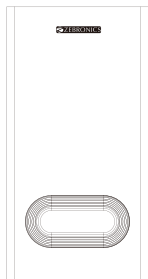
This soundbar is designed to operate in AC 220-240V 50/60Hz.

Product Representation

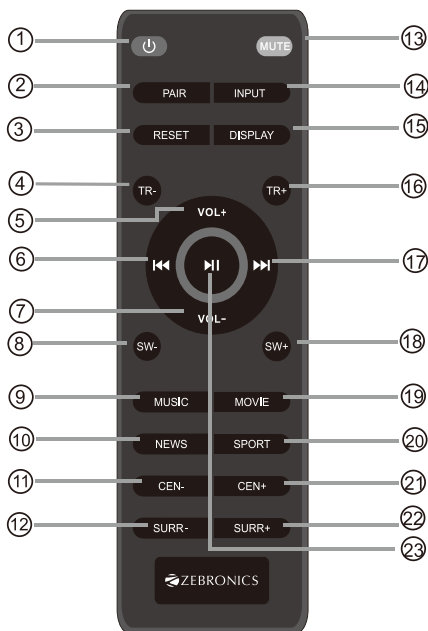
Sound Bar







1. LED DISPLAY
2. LINE IN (AUX)
3. USB
4. HDMI (ARC)
5. AC IN
6. SR/SLOUT
7. SUB OUT
8. OPTICAL
9. FOR UPDATE
10. POWER/STANDBY
11. VOL-
12. INPUT
13. VOL+



Remote Control

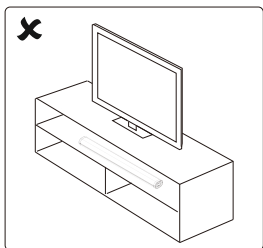
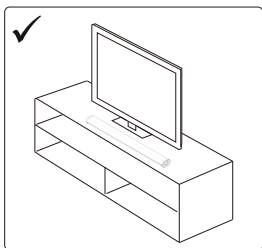


1.  : Standby mode for power on/off.
2. PAIR : Connect or disconnect to the pairing device. (Press the button more than 2 seconds).
3. RESET : Reset all CH volume levels to default of factory setting and switch EQ to Music mode when press and hold button more than 2 seconds.
4. TR- : Treble volume down.
5. Volume+ : Master volume up
6.  Pre button : Previous program Only work under USB & BT Mode).
7. Volume- : Master volume down.
8. SW : Subwoofer Channel volume down.
9. MUSIC : Select the Music EQ effect.
10. NEWS : Select the News EQ effect.
11. CEN- : Center Channel volume down.
12. SURR- : Surround Channel volume down.
13. MUTE : Mute mode.
14. INPUT : Input mode (AUX/USB/ARC/OPT/BT).
15. DISPLAY : LED display on/off, Only work under power on.
16. TR+ : Treble volume up.
17.  Next button : Next program. (Only work under USB and BT mode).
18. SW+ : Subwoofer Channel volume up.
19. MOVIE : Select the Movie EQ effect.
20. SPORT : Select the Sport EQ effect.
21. CEN+ : Center Channel volume up.
22. SURR+ : Surround Channel volume up.
23.  : Play/Pause Only work under USB and BT mode).

Positioning the Sound Bar

Place on a flat Surface

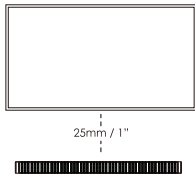
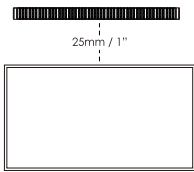
Place the sound bar horizontally on a flat surface such as a TV unit or shelves and align it centrally with the TV screen. Allow some space between the speaker and the wall. Don't place inside a cabinet or an a walled shelf. Follow this guidance for best sound output and good airflow around the sound bar.



Mount on the wall

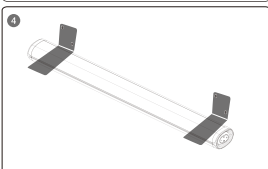
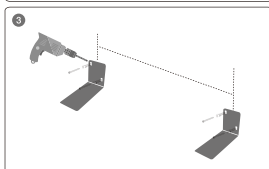
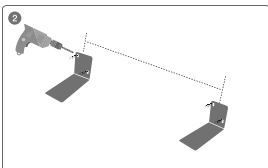
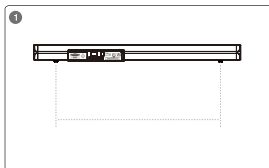
WARNING : If you don't feel confident to correctly and securely wall-mount the sound bar, Seek the assistance of an experienced person of professional.

Install the speaker on a vertical, fast, reinforced area of wall. For plaster walls, it is recommended to screw into wall studs for greater security. For optimum performance, allow at least 25mm/1" distance between the sound bar and the TV.



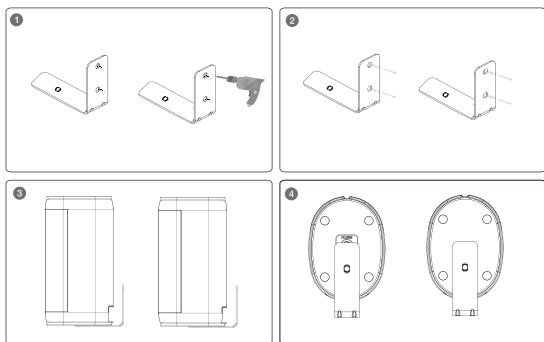
Follow below steps to mount the sound bar on the wall

1. Open 4 holes in the wall referring to iron bracket for wall mounting, the spacing of the holes in the wall is corresponding to the distance between sound bar pads.
2. Fix the plastic anchor in the 4 holes of the wall mounting bracket.
3. Fix the screws on the plastic anchor and tighten the screws to ensure that the wall mounting bracket will not shake.
4. After fastening the screws, Put the sound bar pads into the extension of the wall mounting bracket.



Follow below steps to mount the surround speaker on the wall

1. Open 4 holes on the wall. For the distance between the 2 holes, please refer to the soundbar bracket wall mounting.
2. Fasten the plastic anchors in the 4 holes of the wall mount bracket.
3. Then attach the provided screws to the plastic anchors and tighten the screws to ensure that the wall mount bracket does not shaking.
4. Place the surround speakers on bracket with the corresponding holes at the bottom, then fix the provided screws in the bottom of the bracket and the holes of the surround speakers, then tighten the screws.



OPERATE INSTRUCTIONS

Setting the Soundbar

1. Plug in the power cord and the display will light up (Standby mode)
2. Switch on the sound bar by pressing "STANDBY" button on sound bar or on remote controller. After switching on, the default input mode will appear on display.
3. Input modes can be changed by pressing the "INPUT" button on sound bar or on remote controller.
4. Below are input mode names appearing in the soundbar display:

bt - Bluetooth Pairing mode

AUX - AUX mode

OPT - Optical mode

Hd - ARC mode

USB - USB mode

Powering On/Off

5. Plug the power cord of sound bar into a wall outlet, it will automatically enter standby mode.
6. Short-press the "**STANDBY**" button on sound bar or on remote controller to turn on the sound bar.
7. To turn off, press and hold the "**STANDBY**" button for 2 seconds, then unplug from wall outlet.



Playing Audio via BT Connection

1 Turn on the sound bar and then short-press the “**INPUT**” button on sound bar or remote controller to switch it to BT mode and LED display on the sound bar will flicker in the Bluetooth pairing mode.

2. Activate the pairing function on your phone or other compatible device and select “**ZEB-JUKE BAR 9450 PRO DOLBY 5.1**” by BT connection.

3. When successfully paired, you will hear a tone and LED display will turn on “**bt**” and stop flickering. Then music that you selected can be played on the sound bar.

4. The remote controller includes BT mode playback controls.



Notes:

- If your pairing device switched off or manual disconnected, the sound bar will automatically enter pairing mode.
- If the connected device is switched off or manual disconnected, the sound bar will automatically enter pairing successfully connected device will be re-established once you re-enter wireless range(10 meters). to connect to other devices, repeat the above pairing steps

• *There is no automatic shutdown in pairing mode. The sound bar will remain in pairing mode even if no device is paired, so switch off if not in use*

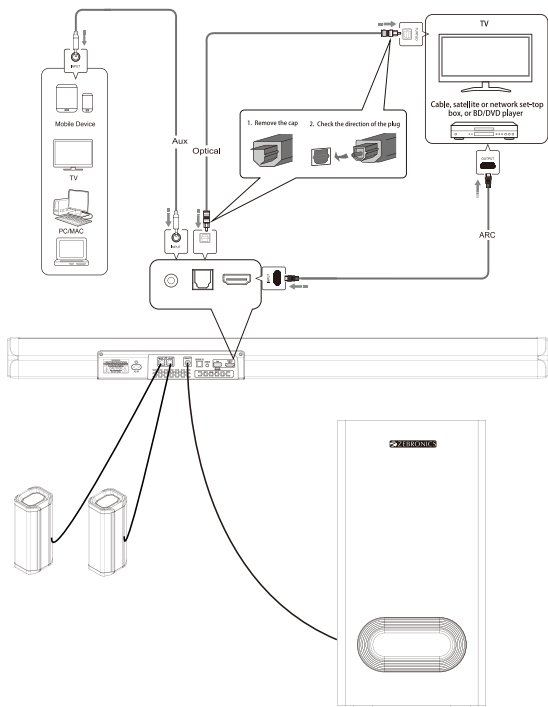
Playing Audio via USB Port

The sound bar automatically switches to USB input mode with the LED display "USB" when a USB flash drive is inserted (this mode isn't selectable on the sound bar or remote control unless a USB flash drive is connected).

1. Ensure that your USB flash drive contains MP3 audio files (other file types not supported)
2. Connect the USB flash drive to the USB port on the sound bar (or your own USB extension cable connected to the USB port); music will automatically play
3. The remote control includes USB input mode playback controls



Using the Soundbar



Audio input (AUX) Connection

1. Firstly connect the soundbar to your PC, laptop, smart-phone, TV, or other audio devices by using an AUX cable provided. Make sure that these devices have both AUX IN and AUX OUT terminals.
2. Then press the INPUT button on remote control or soundbar to switch the soundbar to Aux mode, once the soundbar is connected in Aux mode, the screen will display "AU" and the music on your connected device will play. Playback can only be controlled on your connected device.

Note: For some computer, you may need to access the audio control panel to manually set the sound bar as above picture.

HDMI (ARC) Mode

1. The Soundbar supports HDMI (ARC) with Audio Return Channel (ARC). If your TV is HDMI (ARC) compliant, you can hear the TV audio through your Sound bar by using a single HDMI (ARC) cable.
2. Using a High Speed HDMI (ARC) cable, connect the ARC connector on the sound bar to the HDMI (ARC) connector on the TV. The HDMI (ARC) connector on the TV might be labelled differently. For details, see the TV user manual.
3. When HDMI (ARC) is connected, TV sound setting in "sound output" mode should be set as <external Dolby or Auto mode>, in addition,

digital audio output mode should be set as <automatic> or <decoded output as Dolby>. When the HDMI (ARC) cable is connected, the TV digital audio output is set as Dolby or Auto mode. Then start playing music on the TV.

4. Press "INPUT" button on the remote control or on soundbar to select Hd - HDMI (ARC) mode. Different TV might be different setting, please refer to your TV User Manual.

5. Use the volume buttons to adjust the volume to your requirements.

6. You can also change the audio settings by using the relevant buttons on the remote control.

Note:

1. When connecting a device such as a TV/Set-top box/DVD/game console with HDMI (ARC) cable, set the audio output mode of the device to Dolby or Auto mode <digital HDMI (ARC) output>.

2. The TV is connected to a HDMI (ARC) port with sound bar. Different TVs might have different setup menus, but the operation approach is the same.

3. If needs to connect set-up box meanwhile, please firstly connect the HDMI (ARC) connector and paired to the soundbar. Then connect the set-top box.

Optical Mode

- Remove the cap of optical cable (keep the cap for the future use); check the direction of the plug. Connect the soundbar and TV with the optical cable.

- Use this mode to play music from a TV with optical digital output on the sound bar. In TV

sound settings, select the soundbar optical connection (output for audio). When the optical cable is connected, the TV audio output is set to Dolby or Auto mode.

- The TV must have an optical digital output. Use the optical cable to make the connection as follows:

1. Connect the optical cable to the optical digital output of your TV.
2. Connect the optical cable to the optical digital input of your soundbar.
3. Switch on the TV set and the soundbar. Set the connected TV to “Dolby or Auto mode”.
4. Start playing on the TV.
5. Press “INPUT” button on the remote control or on the soundbar to select **OPT - OPTICAL** mode.
6. Use the volume buttons to adjust the volume to your requirements.
7. You can also change the audio settings by using the relevant buttons on the remote control.

Note:

1. When connecting a device such as a TV/Set-top box/ DVD/ game console with optical cable, set the audio output mode of the device to Dolby or Auto mode (digital optical output).
2. Do not bend the optical cable, otherwise the cable inside will be damaged.

Features:

Wireless BT/USB/AUX/Optical IN/HDMI (ARC)

16.51 cm Subwoofer

Remote control

Wall Mountable

5.1 Channel Soundbar

LED Display

Dolby Audio

Volume/Media Control

Specifications

Output Power

Subwoofer : 150 watts

Soundbar : 225 watts

Satellites : 75 watts x 2

Total : 525 watts

Driver Size

Subwoofer : 16.51 cm x 1

Soundbar : (5.8 cm x 9 cm) x 3

Satellites : (5.2 cm x 7.5 cm) x 2

Impedance

Subwoofer : 4Ω

Soundbar : 8Ω

Satellites : 8Ω

Frequency response : 45Hz-20KHz

S/N Ratio : ≥66dB

Separation : ≥42dB

File format support : MP3 (USB)

Line input : 3.5 mm, Optical IN,
HDMI (ARC)

| | |
|---------------------------------|--------------------------------------|
| Max supported memory size (USB) | : 32 GB |
| BT name | : ZEB-JUKE BAR 9450 PRO DOLBY 5.1 |
| BT version | : 5.0 |
| Product Dimension (W x D x H) | |
| Subwoofer | : 19 x 30.6 x 36.7 cm |
| Soundbar | : 96 x 10 x 7.3 cm |
| Satellites | : 7.3 x 10 x 19 cm |
| Net. Weight | |
| Subwoofer | : 4.2 kg |
| Soundbar | : 3 kg |
| Satellites | : 500g x 2 |
| Total | : 8.2 kg |

Package Contents

| | |
|--------------------------------------|-------|
| Sound Bar | : 1 U |
| Subwoofer | : 1 U |
| Satellite | : 2 U |
| Remote Control | : 1 U |
| Input Cable | : 1 U |
| HDMI Cable | : 1 U |
| Wall Mount Bracket with Fasteners | : 1 U |
| Power Cord | : 1 U |
| QR Code Guide | : 1 U |

Troubleshooting

| PROBLEM/TROUBLE | POSSIBLE CAUSE | SOLUTION |
|---|---|--|
| There is no sound output from sound bar. | Another input source is selected. | Select an appropriate input source. |
| | The mute function is activated. | Cancel the mute function. |
| | The volume of sound bar or TV/other device is adjusted too low. | Increase the volume level on sound bar or by remote control or on TV. |
| | The power cable of the unit is not connected properly. | Make sure that the power cable of the unit is connected to an AC wall outlet securely. |
| | Input jacks on a playback device are connected. | Connect the input jack on the sound bar and the output jack on the playback device. |
| | Signals that the sound bar cannot playback when being input. | When sound bar and TV or other devices are connected by an audio cable through TV (ARC) port output, Select the correct audio input and output. Make sure the digital audio output setting on the playback device to PCM format. Since the output format of our sound bar is PCM, if it is used, the decoding format of TV or other devices will be adjusted to PCM state. |
| The sound is distorted or echoed. | TV volume is not muted. | If you play audio from TV through the sound bar, make sure that the TV is muted. |
| The volume decreases when the unit is turned on. | The automatic volume adjustment function is activated. To prevent excessive loudness, the unit automatically controls its volume within a certain level when the unit is turned on. | Turn up the volume as required. |
| Noise is heard. | The sound bar is too close to another digital or high-frequency device. | Move those devices away from the sound bar. |
| The unit cannot be operated by using the remote control. | The unit is out of the operating range. | Use the remote control within the operating range. |
| | The batteries are weak. | Replace with new batteries. |
| | The remote control sensor of the sound bar is exposed to direct sunlight or strong lighting. | Adjust the lighting angle or reposition the sound bar. Make sure our product cannot be used in sunlight. |
| The TV cannot be operated by using the TV's remote control. | The unit is blocking the TV's remote control sensor. | Position the unit so that it does not obstruct the TV's remote control sensor. |
| A device cannot connect the sound bar or the unit cannot be connected to a Bluetooth device. | Bluetooth function of the device is not activated, not paired or connected correctly. | Restart the sound bar and try pairing again. You have not enabled the Bluetooth function of the device; see the user manual of the device on how to enable the function and correctly connected the device. The sound bar is already connected with another Bluetooth device. Disconnect the connected device, and then try again. |
| | Bluetooth is not selected as the input source. | Select Bluetooth as the input source. |
| | The unit is connected to a different Bluetooth device. | Un-pair the Bluetooth device that is currently connected and pair with the desired Bluetooth device. |
| | The unit is too far away from the Bluetooth device. | Move the Bluetooth device closer to this unit. |
| | A device emitting electromagnetic waves (such as a microwave oven, a wireless device and so on) may be placed nearby. | Do not use this unit near devices that emit electromagnetic waves. |
| | The Bluetooth device that you are using may not support the protocol. | Use a Bluetooth device that supports the protocol. |
| | The connection profile registered in the Bluetooth device may not be functioning correctly for some reason. | Delete the connection profile in the Bluetooth device and then connect the Bluetooth device to this unit. |
| Sound quality of audio play from a connected Bluetooth device is poor and connection is not stable. | The Bluetooth reception is poor. | Move the device closer to the sound bar, or remove any obstacle between the device and the sound bar. |
| No sound can be heard or sound breaks (Bluetooth mode) | The volume on the Bluetooth device may be too low. | Raise the volume on the Bluetooth device. |
| | Bluetooth is not selected as the input source. | Select the Bluetooth as the input source. |
| | Playback on the device has not been performed. | Perform playback on the device. |
| | The sound output on the Bluetooth device may not be set to this unit. | Select this unit as the output device on the Bluetooth device. |
| | The connection to the Bluetooth device was cut off. | Connect with the Bluetooth device one more time. |
| | The unit may be too far away from the Bluetooth device. | Move the Bluetooth device near this unit. |

| PROBLEM/TROUBLE | POSSIBLE CAUSE | SOLUTION |
|---|--|--|
| | A device emitting electromagnetic waves (such as a microwave oven, a wireless device and so on) may be placed nearby. | Do not use this unit near device that emit electromagnetic waves. |
| There is no sound from sound bar - HDMI TV (ARC) Mode | Incorrect HDMI cable is used causing no signal to be sent to soundbar. Incorrect input mode is selected. | 1. Make sure that the user connected TV and sound bar by a 19-core HD ARC cable. 2. The sound bar and TV are connected through TV (ARC) port output; make sure that the TV is ARC compliant. 3. Set the TV to HDMI ARC (CEC). Set the audio output mode of TV to PCM format. (Or refer to your TV user manual) |
| There is no sound from sound bar (OPTICAL Mode) | OPTICAL cable might be damaged and no signal is received by the soundbar due to a failed connection and incorrect operation mode selected. | 1. Replace the OPTICAL cable with a new one to connect. 2. Set your TV audio output to PCM format. (Pls refer to your TV user manual) |
| There is no sound from sound bar (USB mode) | USB file type is not support & Sound bar doesn't switch to USB input mode automatically when USB is inserted. | Make sure that USB flash drive contains MP3 files because other file types are not supported. Switch the input mode once again, then playback again. |

ISO 9001:2015 Certified Company
www.zebronics.com

