

EN



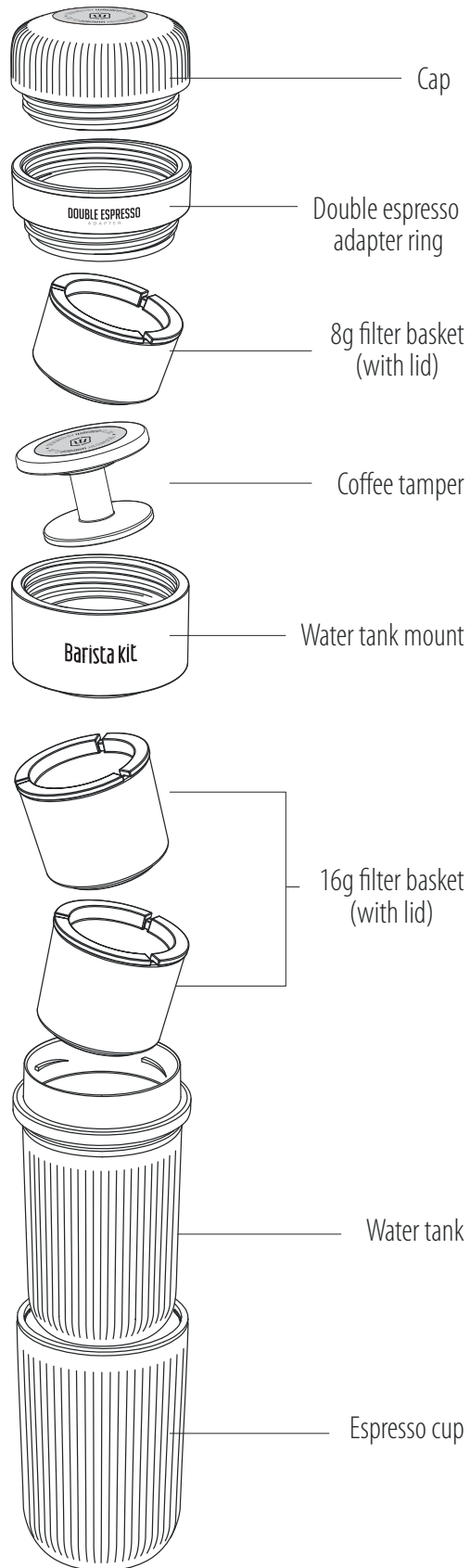
WACACO

nanopresso

BARISTA KIT

DESCRIPTION

EN



INSTRUCTIONS

EN



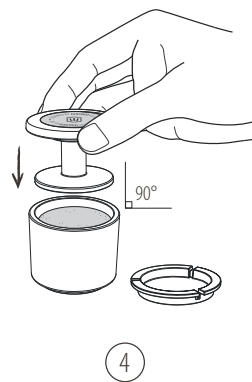
1
Unscrew the cap from the barista kit, and take out the double espresso adapter ring.



2
Unscrew the portafilter from the Nanopresso.



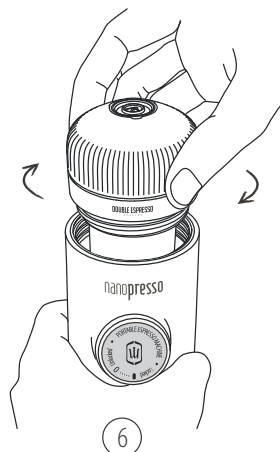
3
Screw the portafilter into the double espresso adapter ring.



4
Add the coffee grounds (16g) into the filter basket. Use the tamper to level and compress the espresso ground.

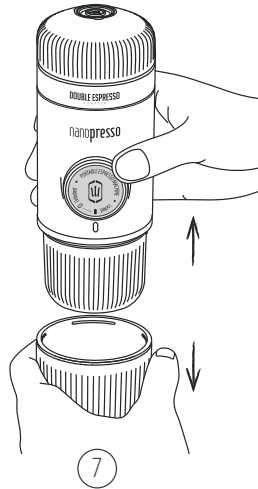


5
Put the filter basket filled with ground on the top of the main body.



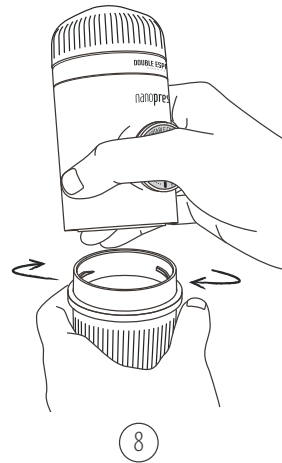
6
Screw back tightly the portafilter with adapter ring into the main body.

For step 7 to 10, you can use the water tank of your choice (small or large)



7

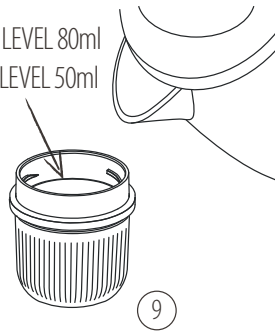
Unclips the cup if needed.
⚠ Do not unclip the cup if the water tank is filled with hot water.



8

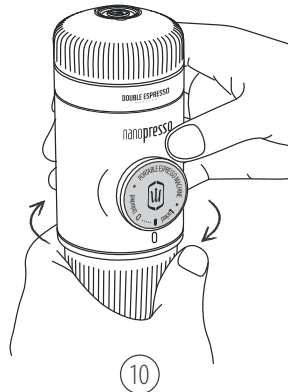
Unscrew the water tank.

MAX LEVEL 80ml
 MIN LEVEL 50ml



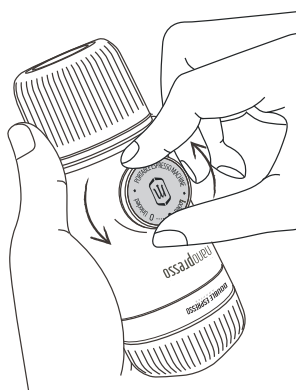
9

Add the boiling water into the water tank.
⚠ Place water tank on level and stable surface to fill it.



10

Screw tightly the main body onto the water tank.
⚠ Avoid burning yourself.



11

Unlock the piston from its travel position.



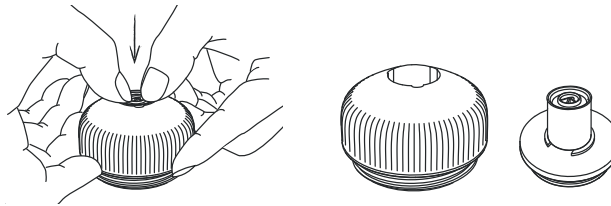
12

Hold the Nanopresso with two hands, as showed above. Start pumping above a cup. Pump slowly until all coffee come out.

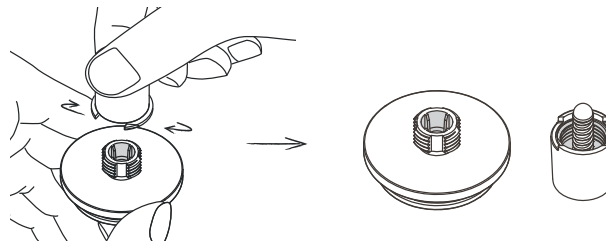
FOR BEST RESULTS

EN

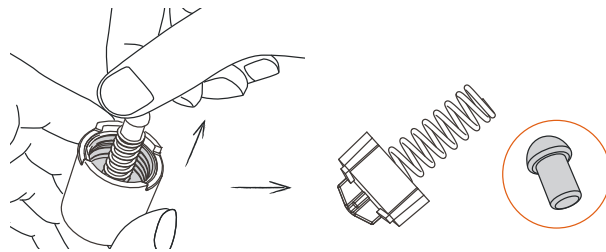
- Use the Nanopresso in non-pressurized mode as instructed below :



- ① Unclip the nozzle part.



- ② Unscrew the nozzle.



- ③ Remove the small black silicon part located inside the long spring. Reassemble the nozzle. **Take care to not lose that small black part.**

- In non-pressurized mode you may want to use little finer coffee grind.

NANOPRESSO+BARISTA KIT

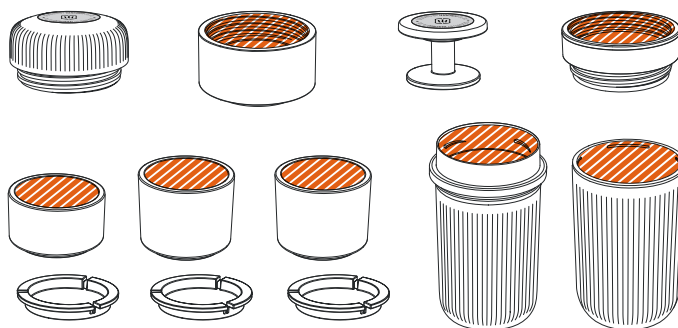
What to drink?

coffee menu	water tank (Maximum)	filter basket	in cup (Maximum)
Single Espresso	50ml	8gr.	30ml
Double Espresso	80ml	16gr.	60ml
Lungo	150ml	16gr.	120ml
2 Single Espresso	100ml	X2 8gr.	X2 30ml
2 Double Espresso	150ml	X2 16gr.	X2 55ml

CLEANING

EN

It's important to respect and clean regularly your machine and its accessories. A good maintenance will allow you to use your Nanopresso for many years. After each use clean the parts under running water. Let them dry separately.



⚠ WARNING ⚠

Do not put any Nanopresso Barista kit parts into dishwasher.

INTENDED USE

The Barista kit accessory is only compatible with the Nanopresso. The Barista kit is intended to a personal use. It is not suitable for commercial, professional, collective or industrial use.

Use of the Barista kit in any manner other than as directed herein could cause harm to persons and void the warranty. Wacaco Company Limited will not be responsible for injury or damage resulting from improper use.

WARRANTY

Wacaco Company Limited warrants the Barista kit against defects that are due to faulty materials or

workmanship for a period of 12 months from the date of purchase. This warranty is not transferable and does not entitle to compensation in cash. Wacaco Company Limited disclaims all responsibility for incidental or consequential damages caused by use of this appliance.

This warranty does not cover :

Damage resulting from improper use, abuse, neglect, commercial use or any other use of this appliance not found in this printed manual.

Damage of an aesthetic nature, damage due to corrosion or gradual deterioration.

Any disassembly or repairs done by unauthorized persons will void the warranty.

For any repair or exchange, the cost of return is at your expense. If your Barista kit fails within one year, please contact your Wacaco local distributor or support@wacaco.com directly for repair or exchange.