



www.kaff.in

KAFF

Appliances of Wellness



By Reader's digest

The Economic Times



KAFF



TOWNSVILLE (ISLAND) 90

- Advanced downdraft technology
- Black tempered front glass
- Stainless steel frame
- 4 Speed with LED sensor touch
- Aluminum filter
- Conveyor - PDCA
- Noise level 57 dBA (max)
- Double ball bearing system
- Designed max Airflow (upto): 1200 Nm³/h
- Size: 90 cm

C O O K E R H O O D S



TURIN BF DHC 90 (ISLAND)
(Metal housing + metal blower)
TURIN BF 120 (ISLAND) Conveyor-PDCA

- Front panel with black glass
- Stainless steel finish
- Touch control with digital display
- Baffle filter
- Both side operated
- Noise level 57 dBA (max)
- Double ball bearing system
- Designed max Airflow (upto): 1200 Nm³/h
- Size: 90/120 cm



MODENA DX (ISLAND) 90

- Front display panel with black glass insert
- Stainless steel finish
- Touch control with digital display
- Aluminum filter
- Conveyor - PDCA (Dual blower)
- Both side operated
- Noise level 62 dBA (max)
- Double ball bearing system
- Designed max Airflow (upto): 1200 Nm³/h
- Size: 90 cm



OPEC (ISLAND) DX 90

- Curved glass (8mm thick)
- Stainless steel finish
- Soft push control
- Aluminum filter
- Conveyor - PDCA
- Noise level 57 dBA (max)
- Designed max Airflow (upto): 1200 Nm³/h
- Size: 90 cm



FLORA TWIN DX (ISLAND) 120

- Unique twin cylinder design
- Stainless steel finish
- Soft push controls
- Stainless steel filter
- Conveyor - metallic
- Clear tempered glass
- Double ball bearing system
- Noise level 59 dBA + 59 dBA (max)
- Designed max Airflow (upto): 1000 Nm³/h + 1000 Nm³/h
- Size: 120 cm



VISTOSI DHC 90 (IS)

- Dry heat auto clean technology
- New artful design
- Backlit front glass with premium brushed aluminum finish
- Thermostatic touch control
- Energy saving frosted LED light
- Heavy duty baffle filters
- Optimal airborne grease control zone
- Noise level 68 dBA (max)
- Metal blower + Metal housing
- Designed max Airflow (upto): 1250 Nm³/h
- Size: 90 cm (ISLAND)



CANARY BF DHC 90 (IS)

- Dry heat auto clean technology
- Stainless steel finish with round edges
- Front panel with black glass
- Touch control with digital display
- Heavy duty baffle filters
- Both side operated
- Noise level 62 dBA (max)
- Double ball bearing system
- LED lights
- Designed max Airflow (upto): 1200 Nm³/h
- Size: 90 cm



DRY HEAT + FILTER-LESS TECHNOLOGY



FALMARC DHC 90 A (Automatic)
FALMARC DHC 90 S (Standard)

- Hassle free filter-less + Dry heat auto clean technology
- Unique designed with black tempered glass
- Thermostatic touch control panel with gesture motion
- Metal blower + Metal housing
- Long LED strip light
- S. steel oil collector
- Wider chamber entrance
- Automatic glass opening vent system
- With special noise reducer
- Double ball bearing system
- Noise level 68 dBA (max)
- Dual vent suction
- Designed max Airflow (upto): 1350 Nm³/h
- Size: 90 cm



RENMARK DHC 90

- Hassle free filter-less + Dry heat auto clean technology
- Front black glass
- Thermostatic touch control panel with gesture motion
- Long frosted LED light
- Decorative strip lighting
- Black glass on Hood
- Multi dimensional extraction system
- Cubical chamber entrance
- S. s oil collector
- Optimal airborne grease control zone
- Metal blower + Metal housing
- Noise level 62 dBA (max)
- Designed max airflow (upto) : 1250 Nm³/h
- Size: 90 cm



VIOLA DHC 90

- Hassle free filter-less + Dry heat auto clean technology
- Front black glass in premium copper and black finish
- Thermostatic touch control
- Frosted LED light
- S. s oil collector
- Optimal airborne grease control zone
- 4 Dimensional extraction system
- Metal blower + Metal housing
- Noise level 62 dBA (max)
- Designed max airflow (upto): 1250 Nm³/h
- Size: 90 cm



FALCON DHC 90

- Hassle free filter-less + Dry heat auto clean technology
- Powerful twin concealed motor
- Front black tempered glass
- Thermostatic touch control panel with gesture motion
- Frosted LED light
- Clock display
- Wider chamber entrance
- S. s oil collector
- Optimal airborne grease control zone
- Metal blower + Metal housing
- Automatic open glass panel
- Noise level 62 dBA (max)
- Designed max airflow (upto): 710 + 710 Nm³/h (1420)
- Size: 90 cm



ALBURY DHC 90

- Hassle free filter-less + Dry heat auto clean technology
- Powerful twin concealed motor
- Front black tempered glass
- Thermostatic touch control panel with gesture motion
- Frosted LED light
- Clock display
- Wider chamber entrance
- Black oil collector
- Optimal airborne grease control zone
- Metal blower + Metal housing
- Automatic open glass panel
- Noise level 62 dBA (max)
- Designed max Airflow (upto): 710+710 Nm³/h (1420)
- Size: 90 cm



NOBELO TX DHC 90

- Hassle free filter-less + Dry heat auto clean technology
- Powerful twin concealed motor
- Automatic open glass panel
- Black tempered glass
- Thermostatic touch control panel with gesture motion
- Frosted LED light
- Wider chamber entrance
- Large s.s oil collector
- Optimal airborne grease control zone
- Metal blower + Metal housing
- Noise level 62 dBA (max)
- Designed max Airflow (upto): 670+670 Nm³/h (1340)
- Size: 90 cm

C O O K E R H O O D S



ALBURY DHC 60

- Hassle free filter-less + Dry heat auto clean technology • Front black glass • Thermostatic touch control panel with gesture motion • Frosted LED light • Clock Display • Wider chamber entrance • Black oil collector • Optimal airborne grease control zone • Metal blower + Metal housing • Automatic open glass panel • Noise level 62 dBA (max) • Designed max Airflow (upto): 1280 Nm³/h • Size: 60 cm



LYRA DHC 60

- Hassle free filter-less + Dry heat auto clean technology • Black curved glass fascia with matt black hood • Thermostatic touch control panel with gesture motion • Frosted LED lights • Black finish oil collector • Optimal airborne grease control zone • Metal blower and metal housing • Hydraulic vent opening system • Noise level 57 dBA (max) • Designed max Airflow (up to): 1250 Nm³/h • Size: 60 cm



ROVER DHC 60

- Hassle Free Filter Less + Dry Heat Auto Clean Technology • Black Curved Glass Fascia with Premium Brushed Aluminium Finish • Thermostatic Touch Control Panel with 3 Speed Gesture Motion • Stainless Steel Oil Collector • Matt Black Finish • Black Curved Tempered Glass • Front Panel with Black Glass • Digital Display • Energy Saving Frosted LED Light • Metal Blower and Metal Housing • Designed Max Air flow (upto): 1180 Nm³/h • Noise Level: 58 dBA (max) • Size: 60cm



NOBELO TX DHC 60/75

- Hassle free filter-less + Dry heat auto clean technology • Black tempered glass • Thermostatic touch control panel with gesture motion • Fully concealed motor • Large s.s. oil collector • Wide chamber entrance • Optimal airborne grease control zone • Automatic open glass panel • Low maintenance • Metal blower + Metal housing • Noise level 62 dBA (max) • Designed max Airflow (upto): 1250 Nm³/h • Size: 60/75 cm



HAWK DHC 60

- Hassle free filter-less + Dry heat auto clean technology • Slide open glass panel • Front black tempered glass with black matt finish • Thermostatic touch control panel with gesture motion • Frosted LED light • Powerful concealed copper motor • Wider chamber entrance • Black finish oil collector • Metal blower + Metal housing • Air outlet: 160 mm • Noise level: 62 dBA (max) • Designed max Airflow (upto): 1180 Nm³/h • Size: 60 cm



VASCO DHC 60

Hassle free Filter Less and Dry Heat Clean Technology • Thermostatic Touch Control Panel with 3 Speed Gesture Motion • Matt Black Finish • Black Metal Oil Collector • Motor with Copper Winding • Black Glass Clad Hood with LED Insignia • Front Panel with Black Glass • Energy Saving LED Light • Metal Blower + Metal Housing • Designed Air Flow (max): 1250 Nm³/h • Noise Level: 58 dBA (max) • Size: 60 cm



TORNADO DHC 90

- Hassle free filter-less + Dry heat auto clean technology • Front touch glass panel with clock • Stainless steel finish • Touch controls • Stainless steel oil collector • Wider chamber entrance • Metal housing • With noise reducer • Noise level 68 dBA (max) • Low maintenance • Designed max Airflow (upto): 1350 Nm³/h • Size: 90 cm



STELLA DHC 90 SS (Stainless Steel finish)

STELLA DHC 90 BS (Black Steel finish)

- Hassle free filter-less + Dry heat auto clean technology • Front black glass panel • Black curved tempered glass • Thermostatic touch control panel with gesture motion • Energy saving frosted LED light • Clock display • Multi-dimensional extraction system • S.s oil collector • Metal blower and metal housing • Noise level 62 dBA (max) • Designed max Airflow (up to): 1180 Nm³/h • Size: 90 cm



CASTO DX DHC 60

- Hassle free Filter Less and Dry Heat Clean Technology • Thermostatic Touch Control Panel with 3 Speed Gesture Motion • Matt Black Finish • Black Metal Oil Collector • Motor with Copper Winding • Black Glass Clad Hood with LED Insignia • Front Panel with Black Glass • Energy Saving LED Light • Metal Blower + Metal Housing • Designed Air Flow (max): 1250 Nm³/h • Noise Level: 62 dBA (max) • Size: 60 cm

DRY HEAT TECHNOLOGY



VISTOSI DHC 60/90

- Dry heat auto clean technology • New artful design • Backlit front glass with premium brushed aluminium finish • Thermostatic touch control • Energy saving frosted LED light • Heavy duty baffle filters • Optimal airborne grease control zone • Metal blower + Metal housing • Noise level 68 dBA (max) • Designed max Airflow (upto): 1250 Nm³/h • Size: 60/90 cm



CANARY BF DHC 90

- Dry heat auto clean technology • Stainless steel finish with round edges • Front panel with black glass • Touch control with digital display • Heavy duty baffle filters • Metal blower + Metal housing • Noise level 62 dBA (max) • Double ball bearing system • LED Lights • Designed max Airflow (upto): 1200 Nm³/h • Size: 90 cm



VERTU DHC 90

- Dry heat auto clean technology • Dark grey curved tempered glass • Matt black finish • Front panel with black glass • Touch control panel with digital display • Long LED light • 3 Wider stainless steel filter • Noise level 62 dBA (max) • Designed max Airflow (upto): 1180 Nm³/h • Size: 90 cm

DRY HEAT TECHNOLOGY



LATINO DHC 70/90

- Dry heat auto clean technology • Matt black finish • Smoke black curved tempered glass
- Frosted LED lights • Dial knob control • Baffle filter • Noise level 62 dBA (max) • Designed max Airflow (upto): 1180 Nm³/h • Size : 70/90 cm



LUMEX DHC 60/90

- Dry heat auto clean technology • Front panel with black glass • Touch control panel with digital display • LED light • Heavy duty baffle filter • Stainless steel oil collector
- Noise level 68 dBA (max) • Designed max Airflow (upto): 1200 Nm³/h • Size: 60/90cm



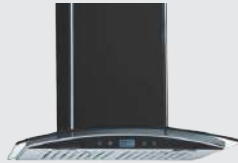
VITO DHC 60

- Dry heat auto clean technology • Heavy duty baffle filter • Thermostatic touch control panel with 3 speed gesture motion • Stainless steel oil collector • Motor with copper winding • Black glass clad hood with LED insignia • Front panel with black glass • Energy saving LED light • Metal blower + Metal housing • Designed max Airflow (upto): 1180 Nm³/h • Noise level : 62 dBA (max) • Size : 60 cm



SIGMA DHC 60

- Dry heat auto clean technology • Heavy duty baffle filter • Matt black finish • Thermostatic touch control panel with 3 speed gesture motion • Stainless steel oil collector • Black curved tempered glass • Front panel with black glass • Digital display • Energy saving LED light • Designed max Airflow (upto): 1250 Nm³/h • Air outlet : 150 mm • Noise level : 58 dBA (max) • Size : 60 cm



OPEC TX DHC 60/70/90

- Dry heat auto clean technology • Matt black finish • Front panel with black glass • Touch controls with digital display • LED light • Heavy duty baffle filter • Oil collector • Noise level 58 dBA (max) • Curved tempered glass • Designed max Airflow (upto): 1180 Nm³/h • Size : 60/70/90 cm



PRIMA TX DHC 60/75/90

- Dry heat auto clean technology • Matt black finish • Curved tempered glass • Front panel with black glass • Thermostatic touch control panel with 3 speed gesture motion • LED light • Heavy duty baffle filter • Stainless steel oil collector • Noise level 62 dBA (max) • Designed max Airflow (upto): 1180 Nm³/h • Size : 60/75/90 cm



ASTRA TX DHC 60

- Dry heat auto clean technology • Front panel with black glass • Touch controls • Frosted LED light • Heavy duty baffle filter • Noise level 62 dBA (max) • Designed max Airflow (upto): 1180 Nm³/h • Size : 60 cm



MAURICE BF DHC 60 BLK

- Dry heat auto clean technology • Matt black finish with black glass front • Dial knob control (electronic) • Frosted LED lights • Oil Collector • Heavy duty baffle filter • Noise level 62 dBA (max) • Designed max Airflow (upto): 1180 Nm³/h • Size : 60 cm



ZEPA GX DHC 60

- Dry heat auto clean technology • Black tempered glass • Matt black finish • Touch controls • Frosted LED lights • Dual Aluminium filter • Metal blower and metal housing • Noise level 57 dBA (max) • Designed max airflow (upto): 1180 Nm³/h • Size : 60 cm



BEVERLY DHC 60

- Dry heat auto clean technology • Matt black finish • Front panel with black glass • Unique louvered design glass panel • Touch controls • LED lights • Oil Collector • Aluminium filter • Noise level 62 dBA (max) • Designed max Airflow (upto): 1180 Nm³/h • Size : 60 cm



AMBRA DHC SS/BLK 60/75

- Dry heat auto clean technology • Matt black finish • Front panel with black glass • Curved tempered glass • Touch controls with digital display • Frosted LED light • Oil collector • Conical stainless steel filter • Noise level 59 dBA (max) • Designed max Airflow (upto): 1180 Nm³/h • Size: 60/75 cm



EDEN DHC 60

- Dry heat auto clean technology • Matt black finish • Front panel with black glass • 3 speed touch control • Frosted LED light • Oil collector • Conical stainless steel filter • Noise level 62 dBA (max) • Designed max Airflow (upto): 1180 Nm³/h • Size : 60 cm



REL DHC 60

- Dry heat auto clean technology • Heavy duty baffle filter • Black curved tempered glass • Matt black finish • Soft push control • Energy saving square LED light • Noise level : 57 dBA (max) • Designed max Airflow (upto): 1180 Nm³/h • Air outlet: 150 mm • Size: 60 cm



LIZ DHC 60/90

- Dry Heat Auto Clean technology • Metal Blower and Metal Housing • Matt Black Rust Free Coating • Black curved tempered glass • Touch control with digital display • Energy saving round LED lights • Heavy duty SS baffle filter • Designed Max Airflow (Upto): 1150 Nm³/h (60cm), 1250 Nm³/h (90cm) • Size : 60/90cm



ESTAL DHC 75 Black/Grey

- Dry heat auto clean technology • Stainless steel front panel • With black/gray glass on side panel • Soft push control • LED light • Stainless steel oil collector • Double ball bearing system • Noise level 62 dBA (max) • Designed max Airflow (upto): 1180 Nm³/h • Size : 75 cm



ELBAA BF DHC 60 SS
ELBAA BF DHC 60 BL

- Dry heat auto clean technology • Stainless steel finish / black finish • Soft push controls
- Normal light • Heavy duty baffle filters
- Noise level 62 dBA (max) • Designed max Airflow (upto): 1080 Nm³/h • Size: 60 cm

FILTER-LESS TECHNOLOGY



HAVANA 90

- Hassle free filter-less technology • Black tempered glass • Touch control with digital display • Large s. s oil collector • Wider chamber entrance • Fully concealed motor • Optimal airborne grease control zone • Low maintenance • Slide open glass panel • Noise level 68 dBA (max) • Designed max Airflow (upto): 1250 Nm³/h • Size: 90 cm



CANNBERA 90

- Hassle free filter-less technology • Black tempered glass • Touch control panel with digital display • Fully concealed motor • Low maintenance • Large s. s oil collector • Wider chamber entrance • Optimal airborne grease control zone • Automatic open glass panel • Noise level 68 dBA (max) • Designed max Airflow (upto): 1300 Nm³/h • Size: 90 cm



TORINO 90

- Hassle free filter-less technology • Stainless steel finish with black glass • Touch control • Curved top/front extraction • Fully concealed motor • Low maintenance • Large s. s oil collector • Wider chamber entrance • Noise level 68 dBA (max) • LED lights • Designed max Airflow (upto): 1200 Nm³/h • Size: 90 cm



CELINO 90

- Hassle free filter-less technology • Black tempered glass with stainless steel finish • Touch control • Fully concealed motor • Low maintenance • Optimal airborne grease control zone • Unique design for enhanced airflow • Automatic open black glass panel on top • Noise level 68 dBA (max) • Designed max Airflow (upto): 1300 Nm³/h • Size: 90 cm



MARBELLA 90 WHITE

- Hassle free filter-less technology • White tempered glass • Touch control panel with digital display • Fully concealed motor • Low maintenance • Large s. s oil collector • Wider chamber entrance • Optimal airborne grease control zone • Automatic open glass panel • Noise level 68 dBA (max) • Designed max Airflow (upto): 1250 Nm³/h • Size: 90 cm



MARBELLA 60 BLACK

- Hassle free filter-less technology • Black tempered glass • Touch control panel with digital display • Fully concealed motor • Low maintenance • Large s. s oil collector • Wider chamber entrance • Optimal airborne grease control zone • Automatic open glass panel • Noise level 68 dBA (max) • Designed max Airflow (upto): 1250 Nm³/h • Size: 60 cm



FORMA DX 60/75

- Hassle free filter-less technology • Stainless steel finish • Front panel with black glass • Soft push controls • Fully concealed motor • Large s. s oil collector • Low maintenance • Noise level 68 dBA (max) • LED lights • Designed max Airflow (upto): 1150 Nm³/h • Size: 60/75 cm



HOOVER 90

- Hassle free filter-less technology • Robust stainless steel low maintenance body • Black glass panel with 'O' touch control • Frosted LED lights • Wider chamber entrance with s.s oil collector • Optimal airborne grease control zone • Futuristic design for max extraction • Metal blower + Metal housing • Noise level 62 dBA (max) • Designed max Airflow (upto): 1350 Nm³/h • Size: 90 cm

COOKER HOODS



OPEC BGX 60

- Matt black finish • Touch control panel with digital display • Aluminum / Baffle filter • Front panel with black glass • Curved tempered glass (8 mm thick) • Noise level 62 dBA (max) • Energy Saving Frosted LED Lights • Designed max Airflow (upto): 1180 Nm³/h • Size: 60 cm



OPEC MX 60/70

- Stainless steel finish • Soft push control • Curved tempered glass (8mm thick) • Aluminum filter • Frosted LED Lights • Noise level 57 dBA (max) • Designed max Airflow (upto): 1180 Nm³/h • Size: 60/70 cm



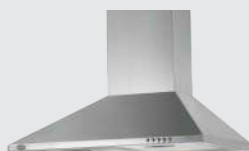
FAB BF 60

- Heavy duty baffle filter • Matt black rust free coating • Soft push control • Black curved tempered glass • Energy saving LED light • Air outlet: 150 mm • Noise level: 54 dBA (max) • Designed max Airflow (upto): 1150 Nm³/h • Size: 60 cm



FIM BF MX 60 SS

- Stainless steel finish • Soft push controls • Curved tempered glass • Front panel black glass • Frosted LED light • Heavy duty baffle filters • Noise level 57 dBA (max) • Designed max Airflow (upto): 1080 Nm³/h • Size: 60 cm



BASELX60 (SS finish)
BASELX60BL (Black finish)

- Stainless steel/black finish • Soft push control • Normal light • Aluminum filter • Noise level 59 dBA (max) • Designed max Airflow (upto): 700 Nm³/h • Size: 60 cm



META 60

- Stainless steel finish • Push control • Normal lamp • Aluminum filter • Noise level 62 dBA (max) • Designed max Airflow (upto): 925 Nm³/h • Size: 60 cm

C O O K E R H O O D S



MEL BF 60

- Heavy Duty Baffle Filter • Matt Black Rust Free Coating • Soft push control • Energy Saving LED Light • Motor with copper winding • Air flow - 1025 Nm³/h Air Outlet : 150 mm • Noise Level : 62 dBA (max) • Size : 60cm



RAY 60

- S. steel finish with black front panel • Push controls • Normal light • Aluminum filter • Noise level 62 dBA (max) • Designed max Airflow (upto): 1000 Nm³/h • Size: 60 cm



FEMA BF 60 SS/ BLK

- Stainless steel finish • Soft push controls • Built-in front with black glass panel • Normal light • Heavy duty baffle filters • Noise level 59 dBA (max) • Designed max Airflow (upto): 1180 Nm³/h • Size : 60 cm



NOVA TC 60

- Full Black Tempered Glass Finish • Touch Controls • Energy Saving LED Light • Aluminium Filter • Noise Level : 59 dBA(max) • Designed Max Airflow - 1080 Nm³/h • Size : 60 cm



NOVA SV 60

- Full Black Tempered Glass Finish • Matt black rust free coating • 'O' Touch Control with LED display • Timer function Energy Saving Frosted LED Light • Aluminium Filter • Noise Level : 60 dBA(max) • Designed Max Airflow - 1000 Nm³/h • Size : 60 cm



JIFF 60

- Full Black Tempered Glass Finish • Unique louvered design 3 glass panel • Matt black rust free coating • Push Button Control Energy Saving Frosted LED Light • Aluminium Filter • Noise Level : 60 dBA(max) • Designed Max Airflow - 1000 Nm³/h • Size : 60 cm



MARK MX 60/70 (BLACK)

- Stainless steel finish and matt black finish • Soft push controls • Normal light • Aluminum filter • Noise level 62 dBA (max) • Designed max Airflow (upto): 1000 Nm³/h • Size: 60/70 cm



CRUZE 60

- Built-in • Matt black finish with stainless steel front • Rocker control • LED light • Aluminum filter • Built-in telescopic hood • Space saving pull out system • Noise level 62 dBA (max) • Designed max Airflow (upto): 1180 Nm³/h • Size : 60 cm



EXPO MX 60

- Black finish • Push controls • Normal light • Aluminum filter • Noise level 56 dBA (max) • Designed max Airflow (upto): 500 Nm³/h • Size : 60 cm



THEME MX 60

- Stainless steel finish • Push controls • Normal light • Aluminum filter • Noise level 56 dBA (max) • Designed max Airflow (upto): 500 Nm³/h • Size : 60 cm

SILENCER



- Noise reducer
- Suitable for 150 mm dia
- **Dimension:** 200 mm (w) x 600 mm(h)

LOUVRE FOR EXTERIOR USE



FC100B (Size:4")

FC150B (Size:6")



FC 100A (Size: 4")

FC 150A (Size: 6")

ABS material • Suitable for outdoor off-white finish

KAFF



SERIES
Massimo

B U I L T - I N H O B S



MSM 104

- 4 full brass high efficiency burners with FFD
- 1 big triple ring burner, 1 mini triple ring burner, 2 dual ring burners • 8 mm thick premium frosted black glass • With decorative SS moulded strip on all sides for edge protection • Brass flame spreader + brass burner caps coated in black with embossed insignia • Heavy duty cast iron pan support with integrated flame protector for better performance • Ergonomic designer metal knobs • Flame failure device • Size: 100 cm



MSM 783

- 3 full brass high efficiency burners with FFD
- 1 big triple ring burner, 1 mini triple ring burner, 1 dual ring burners • 8 mm thick premium frosted black glass • With decorative SS moulded strip on all sides for edge protection • Brass flame spreader + brass burner caps coated in black with embossed insignia • Heavy duty cast iron pan support with integrated flame protector for better performance • Ergonomic designer metal knobs • Flame Failure Device • Size: 78 cm



MSM 804

- 4 full brass high efficiency burners with FFD
- 1 big triple ring burner, 1 mini triple ring burner, 2 dual ring burners • 8 mm thick premium frosted black glass • With decorative SS moulded strip on all sides for edge protection • Brass flame spreader + brass burner caps coated in black with embossed insignia • Heavy duty cast iron pan support with integrated flame protector for better performance • Ergonomic designer metal knobs • Flame failure device • Size: 80 cm



MSM 604

- 4 full brass high efficiency burners with FFD
- 1 big triple ring burner, 1 mini triple ring burner, 2 dual ring burners • 8 mm thick premium frosted black glass • With decorative SS moulded strip on all sides for edge protection • Brass flame spreader + brass burner caps coated in black with embossed insignia • Heavy duty cast iron pan support with integrated flame protector for better performance • Ergonomic designer metal knobs • Flame failure device • Size: 60 cm

SERIES
Bellini

B U I L T - I N H O B S



BLHF 100 (WHITE) Full FFD
BLH 100 (WHITE) FFD

- 4 full brass high efficiency burners
- 1 big triple ring burner with FFD, 1 mini triple ring burner, 2 dual ring burner • 8 mm thick white tempered glass • Flame failure device • Heavy duty cast iron pan support customised for Indian cooking • With decorative SS moulded strip on all sides for edge protection • Ergonomic designer metal knob (award winning design) • Size: 100 cm



BLHF 100 (BLACK) Full FFD
BLH 100 (BLACK) FFD

- 4 full brass high efficiency burners
- 1 big triple ring burner with FFD, 1 mini triple ring burner, 2 dual ring burner • 8 mm thick black tempered glass • Flame failure device • Heavy duty cast iron pan support customised for Indian cooking • With decorative SS moulded strip on all sides for edge protection • Ergonomic designer metal knob (award winning design) • Size: 100 cm



BLHF 865(Full FFD)
BLH 865(FFD)

- 5 full brass high efficiency burners
- 1 big triple ring burner with FFD, 2 mini triple ring burner, 2 dual ring burner • 8 mm thick black tempered glass • Flame failure device • Heavy duty cast iron pan support customised for Indian cooking • With decorative SS moulded strip on all sides for edge protection • Ergonomic designer metal knob (award winning design) • Size: 86 cm

SERIES
Bellini

B U I L T - I N H O B S



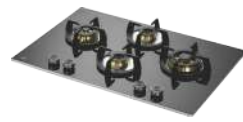
BLH 804 (WHITE)

- 4 full brass high efficiency burners
- 1 big triple ring burner with FFD, 1 mini triple ring burner, 2 dual ring burner • 8 mm thick white tempered glass • Flame failure device
- Heavy duty cast iron pan support customised for Indian cooking • With decorative SS moulded strip on all sides for edge protection • Ergonomic designer metal knob (award winning design) • Size: 80 cm



BLHF 804 (BLACK) (Full FFD)
BLH 804 (BLACK)

- 4 full brass high efficiency burners
- 1 big triple ring burner with FFD, 1 mini triple ring burner, 2 dual ring burner • 8 mm thick black tempered glass • Flame failure device • Heavy duty cast iron pan support customised for Indian cooking • With decorative SS moulded strip on all sides for edge protection • Ergonomic designer metal knob (award winning design) • Size: 80 cm



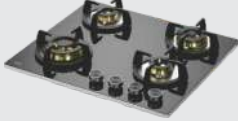
BLH 784

- 4 full brass high efficiency burners
- 1 big triple ring burner with FFD, 1 mini triple ring burner, 2 dual ring burner • 8 mm thick black tempered glass • Flame failure device • Heavy duty cast iron pan support customised for Indian cooking • With decorative SS moulded strip on all sides for edge protection • Ergonomic designer metal knob (award winning design) • Size: 78 cm



BLHF 783 (Full FFD)
BLH 783 (FFD)

- 3 full brass high efficiency burners
- 1 big triple ring burner with FFD, 1 mini triple ring burner, 1 dual ring burner • 8 mm thick black tempered glass • Flame failure device • Heavy duty cast iron pan support customised for Indian cooking • With decorative SS moulded strip on all sides for edge protection • Ergonomic designer metal knob (award winning design) • Size: 78 cm



BLHF 604 (Full FFD)
BLH 604 (FFD)

- 4 full Brass High efficiency burner
- 1 big triple ring with FFD, 1 mini triple ring and 2 dual flame burner • 8 mm thick black tempered glass • Flame failure device • Heavy duty cast iron pan support customised for Indian cooking • With decorative SS moulded strip on all sides for edge protection • Ergonomic designer metal knob (award winning design) • Size: 60 cm



BLHF 603 (Full FFD)
BLH 603 (FFD)

- 3 full Brass High efficiency burners
- 1 big triple ring with FFD, 1 mini triple ring, 1 dual ring burner • 8 mm thick black tempered glass • Flame failure device • Heavy duty cast iron pan support customised for Indian cooking • With decorative SS moulded strip on all sides for edge protection • Ergonomic designer metal knob (award winning design) • Size: 60 cm

BLH 302



- 2 full Brass High efficiency burners • 1 mini triple ring with FFD and 1 dual ring burner • 8 mm thick black tempered glass • Flame failure device • Heavy duty cast iron pan support customised for Indian cooking • With decorative SS moulded strip on all sides for edge protection • Ergonomic designer metal knob (award winning design) • Size: 30 cm

Series
NOVARA

B U I L T - I N H O B S



NVH 804

- New design –high efficiency 4 full brass burners • 1 big triple ring burner with FFD, 1 mini triple ring burner, 2 dual ring burner • Black tempered glass with unique dotted design • Heavy duty cast iron pan support customized for Indian cooking • 8mm thick black tempered glass with beveled edges • Brass flame spreader + Brass burner caps coated in black • Drip tray (Black matt coating)
- With legs • Auto electric ignition • Designer metal knobs • Size: 80 cm



NVH 783

- New design –high efficiency 3 full brass burners • 1 big triple ring burner with FFD, 1 mini triple ring burner, 1 dual ring burner • Black tempered glass with unique dotted design • Heavy duty cast iron pan support customized for Indian cooking • 8 mm thick black tempered glass with beveled edges • Brass flame spreader + Brass burner caps coated in black • Drip tray (Black matt coating)
- With legs • Auto electric ignition • Designer metal knobs • Size: 78 cm



NVH 604

- New design –high efficiency 4 full brass burners • 1 big triple ring burner with FFD, 1 mini triple ring burner, 2 dual ring burner • Black tempered glass with unique dotted design • Heavy duty cast iron pan support customized for Indian cooking • 8 mm thick black tempered glass with beveled edges • Brass flame spreader + Brass burner caps coated in black • Drip tray (Black matt coating) • With legs • Auto electric ignition • Designer metal knobs • Size: 60 cm



NVH 603

- New design – high efficiency 3 full brass burners • 1 big triple ring burner with FFD, 1 mini triple ring burner, 1 dual ring burner • Black tempered glass with unique dotted design • Heavy duty cast iron pan support customized for Indian cooking • 8 mm thick black tempered glass with beveled edges • Brass flame spreader + Brass burner caps coated in black • Drip tray (Black matt coating) • With legs • Auto electric ignition • Designer metal knobs • Size: 60 cm



MFBX 764

- 4 burners Hob • Full brass burners • 1 big triple ring burner with FFD, 1 small triple ring burner, 1 dual ring burner, 1 mini dual ring burner • 8 mm thick black tempered glass with beveled edges • Brass flame spreader + brass burner caps coated in black • Heavy duty cast iron pan support customized for Indian cooking • With legs • Square drip tray (black shiny finish) • Auto electric ignition • Front control with designer metal knobs (in black) • Size: 76 cm



MFBX 604

- 4 burners Hob • Full brass burners • 1 big triple ring burner with FFD, 1 small triple ring burner, 1 dual ring burner, 1 mini dual ring burner • 8 mm thick black tempered glass with beveled edges • Brass flame spreader + brass burner caps coated in black • Heavy duty cast iron pan support customized for Indian cooking • With legs • Square drip tray (black shiny finish) • Auto electric ignition • Front control with designer metal knobs (in black) • Size: 60 cm



MFBX 763

- 3 burners Hob • Full brass burners • 1 big triple ring burner with FFD, 1 small triple ring burner, 1 mini dual ring burner • 8mm thick black tempered glass with beveled edges • Brass flame spreader + brass burner caps coated in black • Heavy duty cast iron pan support customized for Indian cooking • With legs • Square drip tray (black shiny finish) • Auto electric ignition • Front control with designer metal knobs (in black) • Size: 76 cm



MFBX 603

- 3 burners Hob • Full brass burners • 1 big triple ring burner with FFD, 1 small triple ring burner, 1 mini ring burner • 8 mm thick black tempered glass with beveled edges • Brass flame spreader + brass burner caps coated in black • Heavy duty cast iron pan support customized for India cooking • With legs • Square drip tray (black shiny finish) • Auto electric ignition • Front control with designer metal knobs (in black) • Size: 60 cm



FBB 604

- 4 powerful full brass burners with 2 triple ring and 2 dual ring burners • Beveled black tempered glass • Metal knobs • Stainless steel drip tray • Size: 60 cm



KHNY 77 2TR

- Black tempered glass (8mm thick)
- 4 gas burner with 2 triple ring burner
- Auto electric ignition • Diamond cut tapered front • 8 mm thick beveled edges glass • Heavy duty cast iron pan support • Easy grip knobs • Size: 77 cm



KH 78 BR 47

- Powerful 4 brass burners with 1 triple ring and 2 dual ring and 1 mini triple ring burner
- Black tempered glass (8 mm thick)
- Metal knobs • Auto electric ignition • Diamond cut tapered front • Heavy duty cast iron pan support • Stainless steel drip tray • Size: 78 cm



FBB 603

- 3 powerful full brass burners with 1 triple ring and 2 dual ring burner • Beveled black tempered glass • Metal knobs • Stainless steel drip tray • Size: 60 cm



KH 100 4BG

- Powerful 4 brass burners • 2 triple ring and 2 dual ring burner • Black tempered glass (8 mm thick) • Metal knobs • Auto electric ignition • Diamond cut tapered front • Heavy duty cast iron pan support • Stainless steel drip tray • Size: 100 cm



KHB 60 BR 4

- Powerful 4 brass burners with 1 triple ring, 1 mini triple ring and 2 dual ring burner
- Black tempered glass (8mm thick)
- Metal knobs • Auto-electric ignition • Diamond cut tapered front • Heavy duty cast iron pan support • Stainless steel drip tray • Size: 60 cm



KHNY 90 2TR

- Black tempered glass (8mm thick) • 5 gas burner with 2 triple ring burner • Auto electric ignition • Diamond cut tapered front • 8 mm thick beveled edges glass • Heavy duty cast iron pan support • Easy grip knobs • Size: 90 cm



KH 86 BR 53

- Powerful 5 brass burners with 1 triple ring burner, 3 dual ring burner, 1 mini triple ring burner • Black tempered glass (8 mm thick) • Metal knobs • Auto electric ignition • Diamond cut tapered front • Heavy duty cast iron pan support • Stainless steel drip tray • Size: 86 cm



KH 60 BR 31

- Powerful 3 brass burners with 1 triple ring and 1 dual ring and 1 mini triple ring burners
- Black tempered glass (8 mm thick)
- Metal knobs • Auto electric ignition • Diamond cut tapered front • Heavy duty cast iron pan support • Stainless steel drip tray • Size: 60 cm

B U I L T - I N H O B S



KPH 783 B

- 3 brass burners with 2 triple ring burner and 1 dual ring burner • Black tempered glass (8 mm thick) • Auto Electric ignition • Enamelled matt finish pan support • Stainless steel dip plate • Metal knobs • Size: 78 cm



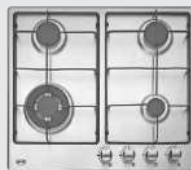
NE 4B 60 GF

- 4 burner with 1 triple ring, 2 dual ring and 1 mini dual ring burner • Black tempered glass (8 mm thick) • Auto electric ignition • Enamelled matt finish pan support • Easy grip knobs • Size : 60 cm



KSN BR 460

- Powerful 4 brass burners with 1 triple ring and 2 dual ring and 1 normal ring burner • Stainless steel finish (304 grade) • Metal knobs • Auto electric ignition • Heavy duty cast iron pan support • Size: 60 cm



NE 4B 60 SS

- 4 burner with 1 triple ring, 2 dual ring and 1 mini dual ring burner • Stainless steel finish (304 grade) • Auto electric ignition • Enamelled matt finish pan support • Easy grip knobs • Size : 60 cm

SERIES Veneto

B U I L T - I N H O B S



VHB 764

- 4 brass burners with 1 big triple ring burner, 1 mini triple ring burner, 1 big dual ring burner, 1 mini dual ring burner • Auto ignition • Stainless steel drip tray • Ergonomic metal knob • Heavy duty cast iron pan support • 8 mm thick black tempered glass with bevelled edges • Burners coated in black • Size: 76 cm



VHB 604

- 4 brass burners with 1 big triple ring burner, 1 mini triple ring burner, 1 big dual ring burner, 1 mini dual ring burner • Auto ignition • Stainless steel drip tray • Ergonomic metal knob • Heavy duty cast iron pan support • 8 mm thick black tempered glass with bevelled edges • Burners coated in black • Size: 60 cm



VHB 763

- 3 brass burners with 1 big triple ring burner, 1 mini triple ring burner, 1 dual ring burner • Auto ignition • Stainless steel drip tray • Ergonomic metal knob • Heavy duty cast iron pan support • 8 mm thick black tempered glass with bevelled edges • Burners coated in black • Size: 76cm



VHB 603

- 3 brass burners with 1 big triple ring burner, 1 mini triple ring burner, 1 ring burner • Auto ignition • Stainless steel drip tray • Ergonomic metal knob • Heavy duty cast iron pan support • 8 mm thick black tempered glass with bevelled edges • Burners coated in black • Size: 60cm

SERIES Versa

B U I L T - I N H O B S



VRH 604

- 4 brass burners with 2 triple ring burner, 2 dual ring burner • Auto ignition • Stainless steel drip tray • Metal knob • Matt enameled pan support • 8 mm thick black tempered glass with bevelled edges • Burners coated in black • Size: 60 cm



VRH 603

- 3 brass burners with 1 big triple ring burner, 2 dual ring burner • Auto ignition • Stainless steel drip tray • Metal knob • Matt enameled pan support • 8 mm thick black tempered glass with bevelled edges • Burners coated in black • Size: 60 cm

SERIES
Versa

B U I L T - I N H O B S



VRH 784

- 4 Brass Burners with 2 Triple Ring Burner, 2 Dual Ring Burner • Auto Ignition • Stainless Steel Drip Tray • Metal Knob • Matt Enameled Pan Support • 8mm Thick Black Tempered Glass with Beveled Edges • Burners Coated in Black • Size: 78 cm



VRH 783

- 3 Brass Burners With 2 Triple Ring Burner, 1 Dual Ring Burner • Auto Ignition • Stainless Steel Drip Tray • Metal Knob • Matt Enameled Pan Support • 8mm Thick Black Tempered Glass with Beveled Edges • Burners Coated in Black • Size: 78 cm

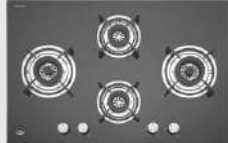
SERIES
HBR

B U I L T - I N H O B S



HBR 804 A

- 4 brass burners with 2 triple ring and 2 dual ring burner • Black tempered glass (8 mm thick) • Auto electric ignition • Enamelled matt finish pan support • Metal knobs • Stainless steel drip tray • Size: 80 cm



HBR 784C

- 4 brass burners with 2 triple ring and 2 dual ring burner • Black tempered glass (8 mm thick) • Auto electric ignition • Enamelled matt finish pan support • Metal knobs • Stainless steel drip tray • Size: 78 cm



HBR 783B

- 3 brass burners with 2 triple ring and 1 dual ring burner • Black tempered glass (8 mm thick) • Auto electric ignition • Enamelled matt finish pan support • Metal knobs • Stainless steel drip tray • Size: 78 cm



HBR 604A

- 4 brass burners with 1 triple ring and 3 dual ring burner • Black tempered glass (8 mm thick) • Auto electric ignition • Enamelled matt finish pan support • Metal knobs • Stainless steel drip tray • Size: 60 cm



HBR 603B

- 3 brass burners with 1 triple ring, 2 dual ring burners • Black tempered glass (8 mm thick) • Auto electric ignition • Stainless steel dip tray • Enamelled matt finish pan support • Metal knobs • Size: 60 cm

SERIES
Crista

B U I L T - I N H O B S



CRH 783

- Black coated tornado style burners • 2 triple ring burner, 1 dual ring burner • Auto ignition • Stainless steel drip tray • Metal knobs • Matt enameled pan support • 8 mm thick black tempered glass • Size: 78 cm



CRH 604

- Black coated tornado style burners • 1 triple ring burner, 3 dual ring burner • Auto ignition • Stainless steel drip tray • Metal knobs • Matt enameled pan support • 8 mm thick black tempered glass • Size: 60 cm



CRH 603

- Black coated tornado style burners • 1 triple ring burner, 2 dual ring burner • Auto ignition • Stainless steel drip tray • Metal knobs • Matt enameled pan support • 8 mm thick black tempered glass • Size: 60 cm



CRH 804

- Black coated tornado style burners • 2 triple ring burner, 2 dual ring burner • Auto ignition • Stainless steel drip tray • Metal knobs • Matt enameled pan support • 8 mm thick black tempered glass • Size: 80 cm

BUILT-IN INDUCTION HOBS



IND 32

- 2 ZONE (FLEXI ZONE) Induction Hob • Flexzone technology • Schott glass • Power boost • Bar-be-que function • Timer (min): 99 • Power levels: 9 • LED display • Auto switch off safety • Temperature limiter • Automatic pan detection • Spillage protection • Overheat detection • Smart touch control panel • Residual heat indicator • Timer control • Easy clean surface • Child lock • Easy cleaning surface • Grill pan (optional Accessories) – Available separately • Size: 30 cm



IND 64

- 4 ZONE Induction Hob • Flex zone technology • Schott Glass • Power Boost • Bar-be-que function • Timer (min):99 • Power Levels: 9 • LED Display • Auto Switch Off Safety • Temperature Limiter • Automatic Pan Detection • Spillage Protection • Overheat Detection • Smart Touch Control panel • Residual Heat Indicator • Timer Control • Easy Clean Surface • Child Lock • Easy Cleaning surface • Grill pan (optional Accessories) Available separately • Size: 60 cm



INDHP

- Grill pan (optional accessories) for induction hob • Cast iron for even heat distribution and retention • Pre-seasoned and ready to use • Suitable for all cooking surfaces • Integrated side handles



Series Clifton

B U I L T - I N O V E N S



CLOV6 RD

60 cm ELECTRIC OVEN with true convection

- Large cavity 60 L
- Red retro finish
- Retro analog dial
- Antique finish-bronze knobs and handle
- Memory function
- Three layers glass door
- Thermostat 250°C

Multi functions with mechanical control

- Fan + Central heating element
- Fan + Full grill
- Top element + Rotisserie
- Bottom element + Fan
- Top element + Bottom element
- Top element + Bottom element + Fan
- Top element + Bottom element + Rotisserie
- Half grill
- Defrost
- Oven light

Cabinet dimension

- 564mm x 580mm x 585mm(WxDxH)



CLOV6 CR

60 cm ELECTRIC OVEN with true convection

- Large cavity 60 L
- Cream retro finish
- Retro analog dial
- Antique finish-bronze knobs and handle
- Memory function
- Three layers glass door
- Thermostat 250°C

Multi functions with mechanical control

- Fan + Central heating element
- Fan + Full grill
- Top element + Rotisserie
- Bottom element + Fan
- Top element + Bottom element
- Top element + Bottom element + Fan
- Top element + Bottom element + Rotisserie
- Half grill
- Defrost
- Oven light

Cabinet dimension

- 564mm x 580mm x 585mm(WxDxH)



CLOV6 BL

60 cm ELECTRIC OVEN with true convection

- Large cavity 60 L
- Black retro finish
- Retro analog dial
- Antique finish-bronze knobs and handle
- Memory function
- Three layers glass door
- Thermostat 250°C

Multi functions with mechanical control

- Fan + Central heating element
- Fan + Full grill
- Top element + Rotisserie
- Bottom element + Fan
- Top element + Bottom element
- Top element + Bottom element + Fan
- Top element + Bottom element + Rotisserie
- Half grill
- Defrost
- Oven light

Cabinet dimension

- 564mm x 580mm x 585mm(WxDxH)



CLOV6 GR

60 cm ELECTRIC OVEN with true convection

- Large cavity 60 L
- Grey retro finish
- Retro analog dial
- Antique finish-bronze knobs and handle
- Memory function
- Three layers glass door
- Thermostat 250°C

Multi functions with mechanical control

- Fan + Central heating element
- Fan + Full grill
- Top element + Rotisserie
- Bottom element + Fan
- Top element + Bottom element
- Top element + Bottom element + Fan
- Top element + Bottom element + Rotisserie
- Half grill
- Defrost
- Oven light

Cabinet dimension

- 564mm x 580mm x 585mm(WxDxH)



Series
Mazzini

B U I L T - I N O V E N S



MZ OV6 TN

60 cm ELECTRIC OVEN

with True Convection

- Large cavity 67 L • Touch control panel
- Black glass with titanium finish fascia
- Two layers glass door
- Black stainless steel handle
- Child lock • Memory function
- Rapid heat up (boost)
- Thermostat 250°C

Multi functions

- Defrost + Fan
- Top heating element + Full grill + Rotisserie
- Full grill + Rotisserie
- Bottom element + Rotisserie
- Top element + Bottom element + Fan
- Circular heating element + Fan
- Top + Bottom element + Rotisserie
- Bottom element + Fan • Full grill + Fan
- Full grill + Circular heating + Fan
- Oven light

Cabinet dimension

- 564mm x 580mm x 590mm (WxDxH)



MZ ST6 TN

60 cm ELECTRIC COMBI STEAM OVEN

- Touch control panel
- Glass with titanium finish fascia
- 2 Layers glass door
- Black stainless steel handle
- Child lock
- Memory function
- Rapid heat
- Cavity 37 L
- Thermostat 250°C

Multi functions

- Defrost • Fan heat
- Top element
- Top element + Fan
- Steam
- Top element + Fan + Steam
- Descaling
- Fan heat + Steam

Cabinet dimension

- 564mm x 580mm x 455mm (WxDxH)



MZ WN6 TN

- Built-in wine cooler - 24 bottles
- Drop down door
- Black glass with titanium finish fascia
- Stylish interior with blue light
- Temperature range 4°-20°C
- Two layers glass door
- Black stainless steel handle
- Three slide-out wooden shelves
- Inner glass with UV - protection

Cabinet dimension

- 564mm x 580mm x 455mm (WxDxH)

Series Cassino

B U I L T - I N O V E N S



CSOV6 BS

60 cm ELECTRIC OVEN with true convection

- Extra large cavity 73 L
- Black glass fascia with black steel finish
- Sensor touch control panel
- Three layers glass door
- Black stainless steel handle
- Digital clock with automatic cut off timer
- With memory function • Child lock
- Thermostat 250°C

Multi functions

- Fan with central heating element
- Eco - energy saving baking mode
- Catalytic cleaning • Multi cooking mode
- Rapid heat • Warm disk mode
- Full grill + Fan • Full grill + Rotisserie
- Top element + Bottom element
- Top element + Bottom element + Fan
- Top element + Bottom element + Rotisserie
- Top element + Rotisserie
- Bottom element + Rotisserie
- Bottom element + Fan
- Top element + Fan
- Fan + Heating + Top element
- Eco cooking mode
- Fermentation Mode
- Defrost
- Oven light



KOV 60 ZN

60 cm ELECTRIC OVEN with true convection

- Cavity 60 L
- Stainless steel finish
- Rotary control dials
- Long stainless steel handle
- Two layer mirror glass door
- Function selector push and pull knob
- Internal cooling fan
- Thermostat 250°C

Multi functions oven

- Traditional oven top/bottom heating element
- Traditional oven with fan
- Lower heating element with fan
- Multi programming mode
- Rotisserie with center heating element
- Rotisserie grill with fan
- Convection heating element
- Oven light

Cabinet dimension

- 564mm x 580mm x 585mm



KOV 60 MPZ

60 cm ELECTRIC OVEN with true convection

- Cavity 60 L
- Stainless steel finish
- Rotary control dials
- Long stainless steel handle
- Two layer glass door
- Function selector push and pull knob
- Internal cooling fan
- Thermostat 250°C

Multi functions oven

- Traditional oven top/bottom heating element
- Traditional oven with fan
- Lower heating element with fan
- Rotisserie with center heating element
- Rotisserie grill with fan
- Convection heating element
- Oven light

Cabinet dimension

- 564mm x 580mm x 585mm



B U I L T - I N O V E N S



OV70AMSS

60cm Electric Oven with True Convection

- Cavity 70 L
- Anti-Finger Stainless Steel Finish
- Black Tempered Glass with Half Mirror Glass Finish
- Three Layer Glass Door
- Blue LED lit Rotary Control Dials • Long Stainless Steel Handle
- Internal Cooling Fan
- Energy Efficiency A class

Multi-Function Oven

- Defrost
- Traditional Oven Top and Bottom Heating Element
- Fan assisted Grill • Centre Heating Element with Fan
- Full Grill (Top Heating Element with Rotisserie)
- Oven Light

Accessories:

- One Grill Wire Shelf • One Oven Drip Tray • One Rotisserie Wire Shelf

Cabinet Dimension:

564mm x 580mm x 585 mm (WxDxH)



KOV 60 MHF

60 cm ELECTRIC OVEN with true convection

- Cavity 60 L
- Stainless steel finish
- Rotary control dials
- Long stainless steel handle
- Two layer mirror glass door
- Internal cooling fan
- Thermostat 250°C

Multi functions oven

- Traditional oven top/bottom heating element
- Traditional oven with fan
- Lower heating element with fan
- Rotisserie with center heating element
- Rotisserie grill with fan
- Convection heating element
- Oven light

Cabinet dimension

• 564mm x 580mm x 585mm (WxDxH)



KOV MLJ E6

60 cm ELECTRIC OVEN

- Extra large cavity 70 L
- Black tempered glass with anti finger s. steel finish
- Push and pull controls • 3 layer mirror glass door
- Matt black finish steel handle • Child lock
- Internal cooling fan • Thermostat 250°C

Multi functions oven

- Defrost
- Lower heating element
- Traditional oven top/bottom heating element with rotisserie
- Traditional oven with fan
- Top grill full element with rotisserie
- Top grill element with fan
- Convection
- Top grill centre element with rotisserie
- Oven light

Cabinet dimension

• 564mm x 580mm x 590mm (WxDxH)



KOV 73 MRFT

60 cm ELECTRIC OVEN

- Cavity 73 L
- Full black tempered glass finish
- Rotary control dials
- Long stainless steel handle
- 3 layer glass door
- Internal cooling fan
- Thermostat 250°C

Multi functions oven with mechanical timer

- Traditional oven top/bottom heating element
- Lower heating element
- Top grill element with rotisserie
- Traditional oven with fan
- Top element with rotisserie with fan
- Oven light

Cabinet dimension

• 564mm x 580mm x 585mm (WxDxH)



OV81TC BL

60 cm ELECTRIC OVEN

- Extra large cavity 81 L • Black reflective glass fascia
- Rotary electronic controls
- Large viewing window • 3 layer glass door
- Matt black steel handle • Child lock
- Memory function • Full touch controls

Multi functions oven with mechanical timer

- Oven light
- Top + bottom element
- Top + bottom element + fan • Bottom element
- Full grill + rotisserie
- Full grill + fan + rotisserie

Cabinet dimension

- 564mm x 580mm x 585mm (WxDxH)



OV81 GIKF

60 cm ELECTRIC OVEN

- Extra large cavity 81 L
- Black reflective glass fascia
- Rotary electronic controls
- Large viewing window
- 3 layer glass door
- Matt black steel handle
- Thermostat 250°C

Multi functions oven with mechanical timer

- Oven light
- Top + Bottom element
- Top + Bottom element + Fan
- Bottom element
- Full grill + Rotisserie
- Full grill + Fan + Rotisserie

Cabinet dimension

- 564mm x 580mm x 585mm (WxDxH)



KCM B2-BLK (Combi Oven)

60 cm ELECTRIC COMBI OVEN

- Large cavity 44 L • Touch control panel
- Premium black glass fascia
- Digital LED display • Internal cooling fan
- Thermostat 250°C

Multi functions

- 3D hot air technology • Combi mode
- Auto defrost • Rapid heating
- Auto programs • Childproof lock
- Multi power levels • Alarm • Shortcut cooking keys
- Microwave • Microwave + grill
- Defrost • Fan heat • Top element + fan
- Top and bottom element + fan
- Microwave + top element + fan
- Microwave + top and bottom element + fan
- Automatic programs (from P01 to P13)

Cabinet dimension

- 560mm x 560mm x 460mm (WxDxH)



MZWD6 TN

- Built-in dish-warming drawer
- 60 cm width 14 cm height
- Titanium finish fascia
- Fan heating
- Temperature adjustment from 30 ~70 degree

Cabinet dimension

- 564mm x 580mm x 135mm (WxDxH)



KOV 70 BA6

60 cm ELECTRIC OVEN

- Cavity 70 L
- Full black tempered glass finish
- LED lit rotary control dials
- Long stainless steel handle
- 3 layer glass door
- Internal cooling fan
- Thermostat 250°C

Multi functions oven with mechanical timer

- Defrost
- Top element with fan
- Lower element with fan
- Traditional oven top/bottom heating element with fan

Cabinet dimension

- 564mm x 580mm x 585mm (WxDxH)

B U I L T - I N O V E N S



KWDA-14

- 60 cm width 14 cm height warming drawer
- Black glass appearance
- Sensor touch control with timer

Cabinet dimension

- 564mm x 580mm x 135mm (WxDxH)



CSWD6 BS

- Built-in dish-warming drawer
- 60cm width 14cm height warming drawer
- Black glass fascia with stainless steel finish
- Sensor touch control with timer
- Telescopic full-depth pull-out with press + release mechanism
- Hot air fan system for heating crockery
- Cool front
- Temperature adjustment from 30–80 degree
- Anti Slip Mat

Cabinet dimension

- 564mm x 580mm x 135mm (WxDxH)

*The above dish-warmer is not the part of built-in. It can be fitted separately.



B U I L T - I N M I C R O W A V E S

KMW8A-BLK

- Full black tempered glass with touch controls
- Capacity 25 litres
- Push door opening button
- Interior lighting
- Microwave/Grill/Combination/Convection
- Input and output power (MWO):1450 W-900 W
- Input power (Grill): 1100 W
- Convection: 2500 W
- Digital clock with time display
- Thermostat 250°C

Cabinet dimension- 560mm x 580mm x 380mm (WxDxH) **Accessories** • Rotating glass plate • Wire shelf



KMW8A-SWT

- Full white tempered glass with touch controls
- Capacity 25 L
- Push door opening button
- Interior lighting
- Multi programming mode
- Microwave/Grill/Combination/Convection
- Input and output power (MWO):1450 W-900 W
- Input power (Grill): 1100 W
- Convection: 2500 W
- Digital clock
- Thermostat 250°C

Cabinet dimension

- 560mm x 580mm x 380mm (WxDxH)

Accessories

- Rotating glass plate • Wire shelf



KMW 5PJ BLK

- Full Black tempered glass finish
- Capacity 20 L
- Push door opening button
- Microwave/Grill/Combination
- Input and output power (MWO):1250 W-800 W
- Input power (Grill): 1000 W
- Digital clock with time display
- Thermostat 250°C

Cabinet dimension

- 560mm x 580mm x 380mm (WxDxH)

Accessories

- Rotating glass plate • Wire shelf

BUILT - IN MICROWAVES



KB 7A

- Anti finger stainless steel finish
- Capacity 32 L
- Front door with light mirror glass
- Multi programming mode
- Microwave/Grill/Combination/Convection
- Auto cooking menu (select weight of the cooking food)
- Auto defrost function with time & weight
- Input grill 1100 W
- Convection input – 2500 W
- Thermostat 250°C

Cabinet dimension

- 560mm x 550mm x 380mm (WxDxH)

Accessories

- Rotating glass plate • Wire shelf



KB 4A

- Anti finger stainless finish
- Oven capacity 28 L
- Front door with light mirror glass
- Interior lighting
- Multi programming mode
- Microwave/Grill/Combination/Convection
- Auto cooking menu
- Auto defrost function with time & weight
- Microwave output : 1000 W
- Input grill 1450 W
- Convection input – 2500
- Thermostat 250°C

Cabinet dimension-

- 560mm x 580mm x 380mm (WxDxH)

Accessories

- Rotating glass plate • Wire shelf



KMW HN 6 BLK

- Full black tempered glass with touch control
- Capacity 28 L
- Classy single glass door design
- Interior lighting
- Multi programming mode
- Microwave/Grill/Combination
- Input and output power (MWO): 1450 W-900 W
- Input power (Grill): 1000 W
- Thermostat 250°C

Cabinet dimension

- 560mm x 580mm x 380mm (WxDxH)

Accessories

- Rotating glass plate • Wire shelf

BUILT-IN DEEP FRYER & BAR-BE-QUE



KFRM 30 SS

- **Deep fryer electric** • 1 heating element 2300W • Oil container & temperature lamp
- Set by thermostat • Electric supply AC 230V • Size: 30 cm



BBQ 3

- **Built-in bar-be-que** • Grate • Tray • Lava stone • Power indicator lamp • Mechanical knob • Heating element • Cooking zone : 1 zone • Supply voltage / frequency – 220-240v-50-60hz • Total power -2000W



C O O K I N G R A N G E S



KAB 60

- 60 cm Cooking range with electric oven
- Black matt finish
- 4 gas burners
- Adjustable leg
- With one big triple flame burner
- Auto electric ignition
- Enamelled pan support
- Two layres glass oven door
- Mechanical timer
- Cavity up to 60 L
- Thermostat 250 °C
- One tray + One grid
- Adjustable leg
- Multi function oven
- Oven lamp
- Convection fan
- Cooling fan
- Rotisserie

Dimension

- 600mm X 600mm X 900mm (WXDXH)



KGM 90

- 90 cm Cooking range with electric oven
- Stainless steel finish
- 5 gas with one big triple flame sabaf burners
- Auto electric ignition
- Enamel pan support
- Two glass oven door with mirror finish
- Cavity 100 L
- Mechanical timer
- Thermostat
- One tray + one grid
- Adjustable leg
- Dish warmer compartment
- Multi function oven
- Oven lamp
- Convection fan
- Cooling fan
- Thermostat 250 °C

Dimension

- 900mm X 600mm X 900mm (WXDXH)



KGM 60

- 60 cm Cooking range with electric oven
- Stainless steel finish
- 4 gas with one big triple flame sabaf burners
- Auto electric ignition
- Enamel pan support
- Two glass oven door with mirror finish
- Cavity 59 L
- Mechanical timer
- Thermostat
- One tray + one grid
- Adjustable leg
- Dish warmer compartment
- Multi function oven
- Oven lamp
- Convection fan
- Cooling fan
- Thermostat 250 °C

Dimension

- 600mm X 600mm X 900mm (WXDXH)

D I S H W A S H E R S



DW CENTRA 60

- Free standing dishwasher
- Premium silver finish front
- Stainless steel interior
- 12 standard place settings
- Adjustable automatic rinse agent detergent
- Automatic detergent dispenser
- Salt container with water softener
- Safety interlock door mechanism
- Quiet operation • A+ energy efficiency
- Upper and lower spray arm
- Three stage filtration
- Easy push control with Digital display
- Half load
- Delay function (to set the delay time)
- Child lock • Memory function
- Warning Indicator
- Rated Volt:220-240 V 50Hz • Noise Level 55 dbs
- 4 washing programs:**
- Intensive Wash • ECO mode • 90 min Wash
- Rapid Wash
- Size : 60cm



DW VETRA 60

- Free standing dishwasher
- S S finish door panel and interior
- 12 standard place settings
- Three stage filtration
- Adjustable automatic rinse agent detergent
- Automatic detergent dispenser
- Salt container with water softener
- Safety interlock door mechanism
- Quite operation
- A++ energy efficiency
- Upper and lower spray arm
- Easy push control with digital display
- Half load
- Delay function (To set the delay time)
- Child lock
- Memory function
- Warning indicator
- Size : 60 cm



KDW BIN 60 INTRA

- Built-in dishwasher
- Stainless steel finish door panel
- 11 functions: 1. On/off 2. Strong wash function 3. Drying 4. Dual zone wash function 5. Display screen 6. Programme button 7. Delay button 8. Child lock 9. Delay function 10. Start push button 11. Programme indicator
- 14 place setting
- Digital display
- Easy push controls
- Lower rack and adjustable upper rack
- Three stage filtration system
- Low energy consumption
- Upper and lower spray arm with top spray
- Water softener with salt indicator
- Memory functions
- A++ energy efficiency
- Size : 60 cm



DW SPECTRA 60

- Fully integrated built in dishwasher
- 12 standard place settings
- Three stage filtration system
- Stainless steel interior
- Adjustable automatic rinse agent detergent
- Automatic detergent dispenser
- Salt container with water softener
- Safety interlock door mechanism
- Quite operation
- Memory function
- A++ energy efficiency
- Upper arm and lower arm
- Easy push control with digital display
- Half load
- Delay function (To set the delay time)
- Child lock
- Warning indicator
- Size : 60 cm

W I N E C O O L E R S



KWC - 24 (Free standing)

- Dual temperature control with LED light
- Large wooden shelves with sliding
- Black glass door with black casing
- Inner glass with UV-protection
- Compressor with fan cooling
- LED display
- Climate type ST
- Suggest temp 3-12 degree for white wine
12-20 degree for red wine
- Capacity: 26 Bottle (Approx)
- Product dimension:
395mm x 500mm x 875mm (wxdxh)



KWC - 62 (Free standing)

- Temperature control with light
- Large wooden shelves
- Glass door with stainless steel frame
- Stainless steel handle
- Inner glass with UV-protection
- Levelling legs
- Cooling fan
- Climate type ST
- Capacity: 16 Bottle Approx
- Product dimension:
430mm x 472mm x 617mm (wxdxh)



KWCTH-8

- Wine cooler thermoelectric
- Capacity 8 Bottles
- Single zone 8-18°C
- Touch control
- Mirror glass door
- LED display
- Stylish interior LED lighting
- Wire shelves
- Climate type ST
- Inner glass with UV-protection
- Memory function
- Product dimension:
260mm x 495mm x 475mm (wxdxh)



WC 92 (BI)

- Built-in wine Cooler - 36 Bottles
- Single zone, 5-20°C • Touch control
- Full mirror glass door
- LED display • Climate type ST
- Stylish interior LED lighting
- Wooden shelves
- Inner glass with UV - protection
- Trouble shoot alarm
- Memory function • 92 Ltr/36 bottles
- Product dimension:
590mm x 563mm x 595mm (wxdxh)

WINE COOLERS



WC 135 DZ

- Wine Cooler - 46 Bottles
- Dual zone, upper 5-22°C, lower 5-22°C
- Touch control • Full mirror glass door
- LED display • Climate type ST
- Stylish interior LED lighting
- Security lock • Wooden shelves
- Inner glass with UV-protection
- Trouble shoot alarm
- Memory function • 135 Ltr/46 bottles
- Product dimension:
595mm x 570mm x 820mm (wxdxh)



WC 418 DZ

- Wine Cooler - 171 Bottles
- Dual zone, upper 5-22°C, lower 5-22°C
- Touch control • Full mirror glass door
- Led display • Climate type ST
- Stylish interior LED lighting
- Security lock • Wooden shelves
- Inner glass with UV-protection
- Trouble shoot alarm • Memory function
- 418 Ltr/171 bottles
- Product dimension:
595mm x 680mm x 1770mm (wxdxh)



WC 76 DZ

- Wine Cooler - 29 Bottles
- Dual zone, upper 5-22°C, lower 5-22°C
- Touch control • Full mirror glass door
- Led display • Climate type ST
- Stylish interior LED lighting
- Security lock • Wooden shelves
- Inner glass with UV-protection
- Trouble shoot alarm • Memory function
- 76 Ltr /29 bottles
- Product dimension:
480mm x 430mm x 870mm (wxdxh)

BUILT-IN REFRIGERATOR



KRF 237 BI

- Built-in double door combi fridge
- Frost free
- Soft closing door
- Fridge capacity – 237 L
- Electronic touch control
- Reversible doors
- Energy consumption 222 kwh/year
- Noise level 42 dBA
- Silver protection
- Climate class – SN-T
- Tropicalised
- Transparent door racks
- Adjustable glass shelf
- 1 half depth salad drawer
- Energy rating A+/A

Dimensions:

Product dimensions: 535wx540dx1805h (mm)
Cabinet dimensions: 600wx580dx1850h (mm)



KCM69 4BSBJ - Without Auto Ignition
KC 69 4B AI (S/B/B/J) - With Auto Ignition

- Black toughened glass (8 mm)
- Four burner- 1 small, 2 big and 1 jumbo
- Heavy duty pan support (4 mm)
- Metal knobs
- Size : 69 cm



KC 57 4B SBJ - Without Auto Ignition
KC 58 4B AI (S/B/B/J) - With Auto Ignition

- Black toughened glass (8 mm)
- Four burner- 1 small, 2 big and 1 jumbo
- Heavy duty pan support (4 mm)
- Metal knobs
- Size : 60 cm



KC 71 3B SBJ - Without Auto Ignition
KC 72 3B AI (S/B/J) - With Auto Ignition

- Black toughened glass (8 mm)
- Three burner - 1 small, 1 big and 1 jumbo
- Heavy duty pan support (4 mm)
- Metal knobs
- Size : 70 cm



KC 60 2BSB - Without Auto Ignition
KC 60 2B AI (S/B) - With Auto Ignition

- Black toughened glass (8 mm)
- Two burner - 1 small / 1 big
- Heavy duty pan support (4 mm)
- Metal knobs
- Size : 60 cm



KC 60 2BJB - Without Auto Ignition
KC 60 2B AI (B/J) - With Auto Ignition

- Black toughened glass (8 mm)
- Two burner - 1 big / 1 jumbo
- Heavy duty pan support (4 mm)
- Metal knobs
- Size : 60 cm



KCM69 4BSBJ - SS Without Auto Ignition
KC 69 4B AI SS (S/B/B/J) With Auto Ignition

- Black toughened glass (8 mm)
- Four burner- 1 small, 2 big and 1 jumbo
- Heavy duty pan support (4 mm)
- Metal knobs
- Size : 69 cm



KC 57 4B SBJ - SS - Without Auto Ignition
KC 58 4B AI SS (S/B/B/J) - With Auto Ignition

- Black toughened glass (8 mm)
- Four burner- 1 small, 2 big and 1 jumbo
- Heavy duty pan support (4 mm)
- Metal knobs
- Size : 60 cm



KC 71 3B SBJ - SS - Without Auto Ignition
KC 72 3B AI SS (S/B/J) - With Auto Ignition

- Black toughened glass (8 mm)
- Three burner - 1 small, 1 big and 1 jumbo
- Heavy duty pan support (4 mm)
- Metal knobs
- Size : 70 cm



KC 60 2BSB-SS - Without Auto Ignition
KC 60 2B AI SS (S/B) - With Auto Ignition

- Black toughened glass (8 mm)
- Two burner - 1 small / 1 big
- Heavy duty pan support (4 mm)
- Metal knobs
- Size : 60 cm



KC 60 2BJB-SS - Without Auto Ignition
KC 60 2B AI SS (B/J) With Auto Ignition

- Black toughened glass (8 mm)
- Two burner - 1 big / 1 jumbo
- Heavy duty pan support (4 mm)
- Metal knobs
- Size : 60 cm

KAFF

KAFF APPLIANCES (INDIA) PVT LTD

Corporate Office - North
SS Plaza, 4th Floor, Opp. Hilton Garden Inn. Sec-47
Gurgaon - 122018
Tel.: 0124 - 2873000 (90 Lines)

Regional Office South
Karnataka: 080-40948668, Mob: 09341002334

Kerala: 09447974075

Telangana: 09885783478

Regional Office cum Experience Centre
Tamilnadu : No. 229, Royal Park, First Floor
Konnur High Road, Ayanavaram,
Chennai - 600 023
Tel.: 044 - 45090292/293/294
Mob.: 09999530856

West: 25, First Floor, Evershine Mall,
Link Road, Chincholi Bunder,
Malad (West), Mumbai - 400 064
Tel.: 022 - 40213481/82 Mob.: 07710069901

KAFF Experience Centres
New Delhi: Shop No. 25, Ground Floor,
MGF Metropolitan Mall,
Saket, New Delhi - 110017
Mob.: 09873193042

Gurgaon: S S Plaza, 3rd Floor, Opp. Hilton
Garden Inn. Sector 47, Gurgaon 122101
Mob.: 09910990140

Mumbai (Worli): Ground Floor, Atria Mall,
Worli - 07710072059.

Mumbai : 13, Ground Floor, Laxmi Plaza,
Laxmi Industrial Estate, New Link Road,
Andheri (W) Mumbai-400058
Mob.: 7710069901

Pune: Shop no - 12, Shangrilla Garden,
Bund Garden Road, Pune - 411001
Mob.: 09860609826

Kolkata: A-206, 2nd Floor, City Centre-2,
Rajarhat, Kolkata, West Bengal-700157
Tel.: 033-40620223, Mob.: 07603087638

Regional Office - East
Flat No G-10 Rajashree Apartment,
316, Canal Street, Beside of Gokul
Banquet, Shree Bhumi, Lake Town,
Kolkata - 700 048
Tel.: 033 - 40620223,
Mob.: 09999233846

Visit us at: www.kaff.in
Kaff Care: customercare@kaff.in
Toll Free - 1800-180-2221
sms KAFF at 56677

Follow us at



ISO 9001:2008



In keeping with our policy of continuous product upgradations, specifications, design and material may change without prior notice. No part of this catalogue, whole or in part, may be reproduced or utilized in any form or by any means without written consent from Kaff Appliances (India) Pvt. Ltd. © 2020-21

*Configurations shown in the picture may differ with the actual product.