

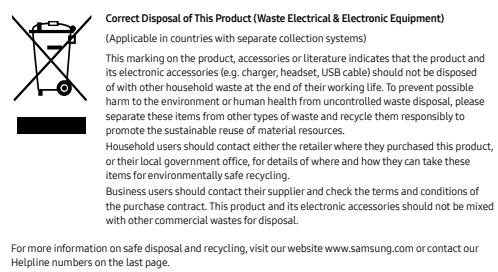
Contents

Safety information	4
What you need to know about the safety instructions	4
Important safety warnings	4
Important safety precautions	5
Critical usage warnings	7
Critical cleaning warnings	8
Usage cautions	9
Critical cleaning warnings	10
Instructions about the WEEE	10
Installation	11
What's included	11
Installation requirements	12
Step-by-step installation	12
Before you start	21
Detergent guidelines	21
Smart Check	23
Laundry options	24
Operations	29
Control panel	31
Smart things to start	31
Cycle overview	32
Special features	33
SmartThings	35
Open Source Announcement	37
Maintenance	36
Cleaning	37
Troubleshooting	44
Checkpoints	44
Information codes	46

2 English

Safety information

Instructions about the WEEE

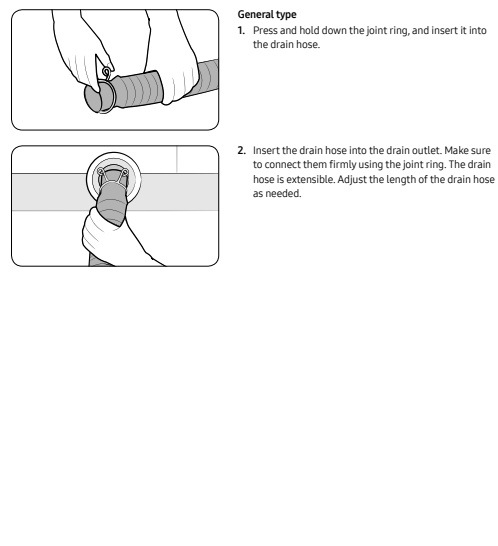


For more information on safe disposal and recycling, visit our website www.samsung.com or contact our helpline numbers on the last page.

10 English

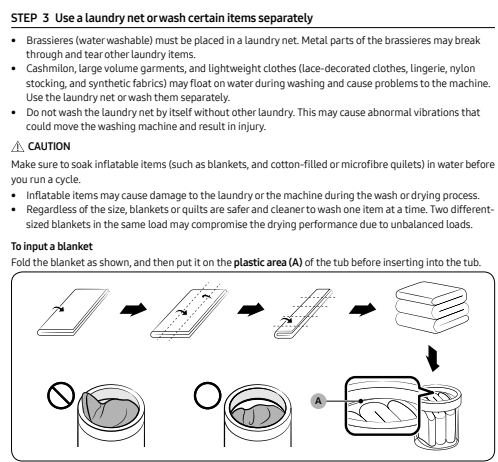
Installation

STEP 4 Position the drain hose



18 English

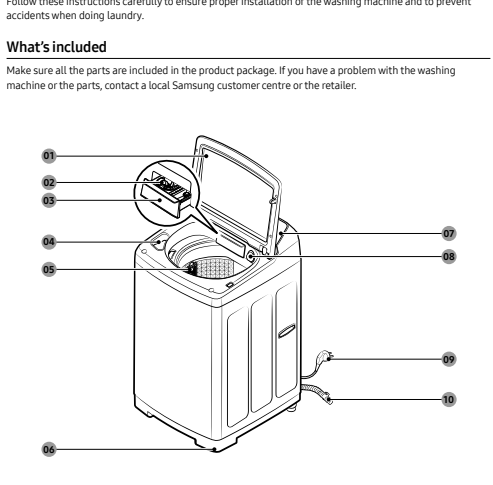
Before you start



28 English

Specification	51
Specification sheet	51

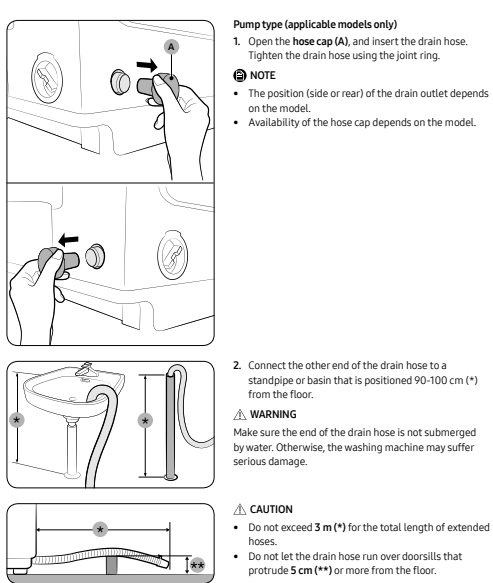
Installation



01 Lid	02 Bubble Kit	03 Detergent drawer
04 Beach compartment	05 Filter	06 Levelling feet
07 Control panel	08 Speed sign	09 Power cord
10 Drain hose		

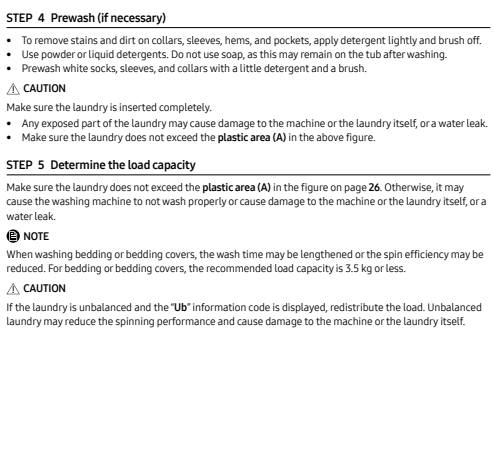
12 English

Installation



12 English

Before you start



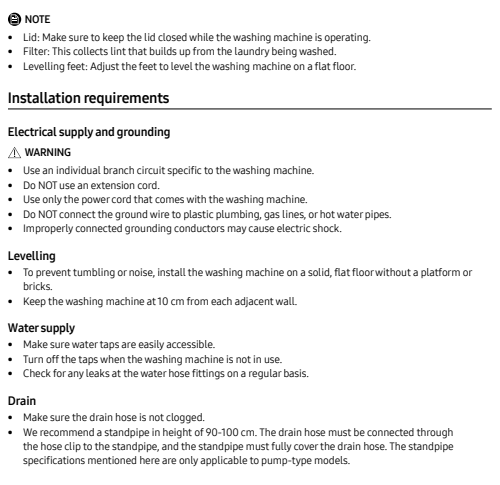
28 English

Safety information

Congratulations on your new Samsung washing machine. This manual contains important information on the installation, use and care of your appliance. Please take some time to read this manual to take full advantage of your washing machine's many benefits and features.	
What you need to know about the safety instructions	
Please read this manual thoroughly to ensure that you know how to safely and efficiently operate the extensive features and functions of your appliance. Please store the manual in a safe location close to the appliance for future reference. Use this appliance only for the intended purposes as described in this instruction manual.	
Warnings and important Safety Instructions in this manual do not cover all possible conditions and situations that may occur. It is your responsibility to use common sense, caution and care when installing, maintaining and operating your washing machine.	
Because the following operating instructions cover various models, the characteristics of your washing machine may differ slightly from those described in the manual and not all warning signs may be applicable. If you have any questions or concerns, contact your nearest service center or find help and information online at www.samsung.com .	
Important safety symbols	
What the signs and symbols in this user manual mean:	
WARNING Hazard or unsafe practices that may result in severe personal injury, death and/or property damage.	
CAUTION Hazard or unsafe practices that may result in personal injury and/or property damage.	
NOTE Indicates that a risk of personal injury or material damage exists.	
These warning signs are here to prevent injury to yourself and others. Please follow them explicitly.	
After reading this manual, store it in a safe place to be used in future.	
Read all instructions before using the appliance.	
All of our equipment that uses electricity and moving parts, potential hazards exist. To safely operate the appliance, familiarize yourself with its operation and structure when using it.	

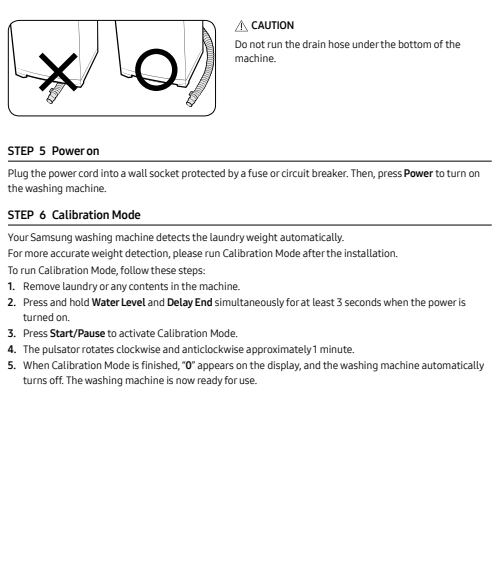
4 English

Installation



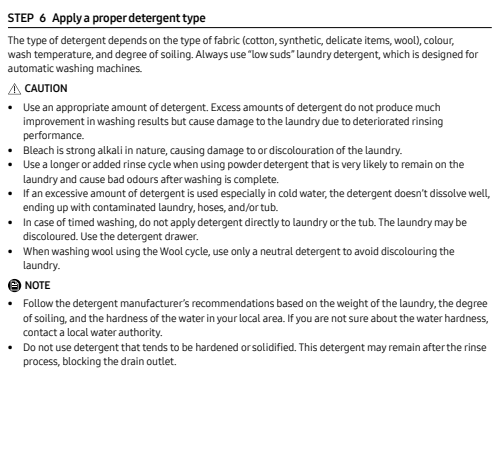
4 English

Installation



12 English

Before you start



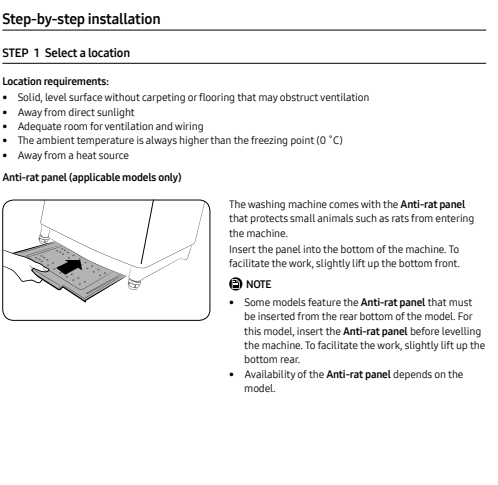
28 English

Important safety precautions

WARNING To reduce the risk of electric shock, or injury to persons when using your appliance, follow basic precautions, including the following:	
1. This appliance is not intended for use by persons (including children) with reduced physical, sensory or mental capabilities, or lack of experience and knowledge, unless they have been given supervision or instruction concerning use of the appliance by a person responsible for their safety.	
2. For use in Europe, This appliance can be used by children aged from 8 years and above and persons with reduced physical, sensory or mental capabilities or lack of experience and knowledge if they have been given supervision or instruction concerning use of the appliance in a safe way and understand the hazards involved. Children shall not play with the appliance. Cleaning and user maintenance shall not be played by children without supervision.	
3. Children should be supervised to ensure that they do not play with the appliance.	
4. If the supply cord is damaged, it must be replaced by the manufacturer, its service agent or similarly qualified persons in order to avoid a hazard.	
5. The new hose-sets supplied with the appliance are to be used and old hose-sets should not be reused.	

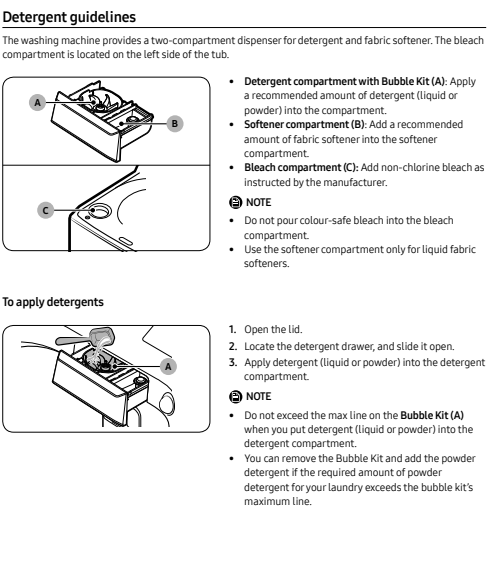
4 English

Step-by-step installation



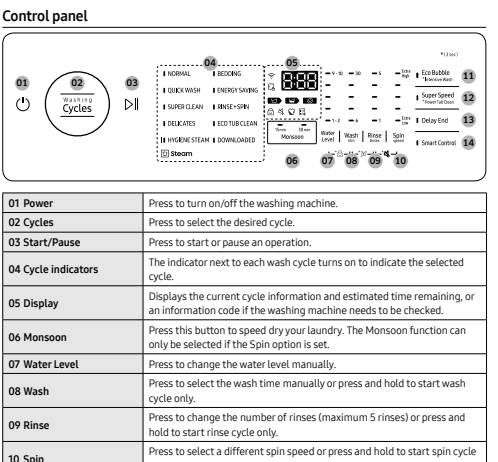
4 English

Before you start



12 English

Operations



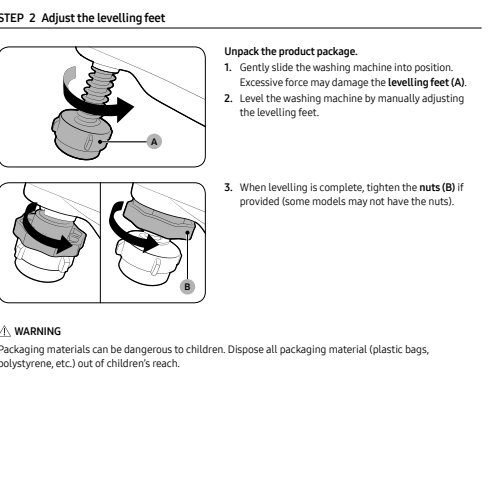
28 English

Safety information

6. For washing machines having ventilation openings in the base, the installation instructions shall state that the openings must not be obstructed by a carpet.	
7. For use in Europe, Children of less than 3 years should be kept away unless continuously supervised.	
8. CAUTION: In order to avoid a hazard due to inadvertent resetting of the thermal cut-out, this appliance must not be supplied through an external switching device, such as a timer, or connected to a circuit that is regularly switched on and off by the utility.	
9. This appliance is intended to be used in household only and it is not intended to be used such as: <ul style="list-style-type: none">staff kitchen areas in shops, offices and other working environments;firm houses;by clients in hotels, motels and other residential type environments;bed and breakfast type environments;areas for communal use in blocks of flats or laundrettes.	
Critical installation warnings	
WARNING The installation of this appliance must be performed by a qualified technician or service company. <ul style="list-style-type: none">Failure to do so may result in electric shock, fire, an explosion, problems with the product, or injury. Plug the power cord into a wall socket that meets local electrical specifications. Use the socket for this appliance only, and do not use an extension cord. <ul style="list-style-type: none">Sharing a wall socket with other appliances using a power strip or extending the power cord may result in electric shock or fire.	

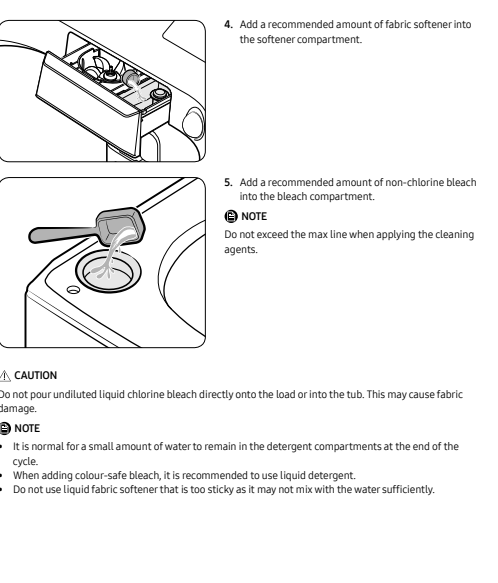
6 English

Installation



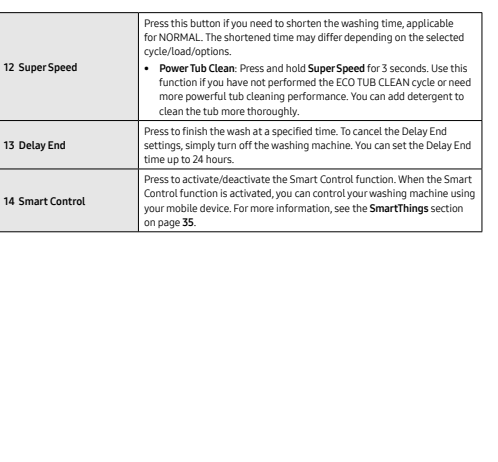
14 English

Before you start



22 English

Operations

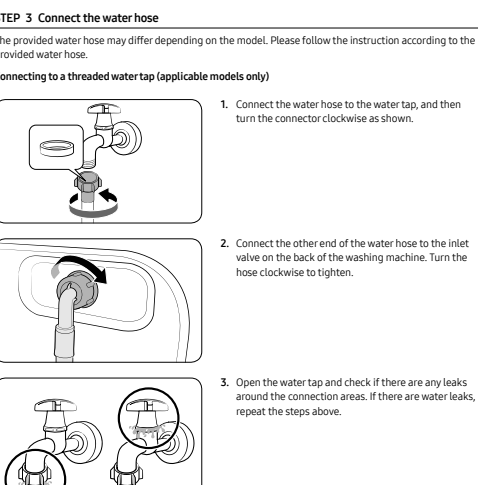


30 English

• Ensure that the power voltage, frequency, and current are the same as those of the product specifications. Failure to do so may result in electric shock or fire. Plug the power plug into the wall socket firmly.	
Remove all foreign substances such as dust or water from the power plug terminals and contact points using a cloth or a regular brush.	
• Do not touch the power plug with wet hands.	
• Failure to do so may result in electric shock or fire.	
• Failure to do so may result in electric shock or fire.	
• If the appliance generates a strange noise, a humming noise, or smoke, unplug the power plug immediately and contact your nearest service center.	
• Failure to do so may result in electric shock or fire.	
In the event of a gas leak (such as propane gas, LPG, etc.), ventilate immediately without touching the power plug. Do not touch the appliance or power cord.	
• Do not use a venting fan.	
• A gas leak may result in an explosion or fire.	
Do not ground the appliance to a gas pipe, plastic water pipe, or telephone line.	
• This may result in electric shock, fire, an explosion, or problems with the product.	
• Always plug the power cord into a socket that is not grounded correctly and make sure that it is in accordance with local and national regulations.	
Do not install the appliance near a heater or any inflammable material.	
• Do not install the appliance in a humid, oily or dusty location, or in a location exposed to direct sunlight or water leak (drain).	
• Do not install the appliance in a location exposed to temperature extremes.	
• Frost may cause the tubes to burst.	
• Do not use an electric transformer.	
• This may result in electric shock or fire.	
Do not use a damaged power plug, damaged power cord, or loose wall socket.	
• This may result in electric shock or fire.	
Do not pull or excessively bend the power cord.	
• Do not twist or tie the power cord.	
• Do not heat the power cord over an animal object, place a heavy object on the power cord, insert the power cord between electric plugs, the power cord on the space behind the appliance.	
• This may result in electric shock or fire.	
This appliance should be positioned so that the power plug, the water supply taps, and the drain pipe are accessible.	
Installation cautions	
CAUTION This appliance should be positioned in such a way that the power plug is easily accessible. <ul style="list-style-type: none">Failure to do so may result in electric shock or the cause of electric leakage.	

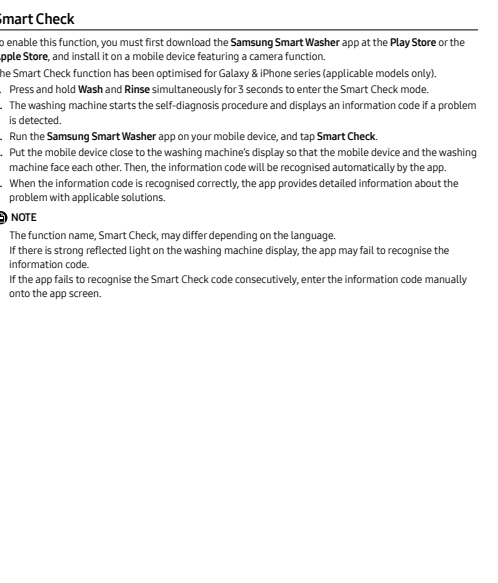
7 English

Installation



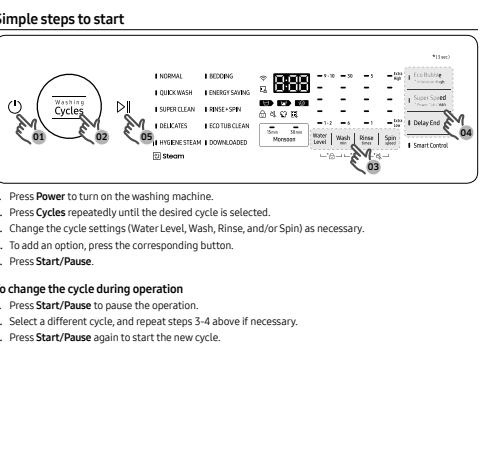
14 English

Before you start



22 English

Operations



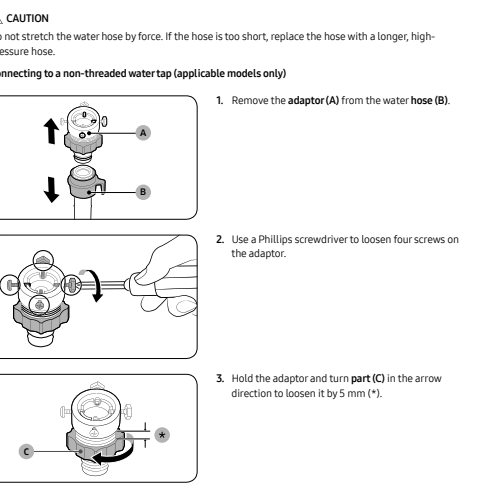
32 English

Safety information

Critical usage warnings	
WARNING If the appliance is flooded, turn off the water & power supplies immediately and contact your nearest Samsung Customer Service. <ul style="list-style-type: none">Do not touch the power plug with wet hands.Failure to do so may result in electric shock.If the appliance generates a strange noise, a humming noise, or smoke, unplug the power plug immediately and contact your nearest service center.Failure to do so may result in electric shock or fire. In the event of a gas leak (such as propane gas, LPG, etc.), ventilate immediately without touching the power plug. Do not touch the appliance or power cord.	
• Do not use a venting fan.	
• A gas leak may result in an explosion or fire.	
Do not use children play in or on the washing machine. In addition, when disposing of the appliance, remove the lid.	
• If trapped inside the product, children may suffocate to death.	
Do not wash items contaminated with gasoline, kerosene, benzene, paint, turpentine, alcohol or other inflammable or explosive substances.	
• Do not wash the power plug with wet hands.	
• This may result in electric shock.	
Do not use your hand or a metal object under the washing machine while an operation is in progress. <ul style="list-style-type: none">Failure to do so may result in electric shock or fire.	
Do not attempt to repair, disassemble, or modify the appliance yourself. <ul style="list-style-type: none">When the appliance needs to be repaired or replaced, contact your nearest service center.Failure to do so may result in electric shock, fire, an explosion, or problems with the product, or injury.In the case, the product will not be covered by the standard warranty provided by Samsung and no responsibility can be attributed to Samsung for malfunctions or damages resulting from doing it. This appliance should be positioned so that the power plug, the water supply taps, and the drain pipe are accessible.	
Do not put your hand into the spinning tub during the spin cycle. <ul style="list-style-type: none">This may result in injury if the tub stops spin stopping within 15 seconds after you open the lid.Contact your nearest Samsung Customer Service.	
Do not let children or pets play in or on your washing machine. The washing machine lid does not open easily from the inside and children may be seriously injured if trapped inside.	

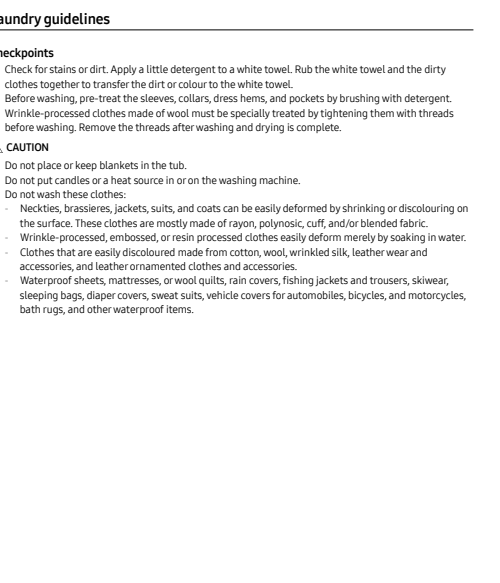
8 English

Installation



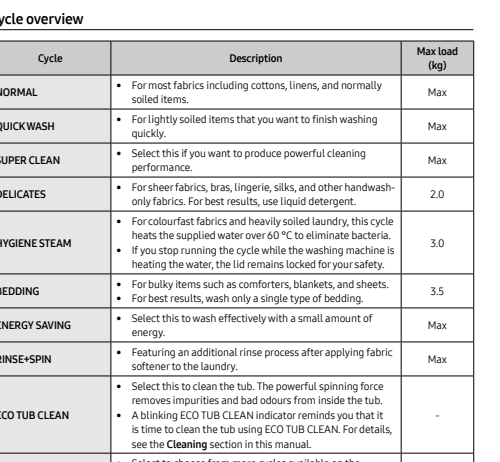
16 English

Before you start



22 English

Operations

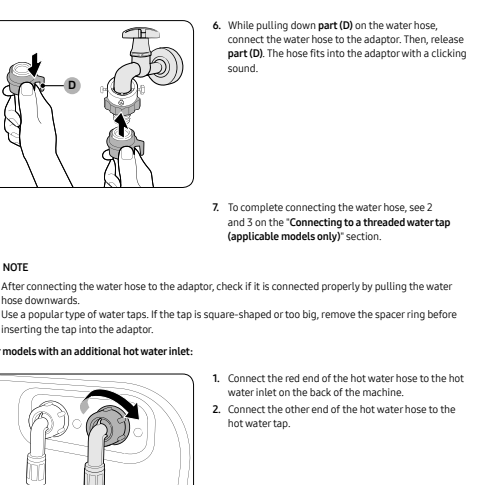


32 English

Do not use the water to exceed 50 °C, when using the hot water in your washing machine. Plastic parts may be deformed or damaged, and this may result in electric shock or fire.	
Usage cautions	
CAUTION When the washing machine is contaminated by a foreign substance such as detergent, dirt, food waste, etc., unplug the power plug and clean the washing machine using a damp cloth. <ul style="list-style-type: none">Failure to do so may result in decontamination, deformation, damage, or fire. The product you have purchased is designed for domestic use only. Using the product for business purposes qualifies as a product misuse. In the case, the product will not be covered by the standard warranty provided by Samsung and no responsibility can be attributed to Samsung for malfunctions or damages resulting from such misuse.	
Do not stand on the appliance or place objects such as laundry, lighted candles, lighted cigarettes, or lit matches, chemicals, metal objects, etc. on the appliance. <ul style="list-style-type: none">This may result in electric shock, fire, an explosion, or problems with the product, or injury.	
Do not press the buttons using sharp objects such as pins, knives, fingernails, etc. <ul style="list-style-type: none">This may result in electric shock or injury.	
Critical cleaning warnings	
WARNING Do not clean the appliance by spraying water directly onto it. <ul style="list-style-type: none">Do not use the strong acidic cleaning agent. Before cleaning or performing maintenance, unplug the appliance from the wall socket. <ul style="list-style-type: none">Failure to do so may result in electric shock or fire.	

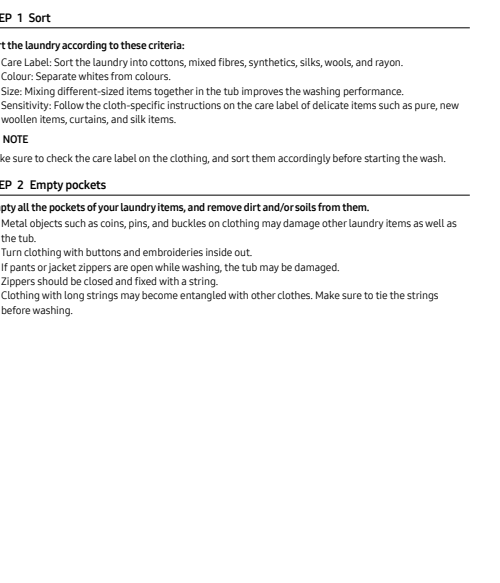
8 English

Installation



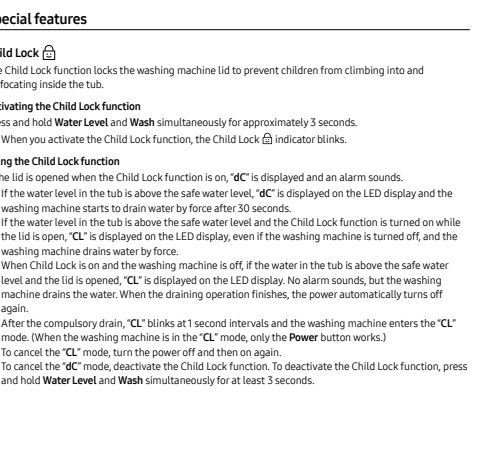
16 English

Before you start



22 English

Operations



32 English