



SOUND SLICK 8

80W Touch Control Soundbar



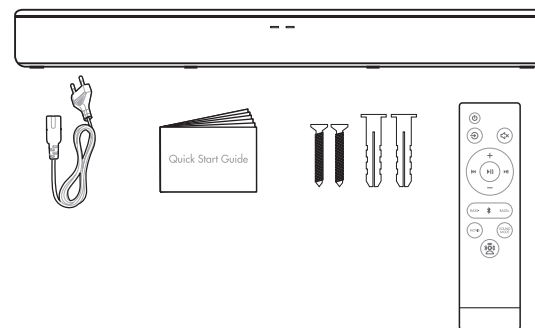
Thank you for Purchasing Sound Slick 8 Sound Bar. To experience safe and seamless music listening, we suggest you to please read this user manual carefully.

USER MANUAL

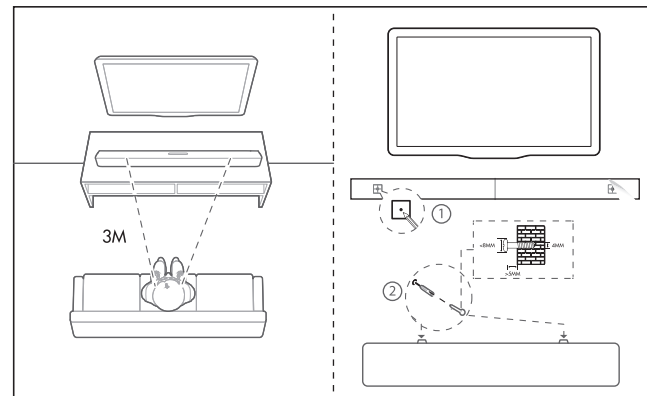


What's Inside

Before using your product, read all safety information carefully.
AC Charge Cable, Manual, Wall Mount Screw, Remote Control



Position the Soundbar



Customize Your Experience

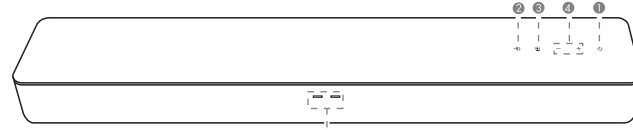
With four different sound modes, you can match your sound to your content and your mood!



- Music works great for music and podcasts, Standard for TV programs.
- News enhance human voices (Clear Voice)
- Movie for an expansive theater experience. Virtual 3D Surround Technology, Take your home cinema experience to new heights with sound that comes from above and all around you.
- With Spatial Sound tracks you'll experience the sense of being surrounded in music like never before. jaw-dropping sound in every direction.

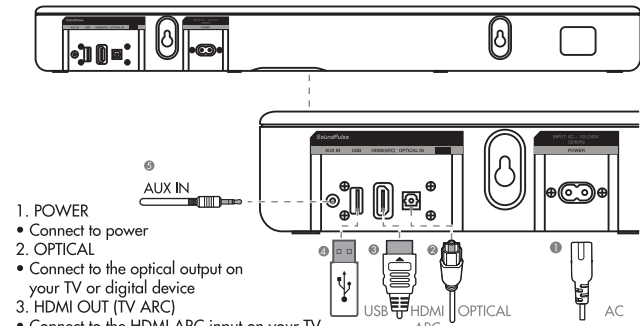
1 PRODUCT OVERVIEW

Soundbar Controls



- Power
 - Switch on or to standby
 - Source
 - Select a sound source: Bluetooth/Optical/Aux/HDMI(ARC)/USB (when you insert HDMI cable or USB to use, it will have voice prompt)
 - Spatial Sound
 - Volume
 - Short press "+" or "-" for VOL+ and VOL-
 - Long press to choose the previous or next song
 - Status display
- Green light: Aux in mode/HDMI(ARC)/Optical mode
Red light: Power off light
Blue light: Bluetooth mode
White light: USB disk mode

Connectors



- POWER
- Connect to power
- OPTICAL
- Connect to the optical output on your TV or digital device
- HDMI OUT (TV ARC)
- Connect to the HDMI ARC input on your TV
- USB
- Connect to a USB storage device for audio play
- AUX
- Connect to the AUX output on your TV or digital device

2 Specification

General specification:

- Power supply: Soundbar AC~100-240V 50/60Hz
- Total speaker power output : 80W
- Output power(RMS) : Subwoofer: 40W Middle&High: 20Wx2
- Speakers Middle&High: 51 x 91mm x2 Subwoofer: 78mm(3") x1

Wireless specification:

- Bluetooth version: 5.3
- Bluetooth profile: A2DP V1.3, AVRCP V1.5

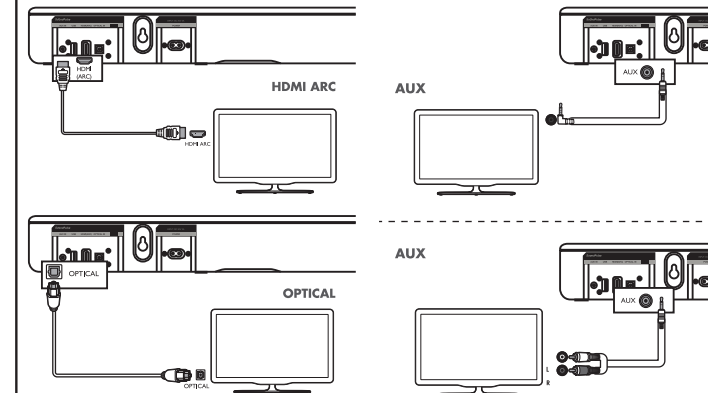
Dimensions:

- Dimensions (W x H x D): 616 x 103 x 65mm (Soundbar)

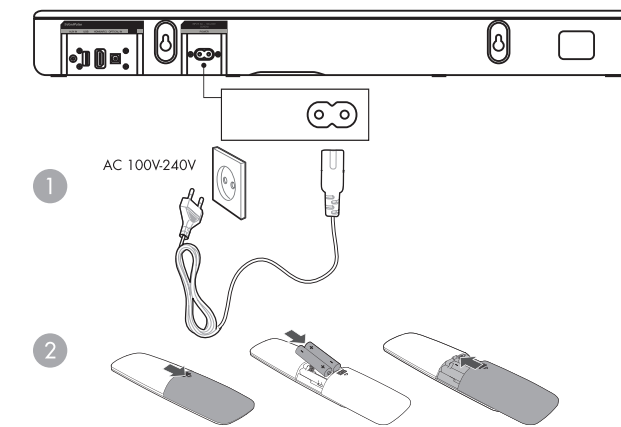
Audio specification:

- Frequency response: 40Hz - 20KHz
- Audio inputs: Optical, Bluetooth, Aux,HDMI(ARC)
- USB port: Type A
- Supporting file format: mp3, wav

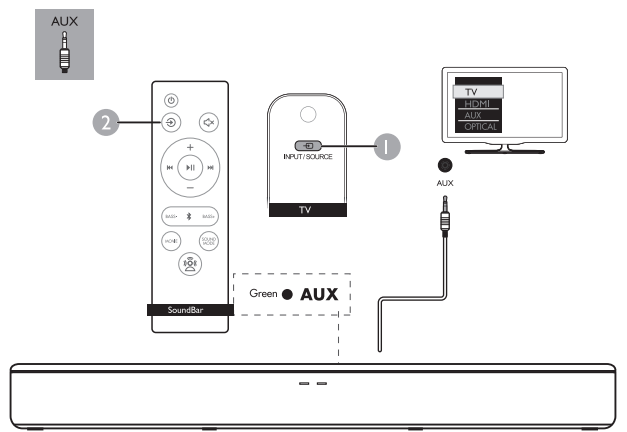
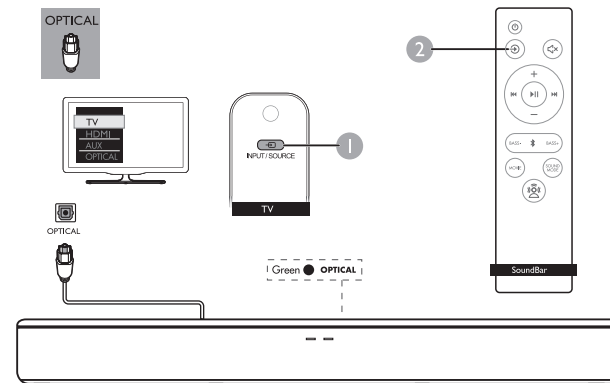
3 Hear audio from TV in one of the following ways



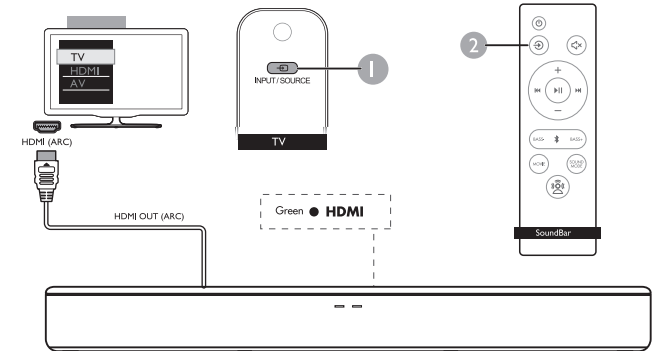
4 Switch on the SoundBar



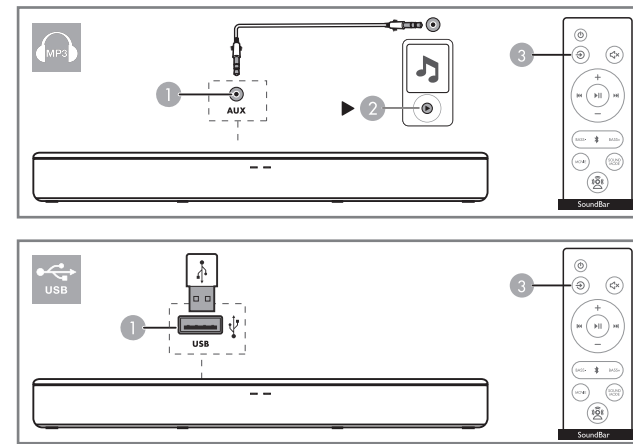
5 Select the correct audio source



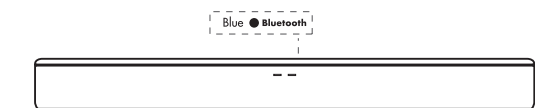
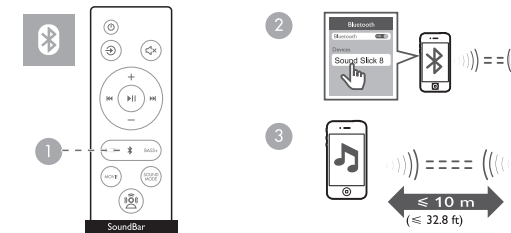
Note: 1. At HDMI(ARC) mode, when we power on/ off the TV, the soundbar will power on/off accordingly
2. Due to system compatibility, the operating methods may vary in HDMI(ARC) mode.



6 Play other devices



7 Play audio through Bluetooth



Note: The product will power on automatically if no operations for about 20 minutes under bluetooth mode



www.portronics.com

For Support

Visit : www.portronics.com

Email : help@portronics.com

Contact No. : +91 9555245245, 011-42413131

(Working Hrs. : Monday - Saturday 10:00am - 6:00pm)



E-Waste Management

E: info@3recycler.com

For E-Waste & ROHS compliance

refer to www.portronics.com/ewaste