

**RINSING**

**Rinsing**

- Rinse with water-filling**
- Put the laundries into the wash tub. Select suitable wash program according to the laundries.
  - Adjust the water level  
Set the water level with water level adjusting lever according to the laundries quantity. Then fill suitable water continuously.
  - Rinse  
Adjust the wash timer to 5-7 minutes to do rinsing. (Repeat the midway spinning and rinsing with stored water for 2-3 times)
- Rinse with stored water**
- Put the laundries into the wash tub. Select suitable wash speed according to the laundries.
  - Fill water to preset water level.
  - Rinse  
Adjust the wash timer to 2-3 minutes to do rinsing.
  - When the laundries quantity is a few, please use "Standard" Wash program. If you use "Strong" Wash program, it may splash.

**SPINNING**

**Spinning**

- Install the machine on flat and rigid surface only.
- Do not keep wet clothes on panel. Water may enter electrical parts and can create electric shock. Make sure of earth connecting before using washing machine
- Put the laundries into the spin tub evenly and smoothly.
- Press the spinner cap in the tub properly. Close the inner and outer cover of the spin tub.
- Turn off water supply before spin time selection. Select suitable spin time according to the laundries and do spinning
- Do not put your hand in spin dryer until it have completely stopped.
- During Spinning, if there is abnormal sound, it is generally due to slanting placement of the laundries. Please stop the machine & re-order the laundries. Open the lid and put laundry one by one in spin tub and put spinner cap on laundry.
- In Spinning, it will pause the work if you open the outer cover of spin tub. Close it to resume to spinning.

**DISPOSAL AFTER WASHING**

- After using the machine, please clean the lint and foreign materials of the lint filter and over flow filter in time. Otherwise it may result in lint deposition on washed clothes.
- Please first pull off the power plug from the receptacle before cleaning.

**PACKING LIST**

Name	Quantity	Description
● User's manual	● One piece	In Accessories Bag
● Warranty manual	● One piece	Attached In User Manual
● Water inlet hose	● One piece	In Accessories Bag
● Lint filter or Magic Filter	● One piece	Fitted in Machine
● Spinner Cap	● One piece	In Accessories Bag
● Twin Tub Washing Machine	● One set	

**SPECIFICATION**

Capacity Series	Water Level / Water Quantity	Injection Pressure (MPa)	Rated Voltage	Frequency	Wash / Spin Capacity
HTW65-187 Series	Max. 48L, Med. 41L, Min. 33L	0.02 - 0.2	220V ~ / 50Hz		6.5kg / 4.5kg
HTW65/70-1187 Series	Max. 56L, 5/90L, 4/45L, 3/40L, 2/35L, 1/30L	0.02 - 0.2	220V ~ / 50Hz		6.9kg/7kg/4.5kg
HTW70-178/186 Series	Max. 56L, 5/90L, 4/45L, 3/40L, 2/35L, 1/30L	0.02 - 0.2	220V ~ / 50Hz		7.0kg / 4.5kg
HTW85-186/1159 Series	Max. 79L, 5/73L, 4/66L, 3/60L, 2/53L, 1/47L	0.02 - 0.2	220V ~ / 50Hz		8.5kg / 6.0kg
HTW90-178 Series	Max. 79L, 5/73L, 4/66L, 3/60L, 2/53L, 1/47L	0.02 - 0.2	220V ~ / 50Hz		8.0kg/6.0kg
HTW85-178 Series	Max. 79L, 5/73L, 4/66L, 3/60L, 2/53L, 1/47L	0.02 - 0.2	220V ~ / 50Hz		8.0kg/6.0kg
HTW90-1159 Series	Max. 89L, Med. 76L, Min. 65L	0.02 - 0.2	220V ~ / 50Hz		9.0 kg / 6.0 kg
HTW90-1128 Series	Max. 89L, Med. 76L, Min. 65L	0.02 - 0.2	220V ~ / 50Hz		9.0 kg / 6.0 kg
HTW95-178 Series	Max. 89L, Med. 76L, Min. 65L	0.02 - 0.2	220V ~ / 50Hz		9.5 kg / 6.0 kg
HTW95-186 Series	Max. 89L, Med. 76L, Min. 65L	0.02 - 0.2	220V ~ / 50Hz		9.5 kg / 6.0 kg
HTW100-178 Series	Max. 89L, Med. 76L, Min. 65L	0.02 - 0.2	220V ~ / 50Hz		10.0 kg / 6.0 kg
HTW80-1159 Series	Max. 80L, 4/70L, 3/60L, 2/50L, 1/40L	0.02 - 0.2	220V ~ / 50Hz		8.0kg / 6.0kg
HTW85-178 Series	Max. 80L, 4/70L, 3/60L, 2/50L, 1/40L	0.02 - 0.2	220V ~ / 50Hz		8.5kg / 6.0kg
HTW80-1128 Series	Max. 80L, 4/70L, 3/60L, 2/50L, 1/40L	0.02 - 0.2	220V ~ / 50Hz		10.0 kg / 6.0 kg
HTW80-1169 Series	Max. 79L, 5/73L, 4/66L, 3/60L, 2/53L, 1/47L	0.02 - 0.2	220V ~ / 50Hz		8.0kg/6.0kg
HTW75-178 Series	Max. 55L, Med. 40L, Min. 26L	0.02 - 0.2	220V ~ / 50Hz		7.5kg/4.5kg
HTW75-1169 Series	Max. 55L, Med. 40L, Min. 26L	0.02 - 0.2	220V ~ / 50Hz		7.5kg/4.5kg
HTW85-178BKN/BK	Max. 79L, 5/73L, 4/66L, 3/60L, 2/53L, 1/47L	0.02 - 0.2	220V ~ / 50Hz		8.5kg / 6.0kg
HTW85-178G	Max. 88L, 5/80L, 4/71L, 3/62L, 2/54L, 1/48L	0.02 - 0.2	220V ~ / 50Hz		9.0kg/6.0kg
HTW100-178BKN	Max. 88L, 5/80L, 4/71L, 3/62L, 2/54L, 1/48L	0.02 - 0.2	220V ~ / 50Hz		10.0 kg / 6.0 kg
HTW110-178 Series	Max. 88L, 5/80L, 4/71L, 3/62L, 2/54L, 1/48L	0.02 - 0.2	220V ~ / 50Hz		11.0 kg / 6.0 kg
HTW90-178FL	Max. 88L, 5/80L, 4/71L, 3/62L, 2/54L, 1/48L	0.02 - 0.2	220V ~ / 50Hz		9.0kg/6.0kg
HTW85-186BBK	Max. 79L, 5/73L, 4/66L, 3/60L, 2/53L, 1/47L	0.02 - 0.2	220V ~ / 50Hz		8.5kg / 6.0kg
HTW85-178FL/LBK	Max. 79L, 5/73L, 4/66L, 3/60L, 2/53L, 1/47L	0.02 - 0.2	220V ~ / 50Hz		8.5kg / 6.0kg
HTW90-186	Max. 79L, 5/73L, 4/66L, 3/60L, 2/53L, 1/47L	0.02 - 0.2	220V ~ / 50Hz		9.0kg/6.0kg

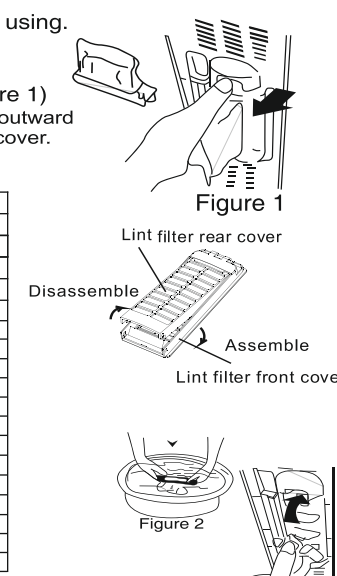
\* Refer Specification as per model series

**CLEANING THE LINT & MAGIC FILTER**

**Cleaning the lint & Magic Filter**

- It must be cleaned in time after each using.
- Take off the lint filter  
Put hand at the indicated position. Push down to take it off. (See to Figure 1)  
Pull the lower end of lint filter rear cover outward to disassemble it from the lint filter front cover. Remove lint completely with clear water.  
Magic Filter Models:

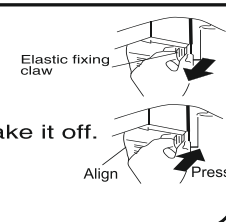
Model	Magic Filter
HTW85-186/1159 Series	Yes
HTW90-178/186 Series	Yes
HTW75-1169 Series	Yes
HTW80-178/186 Series	Yes
HTW90-1159 Series	Yes
HTW90-1128 Series	Yes
HTW85-178 Series	Yes
HTW95-186S Series	Yes
HTW100-178 Series	Yes
HTW80-1159 Series	Yes
HTW85-178 Series	Yes
HTW95-186S Series	Yes
HTW80-1128 Series	Yes
HTW80-1169 Series	Yes
HTW75-178 Series	Yes
HTW75-1169 Series	Yes
HTW85-178BKN/BBK	Yes
HTW110-178 Series	Yes
HTW90-178 FL	Yes



- Clean the lint  
Put it in water and clean while it is still wet. (See to Figure 2)
- Install the lint filter  
After cleaning, insert the bottom of the lint filter (marked with "down side") into the overflow filter. Then push the upper part of the filter in (marked with "up side"). (See to Figure 3)

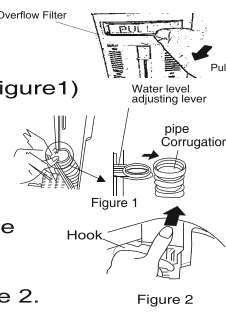
**CLEANING THE OVER FLOW FILTER**

- Too much lint on the overflow filter will influence the normal usage of the machine. Please clean it regularly.
- Take off the overflow filter.  
As indicated in the figure, nip the elastic fixing claw and pull it to the direction of the arrow to take it off.
- For fixing overflow filter, first align overflow filter from opposite side of elastic fixing claw, and then press elastic fixing claw to fix overflow filter properly.



**Cleaning the overflow filter**

- Pull overflow filter outside for cleaning.
- Take off the corrugation pipe.  
Dismantle the upper part of the corrugation pipe inside the overflow filter (as indicated in Figure 1)
- Cleaning the overflow filter.  
Clean the lint around the filter and surrounding visible area, flush with tap water.
- Install the overflow filter.  
(a) Install the corrugation pipe.  
(b) Insert the mounting plate at the bottom of the filter into the valve cover.  
(c) Hang up the hook at the left upper side.  
(d) Push the upper part in as indicated in Figure 2.



**E-WASTE GUIDELINE FOR HAIER INDIA**

**What is E-Waste or Electronic Waste?**

Electronic waste (e-waste) is a term which refers to unusable, discarded and old, electric & electronic appliances such as refrigerators, LED/LCD TV, microwave, washing machines, home air conditioner, etc. As per E-waste (Management and Handling) Rules, 2016 e-waste "e-waste" means electrical and electronic equipment, whole or in part discarded as waste by the consumer or bulk consumer as well as respects from manufacturing, refurbishment and repair processes has been categorized into three main categories, i.e. Consumer Electronics/Home appliances and IT & Telecom, Refrigerator, washing machines, home air conditioner LED/LCD etc. represents Consumer Electronics. On the other hand computers, desktop, laptop mobile phones, etc. and its component represents Telecom & IT.

E-waste broadly covers waste from all electronic and electrical appliances and contains different hazardous materials which are harmful to human health and the environment if not disposed of carefully. While some naturally occurring substances are harmless in nature, their use in the manufacture of electronic equipment often results in compounds which are hazardous for example chromium hexavalent chromium VI. Thus Ministry of Environment, Forest & Climate Change, Govt. of India had issued directions for the reduction in the use of hazardous substances in the manufacture of electrical and electronic equipment and their components or consumables or parts or spares. The Ministry of Environment, Forest & Climate Change, Govt. of India in furtherance of its effort to reduce the hazard occurring from rapid growth in the Consumer Durable and IT-Telecom market had made rules called as E-waste (Management and Handling) Rules, 2016 under Environment Protection Act, 1986.

**HAZARDS OF IMPROPER HANDLING AND/OR IMPROPER RECYCLING OF ELECTRONIC WASTE**  
Electronic equipment contains toxic materials such as lead, cadmium, and brominated flame-retardants. An improper handling and/or improper recycling of the Electronic Waste results in these hazardous materials/substances getting released into our ecological/biological systems thereby leading to various health hazards. The hazardous contents in the electronic equipment include:  
**Health:** The informal method of recycling extended health hazards. For example, primary and secondary exposure to toxic metals, such as lead, results generally from open air burning used to retrieve valuable components such as gold.  
**Inhalation:** from burning e-waste creates fine particulate matter, which is linked to pulmonary and cardiovascular disease.  
**Environment:** The informal method of recycling extended environment hazards too. For example when different e-waste is burnt to extract metals from it, toxic chemicals are released into the air, damaging the atmosphere.

- Lead - Brominated Flame Retardants - Chromium - Mercury - Beryllium - Cadmium - Barium - Carbon Black - Phosphor

**E WASTE TOXIC COMPONENT & THEIR DAMAGE TO HUMAN HEALTH**

Toxic Materials	Birth Defects	Brain Damage	Heart, Liver, Lung & Spleen Damage	Kidney Damage	Neurological System Damage	Skeletal System Damage
Barium	X	X	X	X	X	X
Cadmium	X	X	X	X	X	X
Lead	X	X	X	X	X	X
Chromium	X	X	X	X	X	X
Mercury	X	X	X	X	X	X
Nickel	X	X	X	X	X	X
Palladium	X	X	X	X	X	X
Rhodium	X	X	X	X	X	X

**Wider safe recycling, most of these toxic components will end in land fill-positioning Soil and water.**

- The Dos of Electronic Waste Recycling:**
- Give the discarded Electronic Equipments only to the authorized collection centres so that the same can be properly recycled in the basis meant for the Electronic Waste.
  - Drop the discarded Electronic Equipments in an unscientific manner if the material is disposed of open, then it may cause health risks and damage to the environment. E-waste can be considered as a resource that contains useful material of economic benefit (gold, silver, copper, iron, glass, aluminum, copper and precious metals such as silver, gold, platinum, and palladium and lead, cadmium, mercury, etc. However, at the same time presence of heavy metals (As, Cd, Pb, Hg, etc.) and other toxic substances such as polychlorinated biphenyls (PCBs), chlorinated chemicals, etc. may pose risk to health and environment during handling and recovery operations. E-waste is a problem of increasing proportions especially when crude methods are adopted for the recovery of useful components from E-waste. Thus, there is a need to encourage the recycling of all useful and valuable materials from e-waste so as to conserve the ever depleting natural resources. The electronic component is increasingly made from recycled materials, for example for making new LCDs, more than 50% of iodine is sourced by recycling used LCDs. The E-waste thus presents a scenario of urban mining for recovery of ferrous/non-ferrous rare earth metals and precious metal in addition to plastics and glass. However, the presence of hazardous and toxic materials in the component of e-waste necessitates environmentally sound management of e-waste including collection and recycling/reforming in an environmentally sound manner.

- The Don'ts of Electronic Waste Recycling:**
- Don't dump the discarded Electronic Equipment in open or in any Land Fill Site as the same will result in contaminating the Soil and the groundwater.
  - Don't dispose of the discarded Electronic Equipment in household bins or Municipal Bins
  - Don't sell or give your discarded Electronic Equipments to any Trash Dealer or Kabadiwala
  - Recycling Electronic equipment helps to save natural fire resources and also reduces the environmental and health risks associated with improper handling/disposal of the Electronic Waste
  - Minimize our impact on the earth and protect the environment for future generations return your discarded Electronic Equipment here to save recycling.

**Why proper handling and management of e-waste is required?**  
According to UNEP, the electrical and electronic equipment (EEE) are valuable materials and hazardous/toxic substances in their components. The electronic products and electrical equipment after their useful life may not cause any harm if it is stored safely in household storerooms. However, if the E-waste is opened-up and its components are made for the retrieval of useful components or material in an unscientific manner, if the material is disposed of open, then it may cause health risks and damage to the environment. E-waste can be considered as a resource that contains useful material of economic benefit (gold, silver, copper, iron, glass, aluminum, copper and precious metals such as silver, gold, platinum, and palladium and lead, cadmium, mercury, etc. However, at the same time presence of heavy metals (As, Cd, Pb, Hg, etc.) and other toxic substances such as polychlorinated biphenyls (PCBs), chlorinated chemicals, etc. may pose risk to health and environment during handling and recovery operations. E-waste is a problem of increasing proportions especially when crude methods are adopted for the recovery of useful components from E-waste. Thus, there is a need to encourage the recycling of all useful and valuable materials from e-waste so as to conserve the ever depleting natural resources. The electronic component is increasingly made from recycled materials, for example for making new LCDs, more than 50% of iodine is sourced by recycling used LCDs. The E-waste thus presents a scenario of urban mining for recovery of ferrous/non-ferrous rare earth metals and precious metal in addition to plastics and glass. However, the presence of hazardous and toxic materials in the component of e-waste necessitates environmentally sound management of e-waste including collection and recycling/reforming in an environmentally sound manner.

**Management and Effect on sustainable future:**  
Sustainable development as defined by Brundtland Commission is "development that meets the needs of the present without compromising the ability of future generations to meet their own needs. The e-waste since a long time had been seen as an easy and cheap source of metals. However, due to the lack of proper consideration for such a source of metals as well as proper methods of recycling in India, we sent our e-waste to the improper channel and thereby participated in degrading the environment. Moreover, through the extraction of metals we did not have waste at least forty percent of the precious metals and simultaneously caused damage to our environment. If we got the proper way to extract metals through proper channels of recycling then we can achieve the goal of the extraction of metals in a better way to save our environment. However, if today while selling off our material to the improper channel we will not think about our sustainable future then it is for sure that the coming generations will be facing crisis of the metals.

**Disposal of the complete unit**

- Wipe the complete unit with soft cloth twisted dry.
- Wipe with neutral detergent if too dirty.
- Do not wash it directly by water.
- Do not store water in the tub for long period. Discharge the water immediately after each using.
- Pull off the power plug and hang up the power cord.
- Hang up the drain hose. Wipe off the water drops on the surface and inside the tub with clean soft cloth.
- Open the cover of the wash tub and the inner/outer cover of the spin tub for some time (about one hour), then close them.

**TROUBLE-SHOOTING GUIDE**

**If the laundries fall to the outer side of the spin tub**

If the laundries fall to the outer side of the spin tub, please take them out immediately.

**When the remained water is frozen**

- Prevent the freezing (be sure to discharge the water completely after using)
- After complete draining, set the " WASH SELECTOR" at "STRONG" or "STANDARD". If it is set at "DRAIN", it will be rather difficult for the frozen water to melt.
- When the water is frozen  
Pour hot water below 50°C into the wash tub to soak it completely. Then turn the pulsator with hands gently. Please confirm the drainage can work normally before next using.

**Phenomena**

**The reason**

The machine does not act.	<ul style="list-style-type: none"> <li>Is there power failure?</li> <li>Is the power plug loose?</li> <li>Is the pulsator twisted by foreign materials?</li> </ul>
The draining does not work.	<ul style="list-style-type: none"> <li>Is the drain hose put down?</li> <li>Is the drain hose frozen?</li> <li>Is the drain hose blocked by foreign material?</li> <li>Are there laundries falling to the outer side of the spin tub?</li> </ul>
There's abnormal sound during washing	<ul style="list-style-type: none"> <li>Are there hair pin, coins or metal items brought inside the tub?</li> </ul>
There's abnormal sound and violent vibration during spinning.	<ul style="list-style-type: none"> <li>Is the machine slanting?</li> <li>Is the spinner cap pressed evenly?</li> <li>Are there laundries falling to the outer side of the spin tub?</li> <li>Are the laundries in spin tub too much?</li> </ul>
There may be some water flowing out of the drain hose in the first use of the machine.	<ul style="list-style-type: none"> <li>It is the water remained in the factory inspection of performance.</li> </ul>

**ENERGY SAVING GUIDE**

To enter into the Energy Saving Mode follow below guide:

- Select Standard on WASH SELECTOR Knob.
- Put the Water Level Selector to Maximum Level until water flow from drain hose.
- Follow below cycle time for obtaining Energy Saving Mode.

For Models: HTW70-1187B/TN, HTW70-1187BON	Standard Program			
Process	Wash	Spin	Rinse	Spin
Cycle Time	12	-	3	2+2

For Models: HTW75-178BK, HTW75-178, HTW75-1169, HTW75-178BBK	Standard Program			
Process	Wash	Spin	Rinse	Spin
Cycle Time	10	1+1	2	3+3

For Models: HTW70-178N, HTW70-178BKN, HTW70-178FWN, HTW70-178BKN	Standard Program			
Process	Wash	Spin	Rinse	Spin
Cycle Time	9	-	2	6+6

For Models: HTW75-1169FW, HTW75-1169FL	Standard Program			
Process	Wash	Spin	Rinse	Spin
Cycle Time	15	-	2	5+5

For Models: HTW90-178FL, HTW100-178BK, HTW100-178BKN, HTW110-178FL, HTW110-178LBK	Standard Program			
Process	Wash	Spin	Rinse	Spin
Cycle Time	15	-	4	5+5

For Models: HTW90-1159, HTW90-1159FL	Standard Program			
Process	Wash	Spin	Rinse	Spin
Cycle Time	15	-	5	5+5

For Models: HTW80-178, HTW80-186, HTW80-1169FL, HTW85-1159, HTW85-178BK, HTW85-186, HTW85-186BBK, HTW85-178BKN, HTW90-178, HTW90-186, HTW85-178FL, HTW85-178PBK	Standard Program			
Process	Wash	Spin	Rinse	Spin
Cycle Time	15	2+2	5	3+3

For Models: HTW85-178, HTW85-186S, HTW85-178BK, HTW85-178FW,	Standard Program			
Process	Wash	Spin	Rinse	Spin
Cycle Time	20	-	4	3+3

For Models: HTW95-178, HTW95-186S, HTW95-178FW	Standard Program			
Process	Wash	Spin	Rinse	Spin
Cycle Time	20	-	4	5+5

For Models: HTW80-1159, HTW80-1159N, HTW80-1159BT, HTW80-1159FW, HTW80-1159FL, HTW80-1128BT	Standard Program			
Process	Wash	Spin	Rinse	Spin
Cycle Time	20	-	5	5+5

**NOTE**

\* Under test conditions. When tested according to standards IEC 60456, 2010 & BEE schedule 12 (Revision-3)  
 \*\* Actual performance of machine will depend on how the appliance is being used.  
 \*\*\* For best washing result we recommend to mix the detergent powder in warm water and pour directly into the before putting clothes in (Reduced Detergent Load)  
 (If there's breakdown, please pull off the power plug before checking.) The following phenomena are not breakdown sometimes. Please confirm again before sending it to repair. If there are real breakdowns, please come to the special maintenance department or after-sale service department of our company. Do not repair it by yourself.

- Please read this manual carefully before using washing machine.
- Retain it for future reference.

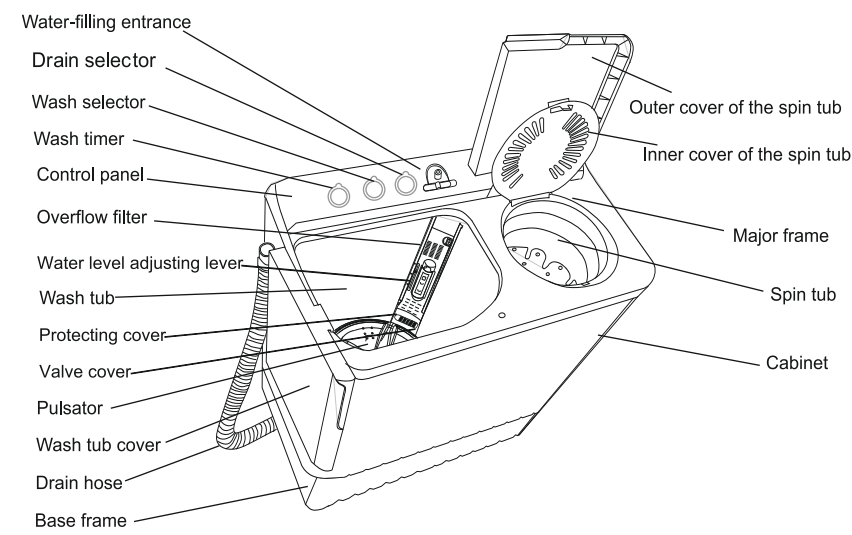
**BRAND INTRODUCTION / 01**  
**PRODUCTS / 02**

NAME OF PARTS	02
SAFETY PRECAUTIONS	03
INSTALLATION AND ADJUSTMENT	05
USAGE OF DRAIN HOSE	05
PREPARATION BEFORE WASHING	07
THE MUST IN WASHING	08
USAGE OF DETERGENT	08
WASHING SEQUENCE	09
MIDWAY SPINNING	10
DISPOSAL AFTER WASHING	11
TROUBLE SHOOTING GUIDE	13
PACKING LIST	15
SPECIFICATION	15
E-WASTE GUIDELINE	16
WARRANTY CARD	18

## 01 BRAND INTRODUCTION

**Haier Group**—  
 Established in 1984, Haier Group is a world-leading provider of solutions to beautiful life. Haier has topped Euromonitor's World Home Appliance Brands and its subsidiary Haier Smart Home Co., Ltd. is among the Fortune Global 500 Companies. Thank you for purchasing Haier product.

## 02 NAME OF PARTS



Reference Machine Snap for all SA Model

Notes: All illustrations in this manual are given for reference only. Your products and accessories may show differences from these illustrations due to our continuous improvement.

## MEANING AND DESCRIPTION OF THE SYMBOLS

	Contents marked with that symbol are related to the safety of the product and the personal safety of the users. Please operate in strict conformity to the contents, otherwise it may cause damage of the machine or endanger the personal safety of the user.
	Contents marked with that symbol are actions forbidden to perform. Performing of those actions may result in damage of the machine or endanger the personal safety of the user.

- Please check if the power receptacle has good earthing condition before using to guarantee your safety.

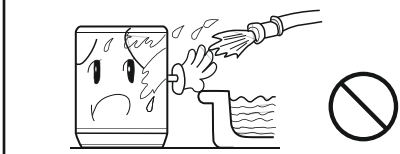
## 03 SAFETY PRECAUTION

Please insert the power cord into special receptacle with rated voltage. Be sure to use single-phase three pins receptacle. The earthing terminal of the receptacle must be earthed reliably. If possible, please adopt electric leakage protector.

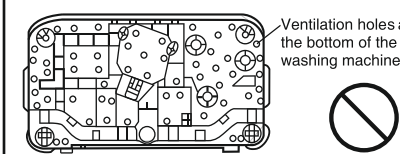
When the machine is being used normally, please put the power plug at the location easily to be inserted and extracted by hand. Be sure to pull the plug off when there's power failure, or the machine is being moved, cleaned or when it is idle.

If the power cord is bad, to avoid risk it is required to replace it by the technicians of our special shop or the after-sale service department. Keep the pin of the power plug clean.

Do not put the machine at damp place like the bathroom. Never wash it with water. Do not place wet laundries on the control panel.



In case the washing machine is installed on ground with carpet, do not block the ventilation holes with carpet.



Do not let the machine share one receptacle with other electric appliances. If the power plug is damaged, or the plugging into the receptacle is loose, do not use the plug any more.

\*Motor used in machine is having Thermal Overload protection. So, in case of excessive heating, motor might trip and stop for cooling. In such case, it is suggested to wait till the temperature goes down before starting.

Do not use water hotter than 50°C.

Do not wash water-proof laundries like raincoat, bike covers etc. to avoid abnormal vibrations in spinning.



Do not wash water-proof laundries like raincoat, bike covers etc. to avoid abnormal vibrations in spinning.



Do not let the machine share one receptacle with other electric appliances. If the power plug is damaged, or the plugging into the receptacle is loose, do not use the plug any more.

\*Motor used in machine is having Thermal Overload protection. So, in case of excessive heating, motor might trip and stop for cooling. In such case, it is suggested to wait till the temperature goes down before starting.

Do not put hands into the running machine. It is dangerous even if the rotation is slow. Take special care of children.



Do not decompose, repair or alter the machine by yourself.



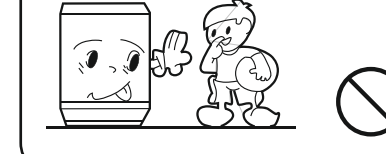
Do not put any hot or heavy items (such as the kettle with hot water) on the washing machine.



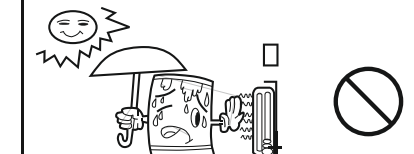
Do not wash laundries with volatile materials (such as thinner, petrol etc.).



Handicapped or children shall use the machine in close supervision.



Keep the machine away from direct sunlight and heat source like heater.



- Please put down the drain hose before washing, and connect the water inlet pipe properly.
- It is suggested to use foamless washing powder.
- Please don't use the washer in the environment below 0°C. If the washer is below 0°C, the washer's water inlet system and draining system will be frozen, that will damage the whole machine. If the washer has below 0°C, please ensure that the washer is placed under the room temperature for 2-4 hours before using.
- To protect your laundry and washing machine, please take out all coins, buttons, keys, hairpins and other foreign materials from the clothes before washing.
- Objects left in the pockets may damage clothing or cause the drain hose to clog. After washing put bucket of clean water in wash side and rotate drain selector 4-6 times when draining. By doing so any obstructed foreign particle will drain off.
- Do not store water in tub for long time. Immediately empty the tub after washing. And be sure the drain pipe not bend

## How to change the direction of the drain hose

- Figure 1 indicates the ex factory installation position of the drain hose.

Extend the drain hose from the side of spin tub

- Take off the drain hose from the hanging hole of the cabinet. Pull the drain hose fixing hook outwards gently to take out the drain hose from the two fixing hooks. (As per figure 2)

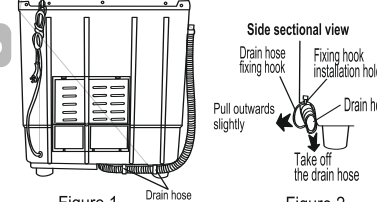


Figure 1 Drain hose hanging hook

- Rotate the drain hose fixing hook for 90° to take it out from the installation hole (As per Figure 3).

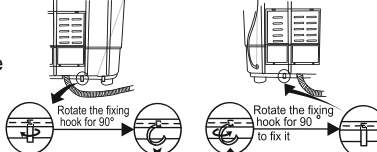


Figure 2 Pull outwards slightly

- Install the two drain hose fixing hooks taken out into the installation hole at the other side of the base frame (to aim at the installation hole accurately you can lean the washing machine forward slightly). Then rotate for 90° (As per Figure 4).

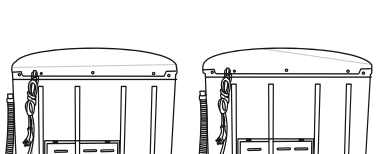


Figure 3 Rotate the fixing hook for 90°

- Pull the fixing hook outwards slightly. Inlay the drain hose into the fixing hooks reliably along the groove at spin tub side, and make it extend towards spin tub side.

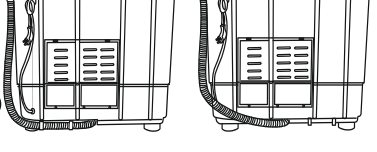


Figure 4 Insert the fixing hook into the installation hole upwards

- Then hang the drain hose into the hanging hole at the spin tub side. (As per Figure 5).

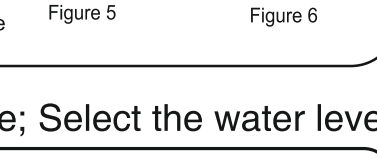
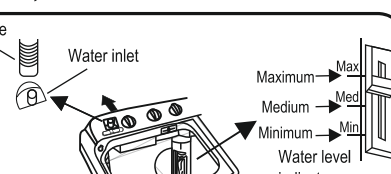


Figure 5 Extend the drain hose from the rear side

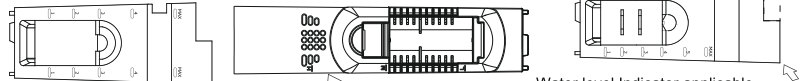
## Install the water inlet hose; Select the water level

- Insert the water inlet hose into the Water inlet on the control panel directly (pull it out to dismantle it)

- Fill the water according to the quantity of the laundries.
- Set the water level adjusting lever to needed line.\*



Water level Indicator applicable for below series HTW65-187 Series, HTW90-1159, HTW100-178 Series, HTW90-1128, HTW95-178, HTW95-186S



Water level Indicator applicable for below series HTW75-1159 Series, HTW80-1128 Series, HTW80-1159 Series, HTW85-178 Series, HTW75-1169 Series, HTW75-1187 Series, HTW75-1188 Series, HTW85-180-1159 Series, HTW85-186 Series, HTW85-178 Series, HTW90-178 Series, HTW95-178 Series, HTW95-178 Series, HTW110-178 Series

## 07 PREPARATION BEFORE WASHING



## Preparation before washing:

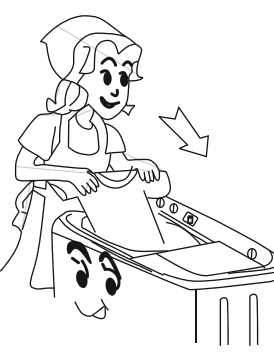
1. Connect the water inlet hose.
2. Confirm that the washing machine is earthed reliably. Then insert the power plug into the receptacle. Do not connect the earth terminal to the gas pipe and tap water pipe.
3. Put down the drain hose.
4. Install the washing machine on the horizontal surface for proper working. Failing to do so may result into vibrations and abnormal noise.

## Pay attention to followings before washing the laundries

Check if the laundries has any special requirement for washing. (fabric should be marked machine wash)	Clear the pocket. Take out the coins, keys, hairpins etc.	Tie the long strips; fasten the buttons; close zippers.	The quantity of the laundries shall not be too large. Stretch and loosen the laundries before putting them in the tub.	When the pulsator is running, the buttons of the laundries may cause noise. For the sake of discretion, please wash the laundries with buttons separately (along with laundry washing bag).
--	---	---	--	---

- a. Check if the laundries are applicable for washing in machine.
- b. Divide the laundries that are not colorfast from other laundries.
- c. Soak those laundries which absorb water with difficulty, by hand.
- d. For those laundries with heavy soil, please first remove the dirt like mud or dust. For the parts with heavy soil, please apply detergent on them in advance, which can make it easier to remove the soil.
- e. For those laundries that may get lint ball and those with long fur, turn it over before putting in machine.
- f. Do not put the laundries polluted by chemicals into the washing machine directly.

## 08 THE MUST IN WASHING



- The capacity of washing and spinning of the machine refer to the largest weight of the standard laundries under dry condition that can be washed or spinned in one time. Laundry quantity in one washing cycle shall be lower than the rated capacity.

- The thickness, size, type of the cloth will influence the actual washing capacity. It is suitable to put in reasonable amount of laundries and the laundries can be turned round in washing for one time washing.

- Do not select "Maximum" water level for laundries less than 1.0kg, so as to avoid splashing of water.

## 08 USAGE OF THE DETERGENT

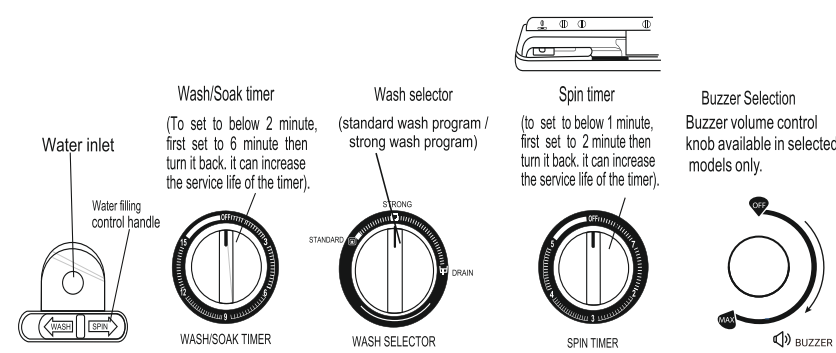
## How to use the washing powder

- Direct dissolve in washing machine:
  1. Fill small quantity of water.
  2. Put washing powder, run for 30 seconds to dissolve it completely.
  3. Put in the laundries. Select suitable water level.
- The instant dissolving of the washing powder.
  1. Prepare warm water of 30°C and a container.
  2. Add the powder while stirring to fully dissolve it.
- The powder is more prone to pollute the laundries than the detergent. Therefore please use it with proper quantity.
- Dosage of different washing powder is different. Please refer to the instruction of the washing powder for the detail dosage.

## How to use the whitener

- Fill water to decided level. Dilute the whitener with water. Pour it slowly into the container.
- Avoid using whitener on laundries with color or pattern as they are prone to lose color.
- The whitener shall not touch the laundries directly.
- For powder whitener, please dissolve it before using.

## 09 WASHING SEQUENCE



## WASH PROCEDURE

## Wash

1. Water fill selection
  - (a) Set fill selection to 'Wash side'. (Figure 1)
  - (b) Adjust the water level as per the marked instructions.
2. Fill water and add dissolved powder detergent until water reaches a suitable level. (Figure 2) Begin to wash to dispense detergent uniformly.
3. Put in the wash load, and supplement water as necessary.
4. Wash selector knob
  - Select the washing program according to the laundries. (Figure 3)
5. Select the washing time
  - Select the washing time according to the laundries. (Figure 4)
6. After washing, the buzzer will ring. (As per selected models) Set the "WASH SELECTOR" at "DRAIN". (Figure 5)

Note: Drain operation is separate from wash selector, in selected models only.

## 05 INSTALLATION AND ADJUSTMENT

Please install and adjust the machine according to the requirement of the manual. It is very important for your safety and for operating the machine correctly.

## 05 USAGE OF DRAIN HOSE

The drainage shall be smooth with the drain hose.

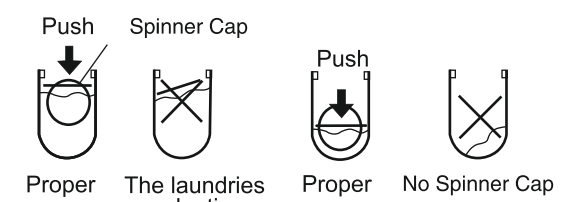
1. The height of the drain hose shall be less than 10cm, or the drainage will not be smooth enough and cause incomplete drainage.
2. Do not tramp or press the drain hose.
3. If the drain hose is too long, cut it at mid point. To make smooth drainage, cut the front end of the hose slantingly.
4. If extra drain hose is needed, please make separate purchase. The inner diameter of the extra hose shall not be less than 30mm, and the length shall not exceed 1.5m.
5. If the extra hose is too long, cut it either at point A or B.

## 10 MIDWAY SPINNING

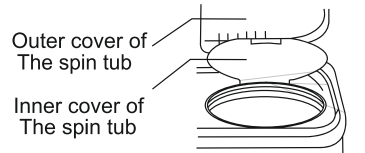
## MIDWAY SPINNING

## Midway spinning

1. Put the laundries into the spin tub evenly and smoothly.
2. Spin
  - (a) Put the Spinner Cap in properly. Please put in the Spinner Cap properly even if the laundries quantity is small.



- (b) Close the inner and outer cover of the spin tub.



3. Spin for 1-2 minutes.

3. Run the foam-removing spinning.
  - (a) Open the outer cover of the spin tub.
  - (b) Set the water-filling selector control rod at the "SPIN" side. Fill water for about 1 minute. If the water quantity filled is too large, the water may flow out from the wash tub side. Please twist the water tab to limit the water filling.
  - (c) Close the outer cover of the spin tub. Spin for 1-2 minutes.

Applicable for 187/1187/1128/1159/1169/186 Series

WASH INLET SELECTOR SPIN

\* For selected models only