

Haier

User Manual

HW70-BD12636GNZP



0020506943GP

"Why proper handling and management of e-waste .":

The electrical and electronic equipment (EEE) have valuable materials and hazardous/toxics substances in their components. The electronic products and electrical equipment after their useful life may not cause any harm if it is stored safely in households/stores. However, if the E-waste is opened-up and attempts are made for retrieval of useful components or material in an un-scientific manner or if the material is disposed in open, then it may cause health risks and damage to environment. E-waste can be considered as a resource that contains useful material of economic benefit for recovery of plastics, iron, glass, aluminum, copper and precious metals such as silver, gold, platinum, and palladium and lead, cadmium, mercury etc. However, at the same time presence of heavy metals (As, Cd, Hg, Pb etc.) and other toxic substances such as polychlorinated biphenyls (PCBs), etched chemicals, etc. may pose risk to health and environment during handling and recovery operations. E-waste is a problem of increasing proportions especially when crude methods are adopted for recovery of useful components from E-waste.

Thus, there is a need to encourage OUR SELF for recycling of all useful and valuable material from e-waste so as to conserve the ever depleting natural resources. Electronic component are increasingly made from recycled materials, for example for making new LCDs, more than 50% of indium is sourced by recycling used LCDs. The E-waste thus presents a scenario of urban mining for recovery of ferrous/non-ferrous/ rare earth metal and precious metal in addition to plastics and glass. However, presence of hazardous and toxic substances in the component of e-waste necessitates environmentally sound management of e-waste including collection and recycling/treatment in an environmentally sound manner.

"Management and Effect on sustainable future -"

Sustainable development as defined by Brundtland Commission is "development that meets the needs of the present without compromising the ability of future generations to meet their own needs."

The e-waste since a long time had been seen as an easy and cheapest source of metals. However due to lack of proper consideration for such source of metals as well as proper methods of recycling in India, we sent our e-waste to the improper channel/scrap vendor and thereby participated in degrading the environment. Moreover, through this improper method of extraction of metals we will date had wasted approximately 40% of the precious metals and simultaneously caused damage to our environment. If we opt the proper way to extract metals through proper channel/recycling then we can achieve approximately 90% of extraction rate of our metals as well as a better way to save our environment. However, if today while selling off our material to improper channel we will not think about our sustainable future then it is for sure that the coming generations will be facing crisis of the metals.

Customer responsibility

- a) consumers shall ensure that there end of life product/e-waste is channelized through collection center or dealer of authorized producer or dismantler or recycler or through the designated take back service provider of the producer to authorized dismantler or recycler;
 - b) consumers shall ensure that such end-of-life electrical and electronic equipment are not admixed with e-waste containing radioactive material;
- Electronic Waste Recycling:

Do's

- Handover/Donate/Give the discarded Electronic Equipment's only at the authorized collection centers.
- Drop the discarded Electronic Equipment's only in the bins meant for the Electronic Waste.
- Ask the retailer about the Take Back schemes.
- Consult the authorized service centers as to whether the Electronic Equipment can be repaired or not, before discarding the same.
- Tell your neighbors and other persons about the hazards of improper disposal or handling of improper recycling of the Electronic Waste.
- If the unwanted Electronic Equipment still work or can be repaired then consider donating them.
- To minimize our impact on the earth and to protect the environment for future generations return your discarded Electronic Equipment's here for safe recycling .

Don'ts

- Don't dump the discarded Electronic Equipment's in open or in any Land Fill Site as the same will result in contaminating the Soil and the ground water.
- Don't dispose of the discarded Electronic Equipment's in household bins or Municipal Bins.
- Don't sell or give your discarded Electronic Equipment's to any Trash Dealer or Kabadiwala/unauthorized vendor.
- Don't try to open up the product by yourself for repair or other purposes.
- Don't mix the electronic waste into household waste stream.
- Don't keep any replaced spare part(s) from the product in exposed area. Always handover such article to service personal so that same can be recycled.

Haier Appliances (India) Pvt. Ltd.
Building No. 1, Okhla Industrial Estate,
Phase III, New Delhi - 110020
or Call us at

Toll Free No. (24X7) : 1800-419-9999, 1800-102-9999

HW70-BD12636GNZP	
Power source	220V - 240V~/50 Hz
Max. working current (A)	10
Water pressure (MPa)	0.001≤P ≤1
Washing programs	16
Max power (W)	2000
Dimensions (HxDxW mm)	850 x 460 x 595
Net weight (kg)	65

Thanks for purchasing a Haier Product

Please read these instructions carefully before using this appliance. The instructions contain important information which will help you get the best out of the appliance and ensure safe and proper installation, use and maintenance.

Keep this manual in a convenient place so you can always refer to it for the safe and proper use of the appliance.

If you sell the appliance, give it away, or leave it behind when you move house, make sure you also pass on this manual so that the new owner can become familiar with the appliance and safety warnings.

Accessories

Check the accessories and literature in accordance with this list:



1x User Manual



1x Drain hose bracket



1x Inlet hose assembly



5x Blanking Plugs

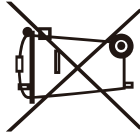


1x Warranty Card



1x Bottom Cover

E-waste Guideline Manual



Introduction

We at Haier in our continuous efforts of making a future better adopted eco-friendly practices and procedures. We acting towards our social, moral and statutory responsibility towards the environment and sustainable development have pledged to recycle electronic items, such as TV/LED/LCD, refrigerator, washing machine, etc. that are no longer useful. Haier is stepping towards a more conservation and optimization of resources and thereby making environment safer. We request you to donate or utilize take back scheme for your electronic good when it reaches its end-of-life, so that it can be reuse-recycle and reinvent.

"Hazard of e-waste on environment and Human Health.":

The informal method of recycling extends health hazards. Primary and secondary exposure to toxic metals, such as lead, results in diseases like Heart, Liver, Lung & Spleen Damage. Open-air burning of electronic waste, used to retrieve valuable components such as gold, not only causes damages to environment but also to human health. Incineration from burning e-waste creates fine particulate matter, which is linked to heart and respiratory disease. However the above said is only example and the informal way to recycle causes numerous health hazards. During such informal recycling no caution or care are kept to either secure the environment or human health. The informal method of recycling extended environment hazards too. For example when different e-waste is burnt to extract metals from it, toxic chemicals are released in to the air, damaging the atmosphere. Such informal ways creates noise, water and air pollution.

E WASTE TOXIC COMPONENT & THEIR DAMAGE TO HUMAN HEALTH

Toxic Materials	Birth Defects	Brain Damage	Heart, Liver, Lung & Spleen Damage	Kidney Damage	Nervous/ Reproductive System Damage	Skeletal System Damage
Barium	✓	X	X	✓	✓	✓
Cadmium	X	✓	X	X	X	X
Lead	X	X	✓	X	X	✓
Lithium	X	X	X	X	✓	✓
Mercury	X	X	X	X	✓	✓
Nickel	X	✓	X	X	X	✓
Palladium	X	X	X	X	✓	✓
Rhodium	✓	✓	X	✓	✓	✓
Silver	X	✓	X	X	X	✓

Without safe recycling, most of these toxic components will end in land fill-poisoning soil and water

Cautions 3
 Before Use 5
 Functions 8
 Maintenance 16
 Trouble-Shooting 19
 Technical data 20

Legend



Warning! Important safety information!

General information and tips

Trouble-Shooting

Trouble-Shooting

Problem	Causes	Solutions
Washing machine fails to operate.	<ul style="list-style-type: none"> ✗ Poor connection to the power supply. ✗ Power failure. ✗ The washer door is not properly closed. ✗ Machine has not been switched on. 	<ul style="list-style-type: none"> ✓ Check connection to the power supply. ✓ Check the power supply. ✓ Close the washer door properly. ✓ Make sure the machine is switched on.
Washing machine cannot be filled with water.	<ul style="list-style-type: none"> ✗ The "Start/Pause" button is not pressed. ✗ Water tap is not turned on. ✗ Water pressure is less than 0.001 MPa. ✗ The inlet hose is kinked. ✗ Water supply failure. ✗ The program selector is not properly set. ✗ The washer door is not properly closed. ✗ The inlet hose filter is blocked. 	<ul style="list-style-type: none"> ✓ Press the "Start/Pause" button. ✓ Turn on the water tap. ✓ Check water pressure. ✓ Check the inlet hose. ✓ Ensure the water supply. ✓ Set the program selector properly. ✓ Close the washer door properly. ✓ Unblock the inlet hose filter.
Machine is draining while being filled.	<ul style="list-style-type: none"> ✗ The height of the drain hose is below 80 cm. ✗ The drain hose is in water. 	<ul style="list-style-type: none"> ✓ Install drain hose within 80-100 cm of height. ✓ Make sure the drain hose is not in water.
Drainage failure.	<ul style="list-style-type: none"> ✗ Drain hose is blocked. ✗ Drain hose end is higher than 100 cm above the floor level. ✗ The filter is blocked. 	<ul style="list-style-type: none"> ✓ Unblock the drain hose. ✓ Make sure the drain hose end is lower than 100 cm above floor level. ✓ Unblock the filter.
Strong vibration while spinning.	<ul style="list-style-type: none"> ✗ Not all transportation bolts have been removed. ✗ Washing machine is located on an uneven surface or is not level. ✗ Machine load is not correct. 	<ul style="list-style-type: none"> ✓ Remove all transportation bolts. ✓ Make sure the washing machine is on an even surface and levelled. ✓ Reduce amount of laundry in the drum.
Operation stops before completing wash cycle.	<ul style="list-style-type: none"> ✗ Water or electricity failure. 	<ul style="list-style-type: none"> ✓ Check the power supply or water supply.
Operation stops for a period of time.	<ul style="list-style-type: none"> ✗ Washing machine gives an error message. ✗ Washing machine is in soaking cycle? 	<ul style="list-style-type: none"> ✓ Check display codes. ✓ Press the rinse hold button or the Start/pause button again to cancel it.
Excessive foam in the drum, which is spilled to the distribution drawer.	<ul style="list-style-type: none"> ✗ The detergent is not a low-foaming type or for manual wash. ✗ Excessive use of detergent. 	<ul style="list-style-type: none"> ✓ Check if your detergent is appropriate. ✓ Reduce amount of detergent in the distribution drawer.
Automatic adjustment of the washing time.	<ul style="list-style-type: none"> ✗ The washing program duration will be adjusted 	<ul style="list-style-type: none"> ✓ This is normal and doesn't affect the functionality.
Spinning fails	<ul style="list-style-type: none"> ✗ Unbalance of the laundry 	<ul style="list-style-type: none"> ✓ Add clothes or run a spinning program again.


If after checking the trouble-shooting part, the problem is not solved. Please check the Warranty Card included in the product.

Maintenance

Display Codes

Display Codes and Special functions

Codes	Causes	Solutions
E1	Drainage error, water not emptied within 6 minutes.	Clean the filter and check the drain hose for blockage. If error still exists, please contact the maintenance personnel.
E2	Door is not properly shut.	Shut the door properly, and then press the Start/Pause button.
F3	Temperature sensor not properly connected or damaged.	Contact the maintenance personnel.
F4	Heater error (Appears at the end of a cycle).	Contact the maintenance personnel.
E4	Water level not reached after 30 minutes	Make sure that tap is turned on, and water pressure is normal.
	The height of the drain hose is below 80 cm.	If problem still exists, please contact the maintenance personnel.
	The drain hose is in water.	Install drain hose within 80-100 cm of height.
		Make sure the drain hose is not in water.
F7	Motor Error	Contact the maintenance personnel.
E8	Water exceeds protective level.	Contact the maintenance personnel.
FA	Water level sensor error.	Contact the maintenance personnel.
FC1	Abnormal communication error display board and motor	Contact the maintenance personnel.
FC2	Abnormal communication error display board and power board	Contact the maintenance personnel.
End	End of wash cycle.	
19:30	Status information: Preset time for delayed operation.	
1:25	The remaining time is 1 hour 25 minutes.	
UNb	Washing machine has an unbalanced load protection function. When unbalanced weight is greater than allowable maximum, the washing machine will not spin and will run at a speed to avoid abnormal vibration and noise	check and balance the laundry load in the drum. Also reduce the load if too heavy. Restart with a spin program

 During the spin process, if too much foam is generated, in order to protect the motor, the washing machine will eliminate the foam automatically; the motor will stop and the drain pump will drain the water continuously for 90 seconds. If it happens more than 3 times, the motor will stop until the end of cycle without spinning.

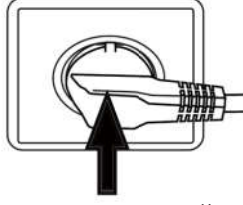
Cautions

Before switching the appliance on for the first time

This appliance can be used by children aged from 8 years and above and persons with reduced physical, sensory or mental capabilities or lack of experience and knowledge if they have been given supervision or instruction concerning use of the appliance in a safe way and understand the hazards involved. Children shall not play with the appliance. Cleaning and user maintenance shall not be made by children without supervision. Children of less than 3 years should be kept away unless continuously supervised.

Do...

- ✓ Make sure that the transport bolts are removed.
- ✓ Use a separate earthed socket for the power supply.
- ✓ Make sure that the plug is always accessible.
- ✓ Hold the plug and not the electric cable when unplugging the power supply.
- ✓ Make sure that the fuses in the power circuit are rated for 13A.
- ✓ Keep it away from heat sources and direct sunlight to prevent plastic and rubber components from aging.
- ✓ Make sure that the power cable is not caught under or in the appliance and avoid damage to the power cable.
- ✓ Check that hose joints and connections are firm and with no water leaking. If joints are not firm there will be leakage, turn off the water supply and refix it. Do not use the washing machine until the hoses are totally fixed.



Do not...

- ✗ Touch or use the appliance when barefoot or with wet or damp hands or feet.
- ✗ Use flammable detergent or dry cleaning agent.
- ✗ Use any flammable sprays in close vicinity to the appliance.
- ✗ Remove or insert the plug in presence of flammable gas.
- ✗ Allow children or infirm persons to play with the appliance or packing materials.
- ✗ Install the appliance outdoors in a damp place, or in an area which may be prone to water leaks such as under or near a sink unit. In the event of a water leak allow the machine to dry naturally.
- ✗ Place the washing machine directly on a carpet, or close to a wall or furniture.

During daily use of the appliance

Do...

- ✓ Pull up zips and fix loose threads to prevent the items from being entangled. If necessary, put small items into a small bag or net.

Cautions

- ✓ Turn off the machine after each wash program and switch it off at the mains to save electricity, and for safety. Wipe clean the lower part of the porthole.
- ✓ Keep the door slightly open when the washing machine is not in use to prevent formation of odours.
- ✓ Let the power cord be replaced by the manufacturer, his service agent or other accordingly qualified people, in case it is damaged.

Do not...

- ✗ Touch the washer door during the washing process, it gets hot.
- ✗ Place heavy objects or sources of heat or damp on top of the appliance.
- ✗ Hot wash foam rubber or sponge-like materials
- ✗ Open the detergent distribution drawer during the wash cycle.
- ✗ Force the washer door to open, the door is fitted with a self-lock device and will open shortly after the washing procedure is ended.
- ✗ Open the washer door if the water level is visibly over the porthole.
- ✗ Cover the washing machine with a plastic cover so that the washing machine can not dry out when not in use

Saving Tips

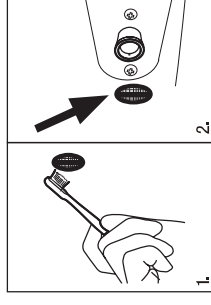
- ⓘ Achieve the best use of energy, water, detergent and time by using the recommended maximum load size
- ⓘ Do not exceed the detergent dosages indicated in the manufacturer's instructions.
- ⓘ Save energy and time by selecting a high spin speed to reduce the water content in laundry before using a tumble dryer.
- ⓘ Choose the correct washing temperature. Modern detergents can wash with very good result already in lower temperature than 60°C. Only use higher temperature than 60°C for very dirty laundry.

Maintenance

Water inlet valve and inlet valve filter

To prevent blockage of water supply by solid substances like lime clean regularly the inlet valve filter.

- ▶ Unplug the power cord and turn off the water supply.
- ▶ Unscrew the water inlet hose at the back (Fig.2).
- ▶ Remove the filters and flush them with water and a brush (Fig. 1).
- ▶ Insert the filter and install the inlet hose.



Moving the machine

If the machine is to be moved to a distant location, replace the transportation bolts removed before installation to prevent damage as shown below.

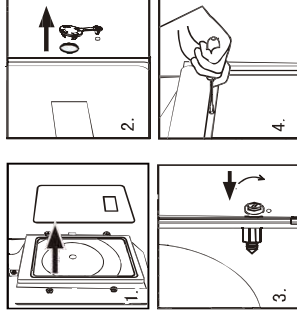
Remove the back cover.

Remove the blanking plugs.

Insert the plastic spacers and the transportation bolts.

Tighten the bolts with a spanner.

Replace the back cover.



Long periods of disuse

If the washing machine is left idle for a long period, pull out the electrical plug(1) and turn off the water supply(2). Open the washer door to prevent formation of moisture and odors. Leave the door open while not used.

Before next usage check carefully power cord, water inlet and drain hose. Make sure everything is properly installed and without leakage.

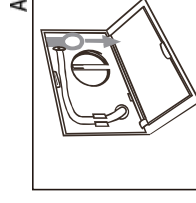
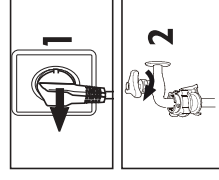
In case of power failure

The current programme and its setting will be saved. When power supply is restored operation will be resumed.

If a power failure cuts an operating wash programme door opening is mechanically blocked. To get out any laundry water level should not be seen in the glass porthole of the door. - Danger of burns!

Water level has to be lowered as described in " Pump filter ". Not till then pull lever beneath service flap until door is unlocked by a gentle click. Afterwards refix all parts.

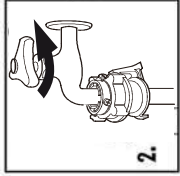
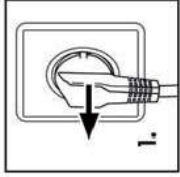
- ⓘ Power-off memory function: In case of abrupt power failure or the need to cut off the power during a program cycle, the present settings will be saved and the preset operation will resume when the power is on again.



Cleaning and Care

After washing

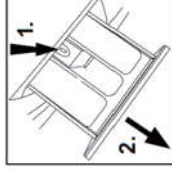
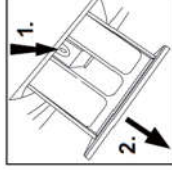
Turn off the water supply and remove the electrical plug after each wash. Open the washer door to prevent formation of moisture and odors. If the washing machine is left idle for a long period, drain the water in the machine and replace the drain hose.



Cleaning the detergent drawer

Take always care there are no detergent residues. Clean the drawer regularly :

1. Pull out the drawer until it stops.
2. Press the release button and remove the drawer.
3. Flush the drawer with water until it is clean and insert the drawer back in the appliance.



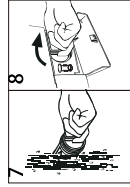
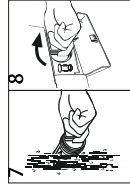
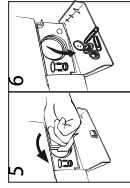
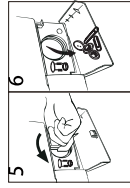
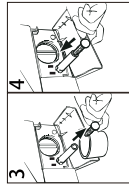
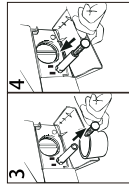
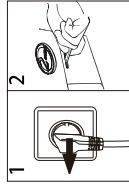
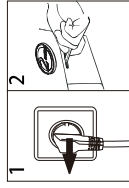
Cleaning the machine

Unplug the machine during cleaning and maintenance. Use a soft cloth dampened with soap liquid to clean the machine case and rubber components. Do not use organic chemicals or corrosive solvents.

Cleaning the filter

Clean the filter once a month:

1. Turn off and unplug the machine.(Fig.1).
2. Open service flap. You can either use a coin or a screwdriver.(Fig.2).
3. Provide a flat container to catch water. There could be big amounts! (Fig.3).
4. Pull the drainhose out and hold its end above the container.(Fig.3).
5. Take the sealing plug out of the drainhose.(Fig.3).
6. After complete drainage close drainhose. and push it back into the machine.(Fig.4).
7. Unscrew and remove counter clockwise the pump.(Fig.5).
8. Remove contaminants and dirt (Fig.6).

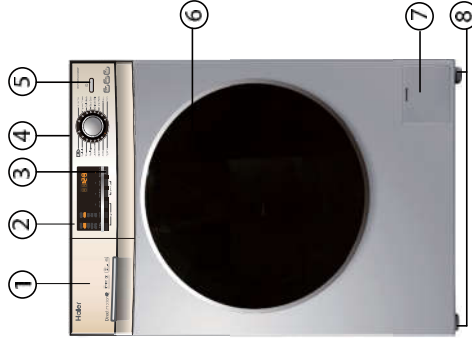


9. Clean carefully pump filter, e.g. using running water (Fig.7)
10. Refix the filter and tighten it clockwise to prevent leaks(Fig.8).
11. Close service flap.

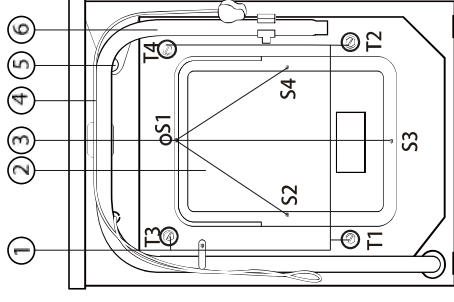
- ⚠ The filter must be in place, or it may lead to leakage.
- ⚠ Place a container under the drain pump filter, to collect any excess water that may come out of the drain pump

Description

This diagram may be slightly different from the layout of the washing machine you have just purchased.



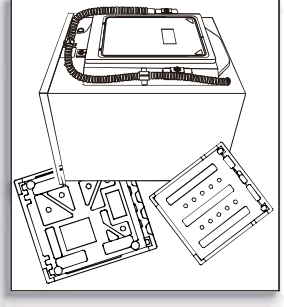
- 1 Detergent/Softener drawer
- 2 Panel
- 3 Start/Pause
- 4 Worktop
- 5 Power
- 6 Washer door
- 7 Filter cover
- 8 Adjustable feet



- 1 Transportation bolts (T1-T4)
- 2 Back cover
- 3 Back cover screws (S1-S4)
- 4 Power cord
- 5 Water inlet valve
- 6 Drain hose

Preparing the machine

Remove all the packing materials to prevent unsteadiness, including the polystyrene base. Upon opening the package, water drops may be seen on the plastic bag and the porthole. This is normal phenomenon resulting from water tests in the factory.

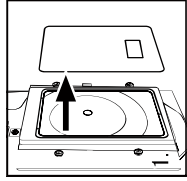
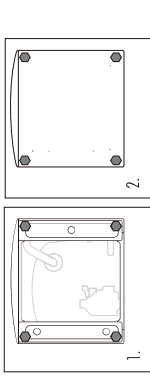


Before Use

Installation **Warning.** The washing machine is very heavy. Use safe lifting techniques Install the bottom cover

When opening the package, you will find a bottom cover.

1. Put down the machine backwards, remove the four adjustable feet (figure 1.)
2. Put on the bottom cover. then install the feet which go across the four holes on the bottom cover (figure 2.) finally lift the machine upright.



Dismantle the transportation bolts

The transportation bolts are designed for clamping anti-vibration components inside of the washing machine during the transportation process.

- ✓ Remove the back cover.
- ✓ Remove the four bolts on the rear side and take out the plastic spacers from within the machine.
- ✓ Replace the back cover.
- ✓ Fill the holes left by the bolts with blanking plugs.

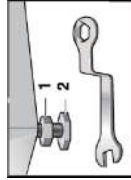
Note:

- ⚠ When you replace the back cover, the convex must face to outside, and you have to insert the back cover from the two gaps as shown in fig.5.
- ⚠ Keep the transportation bolts and plastic spacers in a safe place for later use.

Adjusting the feet and locking nut

There are adjustable feet under the bottom of the washing machine. Before use, they should be adjusted so that the machine is level. This will minimize vibrations and thus noise during use. It will also reduce wear and tear. We recommend using a spirit level to level the appliance. The floor should be as stable and flat as possible.

1. Loosen the lock nut (1) by using a wrench.
2. Adjust the height by turning the foot (2)
3. Tighten the lock nut (1) against the bottom of the cabinet.



Functions

Care Chart

Machine Wash, COLD	Hand Wash	Tumble Dry, NO HEAT	Do Not Tumble Dry	Iron, Steam or Dry, with LOW HEAT
Machine Wash, WARM	Do Not Wash	Tumble Dry, LOW HEAT	Line Dry	Iron, Steam or Dry, with MEDIUM HEAT
Machine Wash, HOT	Bleach as needed Any bleach, like Clorox®, may be safely used	Tumble Dry, MEDIUM	Drip Dry	Iron, Steam or Dry, with HIGH HEAT
Permanent Press	Non-chlorine Bleach as needed Use only a color-safe bleach, like Clorox 2®	Tumble Dry, HIGH	Dry Flat	Do Not Iron
Machine Wash, WARM	Do Not Bleach No bleach product should be used including detergents with bleach - or follow bleach package test procedures to test for bleach safety.	Tumble Dry, Permanent Press, NO HEAT	Don't tumble dry	Dry Clean May appear with additional letters and/or lines. Take this item to a professional drycleaner
Machine Wash, HOT	Wool Mark	Tumble Dry, Permanent Press, LOW HEAT	Dry on clothes hanger	Dry cleaning with any solvent
Machine Wash, COLD		Tumble Dry, Gentle Cycle, NO HEAT	Tumble dry, Medium heat	Dry cleaning with peroxide
Machine Wash, HOT		Tumble Dry, Gentle Cycle, LOW HEAT	Don't tumble dry	
Gentle Cycle		Tumble Dry, Gentle Cycle, MEDIUM		

Load Reference

Material	Made of	Load in grams
Bed Sheet	Cotton	Approximately 800
Blanket	Wool	Approximately 3000
Blended fabric clothes	/	Approximately 800
Jackets	Cotton	Approximately 800
Jeans	/	Approximately 800
Overalls	Cotton	Approximately 950
Ladies Pyjamas	/	Approximately 200
Shirts	/	Approximately 300
Socks	Blended fabrics	Approximately 50
T-Shirts	Cotton	Approximately 300
Underwear	Blended fabrics	Approximately 70

Selecting program

To get the best washing results, an appropriate washing program should be selected according to the laundry type. Please turn the program knob to select the right program.



Selecting function

Select the required options. (Refer to the "Control panel" pages 8,9 and 10)

Setting washing temperature

Press and hold down the temperature button until the desired temperature is selected.



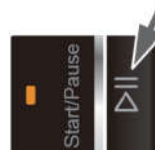
Setting spin speed

Press and hold down the speed button until the desired speed is selected. See "Operational functions" on the "Control panel" pages (8 and 10) for selecting temperature and spin speed. It is advisable to select the recommended value.



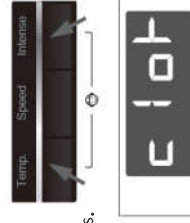
Washing

Press the Start/Pause button. The washing machine will operate according to the preset programs. The washing machine will stop operation automatically when a washing cycle ends. The "End" sign will appear on the display. Open the washer door and take out the laundry. To cancel a program. Press the "Start/Pause" button, then switch off the power and the program is automatically cancelled. Turn the program selector again to choose another program.



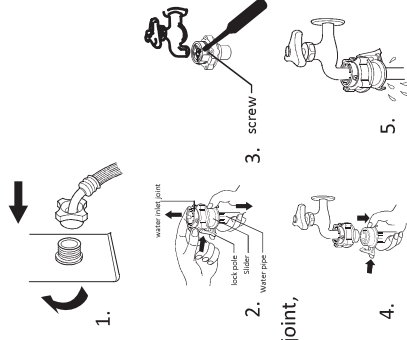
Child lock

Control panel lock function: Press the "Temp." and the "Intense" buttons simultaneously for 3 seconds after starting a program. When the function be activated, it will display "clck". It can no longer be changed by operating buttons. To unlock press the "Temp." and the "Intense" buttons again for 3 seconds.



Inlet Hose

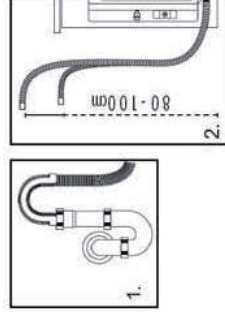
- ✓ Connect the nut on the inlet hose to the connector on the water valve (picture 1).
- ✓ a. Hold down the lower end of the lock pole, Then hold the inlet pipe, press on the slider, and remove the water inlet joint (picture 2).
- b. Loosen the four screws of the water inlet joint and fit the water inlet joint on the faucet, Make sure the screws is in place and tighten it (picture 3).
- c. Press the slider and insert the water pipe into the water inlet joint, hang the water inlet joint with a lock pole and release the slider until a "snap" is heard (picture 4 and 5).



- ⚠ Use the hose-set supplied with the appliance. Old hose-sets should not be reused.

Drain Hose

- ✓ Use the drain hose bracket to keep the end of the drain hose retained and prevents the overflow of water.
- ✓ The height of the drainage outlet must be 80cm-100 cm. Fix the drain hose to the clip at the back of the washing machine to prevent it from dropping off.

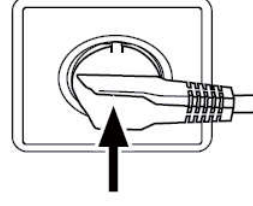


- ⚠ The drain hose should not be submerged in water and should be securely fixed and leak-free. If the drain hose is placed on the ground or if the pipe is at a height of less than 80cm, the washing machine will continuously drain while being filled (self-siphoning). Drain hose is not to be extended. If necessary, please consult a serviceman or plumber.

Connecting to Power Supply

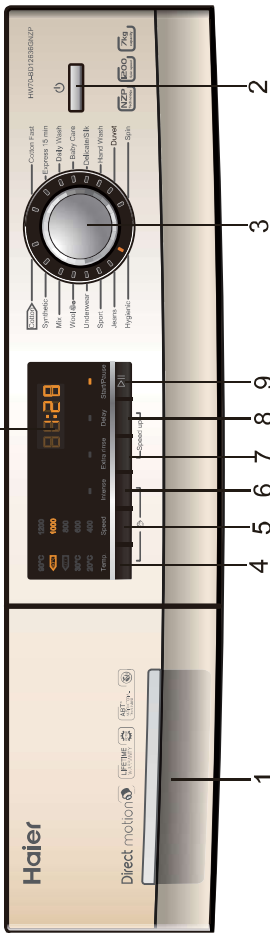
Before connecting to the power supply, check:

- ✓ The socket is adequate for the maximum power of the washing machine (For safety, fuses in the power circuit should be rated for no less than 13A).
- ✓ The voltage should meet the requirement on the rating plate.
- ✓ The power outlet should be capable of accepting the washing machine plug.
- ✓ Connect the machine to an earthed socket outlet.




Functions

Control Panel



1. Detergent/Softener Drawer
2. Power Button
3. Program Selector
4. Wash Temp
5. Spin Speed
6. Intense button
7. Extra Rinse
8. Delay
9. Start/Pause Button
10. LED Display

Operational Functions

Nº	Function	Explication
1	Detergent /Softener drawer	Open the drawer, three compartments can be seen: Compartment 1: Prewash detergent(for prewash mode). Compartment 2: Detergent for programs 1 to 15. Compartment 3: Softener, conditioning agent. The recommendation on the type of detergents is suitable for the various washing temperatures, please refer to the manual of detergent.
2	Power Button	Press this button to switch on the washing machine. Press it again to switch it off.Press this button gently for 2 seconds to switch off the machine as buttons are soft touch sensitive.
3	Program Selector	By turning the knob clockwise/counterclockwise, the required program can be selected. There are 16 programs available. After a program is selected, the corresponding light will illuminate.
4	Wash Temp	Touch this button lightly, the washing temperature will be displayed on the indicator. Select a temperature according to the type of laundry.Note: If there is no indicator light displayed, this means cold wash.
5	Spin Speed	Touch this button lightly to select the desired speed. When a speed is set, it will be displayed on the indicator.Note: if there is no indicator light displayed, this means no spinning.  Different water temperatures and spinning speeds can be set for different clothing. Wash using the default settings if there is no special requirement.
6	Intense button	If the laundry is very dirty, press this button before starting the program. When the button is pressed, the washing time increases.

Functions

Loading the appliance





Open the washer door put in the laundry piece by piece. Close the door tightly.

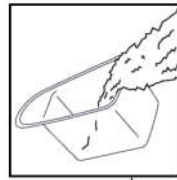
When using the washing machine, for the first time let it run unloaded for one program to prevent the laundry from being tainted by oil or dirty water from the washing machine. Before washing you should run the machine, but with detergent, with 60°C program.




Do not overload the washing machine.Note the different maximum load according to programmes.Rule of thumb for maximum load: Keep six inches between load and drum top.Close the door carefully. Make sure that no pieces of laundry are pinched.

Selecting Detergent

The washing efficiency and the performance is determined by the quality of detergent used. Special non-foaming detergent produces good washing results. Use specific detergents for synthetic and woollen goods. Do not use dry cleaning agents such as trichloroethylene and similar products.

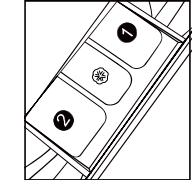
-  Do not add more detergent than needed; otherwise, it may cause the situations as following and washing machine malfunction impacting washing machine's life.
-  Due to the increasing foam, the rinse time will be longer than normal;
-  The foam may overflow from the detergent drawer because of the increasing pressure of the foam;
-  It may remain foam without cleaning out after the final spinning cycle.






-  Recommendation:
 Clean the detergent drawer once a week.
-  Please follow the dosage recommendation on the powder or liquid detergent package.

Adding Detergent

Slide out the detergent drawer and put the required detergent and softening agent into the corresponding compartments. Push back the drawer gently. (Refer to the instructions on the drawer)



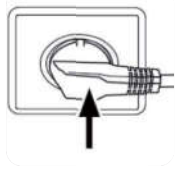
-  Use liquid detergent according to the instructions on its package. Do not use liquid detergent if "Delay" is selected.
-  Do not overuse softener; otherwise, it will damage the artificial fibers.
-  In extremely low water pressure(<0.01Mpa), it is requested to insert the detergent powder into the drum directly.

Washing Methods

⚠ This washing machine is for domestic use only. If the machine is used for commercial purpose the guarantee will not be valid anymore. Do not use it for purposes other than that for which it was designed. Follow the instructions given on the label of each garment and wash only machine-washable garments.

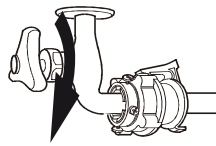
Power Supply

Connect the washing machine to the power supply (220V to 240V~/50Hz).



Water Connection

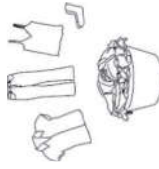
Turn on the tap. The water must be clean and clear.



ⓘ Before use, check for leaks in the joints between the tap and the inlet hose by turning on the tap.

Preparing the Laundry

Sort out clothes according to fabric (cotton, synthetics, wool or silk) and to how dirty they are.



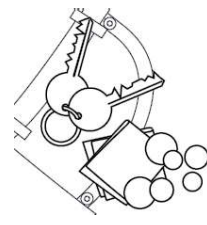
Separate white clothes from colored ones. Wash them first by hand to check if they fade or run.

Garments without hems, underwear, and finely woven textile such as fine curtains are to be put into wash bag (it is better not to wash them in a washing machine).

Close zippers and hooks, make sure the buttons are sewn on tightly and place small items such as socks, belts, bras, etc. in the wash bag.

Unfold large pieces of fabric such as bed sheets, bedspreads, etc.

Turn shirts inside out.



ⓘ Attention: Small parts (like buttons, etc) may lead to repair work which user has to pay and can cause damage in the machine.

Empty pockets (keys, coins, etc.) and remove the harder decorative objects (e.g. brooches).

7 Extra Rinse
Press this button, the washing machine will perform additional rinses. Press the button once to select one additional rinse. The display will show "P-1". Press the button repeatedly and the screen will display "P-2" or "P-3", indicating two or three additional selected rinses. The "extra rinse light" is activated and flashes during the performance. "P-1/2/3" is displayed alternating with the remaining time. The light turns off and the display disappears when the extra rinse ends.

ⓘ You can select if you require this function when programs 1-15 are used.

8 Delay
Touch this button lightly, the washing machine will start operation after a period of time and the corresponding indicator will go on. The range is 0.5-24 hours; each touch of this button increases a half hour. After the button is set, press the Start/Pause button to start countdown of the set time (the time is displayed on the screen until the program ends).

ⓘ The delay time must be longer than the program time otherwise the washing machine will start the wash program directly.

9 Start/Pause Button
When the washing machine is connected to the power socket and a program is selected, lightly touch this button to start operation. During a wash cycle, touch it lightly, operation will stop and the digits on the screen start blinking. Touch it again to resume operation. To cancel a wash program during a wash cycle, touch this button, when the digits on the screen start blinking, press the Power switch, the program will be cancelled.

10 LED Display
Information as remaining wash time and error messages will be shown here.

ⓘ After a wash program is started the display will go on and the remaining wash time decreases. As the water pressure and temperature may differ, the remaining time may be adjusted accordingly. When the laundry is not balanced during spinning, the time may be automatically prolonged.

To cancel audible alarm

Alarm sound can be cancelled if it is required (not recommended) Switch on the washing machine and turn the program selector to spin cycle, then press the "Delay" and "Extra rinse" button, hold on for 3 seconds. The message "BEEP OFF" will be displayed on the screen, indicating that the alarm sound has been cancelled.

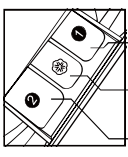
To reinstate audible alarm


Switch on the washing machine and turn the program selector to spin cycle, then press the "Delay" and "Extra rinse" button, hold on for 3 seconds. The "BEEP ON" message will be displayed on the screen, indicating that the alarm sound has been reinstated.

Speed Up Function

Press "Extra rinse" and "Delay" at the same time for 3 seconds, then the display shows "SPEED UP" (displayed sequentially) to confirm this function is activated. To cancel press the 2 buttons again to cancel the "SPEED UP" function.

Program Modes



P programme	Temp. Max	Preset	Fibre Type	Preset Spin Speed	Speed up
1 Cotton	90°C	30°C	Cotton /Synth	1200 rpm	✓
2 Synthetic	60°C	30°C	Chemical fibre fabrics	1200 rpm	✓
3 Mix	60°C	30°C	Cotton /Synth	1000 rpm	✓
4 Wool 	40°C	---	Woolen fabrics	800 rpm	✗
5 Under wear	60°C	40°C	Underwear	1000 rpm	✓
6 Sport	40°C	20°C	Sports Wear	800 rpm	✗
7 Jeans	60°C	30°C	Jeans	1000 rpm	✓
8 Hygienic	90°C	90°C	Cotton	1000 rpm	✓
9 Cotton Fast	40°C	40°C	Cotton	1000 rpm	✗
10 Express 15 min	40°C	---	Cotton /Synth	1000 rpm	✗
11 Daily Wash	60°C	30°C	Cotton fabrics	1000 rpm	✓
12 Baby Care	90°C	40°C	Cotton /Synth	1000 rpm	✓
13 Delicate/Silk	30°C	30°C	Silk	800 rpm	✗
14 Hand Wash	30°C	30°C	Cotton fabrics	600 rpm	✗
15 Duvet	40°C	40°C	Cotton	800 rpm	✓
16 Spin	---	---	---	1000 rpm	✗



Yes Optional No

Choose the best Detergent

	Universal	Color	Delicate	Special	Softener
Cotton	L/P	L/P	-	-	O
Synthetic	L/P	L/P	L	-	O
Mix	L/P	L/P	-	-	O
Wool	-	-	-	L	O
Underwear	L/P	L/P	-	-	O
Sport	-	-	-	L	O
Jeans	L/P	L/P	L	-	O
Hygienic	L/P	L/P	L	-	O
Express 15 min	L	L	-	-	O
Daily Wash	L/P	L/P	L	-	O
Baby Care	L/P	L/P	-	-	O
Delicate/Silk	-	-	L	-	O
Hand Wash	-	-	-	L	O
Cotton Fast	L	L	-	-	O
Duvet Spin	-	-	L	L	O

Detergent	Temperature range in °C
Liquid	cold - 60
Powder	40 - 90
Optional	---
No	---

If using liquid detergent, it is not recommended to activate the delayed start. The amount of detergent required please refer to the detergent packaging.
Info: Modern washing detergents work at low temperatures.

-  In extremely low water pressure (<0.01Mpa), it is requested to insert the detergent powder into the drum directly. Don't put detergent powder into the drawer, otherwise, it will be solified in the drawer.
-  It is better to use less or free suds detergent powder.