

Quick Start Guide

Smart Motion Sensor

Setup Video

Scan QR code or visit
<https://www.tp-link.com/support/setup-video/#smart-sensors>



! Before You Start

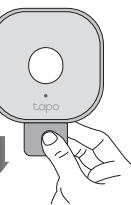
A Tapo Hub is required. Make sure your Tapo Hub is successfully added via the Tapo app.



1 Power Up Your Sensor

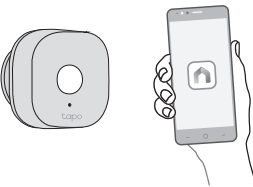
Remove the battery insulation tab to power up your sensor. The LED should blink.

Note: If the LED is not blinking, refer to the reverse side for reset instructions.



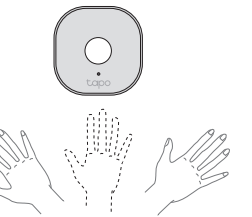
2 Set Up Your Sensor

Open the Tapo app and tap the ⊕ button. Select **Sensors** and then your model. Follow the app instructions to complete setup.



3 Test Your Sensor

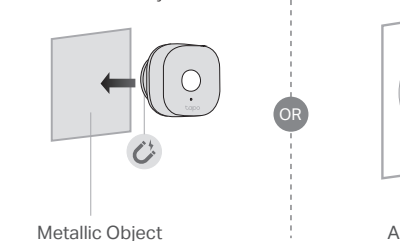
Take your sensor to the preferred location and wave your hand in front of the sensor to test it. The Tapo app should show if the sensor is triggered.



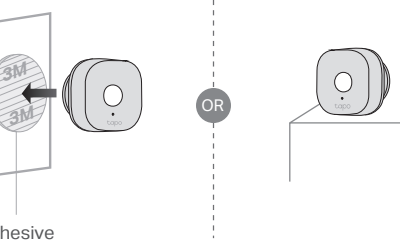
4 Place Your Sensor

The installation height should not be higher than 6.56 ft (2 m).

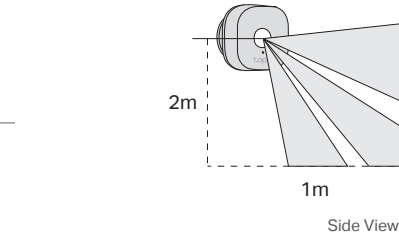
Option 1: Magnetically attach to metallic objects



Option 2: Stick to a clean wall with included adhesive

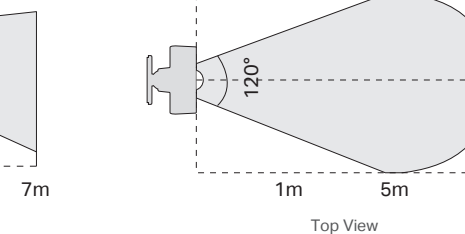
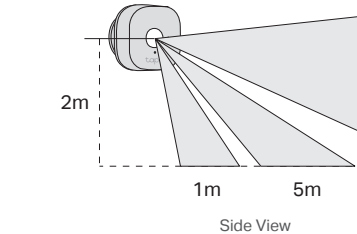


Option 3: Place it on a shelf or table



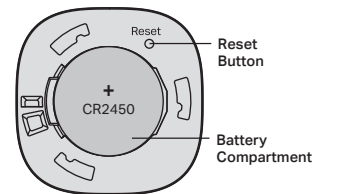
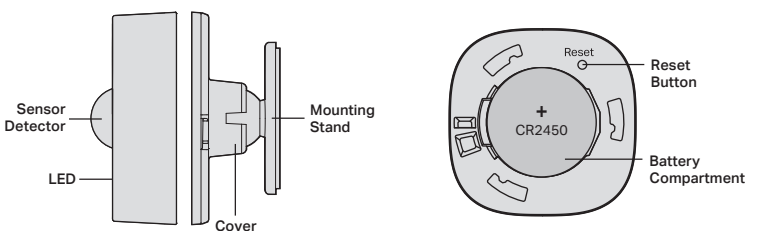
! Detection Area

The sensor should be aligned with the detection area and placed as close as possible to the edge of a table or cabinet.



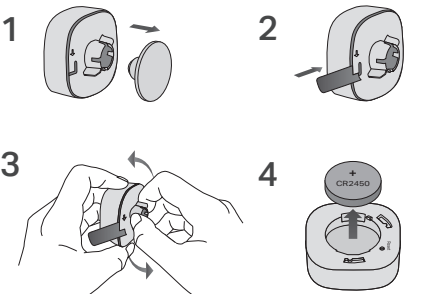
Meet Your Motion Sensor

The Motion Sensor detects movement in a certain area and triggers different actions in response. This makes your home safer and smarter.

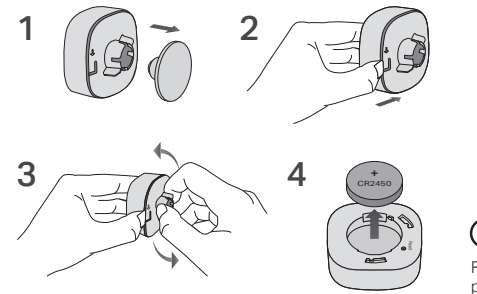


How to replace the battery

Option 1: With a Shim

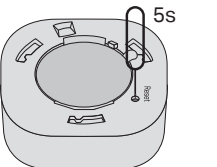


Option 2: By Hand



How to reset your sensor

Use a pin to press and hold the Reset button for 5 seconds until the front LED starts blinking.



Support

For technical support, user guides, warranty and more, please visit <https://www.tapo.com/support/>

⚠ WARNING

- **INGESTION HAZARD:** This product contains a button cell or coin battery.
- **DEATH** or serious injury can occur if ingested.
- A swallowed button cell or coin battery can cause **Internal Chemical Burns** in as little as 2 hours.
- **KEEP** new and used batteries **OUT OF REACH** of **CHILDREN**
- **Seek immediate medical attention** if a battery is suspected to be swallowed or inserted inside any part of the body.
- If the battery compartment does not close securely, stop using the product and keep it away from children.



Warning! This product contains a button cell or coin battery. Avoid ingestion hazard. Death or serious injury can occur if ingested.

CAUTION!

Avoid replacement of a battery with an incorrect type that can defeat a safeguard.
Avoid disposal of a battery into fire or a hot oven, or mechanically crushing or cutting of a battery, that can result in an explosion.
Do not leave a battery in an extremely high temperature surrounding environment that can result in an explosion or the leakage of flammable liquid or gas; Do not leave a battery subjected to extremely low air pressure that may result in an explosion or the leakage of flammable liquid or gas.

CAUTION!

Risk of explosion if the battery is replaced by an incorrect type.

a) Remove and immediately recycle or dispose of used batteries according to local regulations and keep away from children. Do NOT dispose of batteries in household trash or incinerate.
b) Even used batteries may cause severe injury or death.
c) Call a local poison control center for treatment information.
d) This product includes button/coin cell batteries of type CR2450.
e) The nominal voltage of the button/coin cell batteries is +3V.
f) Non-rechargeable batteries are not to be recharged.
g) Do not force discharge, recharge, disassemble, heat above 60°C/140°F or incinerate. Doing so may result in injury due to venting, leakage or explosion resulting in chemical burns.
Ensure the batteries are installed correctly according to polarity (+ and -).
Do not mix old and new batteries, different brands or types of batteries, such as alkaline, carbon-zinc, or rechargeable batteries.
Remove and immediately recycle or dispose of batteries from equipment not used for an extended period of time according to local regulations.

Always completely secure the battery compartment. If the battery compartment does not close securely, stop using the product, remove the batteries, and keep them away from children.

Safety Information
Keep the device away from water, fire, humidity or hot environments.
Do not attempt to disassemble, repair, or modify the device. If you need service, please contact us.
Do not use the device where wireless devices are not allowed.
Please read and follow the above safety information when operating the device. We cannot guarantee that no accidents or damage will occur due to improper use of the device. Please use this product with care and operate at your own risk.

For EU/UK Region:
Operating Frequency / Nominal Operating Frequency / Max Output Power:
863~865MHz / 863.35MHz / 25mW (e.r.p)
863~865MHz / 864.35MHz / 25mW (e.r.p)
868~868.6MHz / 868.35MHz / 25mW (e.r.p)
TP-Link hereby declares that the device is in compliance with the essential requirements and other relevant provisions of directives 2014/53/EU, 2011/65/EU and (EU) 2015/863.
The original EU declaration of conformity may be found at <https://www.tapo.com/en/support/ce/>
TP-Link hereby declares that the device is in compliance with the essential requirements and other relevant provisions of the Radio Equipment Regulations 2017.
The original UK declaration of conformity may be found at <https://www.tapo.com/support/ukca/>



©2024 TP-Link