

SONY®

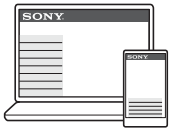
Television

Reference Guide

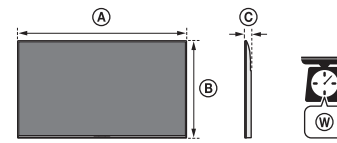
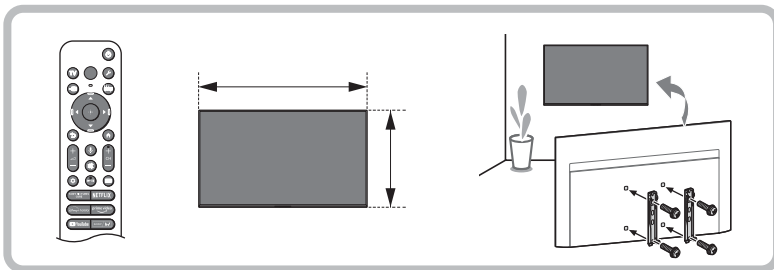
5-057-925-11(1)



K-85S31 / 85S30 / 75S31 / 75S31B / 75S30 / 75S30B / 65S31 / 65S31B
 K-65S30 / 65S30B / 55S31 / 55S31B / 55S30 / 55S30B / 50S31 / 50S30
 K-43S31 / 43S30

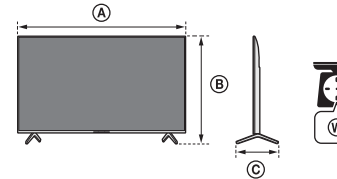


https://rd1.sony.net/help/tv/lga2/h_ga/



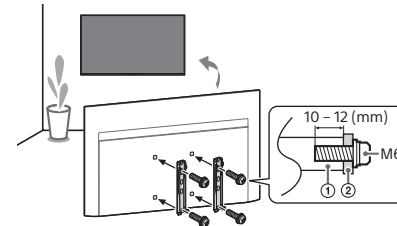
	(mm)*1			(kg)*1
	(A)	(B)	(C)	(W)
K-85S31 / 85S30	1901	1090	73	43.6
K-75S31 / 75S31B / 75S30 / 75S30B	1675	962	73	30.7
K-65S31 / 65S31B / 65S30 / 65S30B	1452	836	72	20.7
K-55S31 / 55S31B / 55S30 / 55S30B	1233	713	72	15.4
K-50S31 / 50S30	1119	649	70	12
K-43S31 / 43S30	964	563	69	9.9

*1 (Approx.)



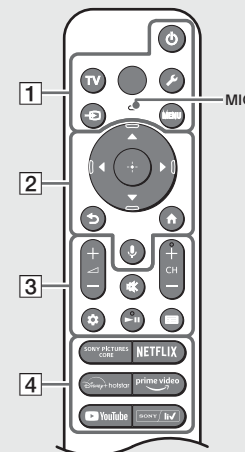
	(mm)*1			(kg)*1
	(A)	(B)	(C)	(W)
K-85S31 / 85S30	1901	1177	456	45.2
K-75S31 / 75S31B / 75S30 / 75S30B	1675	1042	410	32
K-65S31 / 65S31B / 65S30 / 65S30B	1452	909	334	21
K-55S31 / 55S31B / 55S30 / 55S30B	1233	784	334	15.7
K-50S31 / 50S30	1119	714	267	12.2
K-43S31 / 43S30	964	629	266	10.1

*1 (Approx.)



① Wall-Mount Attachment **VS**

② Wall-Mount Bracket



The remote control shape, layout, availability and function of remote control buttons may vary depending on your region/country/TV model/TV settings.

- 1 **⏻ (Power)**
TV: Display TV channel list or switch to input.
⚙️ (Quick settings): Display Quick Settings.
📶 (Input select): Display and select the input source, etc.
MENU (Control menu): Display the Control menu.
- 2 **▲ / ▼ / ◀ / ▶ / ⏪ / ⏩**: On screen menu navigation and selection.
⏪ (Back)
🏠 (Home)
🗣️ (Google Assistant / Microphone): Use Google Assistant*1*2 or voice search*2.
- 3 **🔊 + / - (Volume)**
🔇 (Mute)*3
CH + / - (Channel)
⚙️ (Dashboard): Display Dashboard.
📺
📖 (Guide): Display the digital programme guide of TV or TV box*4.
- 4 **App buttons**

- *1 Only for limited region/country/model/ language.
- *2 Google Assistant or voice search requires an Internet connection.
- *3 Accessibility shortcut is available by pressing and holding 🔇 (Mute).
- *4 [TV box setup] setting is required.

About Manuals

Please retain the manuals for future reference.

Paper manual

Setup Guide (on top of the product) / Reference Guide (this manual) / Safety and Other Information.

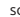
Help Guide (On screen Manual)

- To open it, select [Settings] → [Help and feedback] → [Help] or select [Help] in the Home Menu, if [Help] does not exist, select [See all] → [Help].
- You can refer to the Help Guide with your smartphone (visit website provided on the front cover of Reference Guide).

Read and understand the contents of this manual before operating this product.

Note

- Instructions about "Installing the TV to the Wall" are included within this TV's instruction manual.
- Read the supplied safety documentation for additional safety information.
- Images and illustrations used in the supplied manuals are for reference and may differ from the actual product.
- Setting menus are subject to change without notice due to software updates. For latest information, visit Sony support website.

IMPORTANT - Read the End User Software Licence Agreement before using your Sony product. Using your product indicates your acceptance of the End User Software Licence Agreement. The software licence agreement between you and Sony is available online at Sony website (<https://www.sony.net/tv-software-licenses4/>) or on your product screen. Press  (Quick Settings) on the remote control and select [Settings] → [System] → [About] → [Legal information] → [Notices and licences].

Location of the identification label

Labels for the TV Model No. and Power Supply rating are located on the rear of the TV.

Installing the TV to the Wall

Using the optional Wall-Mount Bracket (not supplied)

This TV's instruction manual only provides the steps to prepare the TV for Wall-Mount installation before it is installed on the wall.

Your TV can be mounted to a wall using a suitable Wall-Mount Bracket (not supplied). If the Table-Top Stand is attached to the TV, the TV may require detaching the Table-Top Stand (models with Table-Top Stand only). Prepare the TV for the Wall-Mount Bracket before making cable connections.

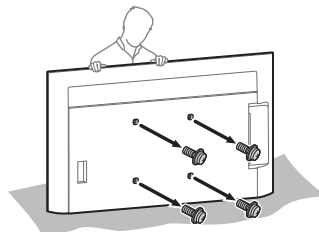
For product protection and safety reasons, Sony strongly recommends that installation of your TV on the wall be performed by qualified professionals. Do not attempt to install it yourself.

- Follow the instruction guide provided with the Wall-Mount Bracket for your model. Sufficient expertise is required in installing this TV, especially to determine the strength of the wall for withstanding the TV's weight.
- The screws for installing the Wall-Mount Bracket to the TV are not supplied.
- Be sure to store the unused screws and Table-Top Stand in a safe place until you are ready to attach the Table-Top Stand (models with Table-Top Stand only). Keep the screws away from small children.

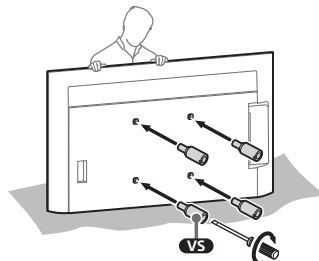
Note

- Read the supplied safety documentation for additional safety information.

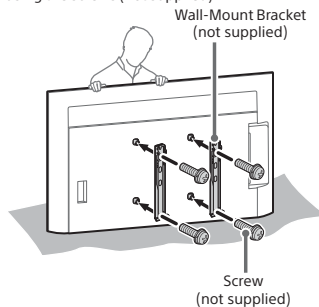
- Remove the screws from the rear of the TV.



- Attach the Wall-Mount Attachment (supplied with the TV) to the rear of the TV (to make it parallel with the wall).



- Attach the Wall-Mount Bracket (not supplied) using the screws (not supplied).



Note

- If using an electric screwdriver, set the torque at approximately 1.5 N·m [15 kgf·cm].
- Be sure to fasten the Wall-Mount Attachment when attaching them to the TV. Use only a flat head screwdriver to install the Wall-Mount Attachment. Use of another tool might result in over torqueing the Wall-Mount Attachment and damaging the TV.
- Be sure the TV is vertical before turning on. To avoid uneven picture uniformity do not power on the TV with the panel facing down.

Troubleshooting

General troubleshooting for issues like: black screen, no sound, frozen picture, TV does not respond, or network is lost, do the following steps.

- Restart your TV by pressing the power button on the remote control for about five seconds. Select [Restart] and TV will restart. If the TV does not recover, try unplugging the AC power cord (mains lead) then press the power button on the TV and release it. Wait for two minutes, and plug in the AC power cord (mains lead). Or, press the power button on the TV for about 40 seconds until the TV turns off.
- Refer to the Help menu shown below.
- Connect your TV to the Internet and perform a software update. Sony recommends you to keep your TV software updated. Software updates provide new features and performance improvements.
- Visit Sony support website (information provided at the end of the supplied safety documentation).

When you plug in the TV, the TV may not be able to turn on for a while even if you press the power button on the remote control or the TV.

It takes time to initialize the system. Wait for about one minute, then operate it again.

The remote control does not function.

- Replace the batteries.

The parental lock password has been forgotten.

- Enter 4357 for the PIN and enter the new PIN.



For more information, refer to the Help Guide. To open it, select [Settings] → [Help and feedback] → [Help] or select [Help] in the Home Menu, if [Help] does not exist, select [See all] → [Help].

Specifications

System

Panel system
LCD (Liquid Crystal Display) Panel, LED Backlight
TV system
Analogue: B/G
Digital: DVB-T/DVB-T2
Satellite: DVB-S/DVB-S2
Colour system
PAL/ SECAM
Channel coverage
Analogue: UHF/VHF/Cable
Digital: UHF/VHF
Satellite: Intermediate Frequency 950-2 150 MHz
Sound output (W)
10 + 10
Wireless technology
Protocol IEEE 802.11a/b/g/n/ac/ax
Bluetooth® Version 5.3

Input/Output jacks

Antenna (aerial)/cable
75 ohm external terminal for RF input
Satellite antenna
Female F Type Connector, 75 ohm
LNB 13 V/18 V & 22 kHz tone
HDMI IN 1/2/3/4 (HDMI IN 3 eARC/ARC)
DIGITAL AUDIO OUT (OPTICAL)
Two channel linear PCM: 48kHz 16bits, Dolby
Audio
USB 1/2
USB 1 (USB 2.0, 500 mA), USB 2 (USB 3.2 Gen 1, 900 mA)
LAN (10BASE-T/100BASE-TX)

Power and others

Power requirements
110 V – 240 V AC, 50/60 Hz

Screen size (measured diagonally) (Approx.) (inches/cm)

K-85S31 / 85S30: 85 / 214.8
K-75S31 / 75S31B / 75S30 / 75S30B: 75 / 189.3
K-65S31 / 65S31B / 65S30 / 65S30B: 65 / 163.9
K-55S31 / 55S31B / 55S30 / 55S30B: 55 / 138.8
K-50S31 / 50S30: 50 / 125.7
K-43S31 / 43S30: 43 / 108.0

Power consumption

Indicated on the rear of the TV
Standby power consumption^{*1*}(W)
0.5
Display resolution (horizontal × vertical) (pixels)
3 840 × 2 160
Output rating
500 mA (for USB 1), 900 mA (for USB 2)

Others

Operating temperature
0 °C – 45 °C

*1 Specified standby power is reached after the TV finishes necessary internal processes.

*2 Standby power consumption will increase when your TV is connected to the network.

Note

- Optional accessories availability depends on countries/region/TV model/stock.
- Design and specifications are subject to change without notice.
- Subscriptions for services and applications may be required and additional terms, conditions and/or charges may apply when using Google Assistant.
- Power consumption will increase when the built-in MIC is enabled as it is always listening.
- Visit Sony website for more information on product specifications.

Trademark Information

- Dolby, Dolby Vision, Dolby Atmos, Dolby Audio, and the double-D symbol are trademarks of Dolby Laboratories Licensing Corporation. Manufactured under license from Dolby Laboratories. Confidential unpublished works. Copyright © 1992-2022 Dolby Laboratories. All rights reserved.
- TUXERA is a registered trademark of Tuxera Inc. in the US and other countries.


VISION · ATMOS

