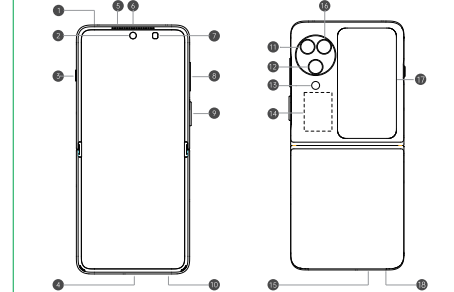


Quick Guide

This user manual provides the product safety information. Before using the phone, please read the Quick Guide carefully.

Greetings from OPPO Mobile

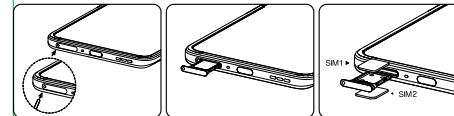
This guide will show you how to use the phone and its important functions. You may also visit OPPO official website to get more information about the phone.



- ① Sub MIC
- ② Front Camera
- ③ Three-stage side button
- ④ USB & Earphone Jack
- ⑤ Upper Speaker
- ⑥ Receiver
- ⑦ Home screen light perception
- ⑧ Volume Key
- ⑨ Power Key & Screen Lock Key
- ⑩ Lower Speaker
- ⑪ Rear wide-angle camera
- ⑫ Rear camera
- ⑬ Secondary screen light sensor & Close to light perception & Flash & Color temperature
- ⑭ NFC
- ⑮ Main MIC
- ⑯ Rear telephoto camera
- ⑰ Secondary screen display area
- ⑱ SIM card tray

Install SIM and Memory card

Please turn off the phone before inserting the card. This product is only compatible with Nano SIM on both slots of the SIM card holder. Inserting non-standard cards can cause damage to phone SIM card holder. Keep SIM Ejector Tool out of reach of children, to prevent accidental ingestion or impalement.



How to Transfer Old Mobile Content to a New Mobile

You can use OPPO Clone Phone to easily transfer photos, videos, music, contacts, messages, apps, etc from your old phone to the new one.

1. If your previous phone was a non-OPPO Android phone, search "OPPO Clone Phone" in the Google Play store and install the app. You can also scan the QR code below to install it. If your previous phone was an OPPO phone, you don't need to install this app. Then run Clone Phone on both phones and follow the on-screen instructions.



<https://iclonephone.coloros.com/download>

2. If your previous phone was an iPhone, run "Clone Phone" on your new phone, and follow the onscreen instructions to migrate your data from your iCloud account.

Performance parameters

Product	CPH2519	
SAR Values	India SAR	1.197W/kg(Head) 0.709W/kg(Body)

Note: The SAR values above are the highest values reported for this device.

Radio Waves Specifications

Radio	Frequency	Max. Output Power	
GSM	850MHz	33.5dBm	
	900MHz	34.5dBm	
	1800MHz	31.1dBm	
	1900MHz	30.8dBm	
WCDMA	Band 1	24.7dBm	
	Band 2	24.3dBm	
	Band 4	24.2dBm	
	Bands 5/6/8/19	25.0dBm	
LTE FDD	Bands 1/3	24.7dBm	
	Bands 2/7	23.8dBm	
	Bands 4/66	24.2dBm	
	Bands 5/26	25.3dBm	
	Bands 8/18	25.0dBm	
	Bands 19/20	25.2dBm	
	Band 28	23.1dBm	
	Bands 12/17	24.8dBm	
	LTE TDD	Bands 38/39/40/41	24.7dBm
	5G NR	n1	25.1dBm
n2		24.2dBm	
n3		24.8dBm	
n7		24.5dBm	
n5/n8/n20		24.9dBm	
n12/n28		24.7dBm	
n38/n40/n41/n77		24.6dBm	
n66		24.3dBm	
n78		26.7dBm	
Bluetooth		2.4-2.4835GHz	13dBm(EIRP)
2.4G Wi-Fi	2.4-2.4835GHz	16.4dBm(EIRP)	
	5.15-5.25GHz	19.5dBm(EIRP)	
5G Wi-Fi	5.25-5.35GHz	19.5dBm(EIRP)	
	5.47-5.725GHz	19.5dBm(EIRP)	
	5.725-5.85GHz	22.5dBm(EIRP)	
NFC	13.56MHz	42dBuA/m @10m	

How to switch system languages

Go to Settings - Additional settings - Keyboard & input method - Manage keyboards - Gboard - Languages - Add keyboard, Add your prefer languages

The device supports: English, Hindi & Nepali, for inputting. The device also supports: Assamese, Bengali(Bangla), Gujarati, Hindi, Kannada, Kashmiri, Konkani, Malayalam, Manipuri(Bangla), Marathi, Nepali, Oriya, Punjabi, Sanskrit, Sindhi(Devanagari), Tamil, Telugu, Urdu, Bodo (Boro), Santhali(OIChiki), Maithili, Dogri, Manipuri (MeeteiMayek), Santhali (Devnagari) and English for readability.

Regulatory

Steps to search Indian Regulatory: Go to Settings>About device>Regulatory.

How to reboot the phone

Press and hold the Power Button and Volume Up Button at the same time until the OPPO boot animation is displayed to reboot the phone.

Standard accessories

You are provided with the following standard accessories:

1 Phone, 1 Charger, 1 USB data cable, 1 Safety Guide, 1 Quick Guide, 1 SIM Ejector Tool, 1 Protective Case.

Your phone contains magnets. Keep it away from credit cards and devices that may be affected by magnets, and at least 15 cm away from implantable medical devices. If you suspect any interference with an implanted medical device, stop using your phone and consult a medical professional or the medical device manufacturer.

Some content may differ from your device depending on the region, service provider, or software version, and is subject to change without prior notice.

Copyright © Guangdong OPPO Mobile Telecommunications Corp., Ltd. 2023. All rights reserved.