

User Manual Micro DC Backup LMU1202

Safety and General Information

Inspect the package contents upon receipt. Notify the carrier and dealer if there is any damage.

- Adhere to all national and local electrical codes.
- This Micro DC Backup is intended for indoor use only.
- Do not open, disassemble, or service the Micro DC Backup.
- Do not crush or puncture the Micro DC Backup.
- Do not operate the Micro DC Backup in contact with fluids.

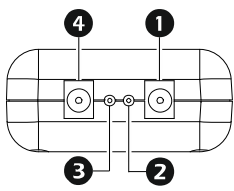
Product Description

Micro DC Backup is a portable, uninterruptible power supply specifically designed for your Wi-Fi routers, ONT/OLT, set top box, intercom and CCTV camera. Micro DC Backup has an intelligent battery management system for a reliable operation and long life.

Package Contents

- Micro DC Backup
- 3 intermediate cables to connect Micro DC Backup to various devices
- User Manual

Product Features

1	Output Port “OUT”	Connect the equipment to Micro DC Backup using intermediate cable.	
2	Red LED	Indicates battery is low.	
3	Green LED	Indicates battery is charging.	
4	Input Port “IN”	Connect the power adapter to Micro DC Backup.	

Installation

⚠ WARNING

RISK OF CHEMICAL HAZARD

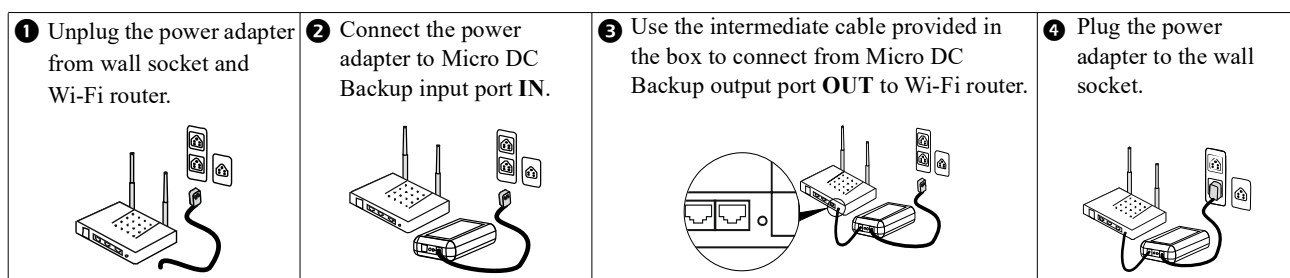
Do not put the Micro DC Backup in trash that is disposed of in landfills.

When disposing the Micro DC Backup, adhere to local laws and regulations.

Failure to follow these instructions can result in death or serious injury.

- Make sure that the voltage rating of power adapter, Wi-Fi router and Micro DC Backup is same. Current rating of power adapter should be < 2 A. Return Micro DC Backup if there is a mismatch in voltage or current.
- Charge the Micro DC Backup once in 30 days if not in use. Equipment voltage must match with Micro DC Backup output voltage specifications. Use specified voltage power adapter (12 V). Do connections as specified.

NOTE: Contact Customer Support if there are defects in the product and the product is within warranty.



Troubleshooting

Symptoms and Probable Cause	Solution
Wi-Fi router is not turning on	Check if the power adapter is connected to the mains input socket correctly.
Green LED is not illuminated after turning on the power adapter	<ul style="list-style-type: none"> • Check if the mains supply is available at input socket and mains supply switch is turned on. • Be sure that input and output connections of Micro DC Backup are correct and not interchanged. • Power adapter is correctly working and supplying 12 V. If not, change the power adapter. • Contact Customer Support.
Low backup time	Do not expect full backup time immediately after installation.
Red LED is illuminated immediately after mains power fail	<ul style="list-style-type: none"> • Be sure that the battery is charged for at least 5 hours. Charging time depends on the current capacity of power adapter. • Current capacity of power adapter is sufficient to charge the Micro DC Backup battery along with connected Wi-Fi router. • Battery has reached its end of life. Contact Customer Support.
Unable to connect equipment to Micro DC Backup	Intermediate cable supplied along with Micro DC Backup is not compatible. Contact Customer Support.

Specifications

Model	LMU1202
Load connection points	1 no.
Maximum load capacity	15 W
Input voltage	12 V
DC load voltage range	9 - 12 V output
Battery (inbuilt Lithium ion)	25 WH
Backup hours (constant power mode)	3.5 hours (0.5 A load); 1.5 hours (1.0 A load); 1 hour (2.0 A load)
Battery life	750 cycles
Charging time	1 hour (typical) NOTE: The charging time depends on the current capacity of power adapter.
International Protection Code	IP20

Customer Support

Toll Free	18001030011/18004194272
E-mail	indiainfo@se.com