

abuse, damage, or to parts which in our judgment are not defective, nor does it extend to irons which have been

tampered with, altered or repaired other than by the manufacturer or its authorised agents.

- This warranty does not cover items damaged by normal wear and tear including chips, scratches, abrasions, discolouring or fading; use of improper voltage and current; negligence, misuse, disassembly and dropping.
- Do not use this appliance near bathtubs, showers, basins or other vessels containing water.
- If the supply cord is damaged, it must be replaced by the manufacturer, its service agent or similarly qualified persons in order to avoid a hazard.

LIABILITY

- This guarantee does not confer any rights other than those expressly set out above.
- Nothing in the guarantee excludes, restricts or otherwise affects your statutory rights.

Dealer / Retailer Stamp

Not required for online purchases



Date of Purchase

dd/mm/yy

REGISTER YOUR PRODUCT

Dear Customer,

Thank you for purchasing an IKONIC product. To activate the warranty on your product scan the QR code or visit our website www.ikonicworld.com/register-a-product. Fill in the details required, and upload your invoice copy given by the retailer at the time of purchase. Registration should be completed within 15 days of the date of purchase of the product. In case you need help write to us on our customer support email provided. You can avail the warranty at any of our authorised retailers. T&C apply.

IKONIC[®]
hairstyling tools & accessories

BLAZE PRODUCT MANUAL



A product by **SSIZ**
INTERNATIONAL

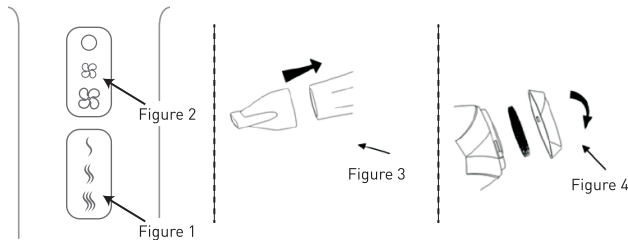
Join us on [f](https://www.facebook.com/myikonic) /myikonic, [ig](https://www.instagram.com/ikonic_professional) ikonic_professional
shop online at www.ikonicworld.com
e: info@ikonicworld.com

HIGHLIGHTED FEATURES

- High Velocity Motor
- Rating: 220V-240V~ 50Hz-60Hz 1800W-2000W
- Superior mute functioning
- 2 heat & 2 speed combinations for flexibility while styling
- 2 air flow nozzles for variable air flow
- Aesthetic ergonomic design
- Built in overheating protection device
- 2.5 meters lengthened cord
- Hang-up Loop for convenient storage

OPERATION INSTRUCTION:

- Firstly, Switch off the circuit charge ("off" location), the wind temperature switch ("cool" location).
- Then connect the matching socket.
- As speed setting shown (Figure 1), Alternative airflow for choice (Figure 2).
- With nozzle (figure 3).
- Please often clean the hair, dust in filter, detach the end cap by an anticlockwise rotation when clean (Figure 4).



IMPORTANT SAFETY INSTRUCTIONS:

When using electrical appliances, especially when children are present, please always follow the basic safety precautions as listed below:

READ ALL INSTRUCTIONS BEFORE USING.
KEEP THE UNIT AWAY FROM WATER.

DANGER:

As for most electrical appliance, electrical parts are electrically live even if the unit is turned off.

For reducing fatal risk by electrocution:

- Always unplug the appliance immediately after using.

- Do not use while bathing/showering.
- Do not place or store the appliance where it can fall or be pulled into a water tub or sink.
- Do not place in or drop into water or other liquid.
- If the appliance falls into water, unplug it immediately.
- Do not reach into water.

WARNING:

To reduce the risk of burns, electrocution, fire or injury to any person:

- User should not leave an appliance unattended when it is plugged in.
- Extra care should be paid when appliance is used by, on, or near children or individuals with certain disabilities.
- Do not use any attachments which are not provided by the manufacturer, Follow all instructions mentioned in this manual when using.
- Never use the appliance when cord/plug is damaged. Also if the appliance does not work properly or is dropped into water/fluid, do not use it or/and return the appliance to a service center for examination and repair.
- Keep the power cord away from heated surfaces. Do not wrap the cord around the appliance.
- Do not use outdoor or/and never use the appliance together with any aerosol (spray) product.
- Never use this appliance while oxygen is administered.
- Do not let eyes and bare skin touch the heated plates when using. Always use the handle.
- Do not reset the heated parts directly on any surface during use.
- Never drop or insert any object into any opening on the appliance.
- Attachments become hot during use. Let them cool before handling.
- Never use while sleeping.
- Do not use an extension cord with this appliance.

WARRANTY

- This warranty is valid for one year from the date of purchase.
- Please save your receipt as proof of date of purchase.
- The defective product must be returned in its original packing and along with this warranty, to the original place of purchase, along with proof of purchase.
- This warranty does not apply to the product showing