



WORLD-CLASS
IN FEATURES.

SUPERSTAR

IN PERFORMANCE.



For more information, please contact **BLUE STAR LIMITED SALES AND SERVICE OFFICES**

- **Ahmedabad:** 301-302, Abhishree Avenue, Near Nehru Nagar Circle, S M Road, Ambawadi, Ahmedabad - 380 015, India. Phone: (+91) (79) 4022 4000.
- **Bengaluru:** Anjuman Kay Arr Tower, No. 28, Ward No. 77, Mission Road, Bengaluru - 560 027. Phone: (+91) (80) 4185 4000. Fax: (+91) (80) 4185 4001.
- **Bhubaneswar:** 3A, Satya Nagar, 2nd Floor, Bhubaneswar - 751 007. Phone: (+91) (674) 2572403/2573670/2570024. Fax: (+91) (674) 257 0544.
- **Chandigarh:** Adarsh Mall, 4th Floor, Plot No. 50, Industrial & Business Park, Phase - II, Chandigarh - 160 002. Phone: (+91) (172) 502 4000. Fax: (+91) (172) 500 4007.
- **Chennai:** KRM Plaza, No. 2, Harrington Road, Chetpet, Chennai - 600 031. Phone: (+91) (44) 4244 4000. Fax: (+91) (44) 2836 2101.
- **Goa:** 210, 2nd Floor, Gera's Imperium I, Patto, Panjim, Goa - 403 001. Phone: (+91) (832) 2438171/2437287.
- **Gurugram:** 6th Floor, Vatika Atrium, Golf Course Road, Sector 53, Gurugram - 122 002 (Haryana). Phone: (+91) (124) 409 4000. Fax: (+91) (124) 409 4004.
- **Guwahati:** Oasis Plaza, 1st Floor, Dr. B. Barooah Road, Ulubari, Kamrup, Guwahati - 781 007. Assam (Opposite Hotel Land Mark). Phone: (+91) (361) 246 8496.
- **Hyderabad:** Ashoka Raghupati Chambers, No 1-10-60 to 64, 4th Floor, S P Road, Begumpet, Hyderabad, Telangana 500 016, India. Phone: (+91) (40) 4400 4000. Fax: (+91) (40) 4400 4001.
- **Indore:** Office No. 502, Maloo-01 26/C, Scheme No. 94/C Ring Road, Indore - 452 010. Phone: (+91) (731) 4001211/4001311.
- **Jaipur:** A-19, First Floor, Main Sahakar Path, Near Sahakar Bhavan, Jaipur. Phone: (+91) (141) 331 3000. Fax: (+91) (141) 512 4899.
- **Kochi:** Prestige TMS Square, 9th Floor, No. 2, Service Road, Padivattom, Edappally, Kochi, Kerala - 682 024. Phone: (+91) (484) 449 9000. Fax: (+91) (484) 449 9190.
- **Kolkata:** Eco Centre Business Tower, 11th Floor, Unit No: 1 & 2, Plot No. 4, EM Block, Sector V, Salt Lake, Bidhannagar, Kolkata - 700 091. Phone: (+91) (33) 4081 5400.
- **Lucknow:** 177/4, Faizabad Road, Near IT Metro Station, Lucknow - 226 007. Phone: (+91) (522) 403 4000. Fax: (+91) (522) 403 4004.
- **Ludhiana:** 5th Floor, Sandhu Tower - II Gurudev Nagar, Ferozpur Road Ludhiana - 141 001 (Punjab). Phone: (+91) (161) 506 4000.
- **Mumbai:** Blue Star House, 9A, Ghatkopar, Link Road, Saki Naka, Mumbai - 400 072. Phone: (+91) (22) 6668 4000. Fax: (+91) (22) 6668 4004.
- **Nagpur:** 219 Bajaj Nagar, 1st Floor, South Ambazari Road, Nagpur - 440 010. Phone: (+91) (712) 662 4000. Fax: (+91) (712) 662 4002.
- **New Delhi:** Elegance Tower, 1st Floor, Jasola District Centre, New Delhi - 110 025. Phone: (+91) (11) 4149 4000. Fax: (+91) (11) 4149 4004/5.
- **Patna:** The Hub, 2nd Floor, Near Regent Cinema, Gandhi Maidan Road, Patna - 800 004.
- **Pune:** 201/A, Nityanand Complex, 247/A Bund Garden Road, Pune - 411 001. Phone: (+91) (20) 4104 4000/2616 7230. Fax: (+91) (20) 4104 4001 / 2616 1342.
- **Raipur:** MM Silver Plaza, Office No. 103, 1st Floor, Opp Udyog Bhavan, Ring Road No. 1, Raipur - 492 001. Phone: (+91) (771) 428 0900.
- **Thiruvananthapuram:** TC IV/962, Chandrika, Sree Chitra Nagar, Pipe line Road, Kawdiar, Thiruvananthapuram - 695 003. Phone: (+91) (471) 243 5025. Fax: (+91) (471) 243 4065.
- **Vadodara:** INCUSPAZE Office Spaces, 3rd Floor Alembic 1965, Alembic City, Gorva-Alembic Road, Vadodara - 390003. Phone: (+91) (265) 661 4000 / 265 233 2021/22. Fax: (+91) 265 233 7516.
- **Vijayawada:** No. 40-1-62, Nagas Hafeez Plaza, Opposite to grand modern supermarket, Near BENZ Circle, MG. Road, Vijayawada - 520 010. Phone: (+91) (866) 248 4004. Fax: (+91) (866) 248 4003.
- **Visakhapatnam:** Qubexpro Business Centre, V Mall, Lifestyle Building, 4th Floor, Facor Layout, Waltair Uplands, Visakhapatnam - 530003. Phone: (+91) (0891) 6686705

Blue Star takes great pride in celebrating its long and successful journey of growing to become an industry leader synonymous with innovation, quality and world-class customer experiences, throughout several countries across the globe. Leveraging over eight decades of experience in building air conditioning and refrigeration solutions, Blue Star's commercial refrigeration offerings are spread across a variety of applications at hotels, hostels, schools and universities and eateries. Each world-class solution is designed for optimum preservation and storage of foods and produce, ensuring freshness for longer periods. Commercial refrigeration solutions include reach-in chillers and freezers, under counter chillers and freezers, modular cold rooms, multi-deck open chillers, island freezers, deep freezers and bottle coolers. Blue Star also offers the widest range of storage water coolers with different choices of purification, all tested for superior performance in high-ambient conditions. Apart from every product complying with high-quality ISO standards for hygiene and sanitation, Blue Star manufactures multiple models under each product category to suit the requirements of customers across the spectrum.

WORLD-CLASS MANUFACTURING

Blue Star's foray into manufacturing began in the 1940s from a small office in Forbes Street in Colaba, Mumbai. In the mid-1960s, we expanded our manufacturing base with a factory in Thane, Mumbai. Today, Blue Star operates world-class manufacturing facilities at Dadra, Himachal Pradesh, Wada and Ahmedabad. With modern, state-of-the-art manufacturing technologies and equipment adhering to global quality standards and manufacturing processes, we have been delivering products of consistent quality both in India and international markets. In all, we have a manufacturing footprint in excess of 1 lakh sq. mt. manufacturing over 300 models across 25 product lines.



Himachal Pradesh



Dadra



Ahmedabad



Wada – Deep Freezer Plant



Panel Punching Machine



DEEP FREEZERS

Blue Star's deep freezers are a great choice to keep the food super-fresh for a long time. Our best-in-class deep freezers are built with top-notch components and the latest technologies to operate in the sub-zero range with the capability to maintain temperatures as low as -25°C . To preserve both freshness and nutrition and allow you to have your favourite dishes at any time.

ENDURANCE TEST

Our deep freezers are tested to deliver non-stop cooling in extreme ambient conditions. Just the gaskets are tested for 100 hours. Doors are tested to run for one lakh cycles of opening and closing. All to ensure trouble-free performance.

STORAGE SOLUTIONS

We have solutions for applications that require various sizes and capacities and different needs. From hard-top deep freezers to bottle coolers that are economical, yet rugged and reliable. Ideal for general store provisions like dairy products and ready-to-cook frozen food packets.

DISPLAY-AND-STORE

We offer high quality glass top freezers that show case products, create temperature value and also meet your aesthetic needs. While also offering a good balance between floor space and display.



HARD TOP DEEP FREEZER

Our compact hard-top deep freezer is ideal for residences and commercial spaces. They are certified with Star labelling, ensuring energy savings. Additionally, they come with unique features like Super Tropicalised, ensuring they perform even when it's 47°C outside and QuadraCool Technology, which cools uniformly from all sides. They are manufactured in our state-of-the-art facility in India, making them truly Indian at heart.

FEATURES



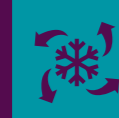
WIDE RANGE – ELEGANT CONTROL PANEL

Smart eye and Square design with LED light.



SUPER TROPICALISED

Designed to work even in 47°C ambient summer conditions.



QUADRACOOl TECHNOLOGY

Ensures even and optimum cooling from four sides.



COMPACT MACHINE

Ideal for small storage.



PLASTIC BASKETS

Long-lasting, corrosion-free, food-grade.



ROBUST CONSTRUCTION FOR LONG LIFE

TECHNICAL SPECIFICATION – HARD TOP DEEP FREEZER

Description	Units	CF2-90NEYW	CF3-130NEYW	CF4-180NEYW	CF4-230NEYW
Star Rating		2 Star	3 Star	4 Star	4 Star
Gross Capacity	L	71	108	161	215
Temperature Range		+8°C to -26°C	+8°C to -26°C	+8°C to -26°C	+8°C to -26°C
Refrigerant		R600a	R600a	R600a	R600a
No. of Lids		1	1	1	1
Inner Cabinet		Embossed	Embossed	Embossed	Embossed
PUF Thickness	mm	60	60	60	60
Overall Dimensions (WxDxH)	mm	505 X 570 X 829	575 X 570 X 829	765 X 570 X 842	955 X 571 X 842
Overall Dimensions (WxDxH)	Inch	20x22x33	23x22x33	30x22x33	38x22x33
Net Weight	kg	25	28	31	35
Baskets – Plastic		1	1	1	1

** Product Images are for representation purpose only.

**Due to continuous product development colours, features and technical specifications are subject to change without prior notice.

GLASS TOP DEEP FREEZER



Our compact glass top deep freezer is the ultimate solution for commercial use, offering optimal storage space and Low E-Toughened glass that seamlessly displays products stored inside. Available in multiple-coloured frames and Star rating which ensures energy-saving capabilities. Manufactured in our state-of-the-art factory, this product is proudly Made in India.

FEATURES



OPTIMISED STORAGE SPACE

Cooling ensured at the highest point in the Industry, Bigger depth allows for maximum display of candy & Cones. Increase in storage quantity leads to more profits.



SUPER TROPICALISED

Designed to work even in 47°C ambient summer conditions.



LOW E-TOUGHENED GLASS

Reflective glass for high performance and better visibility.



MULTI-COLOUR FRAME OPTIONS

Allows for customisation to enhance brand display and awareness.



MAXIMUM FRONTAL BRANDING AREA

Temperature controller on side grill ensures 100% space for branding on the front.



PLASTIC BASKETS

Long-lasting, corrosion-free, food-grade.

TECHNICAL SPECIFICATION – GLASS TOP DEEP FREEZER

Model	Units	GT5-130NP	GT5-180NP	GT5-230NP
Star Rating		5 Star	5 Star	5 Star
Gross Capacity	L	108	161	215
Temperature Range		-13.5°C to -26°C	-13.5°C to -26°C	-13.5°C to -26°C
Refrigerant		R600a	R600a	R600a
No. of Lids		2	2	2
Inner Cabinet		Embossed	Embossed	Embossed
PUF Thickness	mm	60	60	60
Overall Dimensions (WXDXH)	mm	577 X 527 X 810	767 X 527 X 810	957 X 527 X 810
Overall Dimensions (WXDXH)	Inch	23 X 21 X 32	30 X 21 X 32	38 X 21 X 32
Net Weight	Kg	29	32	37
Baskets – Plastic		1	1	2

** Product Images are for representation purpose only.

**Due to continuous product development colours, features and technical specifications are subject to change without prior notice.



HARD TOP DEEP FREEZER

Our range of hard top deep freezers is crafted with innovative technology. They are designed to ensure long-lasting freshness and offer consistent performance even in high ambient temperatures. Additionally, they are engineered to reduce your power bills, making them the most effective and economical solution for your food storage needs.



FEATURES



CURVACEOUS DOOR DESIGN WITH BUILT-IN CRESCENT HANDLE

Ensures zero cooling loss while providing ease of opening from any angle.



FROSTED INNER LID

Avoid condensed water flow into the machine.



ANTIBACTERIAL GASKET

Removable Gasket Offers greater food-safety assurance.



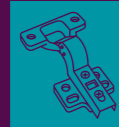
WIDE RANGE – ELEGANT CONTROL PANEL

Smart Eye & Burj design, Can work as Freezer or Cooler as per need.



HIGH DENSITY PUF INSULATION

For better holding time.



MULTI-ANGLE HINGE DESIGN

Door lid can be opened from 45° to 75° and has a soft closing mechanism.

TECHNICAL SPECIFICATION – HARD TOP DEEP FREEZER

Description	Units	CF4-330NC	CF5-330NEYW /NPYW	CF5-396NEYW /NPYW	CF5-460NEYW /NPYW	CF5-575NEYW /NPYW
Star Rating		4 Star	5 Star	5 Star	5 Star	5 Star
Gross Capacity	L	310	310	360	410	515
Temperature Range		+8°C to -26°C	+8°C to -26°C	+8°C to -26°C	+8°C to -26°C	+8°C to -26°C
Refrigerant		R290	R290	R290	R290	R290
No. of Lids		2	2	2	2	2
Inner Cabinet		Embossed	Embossed	Embossed	Embossed	Embossed
PUF Thickness	mm	65	65	65	65	65
Overall Dimensions (WxDxH)	mm	1122 X 708 X 853	1122 X 708 X 883	1262 X 708 X 883	1407 X 708 X 883	1697 X 708 X 883
Overall Dimensions (WxDxH)	Inch	44 x 28 x 34	44 X 28 X 35	50 X 28 X 35	55 X 28 X 35	67 X 28 X 35
Net Weight	Kg	47	49/50	54/55	57/58	63/64
Basket – Metal		1	1	1	1	1

** Product Images are for representation purpose only.

**Due to continuous product development colours, features and technical specifications are subject to change without prior notice.

GLASS TOP DEEP FREEZER

Our glass top deep freezers enable you to display frozen foods attractively, enticing impulse purchases and significantly boosting sales. These models come with a 5-star Rating, ensuring energy efficiency and cost-effectiveness. Plus, some models even come with LED lighting and offer a variety of coloured frames to suit everyone's tastes.



FEATURES



OPTIMISED STORAGE SPACE

Cooling ensured at the highest point in the industry, bigger depth allows for maximum display of candy and cones. Increase in storage quantity leads to more profits.



HIGH DENSITY PUF INSULATION

For better holding time.



CROWN DESIGN

Looks premium and has a robust frame design.



MULTI-COLOUR FRAME OPTIONS

Allows for customization to enhance brand display and awareness.



MAXIMUM FRONTAL BRANDING AREA

Temperature controller on side grill ensures 100% space for branding on the front.



PLASTIC BASKETS

Long-lasting, corrosion-free food-grade

TECHNICAL SPECIFICATION – GLASS TOP DEEP FREEZER

Description	Units	GT5-350N/NP	GT5-410N/NP	GT5-475N/NP	GT5-590N/NP
Star Rating		5 Star	5 Star	5 Star	5 Star
Gross Capacity	L	315	365	421	530
Temperature Range		-13.5°C to -26°C	-13.5°C to -26°C	-13.5°C to -26°C	-13.5°C to -26°C
Refrigerant		R290	R290	R290	R290
No. of Lids		2	2	2	2
Inner Cabinet		Embossed	Embossed	Embossed	Embossed
PUF Thickness	mm	65	65	65	65
Overall Dimensions (WxDxH)	mm	1125 X 670 X 859	1265 X 670 X 859	1410 X 670 X 859	1700 X 670 X 859
Overall Dimensions (WxDxH)	Inch	44 X 26 X 34	50 X 26 X 34	56 X 26 X 34	67 X 26 X 34
Net Weight	kg	55/52	58/56	64/60	72/68
Basket – Metal/Plastic		4/4	4/5	6/6	6/6

*LED Light option available only in NL/NPL Versions

** Product Images are for representation purpose only.

**Due to continuous product development colours, features and technical specifications are subject to change without prior notice.



HARD TOP DEEP FREEZER

Our range of hard top deep freezers is equipped with innovative technology and features, ensuring long-lasting freshness. Engineered to endure high ambient temperatures, these machines are built to last while also reducing power bills through energy-saving innovations, providing a reliable solution for your needs.



FEATURES



ANTIBACTERIAL GASKET
Offers greater food-safety assurance.



CONVERTIBLE COOLING TECHNOLOGY
Can work as Freezer or Cooler as per need.



ROBUST CONSTRUCTION FOR LONG LIFE



CORROSION RESISTANT BODY
Anti-corrosive body, embossed metal surface finish and long product life.



HIGHLY ENERGY-EFFICIENT COMPRESSOR

TECHNICAL SPECIFICATION – HARD TOP DEEP FREEZER

Model	Units	CF3-300MEW-SD /MPW-SD	CF3-300MEW /MPW	CF3-400MEW /MPW	CF3-500MEW /MPW
Star Rating		3 Star	3 Star	3 Star	3 Star
Gross Capacity	L	301	301	401	484
Temperature Range		+8°C to -26°C	+8°C to -26°C	+8°C to -26°C	+8°C to -26°C
Refrigerant		R290	R290	R290	R290
No. of Lids		1	2	2	2
Inner Cabinet		Embossed/ Plain Sheet	Embossed/ Plain Sheet	Embossed/ Plain Sheet	Embossed/ Plain Sheet
PUF Thickness	mm	60	60	60	60
Overall Dimensions (W X DXH)	mm	1147 x 678 x 857	1147 x 678 x 857	1447 x 678 x 857	1647 x 678 x 857
Overall Dimensions (W X DXH)	Inch	45 X 27 X 34	45 X 27 X 34	57 X 27 X 34	65 X 27 X 34
Net Weight	Kg	46 / 47	47 / 49	56 / 58	61 / 63
Basket – Metal		1	1	1	1

** Product Images are for representation purpose only.

**Due to continuous product development colours, features and technical specifications are subject to change without prior notice.



GLASS TOP DEEP FREEZER

Our glass top deep freezers provide cost-effective solutions for freezing, storage, and display needs all in one unit. These are elegantly designed, and they transform ordinary displays to eye-catching display for impulse purchase. These freezers are perfect for small shops, modern-day large format departmental stores and supermarkets.



FEATURES



LOW E-TOUGHENED GLASS
Reflective glass for high performance & better visibility.



EASY-SLIDE GLASS DOOR



TROPICALISED FOR HIGH AMBIENT TEMPERATURES



CORROSION-RESISTANT BODY



INTEGRATED LOCKING SYSTEM
Controlled access, easily replaceable.

TECHNICAL SPECIFICATION – GLASS TOP DEEP FREEZER

Description	Units	GT4-300M	GT4-400M	GT4-500M
Star Rating		4 Star	4 Star	4 Star
Gross Capacity	L	301	401	484
Temperature Range		-14°C to -24°C	-14°C to -24°C	-14°C to -24°C
Refrigerant		R290	R290	R290
No. of Lids		2	2	2
Inner Cabinet		Plain Sheet	Plain Sheet	Plain Sheet
PUF Thickness	mm	60	60	60
Overall Dimensions (W X DXH)	mm	1147 x 627 x 830	1447 x 627 x 830	1647 x 627 x 830
Overall Dimensions (W X DXH)	Inch	45x25x33	57x25x33	65x25x33
Net Weight	Kg.	53	61	68
Basket – Metal		3	4	5

** Product Images are for representation purpose only.

**Due to continuous product development colours, features and technical specifications are subject to change without prior notice.



CHEST COOLER

Our chest coolers are designed to swiftly chill soft drinks, milk, and beverages even in harsh Indian summer conditions. This makes them well-suited for commercial establishments such as restaurants, hotels, dairy farms and fast-food outlets. With efficient compressors and innovative tech, they not only keep things cool but also save energy, ensuring a win-win situation for your business and the environment.



FEATURES

- ENERGY-EFFICIENT COMPRESSOR FOR SAVINGS IN ELECTRICITY BILLS
- TROPICALISED FOR HARSH INDIAN SUMMERS
- SAFE CLOSURE WITH LOCK AND KEY

- FASTER TEMPERATURE PULL-DOWN
- HIGH DENSITY PUF INSULATION FOR LONGER COOLING RETENTION
- MULTI-ANGLE HINGE DESIGN FOR EFFORTLESS OPERATION

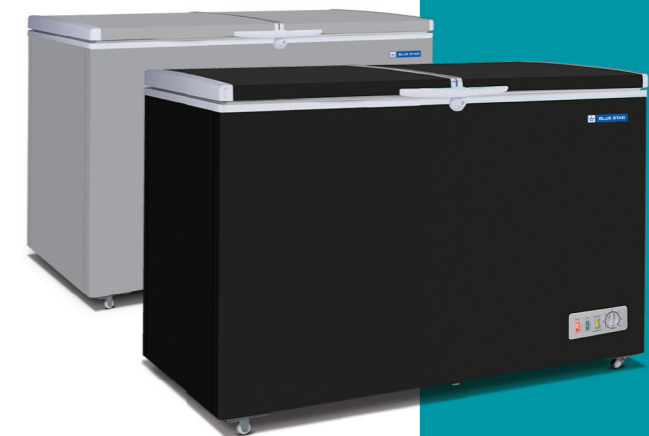
TECHNICAL SPECIFICATION – CHEST COOLER

Description	Units	CHBK300MP	CHBK400MP	CHBK500MP
Gross Capacity	L	301	401	484
Temperature Range		2°C to 8°C		
Power Supply		230V/50Hz/1Ph		
Refrigerant		R134a		
No. of Lids		1	2	
Inner Cabinet		Embossed		
PUF Thickness	mm	60		
Overall Dimensions (WxDxH)	mm	1147 x 678 x 857	1447 x 678 x 857	1647 x 678 x 857
Overall Dimensions (WxDxH)	Inch	45x27x34	57x27x34	65x27x35
Net Weight	kg	55	65	73

** Product Images are for representation purpose only
**Due to continuous product development colours, features and technical specifications are subject to change without prior notice.

COOLER CUM FREEZER

Our cooler-cum-freezer is the perfect solution for storing a variety of frozen foods and chilled drinks in one single unit. Combining two machines into one not only saves space but also cuts down on capital investment and operating costs. The Blue Star Cooler-cum-Freezer shows how bringing two halves together can bring a whole lot more benefits.



FEATURES

- DUAL COMPARTMENT MACHINE CONFIGURED AS FREEZER IN ONE AND COOLER IN THE OTHER
- EASY TO CLEAN AND MAINTAIN HYGIENE
- VERSATILE WHEELS FOR EASY MOVEMENT AND PLACEMENT OF UNIT

- TWO SEPARATE LIDS ENSURE INDEPENDENT ACCESS TO FREEZER AND COOLER CHAMBERS
- EXCELLENT DRAIN DESIGN
- FAST FREEZE MODE

TECHNICAL SPECIFICATION – COOLER CUM FREEZER

Model Name	Units	CHFK275DGS/-B/-G	CHFK350DGS	CHFK400DGS	CHFK500DGS
Cooler Capacity	L	105	150	148	162
Freezer Capacity	L	139	185	217	319
Total Capacity	L	244	335	365	481
Temperature Range – Cooler		2°C to 8°C	2°C to 8°C	2°C to 8°C	2°C to 8°C
Temperature Range – Freezer		-18°C to -22°C	-18°C to -22°C	-18°C to -22°C	-18°C to -22°C
Refrigerant		R600a	R290	R290	R290
Overall Dimensions (WxDxH)	mm	1069 X 599 X 860	1336 X 665 X 865	1355 X 770 X 880	1535 X 845 X 915
Overall Dimensions (WxDxH)	Inch	42 X 24 X 34	53 X 26 X 34	53 X 30 X 35	60 X 33 X 36
Net Weight	kg	44	52	61	70

** Product Images are for representation purpose only
**Due to continuous product development colours, features and technical specifications are subject to change without prior notice.