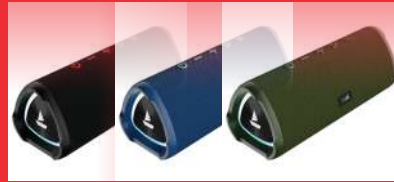


Manual

Thank you for purchasing the boAt Stone 750. You are now just a step away from the realm of pure audio bliss.

Allow this User Manual to guide your smooth sailing. Please note that playtime will vary depending on the selected volume level. You can stay plugged into the sound via Bluetooth wireless technology, TWS, and Aux wire compatibility. This portable wireless speaker has been designed for a smooth interface requiring minimal effort.



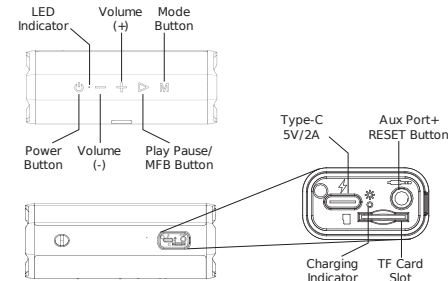
PACKAGE CONTENTS

- 1x Stone 750
- 1x Audio Cable
- 1x USB Type C charging Cable
- 1x Warranty Card
- 1x Catalogue
- 1x Manual

PRODUCT OVERVIEW:

POWER ON/OFF:

Long press the power switch to turn the speaker on or off. Note: Playtime varies according to the level of volume.



BASIC FUNCTIONS:

Power Button	Long press the power button to turn the speaker on/off.
LED Indicator	Indicates the LED lights as per the functions
Previous Track/ Volume Down	Long press the button to go to Previous Track & short press in steps to reduce the volume.
Next Track/ Volume Up	Long press the button to go to the next track. Short press in steps to increase the volume.
Play/Pause/MFB Button	Short press the "▶" button to play or pause a track.
Mode Button	Short press the M button to switch among playing modes: BT (Bluetooth) / TF / AUX.
Type-C Charging	Connect the C-Type charger over here.
AUX/ Reset Button	Connect the AUX cable here. Reset button is inside the Aux port, use the provided pin to prick the hidden reset button & it will set the device to default mode.
Charging LED Indicator	Indicated the LED while charging
Answer Incoming Calls	Short press the "▶" Button
End Call	Short press "▶" once to end the call
Bluetooth Pairing/ Unpairing	Single Press the M Button to go into the pairing mode
RGB Light	Long press the M button to turn the RGB lights on/off.

Front

OPERATING INSTRUCTIONS

RGB LIGHT

Long press the M button to turn off the RGB Light
Note: Default mode will be RGB lights on.

HANDS-FREE CALL:

- Under Bluetooth connection status, if there is an incoming call, the user can short-press the Play/Pause button to accept the call or long-press Play/Pause button to reject the call.
- Short press the Play/Pause button or operate on the mobile phone to end the call.

BLUETOOTH CONNECTIVITY:

- Turn the speaker on. Its LED Indicator blinks in white colour until the pairing is done.
 - Activate the phone's Bluetooth functionality and search for the name "Stone 750" and choose it to carry out the Bluetooth pairing.
 - As soon as the Bluetooth pairing is done, the connection is indicated by a prompt & the white LED becomes solid.
- Note: The speaker will automatically connect to the last paired device.



AUX MODE

- Connect one end of the provided cable to the AUX input of the speaker and the other to the external device.
 - In AUX mode you can control the audio playback via the media device/phone.
- NOTE: In AUX mode it is necessary to carry out the operation directly from the connected external device.

TWS CONNECTION:

1. Turn on the two Stone 750 speakers that you require to be forged into one. You only need to set one of the two units.
2. Press and hold the Play/Pause "▶" Button on one of the two speakers for 2 seconds until you hear a sound.
3. After releasing "▶", it may take few more seconds for the speakers to connect.
4. Activate the Bluetooth function and search for stone 750 to establish pairing
5. It searches for the other speaker for a few seconds.
6. Once both the speakers get connected via TWS mode, it gets indicated by a sound prompt.

RESET FUNCTIONALITY

- In case of Malfunction, use the provided pin to prick the hidden reset button & it will set the device to default mode.
- Bluetooth Pairing & Unpairing - Short press the "M" Button to go into pairing mode.
- Note: If the speaker doesn't turn off or doesn't respond properly, you could use the Reset functionality.

CHARGING

- To charge the speaker connect the provided charging cable to the TYPE C Charging slot on the speaker.
 - While charging the Charging LED will glow in red colour. Once fully charged the LED will go off.
 - In case of low battery, there will be two low battery warning prompts after which the speaker will go off.
- Note:
- Please don't use the speaker while it is in charging as it may decrease the battery's performance.
 - If the battery is completely discharged, speaker may restart leave it off and recharge it for at least an hour before using it.
 - When the battery is low, the speaker will periodically emit a warning tone.

WARNING:

- Please store and use this product in an environment of normal temperature.
- Please do not expose this product to rain or moisture environment.
- Please do not disassemble, repair or modify this product by yourself without authorization.
- When cleaning this product, please use a soft cloth or with little water if needed, please do not use chemicals for cleaning.
- In order to have an extended product life and protect your hearing, please avoid listening to songs on maximum volume for long time.
- The product is with built-in lithium battery, to avoid dangers, please do not discard or put it in the fire.

SPECIFICATIONS

Bluetooth Version	5.3+BR+EDR+BLE
Dimension	188*70.5*73mm
Weight	595g
Working Range	15m
Driver Size	2 inch outer magnet
Compatibility	AUX, TWS, Bluetooth
Frequency	20Hz-20KHz
Input Voltage	DC 5V/2A
Output Power	6W*2
Charging Time	2.5Hours
Playing Time	Up to 12 hours (at 60% volume)
Battery	2200 mAh @3.7V

Back

