

AAVANTE BAR 5500DA

5.1.2 CHANNEL 500W Dolby Atmos Sound Bar
with Wired Subwoofer & Dual Wireless Rear Satellites

USER MANUAL

Thank you for choosing Aavante Bar 5500DA. You are now just a step away from the realm of pure audio bliss. With the Aavante Bar 5500DA, experience immersive, cinematic audio on a whole new level at home. Stay plugged into the sound with an array of wired connections, USB, and Bluetooth wireless technology. Bring your home to life with the all new boAt Aavante Bar 5500DA consisting of Dolby Atmos Soundbar with Subwoofer and Wireless Surround Speakers. Allow this manual to guide you through the functioning of your sound system.

Dolby Atmos : It is equipped with Dolby Atmos technology for an enthralling, breath-taking auditory experience. Dolby Atmos features greatly improved sound, more channels, less compression, and a more realistic audio experience as compared to standard-definition audio formats. At higher bit rates it is virtually indistinguishable from the source audio.

Bring your home to life with boAt AAVANTE BAR 5500DA.

COMPONENTS LIST

- 1x Soundbar
- 1x Wired Subwoofer
- 2x Wireless Surround Speakers
- 1x Remote Control
- 2x AAA Batteries
- 1x User Manual
- 1x Warranty Card
- 1x AUX Cable
- 1x AC Power Cord
- 1x Wall-Mount Kit

SAFETY & WARNINGS

Caution

To reduce the risk of electric shock, do not dismantle the product and do not expose it to rain or moisture, The unit has no user-serviceable parts inside. Refer servicing to a qualified personnel only

The lightning flash within an equilateral triangle is intended to alert you to the presence of uninsulated dangerous voltage within the product's enclosure that may be of sufficient magnitude to constitute an electric shock to a person or persons.

Important! This symbol alerts you to read and observe important warnings and instructions on the unit or in this manual.

Notice:

This appliance is not intended for use by persons (including children) with reduced physical sensory or mental capabilities, or lack of experience and knowledge, unless they are under proper supervision.

Children should be supervised to ensure that they do not play with the appliance.

1. To prevent possible hearing damage, do not listen at high volume levels for longer periods of time.
2. Never use the device unsupervised! Switch off the device when not in use.
3. The appliance is not intended to be operated by means of an external timer or separate remote controller system.
4. If the power supply cord is damaged, it must be replaced by the manufacturer, service agent or similarly qualified persons in order to avoid a hazard.
5. Before operating this system, check the voltage of this system to see if it is identical to the voltage of your local power supply.
6. The unit should not be impeded by covering the ventilation opening with items such as newspaper, table-cloths, curtains etc. Make sure that there are at least 20 cm of space above and at least 5 cm of space on each side of the unit.
7. The system must not be exposed to dripping or splashing. Do not place objects filled with liquids such as vases, bottles or humidifiers on the unit.
8. To prevent fire or shock hazard, do not expose this equipment to direct heat, rain, moisture or dust.
9. Do not place this unit near any water sources e.g. taps, bathtubs, washing machines or swimming pools. Ensure that you place the unit on a dry, stable surface.
10. Do not place this unit close to a strong magnetic field.
11. Do not place the unit on an amplifier or a receiver.

12. Do not place this unit in a damp area as the moisture will affect the life of electric components.
13. Do not attempt to clean the unit with chemical solvents as this might damage the finish. Wipe with a clean, dry or slightly damp cloth.
14. When removing the power plug from the wall outlet, always pull directly on the plug, never pull on the cord.
15. Depending on the electromagnetic waves used by a television broadcast, if a TV is turned on near this unit while it is also on, lines might appear on the LED TV. Neither this unit nor the TV is malfunctioning. If you see such lines, keep this unit away from the TV set.
16. The mains plug is used to disconnect the device, the disconnected device should remain readily operable.

IMPORTANT SAFETY INSTRUCTIONS

1. Read, keep, and follow all instructions. Heed all warnings.
2. Avoid dropping. Do not disassemble.
3. Do not use any corrosive cleaner/oil to clean. Clean only with a dry cloth.
4. Do not submerge in water; do not use this apparatus near water. The product should not be exposed to dripping or splashing water.
5. Do not block any ventilation openings. Install it in accordance with the manufacturer's instructions.
6. Avoid extreme temperatures. Do not install near any heat sources such as radiators, heaters, stoves, or other apparatus (including amplifiers) that produce heat.
7. Protect the power cord from being walked on or pinched, particularly at plugs, convenience receptacles, or where they exit from the apparatus.
8. Only use original or certified cables or attachments/accessories specified by the manufacturer
9. Do not use the device outdoors during thunderstorms, Unplug this apparatus during lightning storms or when unused for long periods of time.
10. Refer all servicing to qualified service personnel. Servicing is required when the apparatus has been damaged in any way, for example, when the power-supply cord or plug is damaged, liquid has been spilled or objects have fallen into the apparatus, the apparatus has been exposed to rain or moisture, does not operate normally, or has been dropped.
11. The AC plug is used to disconnect the device; the disconnected device should remain readily operable. In order to disconnect the apparatus from the AC power completely, the AC plug must be removed from the AC outlet completely.

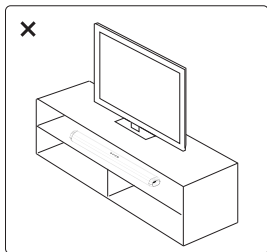
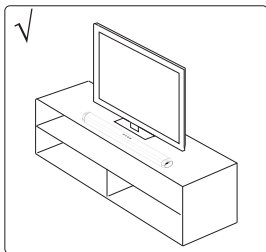
PREPARATION FOR USE

UNPACKING AND SET UP:

- Remove the Soundbar from the carton and remove all packing material from the Soundbar. Save the packing material, if possible, in case the Soundbar ever needs to be serviced or transported. The original carton and packing material are the only safe way to pack your Soundbar to protect it from damage in transit.
- Remove any descriptive labels or stickers on the front or top of the cabinet. Do not remove any labels or stickers from the back or bottom of the cabinet.
- Place your Soundbar on a level surface such as a table, desk, or shelf, convenient to an AC outlet, out of direct sunlight, and away from sources of excess heat, dirt, dust, moisture, humidity, or vibration.
- Unwind the Line cord connecting the AC adapter and extend it to its full length.

INSTALLATION - FREE STANDING

This soundbar can sit free-standing on a surface, or it can be mounted to a wall.

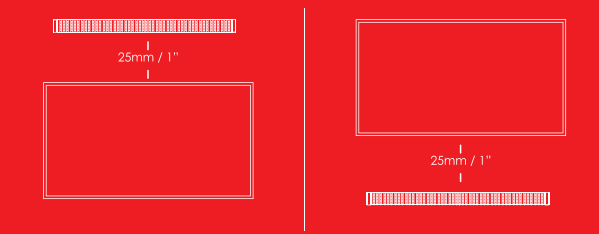


- Place the soundbar horizontally on a flat surface such as a TV unit or shelf and align it centrally with the TV screen.
- Allow some space between the speaker and the wall.
- Don't place it inside a cabinet or a walled shelf. Follow this guidance for the best sound output and good airflow around the soundbar.

INSTALLATION – MOUNT ON THE WALL

Wall mounting instructions are as follows:

- If you don't feel confident to correctly and securely wall-mount the sound bar, Seek the assistance of an experienced person of professional.
- Install the speaker on a vertical, fast, reinforced area of the wall.
- For plaster walls, it is recommended to screw into wall studs for greater security.
- For optimum performance, allow at least 25mm/1" distance between the sound bar and the TV.



INSTALLATION – WALL MOUNT

1. Open 4 holes in the wall referring to the iron bracket for wall mounting, the spacing distance of the holes in the wall is corresponding to the symmetrical position on the soundbar.

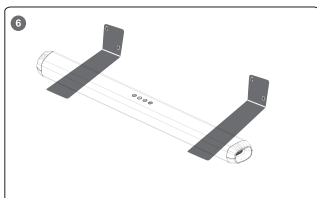
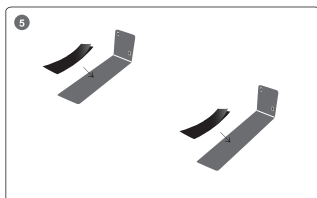
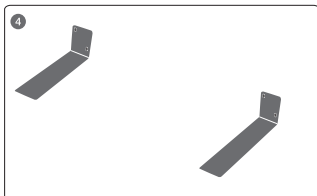
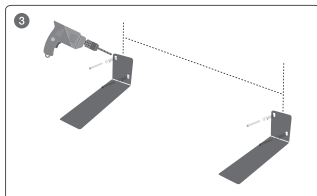
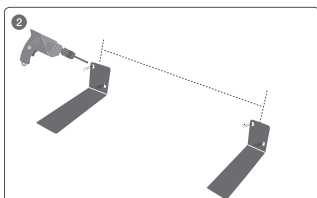
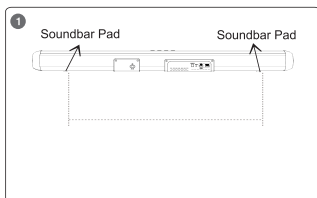
(When measuring the position of wall mounting, avoid the sound bar pads put on the iron bracket, because the pad is not flat, and will not be sticky well on the double-sided tape on the bracket.)

2. Fix the plastic anchor in the 4 holes of the wall mounting bracket.

3. Then fix the supplied screws on the plastic anchor and tighten the screws to ensure that the wall mounting bracket will not shake.

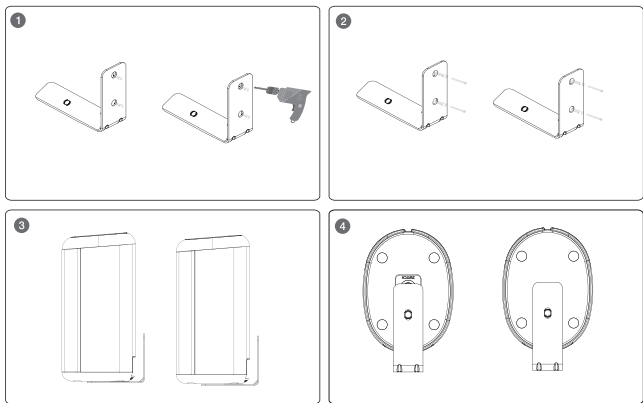
4. After fastening the screws, tear off one side of the two double-sided tapes in the supplied packaging, and paste them on the right and left into the extension of the wall brackets according to the suitable position where the Sound Bar is on the iron bracket.

5. Then tear off the other side of the double-sided tape attached to the iron bracket, place the Sound Bar on the double-sided tape on the metal fittings, press it firmly, and release it until it is completely stuck.



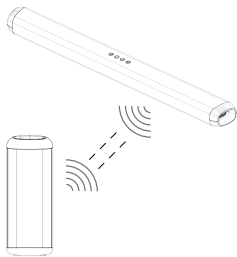
WALL MOUNTING INSTRUCTIONS (SURROUND SPEAKERS)

1. Open 4 holes in the wall. For the distance between the 2 holes, pls refer to the soundbar bracket wall mounting.
2. Fasten the plastic anchors in the 4 holes of the wall mount bracket.
3. Then attach the provided screws to the plastic anchors and tighten the screws to ensure that the wall mount bracket does not shake.
4. Place the surround speakers on the bracket with the corresponding holes at the bottom, then fix the provided screws in the bottom of the bracket and the holes of the surround speakers, then tighten the screws.



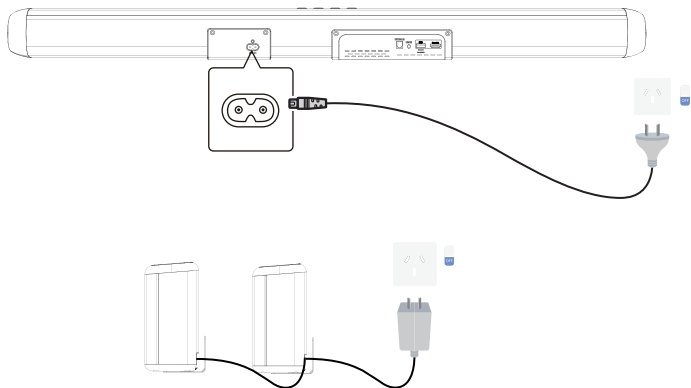
PAIR UP WITH SURROUND

1. Plug the soundbar into the main socket and press "POWER/STANDBY" to turn on the soundbar, then press "INPUT" on the soundbar to switch to the Bluetooth (BT) mode.
2. Power on the rear surround speakers. The blue LED indicator on the surround will blink slowly which indicates entering pairing mode between the soundbar and the wireless surround.
3. Then press the "switch button" on the bottom of the rear surround for around 2.5 seconds. The blue indicator blinks quickly to wait for the soundbar and rear surround to automatically pair.
4. After about 20-30 seconds, the blue indicator of the rear surround's changes to steady. The soundbar and rear surround are matched successfully automatically.
5. The devices will be able to pair automatically after the initial successful pair, even if they are switched off and on.
6. If you want to pair your wireless surround with another soundbar, please repeat steps 1 to step 4 above. Ensure that the soundbar you want to pair with the surround is within range turned on and any other pairing devices are switched off or on standby.



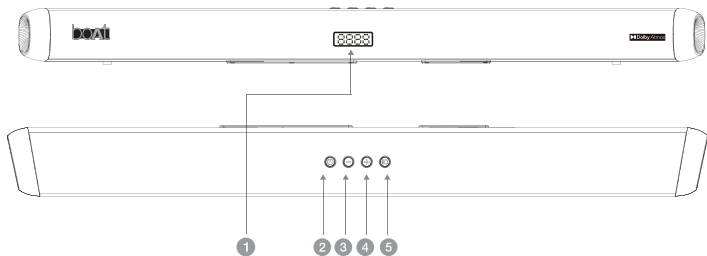
CONNECT TO POWER

1. Plug in the power cord with one side to AC IN on sound bar & the other side to an AC wall outlet (see the following diagram). When you connect the soundbar to the main socket, the unit will be in STANDBY mode, firstly it will display -
2. Switch on the soundbar by short-pressing the button on the soundbar or on the remote controller. After 12s, the default input mode will automatically appear on the display screen.
3. Press and hold the power button on the soundbar or on the remote controller for 2 seconds to switch it off, and then disconnect the main plug from the main socket if you want to switch the unit off completely.

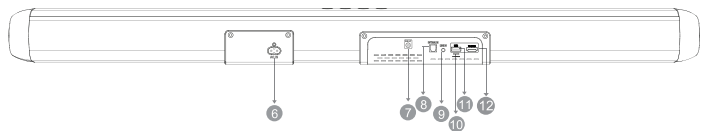


CONTROLS AND CONNECTIONS

Get to know your Soundbar.

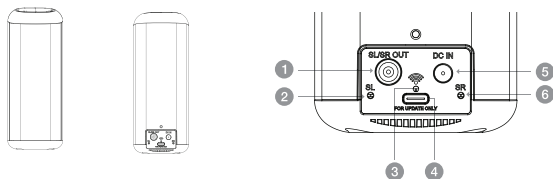


1	Display Panel	Display will show the active mode
2	Standby	Standby mode to power on/off
3	Volume Button	Decrease the volume.
4	Volume Button	Increase the volume.
5	INPUT	Select an input source for the Soundbar



6	AC IN	Connect to power supply
7	Woofer Port	Connect to the wired subwoofer.
8	Optical	Connect to an optical audio output on TV or digital devices.
9	Aux	Auxiliary Audio input from Mp3/Phone/set-top box devices.
10	For Update	Upgrade software of this product
11	USB	Connect the USB flash drive to the USB port on the soundbar
12	HDMI eARC	Connect to HDMI eARC

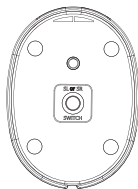
CONTROLS AND CONNECTIONS



1	Wireless Surround SL or SR out	The wireless surround Channel is fixed, when the end user's power socket position isn't matched, please press the switch button from the bottom of the satellites to exchange the channel position.
2	SL LED light	Lights up when the master satellite sound is set to left
3	LED indicator	Indicates the pairing between the soundbar and wireless Satellite.
4	For Update Only	For Software upgrades only
5	DC IN	For DC input
6	SR LED light	Lights up when the master speaker's Satellite is set to right

BOTTOM VIEW

Short press to switch between Left/Right channels (wireless satellite Channel is fixed, when end user's power socket position isn't matched, pls press switch button from bottom of surround speaker to exchange channel position.) Long press for the surround satellite to pair with the soundbar.



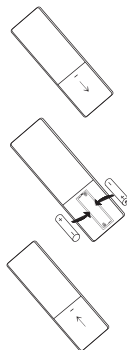
REMOTE CONTROL

SETUP

Insert two AAA-size batteries according to the polarity markings (+ / -) inside the compartment. Make sure the batteries are correctly aligned and properly pushed into place.

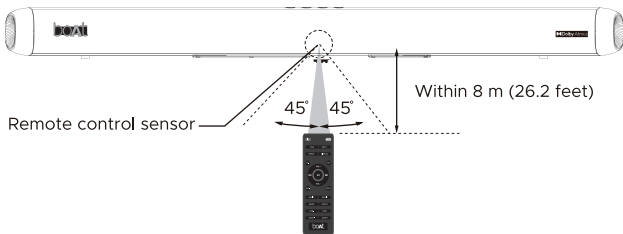
PRECAUTIONS WHEN USING BATTERIES:

- Do not use old and new batteries together.
- Do not use different types of batteries together.
- Remove the batteries from the remote if you do not intend to use it for a long time.
- When discarding used batteries, follow any guidelines for recycling and disposal of batteries that apply in your local area.
- Keep batteries away from children and pets.



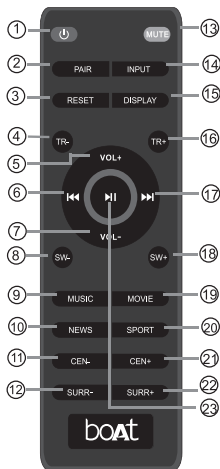
OPERATING RANGE OF THE REMOTE CONTROL

- When the unit is mounted on a wall, point the remote control at the remote control sensor on the panel. The provided Remote Control allows the unit to be operated from a distance.
- Even if the Remote Control is operated within the effective range of 26.2 feet (8m), remote control operation may be impossible if there are any obstacles between the unit and the remote control.
- If the Remote Control is operated near other products which generate infrared rays, or if other remote-control device using infrared rays are used near the unit, it may operate incorrectly. Conversely, the other products may operate incorrectly.



REMOTE CONTROL OVERVIEW

1. POWER: To switch the soundbar ON/OFF.
2. PAIR: Press and hold the button for 2 seconds to connect or disconnect the pairing device.
3. RESET: Press and hold to reset to factory default settings
4. TR - : Turn treble down
5. VOL+: Press to increase the volume level.
6. Press to play the previous song (only for USB and Bluetooth mode)
7. VOL-: Press to decrease the volume level.
8. SW - : Press to decrease subwoofer volume.
9. MUSIC: Select the music EQ effect
10. NEWS: Select the news EQ effect
11. CEN - : Decrease the center channel volume
12. SURR - : Decrease the surround sound volume
13. MUTE: Press to mute. Press again to unmute.
14. INPUT: Press to change between input modes
15. DISPLAY: Turn the LED display on/off (only when the soundbar is turned on)
16. TR + : Turn treble up
17. Press to play the next song (only for USB and Bluetooth mode)
18. SW + : Press to increase the subwoofer volume
19. MOVIE: Select the movie EQ effect
20. SPORT: Select the Sport EQ effect
21. CEN+: Increase center channel volume
22. SURR+: Increase surround sound volume
23. Press to play/pause (only for USB and Bluetooth mode).



OPERATION

General Operation

Function	Action
Turn the soundbar ON	Press the button on the top of the soundbar or press the (POWER) button on the remote control to switch the soundbar on.
Turn the soundbar OFF	Press and hold the button on the top of the soundbar, or press the (POWER) button on the remote control to switch the soundbar off.
Change the input source/mode	When the soundbar is on, press the repeatedly or press the INPUT button on the remote or the button on the top of the soundbar repeatedly to change the input source.
Increase/Decrease the volume	Press the + / - buttons on the soundbar or the VOL + / VOL - buttons on the remote control to adjust the volume level

Input Mode

Mode	Description
HDMI (ARC)/Optical	Audio from TV (via HDMI e-ARC port or OPTICAL jack)
Bluetooth	Sound from a connected device (via AUX port)
USB	Sound from a Bluetooth connected device
AUX	evices Sound from a USB storage device

Auto Standby

1. The unit will automatically turn to standby mode when no audio input is received for 20 minutes. The sound bar will wake up from standby mode when any button is pressed, or source input is received.
2. If the TV or the external unit is disconnected, switch off the soundbar. To switch the unit off completely, remove the mains plug from the mains socket. Please turn the unit off completely to save energy when not in use.
3. The screen will be turned off for around 20 seconds without any operation, when pressing the power buttons on the sound bar or on the remote control or using the volume button, the display will be wakened up again.

DOLBY ATMOS

Dolby Atmos transports you from the ordinary into the extraordinary with breathtaking, moving audio that fills your room and flows above and around you. Dolby Atmos gives you an amazing experience you have never heard before with overhead sound and all the richness, clarity, and power of Dolby sound.

Using Dolby Audio:

DOLBY ATMOS is only available in HDMI (e-ARC) mode.

1. To use Dolby Atmos® in HDMI (e-ARC) mode, your TV has to support Dolby Atmos®.
2. Make sure that “No Encoding” is selected for bitstream in the digital audio output of the connected external device (e.g., Blu-ray DVD player, TV, etc.).
3. While entering Dolby Atmos / Dolby Digital Plus format, the soundbar will show DOLBY ATMOS / DOLBY SURROUND.
4. Set the audio output sampling rate to 192 kHz if you can adjust it. This sound bar supports 4K Pass through and DOLBY VISION. When you play a disc that supports 4K video signal, the signal can be delivered to your TV.

Note:

- The full Dolby Atmos experience is only available when the Soundbar is connected to the source via a HDMI 2.0 cable.
- The Soundbar will still function when connected via other methods (such as a Digital Optical cable) but these are unable to support all of the Dolby features.
- Given this, our recommendation is to connect via HDMI, in order to ensure full Dolby support.

BLUETOOTH PAIRING

Connect the Soundbar to your Bluetooth device (such as an iPad, iPhone, iPod touch, Android phone, or laptop), and then you can listen to the audio files stored on the device through your Soundbar speakers.

Turn on the sound bar and short press the INPUT button repeatedly on the unit or INPUT button on the remote control to switch the sound bar to Bluetooth model and the LED display on the sound bar will flicker in the Bluetooth pairing mode.

2. On the Bluetooth device, switch on the Bluetooth, search for, and select Avante Bar 5500DA on your Bluetooth list to pair, if prompted for a password, please use “0000”.
 3. Wait until you hear a sound prompt from the Soundbar. The LED will stop flickering once the pairing is done and BT will be displayed on the display panel of the soundbar.
 4. Select and play audio files or music on your Bluetooth device.
- While playing a song, if a call is coming, music will be paused and is resumed when the call ends.

Press and hold the RESET button for more than 2 seconds to restore factory default settings; Hold the Pair button on the remote control for more than 2 seconds to disconnect paired BT device or connect back last disconnect BT device.

Note:

- Remove Aavante Bar 5500DA from your device's Bluetooth history and ensure it's less than 8 meters away. Then try pairing again. To get the best sound quality, make sure there is a clear line of sight between the connected device and your sound bar.
- If your pairing device or connected device is switched off or manually disconnected, the soundbar will automatically enter pairing mode.
- The music streaming may be interrupted by obstacles between the device and Soundbar, such as a wall, metallic casing that covers the device, or other devices nearby that operate at the same frequency.
- If you want to connect your Soundbar with another Bluetooth device, press, and hold Pair on the remote control to disconnect the currently connected Bluetooth device.

PLAYING VIA USB PORT:

The sound bar automatically switches to USB input mode with the LED display USB when a USB flash drive is inserted (this mode isn't selectable on the sound bar or remote control unless a USB flash drive is connected).

1. Ensure that your USB flash drive contains MP3 audio files (other file types not supported)
2. Connect the USB flash drive to the USB port on the sound bar (or your own USB extension cable connected to the USB port); music will automatically play with an LED display "00:00", when music is played, the play time will be automatically displayed on the screen.
3. Press the VOL +/- buttons to adjust the volume to your desired level.

PLAYING VIA AUX MODE:

Use a 3.5mm to 3.5mm audio cable to connect the PC, tablet, smartphone, TV's headphone socket to the AUX socket on the soundbar.

- Use an RCA to 3.5mm audio cable to connect the Blue Ray DVD Player / TV's audio output sockets to the AUX socket on the soundbar.
- Then short press the INPUT button on the sound bar or on the remote controller to switch to audio input mode with LED display lighting up.
- In this mode, playback can only be controlled on your connected device

Note: For some computers, you may need to access the audio control panel to manually set the soundbar as above picture.

PLAYING VIA OPTICAL MODE:

Using an optical cable, connect the OPTICAL connector on your Soundbar (Optical digital input) to the OPTICAL OUT connector on the TV or other device. The TV or other device must have an optical digital output. Proceed as follows:

- Connect the optical cable to the OPTICAL jack on the rear of the soundbar.
- Connect the other end of the optical cable to the audio output jack on the TV or other device.
- Set the TV to PCM Stereo or Stereo 2.0.
- Start playing on the TV
- Press the source input button on the sound bar or remote control to activate the corresponding mode (the OPTICAL mode) to open the optical digital input of your sound bar. After successfully connecting, the LED display will show OPT. Operate your audio device directly for playback features.

PLAYING VIA HDMI (E-ARC) MODE:

Connect to HDMI (e-ARC) Socket

Some 4K HDR TVs require the HDMI input or picture settings to be set for HDR content reception. For further setup details on HDR display, please refer to the instruction manual of your TV.

> Option 1: e-ARC (enhanced Audio Return Channel)

- Your Soundbar supports HDMI with an enhanced Audio Return Channel(e-ARC). If your TV is HDMI e-ARC compliant, you can hear the TV audio through your Soundbar by using a single HDMI cable.
- Use a High-Speed HDMI cable, connect HDMI (e-ARC) on the soundbar to HDMI (e-ARC) connector on your TV.
- Then short-press the INPUT button on the sound bar or the INPUT button on the remote controller to switch to HDMI (e-ARC) mode. After a successful connection, the LED display will show ARC. (If TV support e-ARC, LED display will show e-ARC).

Note: Your TV must support the HDMI-CEC and e-ARC functions. HDMI-CEC and e-ARC must be set to be on.

- The setting method of HDMI-CEC and e-ARC may differ depending on the TV. For details about the e-ARC function, please refer to your TV owner's manual.
- Only HDMI 1.4 compatible cables can support the e-ARC function.

TECHNICAL SPECIFICATIONS

Model	boAt AAVANTE BAR 5500DA
Bluetooth Version:	V5.3
Net Weight:	11.60kg
Working Range:	10m
Driver Size:	2.5"x3 +2"x2+52X75"x2+6.5"x1
Working Voltage	SMPS AC 110-240V 50/60Hz
Frequency:	45Hz-20Khz
Output Power:	500W
Compatibility	Bluetooth V5.3, HDMI eARC, Optical, Aux & USB