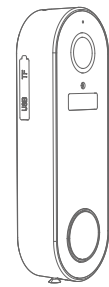


CP PLUS
Thank you for choosing
our products!

CP PLUS
Smart wifi Battery Doorbell
User Manual



Work with Alexa and Google Assistant

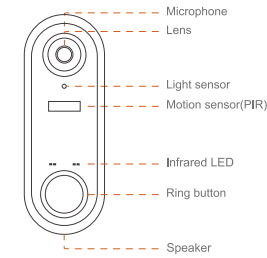
1. Main features

- 100% Wire-free operation
- Super wide view angle
- IP65 Waterproof
- Clear night-vision
- 1080P FULL HD video
- Two-way full-duplex communication
- TF card recording up to 128GB

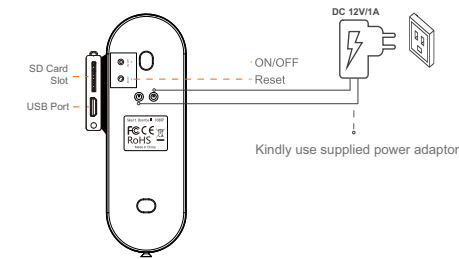
2. Packing List

Open the package and make sure the Smart wifi battery doorbell (device) is intact, and with all the below accessories.

- 1 x Smart wifi battery doorbell
- 1 x USB Cable
- 2 x User manual
- 1 x Screw Package (Screw, Screw cap)
- 1 x 3M Stickers
- 1 x Small wrench
- 1 x USB Chime



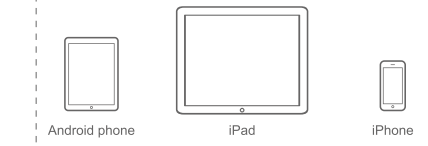
Component	Description
Microphone	Transfer the sound
Lens	Capture Videos
Light Sensor	Infrared Light Adjustment
Motion sensor (PIR)	Allows to detect human movement
Infrared LED	Additional Light in Low-light Conditions
Ring button	You will receive notification or call by the App when its pressed.
Indicator light	Status indicator light which shows the device's working status.
Speaker	Audio channel



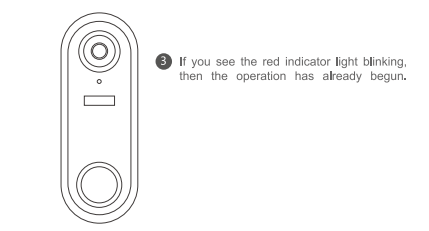
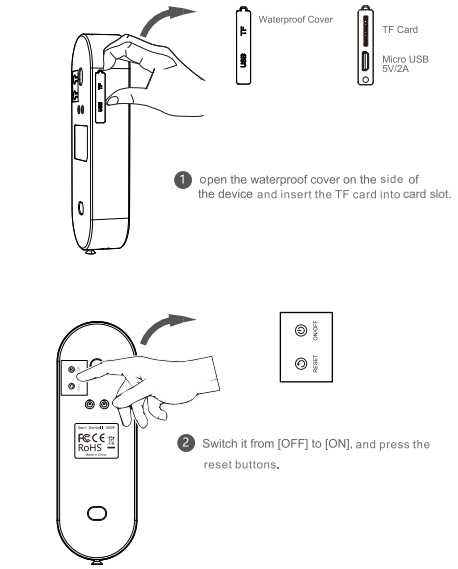
Component	Description
Power Switch	Power OFF/ON
Reset	By pressing the reset button on the back of the device for more than 3 seconds, you will hear a sound and see the indicator light blinks red. (Be advised that all your data on the device will be reset to default.)
SD Card Slot	Use SD Card to add storage to Doorbell
USB Port	Once your Doorbell battery is completely drained then you need to charge battery with Micro USB cable using 5v Zamp adaptor
Built-in Siren	Controlled by Mobile APP
CE Label	Product label

3. Preparation

One smartphone or tablet PC with IOS 9.0 or Android 4.4 operating system or higher (This model does not work with a Mac or Windows PC)



Wi-Fi Router
• This device does not support 5.0Ghz and will only connect to a 2.4Ghz WiFi router



4. LED Light State Introductions

NO.	LED Status	Device Status
1	Blue on and slow blinking red LED	Configuration status:
2	Blue on and fast blinking red LED	Trying to connect to WIFI
3	Blue and red are on	Low power
4	Blue LED	Network is successful and working properly or watch live video.
5	Blue and red LED are off	Sleep mode or off-line

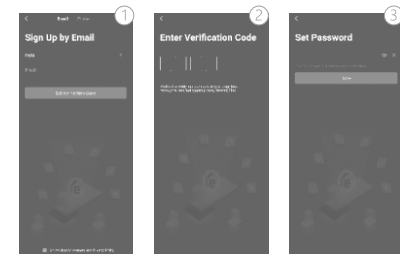
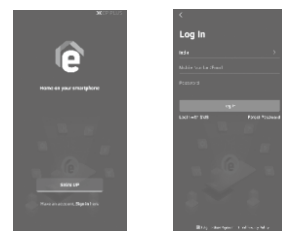
5. Set up APP&Configure Device

5.1 Search and download "Ezykam" in major application markets or scan the QR code below to download the APP.



5.1.1 Once you download the APP to your smart phone, you may enter the first page which you can Login with existing account or Register.

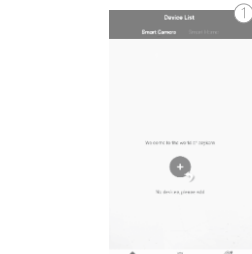
(If you are the new user of Ezykam+ and don't have an account, please choose register first and follow the below screenshots to complete the registration.)



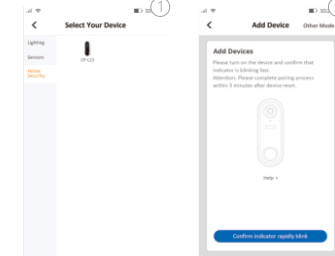
(If you have the existing account, there are two ways to login, one is with SMS verification Code, the other one is with password. In case you forget the password, you may choose login SMS verification Code or you can choose forget password to reset it by Entering Verification Code which sent to your mobile via message.)

5.1.2 Once the account has been setup successfully, then you will automatically enter the page of "Add Device", kindly follow below steps to add the camera.

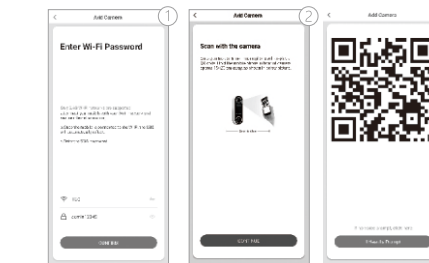
Step1: click "Add Device" or click "+" on top of right on this page.



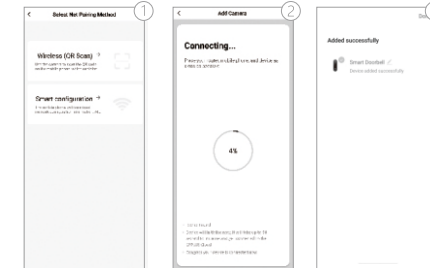
Step2: Choose Smart Home > Home Security > Door bell and follow the snapshot below



Step3: You may choose next step to go to QR code pairing mode or you may go to "other Mode" on top of right to enter the page of choosing QR Code Net-pairing or Smart configuration, if you choose the "next step" you may follow the below screenshots:



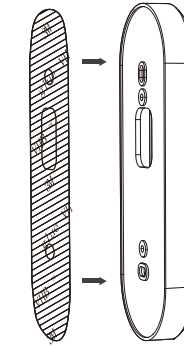
Step4: If you choose "the other mode" on the top of the right side, you may find QR Code Net-pairing Which you will go back to the "Add Device" page and process it again like above procedure. Or you can choose "Smart configuration" and follow the below screenshots and after that you will see the device added successfully.



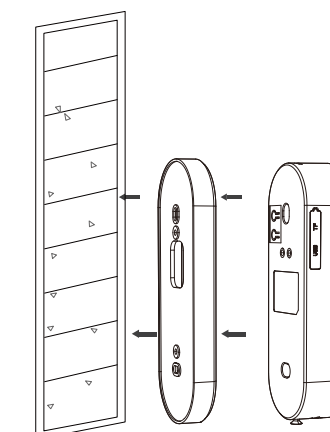
6. How to mount your doorbell

Method 1: Attaching to a smooth wall surface

1. Stick the double-sided 3M stickers on the bracket (rain cover).



2. Tear off the protective film on the 3M stickers, apply it on a smooth wall surface at the appropriate height. Hang the device on the bracket from top down lining up the hole at back of device. Tighten the screw on the bottom of the unit to the bracket.



Method 2: If you want install the device on a rough wall (such as concrete, brick or a wooden surface), use screws to fix the bracket.

