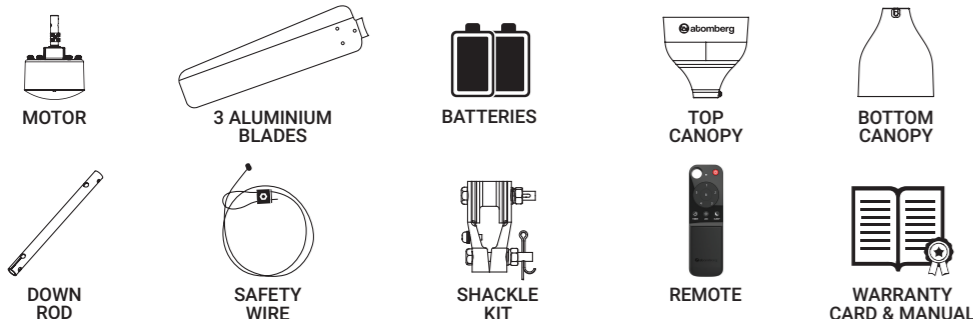


Dear Customer,
 Congratulations on the purchase of ATOMBERG'S super-efficient RENESA ceiling fan. Please read this guide before using this product. It would also be advisable to store this guide safely for future reference.

PACKAGE CONTENTS



WARNING

Do not install or use fan if any part is damaged or missing.

This product is designed to be used only with those parts or accessories supplied with this product and/or any accessories designed specially for use with this product by Atomberg. Any such use of other parts or accessories may turn the product warranty null and void, and may result in personal injury or property damage as well.

SAFETY INSTRUCTIONS

Be careful of the fan and blades while cleaning, painting, or working near the fan. Always turn off the power to the ceiling fan before servicing.

Do not put your hand or any other objects near the fan blades while the fan is running.

Do not modify the blade design to change the air flow.

Product must be used along with the speed control unit/remote provided with the fan. Do not use standard regulator used for ordinary fans.

WARNING

Observe the following to reduce the risk of fire, electric shock or injury:

Only use this unit in the manner intended by Atomberg. If you have any questions regarding the product, please contact Atomberg.

Before servicing or cleaning, switch off the main power panel and switch.

Wiring of the fan must be done only by a qualified and certified electrician.

FEATURES

India's most energy-efficient RENESA ceiling fan • Best service value (air delivery/power consumed) in India • Run up to 3 times longer on inverter resulting in longer battery runtime • Smart sensorless algorithm for greater reliability • No heating of fan even after long hours of runtime, resulting in an extra-long life • Consistent speed even at low voltages • Easy speed controls using a smart remote • Full copper motor and double ball-bearing for better stability and longer life • Aluminum body and blade, resulting in zero rust • Zinc-plated parts and accessories for rust-free life • Protective coating over electronics for better resistance against moisture • All fans are tested for durability in extreme conditions before shipping.

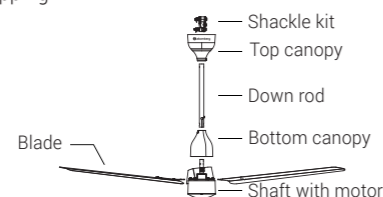
INSTALLATION

Assembly:

Mandatory Step:

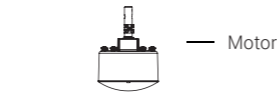
Bypass or eliminate the regulator from the connection before installing on Atomberg fan for optimal performance

The picture shown aside depicts the exact order of placement of various parts.



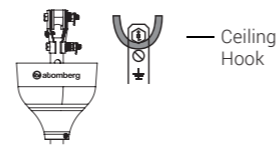
Step 1.

Carefully remove the motor from the box and keep it on soft padding to prevent it from getting scratched.



Step 2.

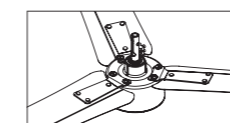
Insert both the canopies into the shaft from the top of the rod, attach the shackle to the hanger or ceiling hook using the screws provided with the package. Fasten the nut, and make sure that you fit the safety nut, washer and the R-pin to prevent slipping. Adjust the top canopy wires so that it covers both the assembly and the connection wires.



Step 3.

Align the holes on the blade shank with the motor holes. Securely fasten the blades with the screws and washer provided.

Not recommended for use in high humid areas like Washroom, direct or indirect exposure to water entries etc.



WARNING

If the blades are not secured properly with the screws and the washer, it may cause injury during operation. Also, an imbalanced fan may cause damage to the motor and reduce the lifetime of the fan.

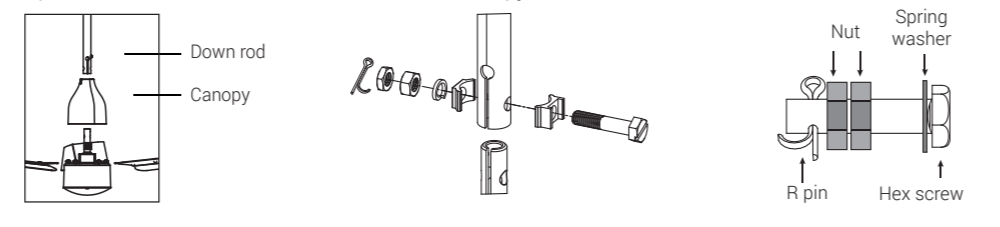
Any damage caused by incorrect installation and wrong practices followed while connecting the fan are not covered under the warranty terms. Please check the warranty terms in detail.

Do not turn on the fan until the blades are securely fastened to the ceiling fan.

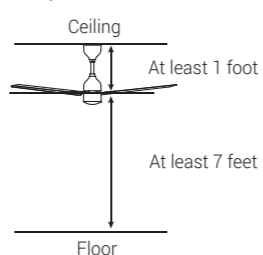
HOW TO HANG THE FAN

Step 4.

Insert the screw to assemble the shaft and the down rod. Insert the washer, nut and R-Pin in the sequence depicted in the illustration below. Pull down the canopy to cover the OC connector and screws.



Step 5.



WARNING

The fan blade must be hung with at least 1 foot of clearance from the ceiling for optimal performance and safety.

Any object next to the fan must be at least 2 feet away from the tip of the fan blade to reduce chances of risk or injury.

The fan must be hung with at least 7 feet of clearance from the floor to the blades.

ELECTRICAL WIRING INSTRUCTIONS

Step 6.



Make the correct wire connections to operationalise the fan.

Adjust the canopy as required

Color codes of the wires may vary from region to region. Please check your state or country notifications regarding the same.

WARNING

Any connection to wires must be securely sealed using electrical insulation tape to prevent electric shock or fire hazard.

Avoid pinching of wires between the shackle kit, down rod and ceiling hook assembly to prevent electric shock or fire hazard.

USING YOUR CEILING FAN

Congratulations! You have successfully installed your new ceiling fan using the instructions provided in this guide.

- 1 Restore the electrical power.
- 2 Power 'ON' the ceiling fan using switch on the panel in the room. The LED indicator flashes 'ON' when power supply is restored.

WARNING

The performance of the fan gets affected if the regulator is not bypassed, and may lead to speed variations, restarting or low speed. Eliminate regulators by using a direct connection from the switch to the fan.

- 3 Use your remote to operate the ceiling fan.
- 4 If you are leaving the room or facility for a long duration or on holiday, then power 'OFF' the ceiling fan using the switch on the panel.

HOW TO USE YOUR REMOTE

Remote key	Function	Description	LED status
1	Speed 1	Sets the fan to speed 1	One LED will glow for 1 sec.
2	Speed 2	Sets the fan to speed 2	Two LEDs will glow for 1 sec.
3	Speed 3	Sets the fan to speed 3	Three LEDs will glow for 1 sec.
4	Speed 4	Sets the fan to speed 4	Four LEDs will glow for 1 sec.
5	Speed 5	Sets the fan to speed 5	Five LEDs will glow for 1 sec.
B	Boost Speed	Sets the fan to boost	All LEDs blink thrice.

Longlasting AAA batteries are used in the remote

WARNING

DO NOT use the fan regulator as the fan is operated using a remote.

Eliminate the regulator by using a direct connection from the switch to the fan.

SLEEP mode adds smart comfort, as the temperature drops over the night and if you wish to auto-reduce the speed.

With TIMER mode, you can switch OFF/ON the fan automatically after set hours to further save energy.

Remote key	Function	Description	LED status
Timer	OFF Timer/ Wakeup Timer	• Fan automatically switches OFF/ON after the set hours (1, 2, 3 & 6 Hrs).	Timer1 - One LED blinks twice. Timer2 - Two LEDs blinks twice. Timer3 - Three LEDs blinks twice.

Remote key	Function	Description	LED status
		• Number of LEDs suggest number of hour set. • Press the Timer key 5 times, to disable Timer or once after 6 Hr timer indication	Timer6 - All LEDs blinks twice. Timer Disable - Odd and Even LEDs blink in a pattern thrice.
Sleep	Reduce speed of fan by 1 every 2 hours for 4 hours	•Sleep mode works for 4 Hours. Speed is reduced by 1 every 2 hours. Afterwards, the fan continues to run on a reduced constant speed. Fan speed will not reduce below speed 1.	Sleep Mode Enable - Four LEDs in square blink twice. Sleep Disable - Odd and Even LEDs blink in a pattern thrice.
LED	LED ON/OFF	Turn ON/OFF LEDs.	All six LEDs will glow.

Note: Sleep mode will not work if fan is off.

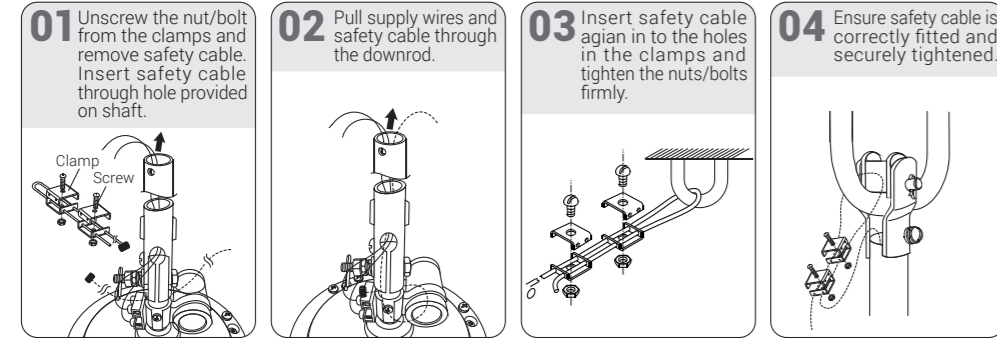
TROUBLESHOOTING

Your ceiling fan is designed to be longlasting with a strong body and well-tested electronics, however if any problem arises, please refer to the guidelines shared. Please contact a local electrician or service engineer if you need any help.

Problem	Cause	Solution
Fan does not start	Fuse down/ MCB shut off	Check fuse of the MCB on the mains.
	Loose wire connection to fan or to the switch on the panel.	Check the wire connection and restore the connection
	Fan still does not start Regulator is connected to the fan.	Please contact the service number provided. It is recommended that the regulator should not be connected to this ceiling fan and it is instead controlled using the remote provided with it.
Fan making noise	Bearing inside the housing has problems.	This ceiling fan is designed to be longlasting. However, after many years of use the bearing may wear off and may need to be replaced.
	Fan blades are not seated properly on the motor. Shackle kit rattling.	Make sure the blades are properly fastened to the body. Loose connection may cause accidents. Make sure that the screws and nuts are securely fastened along with washer provided.
	Canopy is touching the body Canopy is touching the ceiling.	Make sure that the canopy and the wire that connects the fan are not touching the body of the motor. Make sure that the canopy is not touching the ceiling.
Fan is wobbling	Nut holding motor shaft and the down rod is loose. Nut holding down rod and shackle kit is loose. Screws in shackle kit and the ceiling hook are loose.	Securely fasten the nut and bolts along with washers as per the instructions provided in this manual.
	Fan blades are not seated properly on the motor. Fan blades are out of balance.	A common mistake is fixing the blade in the reverse direction. Please set it right and securely fasten the screws. Make sure that the blades are not bent during cleaning. Also, interchanging them helps balance the blades.
LED blinking continuously	Regulator not bypassed.	Make sure the regulator is eliminated from the connection.
Restart & speed variation	Blades have wrong sweep.	Check the sweep of blades with the fan sweep before assembling.

INSTALLATION INSTRUCTIONS FOR SAFETY CABLE

- Safety cable is provided as an additional safety feature.
- Secure safety cable to the ceiling hook as shown below.



IMPORTANT NOTE

Ensure proper installation and positioning of cable clamp as shown in Fig. A

Improper installation reduces the efficiency of the connection as much as 40 percent.

Inspect safety cable connection and clamps fitted periodically at least once in a year.

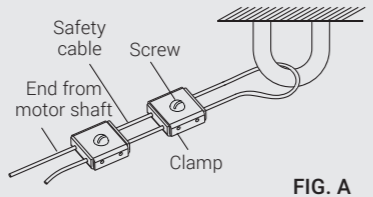


FIG. A

CAUTION

The safety cable must not be placed between the rubber roller and hook. It is advisable to fix safety cable on the separate hook if available as an extra safety as illustrated in Fig. B

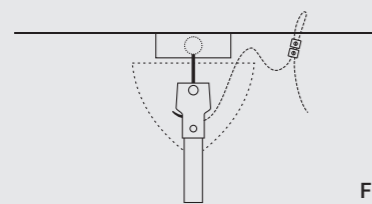


FIG. B

MAINTENANCE

Periodic cleaning of your ceiling fan is the only maintenance needed. When cleaning, use only a soft lint-free cloth or brush to avoid scratching the smooth paint finish. You can use moist cloth to remove stains if any. However, do not use water directly. Abrasive cleaning agents are not required and should be avoided to prevent damage to the outer finishing.

WARNING

Do not use water when cleaning your ceiling fan. It could damage the motor by causing short-circuit and create the possibility of an electrical shock.

Do not bend the blades while cleaning. A bend in the blade may result in unstable fixing and affect the air delivery.

ATOMBERG TECHNOLOGIES PVT LTD

Corporate office: WeWork 13th Floor, 247 Park, Hindustan C Bus Stop Lal Bahadur Shashtri Road, Gandhi Nagar, Vikhroli West 400 079.

Manufacturing unit 1: Mind Space Shelters, Vithai Developers LLP Gate No 51-59, Bhamboli, Chakan, Pune 410 507.



Customer's Name:
Address:

Phone number:
Product number:

Vendor Seal / Stamp with Date

To register your warranty / For any further assistance
www.atomberg.com or 84484 49442

HOW TO REGISTER THE WARRANTY?

BY WEB PROCESS

- Log on to www.atomberg.com
- Navigate to "support" tab -> click on "register-warranty-card"
- Enter product serial number/barcode (mentioned on the warranty card/box) and other details.

BY CALL

- Call us on "84484 49442"
- Select your language
- Select '1' for warranty registration
- You will receive a warranty link via 'SMS' or a call back for remaining details

Scan the QR Code for Warranty Registration



FAN LIMITED WARRANTY

Atomberg Technologies Private Limited warrants that this product is to be free from any manufacturing defects in material and workmanship under normal use from the date of purchase as evidenced by the purchase receipt. This warranty provided by Atomberg Technologies Private Limited to you is for a period of 2+1* Years.

WARRANTY EXCLUSIONS

This warranty does not include and expressly excludes:

- Warranty duration:

Part Name	Warranty duration from Date of Purchase**
Motor**	2+1* (Year)
Accessories: Downrod, Canopy Shackle kit, Battery, etc.	Against transit damage within 7 days of delivery
Remote, Blade**	1 Year

This warranty card is an addition and does not imply any loss of statutory rights.

*After warranty card registration

**Against Manufacturing defects

Note: All the transit damage or missing items cases should be registered within 7 days of product delivery to pass the warranty claim.

- In case of Remote model:
 - 1) The fan will not function if the input voltage is more than 285V.
 - 2) The fan will not function with Square type inverter if the Voltage is more than 285V and 400V peak.
- In case of Regulator model:
 - 1) The fan will not function if the input voltage is more than 285V.
 - 2) The fan will not function with Square type inverter if the Voltage is above 285V and 400V peak.
 - 3) For a better performance use step regulator as the fan will not operate at a lower range if used with a non-compatible Stepless (Triac based) regulator
- To know more about warranty terms and latest guidelines kindly visit related section on www.atomberg.com
- Loss or damage to the motor or any accessory caused by normal wear and tear rather than due to defect in materials or workmanship.
- Loss or damage resulting from improper installation or other failure to comply with instructions given in your owner's manual.
- Loss or damage resulting from conditions beyond our reasonable control, including without limitation, repairs not made at our factory or authorized service provider, use of parts or accessories not provided to you as part of this warranty by our factory or authorized service providers or mishandling, unreasonable use, misuse, abuse, modifications or other damages caused by you or a third party to your fan while not in our possession.
- The warranty explicitly provided for herein is the sole warranty provided in connection with the product and no other warranty, expressed or implied, is provided.
- ATOMBERG assumes no responsibility for any other claims, especially ones not stated in this warranty.
- The company's liability will never exceed the value of the product.
- The company will not be responsible for delay in repair/service due to unavoidable circumstances.
- This warranty is only valid within the states and union territories of India.
- No other written or oral warranties apply, and no other agent, employee, dealer or any other person is authorized to give any warranties (explicit or otherwise) on behalf of Atomberg.

How to avail this service under warranty terms:

- STEP 01** Registering your barcode is mandatory to avail warranty services. Your sales bill with full purchase details and this fully completed warranty card must be presented when warranty services are required.
- STEP 02** This warranty service must be performed at our factory, or with authorized service providers who are affiliated to the ATOMBERG warranty system.
- STEP 03** When returning the product for warranty service, please pack it carefully, enclose the bill, the warranty card and the instructions for repair.
- STEP 04** If the warranty card is lost, then it cannot be re-issued.



CEILING FAN RENESA



INSTRUCTION MANUAL

IMPORTANT NOTE:

Read this manual carefully before installing or operating your new Atomberg RENESA Ceiling Fan. Ensure you save this manual for future reference.

*Above image is for representation purpose only. Actual model may vary.