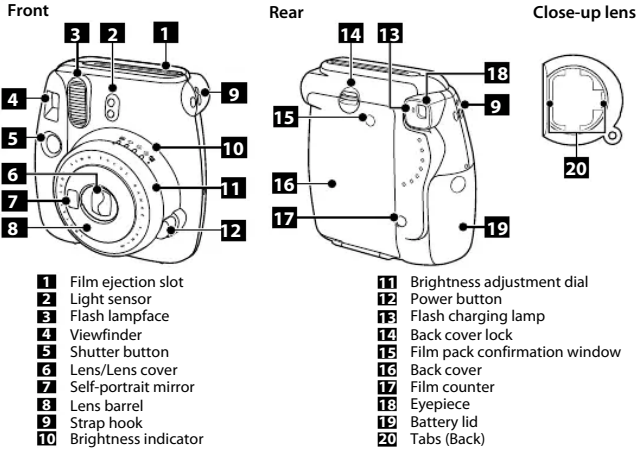


FUJIFILM instax mini 9 INSTANT CAMERA

CPL10B112-101

Parts Name

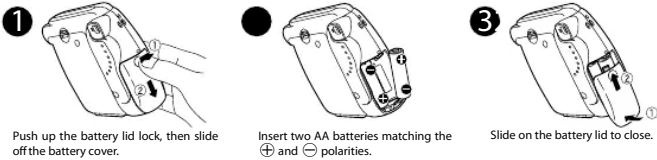


- | | |
|-------------------------|----------------------------------|
| 1 Film ejection slot | 11 Brightness adjustment dial |
| 2 Light sensor | 12 Power button |
| 3 Flash lampface | 13 Flash charging lamp |
| 4 Viewfinder | 14 Back cover lock |
| 5 Shutter button | 15 Film pack confirmation window |
| 6 Lens/Lens cover | 16 Back cover |
| 7 Self-portrait mirror | 17 Film counter |
| 8 Lens barrel | 18 Eyepiece |
| 9 Strap hook | 19 Battery lid |
| 10 Brightness indicator | 20 Tabs (Back) |

Inserting Batteries

Caution

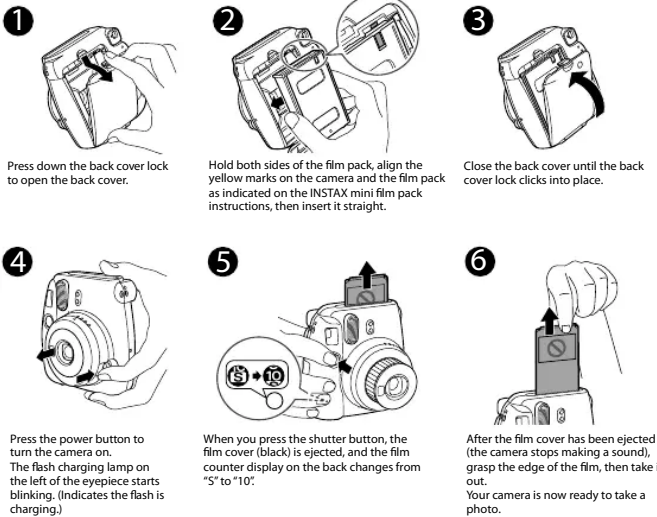
- Use new alkaline batteries of the same brand/type only (AA only).
- Do not use any batteries other than alkaline batteries.
- Replace both batteries in the following cases:
 - When the red lamp on viewfinder lights
 - When no lamp lights or blinks even though the power is turned on
- About 100 pictures (roughly 10 packs of INSTAX mini film) can be taken with new batteries.
- The battery performance may be reduced when it is cold. In this case, warm up the batteries to room temperature before using this camera.
- Use the supplied batteries for validation.



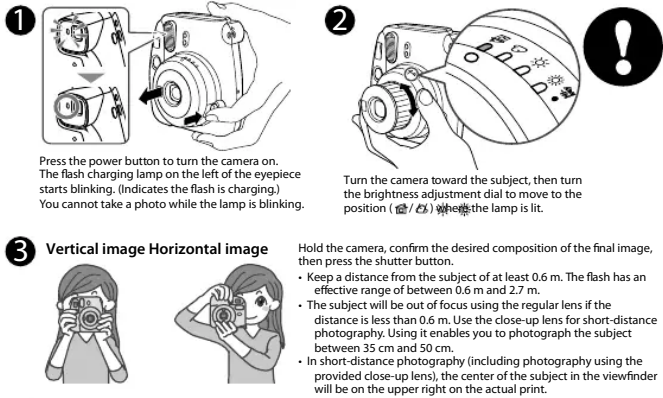
Loading the INSTAX mini Film Pack

Caution

- Make sure that the batteries are installed before loading the film pack.
- Avoid direct sunlight when loading the film pack.
- Do not use any film other than FUJIFILM INSTAX mini film.
- When you load the film pack, never press the two rectangular holes on the back.
- Do not open the back cover until you have used up the film; otherwise, the rest of the film is exposed and turns white. The film can no longer be used.**
- Never use a film pack beyond its shelf life; otherwise, it may damage the camera.
- For details, refer to the instructions and warnings on FUJIFILM INSTAX mini film.

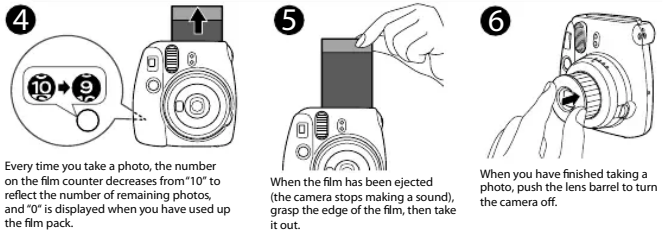


[IMPORTANT] Taking Pictures



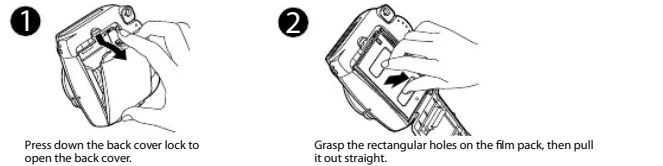
Caution on holding the camera

- For horizontal image, hold the camera with the flash lampface at the top.
- Do not take pictures where flash photography is forbidden.
- Be careful so that your fingers or the strap do not cover the light sensor, flash lampface, flash, lens, or film ejection slot.
- Do not grasp the lens barrel when positioning the camera; otherwise, the finished print may not look as expected.
- Look into the viewfinder so that the "0" mark appears in the center.
- Be careful not to touch the lens surface when you press the shutter button.



Unloading the INSTAX mini film pack

When "0" is displayed on the film counter, unload the film pack following the procedure below and as indicated on the INSTAX mini film pack instructions.



Using the Close-Up Lens

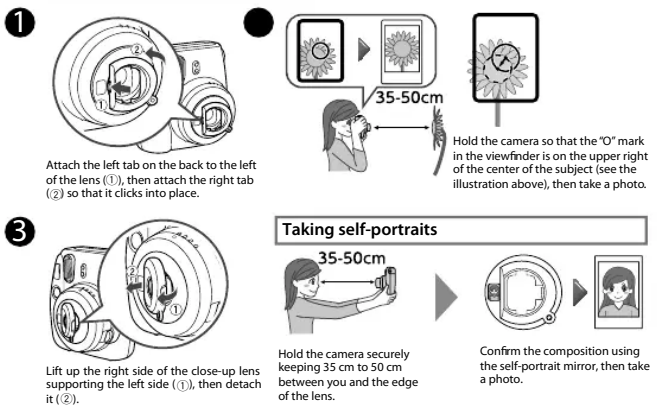
You can photograph objects close-up, and can photograph yourself using the self-portrait mirror.

WARNING

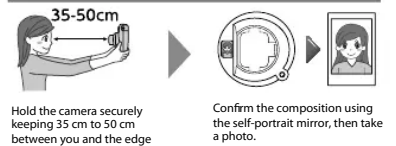
- Do not look through the close-up lens at the sun or other strong light. Blindness or vision problems could result.

Caution

- Do not leave the close-up lens in places exposed to strong sunlight. Personal injury or fire could result if the lens should accidentally concentrate the sunbeams on an object or a person.
- Switch off the camera before you attach/detach the close-up lens.
- Never turn the close-up lens when you attach/detach it; otherwise, the tabs on the back may be broken.**

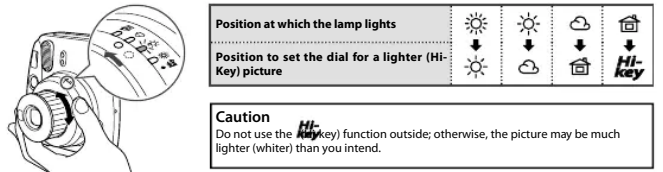


Taking self-portraits



[IMPORTANT] Taking a lighter (Hi-Key) picture

This camera automatically determines an appropriate brightness for taking any given picture, and informs you by lighting the corresponding lamp. To take a lighter (Hi-Key) picture, set the position of the brightness adjustment dial to the position of the mode darker than the mode for which the lamp on the dial lights.



SPECIFICATION

Film	FUJIFILM INSTAX mini film
Picture Size	62 mm x 46 mm
Viewfinder	Real
Shooting range	0.6 m and beyond
Shutter Speed	1/60 sec.
Exposure Control	Manual
Film Feeding	Out Automation
Film Developing Time	Approx. 10 min.
Flash	Color (White)
Power Supply	Two AA (Alkaline)
Auto power off time	5 min.
Others	Exposure counter (Number of photos taken)
Dimensions	116 mm x 71.5 mm x 30 mm
Weight	307 g (without battery)
* Specifications are subject to change without notice.	

TROUBLE SHOOTING

During operation	
Problems Possible	Causes
The shutter release won't trip.	1. The shutter release button is not pressed correctly. 2. The battery is not inserted correctly. 3. The battery is exhausted. 4. The camera is not turned on.
The lamp on the viewfinder blinks and the shutter release won't trip.	1. The battery is not inserted correctly. 2. The battery is exhausted.
The film pack won't load into your camera, or won't load into your camera smoothly.	1. The film pack is not inserted straight. 2. The film pack is not the correct type.
All lamps on the brightness adjustment dial blink at the same time.	1. The camera is not turned on. 2. The battery is not inserted correctly. 3. The battery is exhausted.
The red lamp on the viewfinder lights up.	1. The battery is not inserted correctly. 2. The battery is exhausted.

Printed pictures

Problems Possible	
The finished print looks over exposed. (White in color)	1. The camera is not turned on. 2. The battery is not inserted correctly. 3. The battery is exhausted. 4. The camera is not turned on. 5. The camera is not turned on. 6. The camera is not turned on. 7. The camera is not turned on. 8. The camera is not turned on. 9. The camera is not turned on.
The finished print looks under exposed. (Dark)	1. The camera is not turned on. 2. The battery is not inserted correctly. 3. The battery is exhausted. 4. The camera is not turned on. 5. The camera is not turned on. 6. The camera is not turned on. 7. The camera is not turned on. 8. The camera is not turned on. 9. The camera is not turned on.
The picture is out of focus.	1. The camera is not turned on. 2. The camera is not turned on. 3. The camera is not turned on.
The picture is blurred.	1. The camera is not turned on. 2. The camera is not turned on. 3. The camera is not turned on.
The subject in the viewfinder has shifted in finished print.	1. The camera is not turned on. 2. The camera is not turned on.

Information for traceability

Manufacturer: FUJIFILM Corporation
 Address, City: 7-3, Akasaka
 Country: JAPAN
 Authorized representative
 Address, City: Dusseldorf
 Country: Germany

