

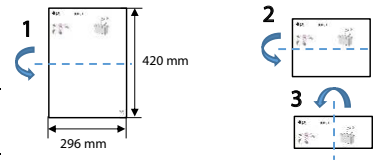
Printing Specification

1. Specification

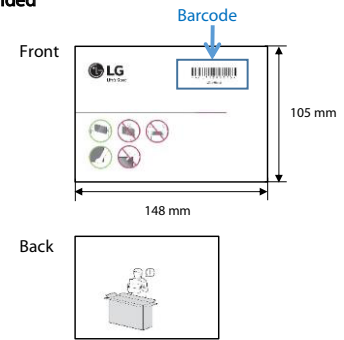
Models	1. Model Name:	32LQ630BPSA
	2. Suffix:	TR
	3. Part No:	MFL71833920
	4. REV	REV00
SIZE	5. Number of pages	16
	6. Folded/Unfolded	3 Folded
	7. Trim size (W x H)_Unfolded (mm)	296 x 420 (+/- 5)
COVER	8. Trim size (W x H)_folded (mm)	148 x 105 (+/- 5)
	9. Bindery	-
INNER	10. Color (Cover)	-
	11. Paper (Cover)	-
	12. Weight (cover) (g/m ²)	-
	13. Color (inner)	4 (CMYK)
	14. Paper (inner)	Wood free
	15. Weight (inner) (g/m ²)	70 (+/- 10)
	16. Coating	No
	17. Thomson	No
	18. Sub-material	No
	19. Languages	ENG

1.1 Folding / Cover

Folding Step



Folded



2. Origin Notification

<p>www.lg.com</p> <p>P/No : MFL69707613 (1708-REV03)</p> <p>Printed in Korea ←</p> <p>Copyright © 2017 LG Electronics Inc. All Rights Reserved.</p>	<p>Changes the Country name.</p> <p>Printed in [Country Name]</p>	<p>[Country Name]</p> <p>LGEIL: India</p>
NOTE	<p>[Restriction of Hazardous Substances]</p> <p>Hazardous substances on this product should be satisfied by substance regulation of Level A-I, A-II, SVHC according to LG(52)B-5011 standard. Especially, Part should be followed and controlled the following specification.</p> <p>(1) Hazardous substances test report should be submitted when part certification test and first mass production.</p> <p>(2) Especially, Don't use or contain lead (Pb) and cadmium (Cd) in ink.</p>	

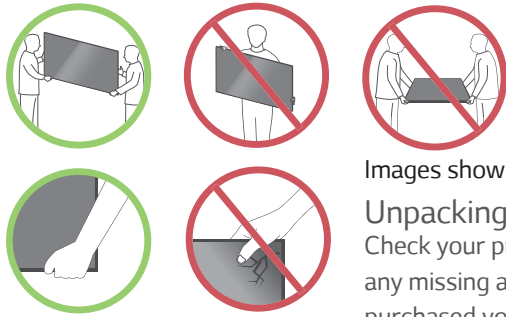
3. History

REV07					
REV06					
REV05					
REV04					
REV03					
REV02					
REV01					
REV00	12/06/2021			Checked :	Aditya.K
				Approved :	Nitin Hase
Rev. Number	Date	Description	ECO Number	Owner	Santosh.C



32LQ63*

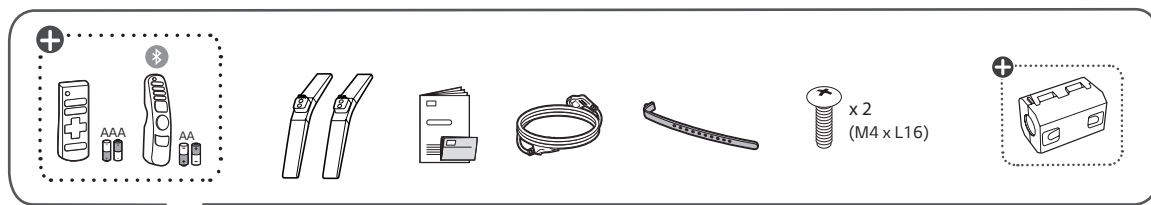
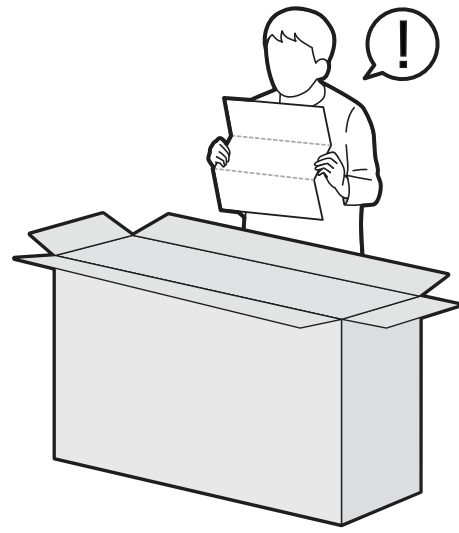
Quick Start Guide



Images shown in manual may vary depending on model

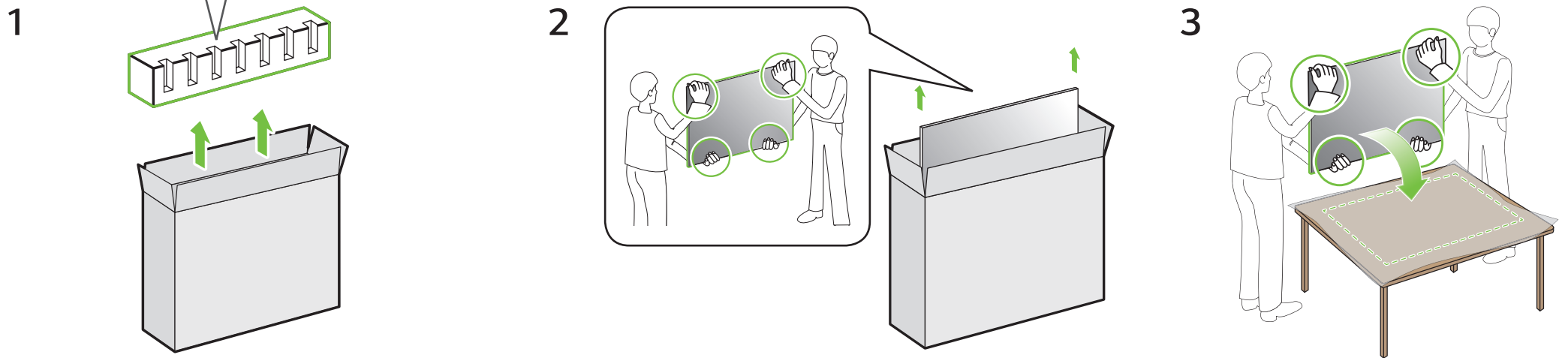
Unpacking

Check your product box for the following items. If there are any missing accessories, contact the local dealer where you purchased your product. The illustrations in this manual may differ from the actual product and item.



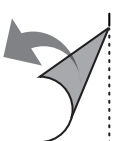
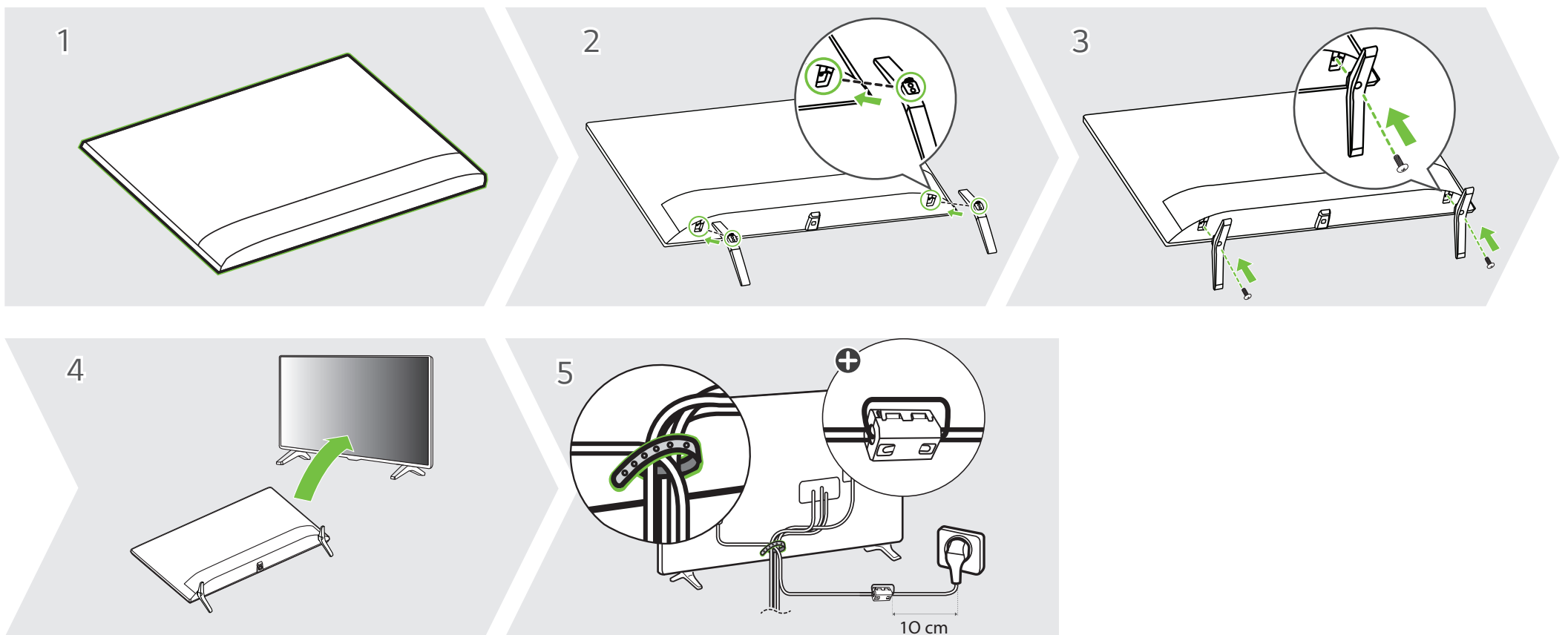
+ : Depending on model

+ : Depending on country



CAUTION

Image shown may differ from your TV
When attaching the stand to the TV set, place the screen facing down on a cushioned table or flat surface to protect the screen from scratches.



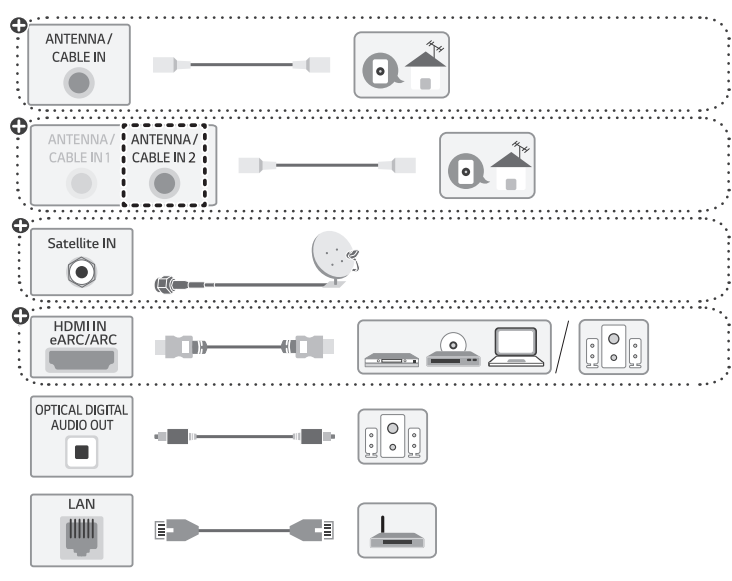


ARC (Audio Return Channel)
An external audio device that supports SIMPLINK and ARC must be connected using HDMI IN eARC/ARC port

When connected with a high-speed HDMI cable, the external audio device that supports ARC outputs SPDIF audio without additional audio cable and supports the SIMPLINK function

NOTE

- Do not look into the optical output ports, looking at the laser beam may damage your vision
- Audio with ACP (Audio Copy Protection) function may block digital audio output.

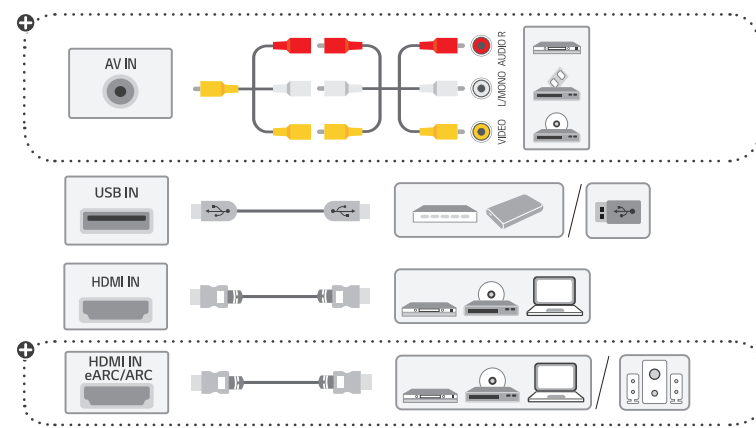


ARC (Audio Return Channel)
An external audio device that supports SIMPLINK and ARC must be connected using HDMI IN eARC/ARC port

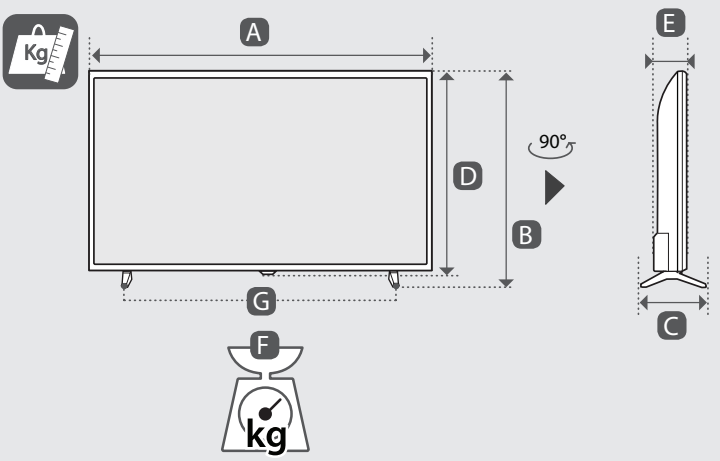
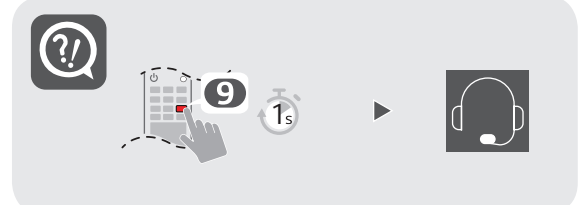
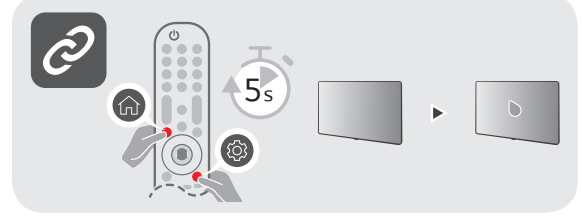
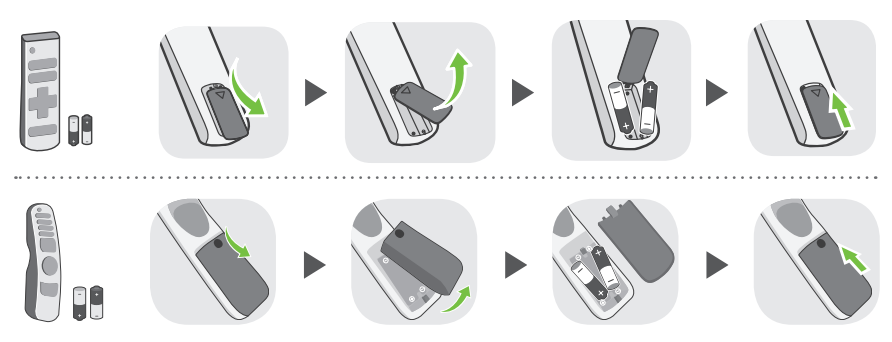
When connected with a high-speed HDMI cable, the external audio device that supports ARC outputs SPDIF audio without additional audio cable and supports the SIMPLINK function

NOTE

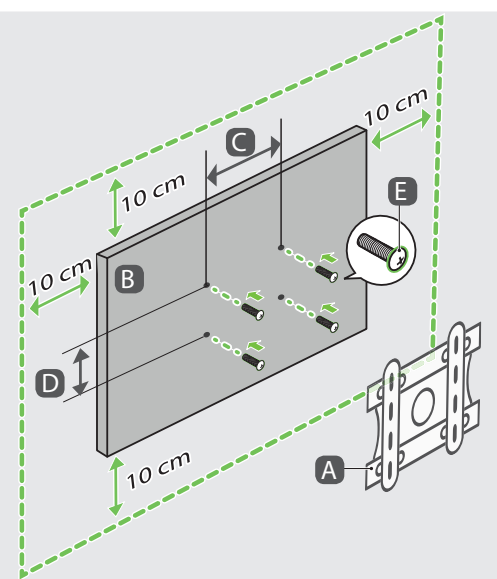
- Some USB Hubs may not work, if a USB device connected using a USB Hub is not detected, connect it to the USB port on the TV directly
- Connect the external power source if your USB is needed.



NOTE
Image shown may vary depending on model.
All connection cables & devices shown in the picture are not included along with the product.



	A	B	C	D	E	F	F-G
	(mm)					(kg)	
32LQ630B6LB 32LQ630BPSA	736	464	180	437	82.9	4.7	4.65
32LQ635BPSA 32LQ6360PSA 32LQ636BPSA	736	464	180	437	82.9	5.1	5.05
Power requirement				AC 100-240 V - 50 / 60 Hz			



A	B	C x D (mm)	E
WallMount	32LQ63*	200 x 200	M6



- Read **Safety and Reference**.
- The Analog Gender adapter can be purchased separately at Customer Service.

+ : Depending on model