



## CEILING FAN EFFICIO



# INSTRUCTION MANUAL

### IMPORTANT NOTE:

Read this manual carefully before installing or operating your new Atomberg EFFICIO Ceiling Fan. Ensure you save this manual for future reference.

**WARNING**  
DO NOT use the fan regulator as the fan is operated using a remote.  
Eliminate the regulator by using a direct connection from the switch to the fan.

SLEEP mode adds smart comfort, as the temperature drops over the night and if you wish to auto-reduce the speed.

With TIMER mode, you can switch off the fan automatically after set hours to further save energy.

Remote key	Function	Description	LED status
Power	ON /OFF	Switches on the fan Switches off the fan,	Switched OFF Glows Steady
1-5	Fan speed control	Gradual change of speed from low to high	Blinks once
Boost	Boost mode	Boost mode speed	Blinks once
Timer 1-3 & 6	Timer OFF	Fan automatically switches off after the set hours (1,2,3 & 6)	Blinks once
Sleep	Sleep mode	After every four hours speed will reduce by two steps. Speed will not reduce below 1. Afterwards, the fan continues to run on a reduced constant speed	Blinks once

Note: Sleep and Timer mode do not work when the fan is off.

### TROUBLESHOOTING

Your ceiling fan is designed to be longlasting with a strong body and well-tested electronics, however if any problem arises, please refer to the guidelines shared. Please contact a local electrician or service engineer if you need any help.

Problem	Cause	Solution
Fan does not start	Fuse down / MCB shut off	Check fuse of the MCB on the mains.
	Loose wire connection to fan or to the switch on the panel	Check the wire connection and restore the connection
	Fan still does not start	Please contact the service number provided.
	Regulator is connected to the fan	It is recommended that the regulator should not be connected to this ceiling fan and it is instead controlled using the remote provided with it.
Fan making noise	Bearing inside the housing has problems	This ceiling fan is designed to be longlasting. However, after many years of use the bearing may wear off and may need to be replaced.
	Fan blades are not seated properly on the motor	Make sure the blades are properly fastened to the body. Loose connection may cause accidents.
	Shackle kit rattling	Make sure that the screws and nuts are securely fastened along with washer provided.
	Canopy is touching the body	Make sure that the canopy and the wire that connects the fan is touching the body of the motor.

Problem	Cause	Solution
Fan is wobbling	Nut holding motor shaft and the down rod is loose	Securely fasten the nut and bolts along with washers as per the instructions provided in this manual.
	Nut holding down rod and shackle kit is loose	Securely fasten the nut and bolts along with washers as per the instructions provided in this manual.
	Screws in shackle kit and the ceiling hook are loose	Securely fasten the nut and bolts along with washers as per the instructions provided in this manual.
	Fan blades are not seated properly on the motor	A common mistake is fixing the blade in the reverse direction. Please set it right and securely fasten the screws.
	Fan blades are out of balance	Make sure that the blades are not bent during cleaning. Also, interchanging them helps balance the blades.
Restart/speed variation	Regulator not bypassed	Make sure the regulator is eliminated from the connection
	Blades have wrong sweep	Check the sweep of blades with the fan sweep before assembling

### MAINTENANCE

Periodic cleaning of your ceiling fan is the only maintenance needed.

When cleaning, use only a soft lint-free cloth or brush to avoid scratching the smooth paint finish. You can use moist cloth to remove stains if any. However, do not use water directly. Abrasive cleaning agents are not required and should be avoided to prevent damage to the outer finishing.

**WARNING**  
Do not use water when cleaning your ceiling fan. It could damage the motor by causing short-circuit and create the possibility of an electrical shock.  
Do not bend the blades while cleaning. A bend in the blade may result in unstable fixing and affect the air delivery.



### ATOMBERG TECHNOLOGIES PVT LTD

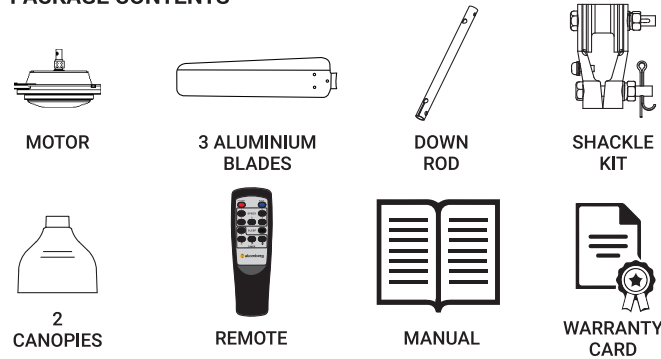
**Corporate office:** Rupa Solitaire, Office No. 1205  
Millenium Business Park, Mahape, Navi Mumbai 400 710.

**Manufacturing unit:** Plot No D-130 B, TTC Industrial Area  
Shirawane, Navi Mumbai 400 706.

Dear Customer,

Congratulations on the purchase of ATOMBERG'S super-efficient EFFICIO ceiling fan. Please read this guide before using this product. It would also be advisable to store this guide safely for future reference.

## PACKAGE CONTENTS



**WARNING**  
Do not install or use fan if any part is damaged or missing.  
This product is designed to be used only with those parts or accessories supplied with this product and/or any accessories designed specially for use with this product by Atomberg. Any such use of other parts or accessories may turn the product warranty null and void, and may result in personal injury or property damage as well.

## SAFETY INSTRUCTIONS

Be careful of the fan and blades while cleaning, painting, or working near the fan. Always turn off the power to the ceiling fan before servicing.

Do not put your hand or any other objects near the fan blades while the fan is running.

Do not modify the blade design to change the air flow.

Product must be used along with the speed control unit/remote provided with the fan. Do not use standard regulator used for ordinary fans.

**WARNING**  
**Observe the following to reduce the risk of fire, electric shock or injury:**  
Only use this unit in the manner intended by Atomberg. If you have any questions regarding the product, please contact Atomberg.  
Before servicing or cleaning, switch off the main power panel and switch.  
Wiring of the fan must be done only by a qualified and certified electrician.

## FEATURES

India's most energy-efficient EFFICIO ceiling fan • More than 65% energy saving as compared to an ordinary fan • Highest service value (air delivery/power consumed) in India • Runs 3 times longer on inverter resulting in longer battery runtime • Smart sensorless algorithm for greater reliability • No heating of fan even after long hours of runtime, resulting in an extra-long life • Consistent speed even at low voltages • Easy speed controls using a smart remote • LED indications for easy remote use • TIMER feature automatically switches off the fan • SLEEP mode reduces the fan speed after a preset duration and saves energy • Full copper motor and double ball-bearing for better stability and longer life • Aluminum body and blade, resulting in zero rust • Zinc-plated parts and accessories for rust-free life • Protective coating over electronics for better resistance against moisture • All fans are tested for durability in extreme conditions before shipping.

## BIG ENERGY SAVINGS

Atomberg is India's most energy-efficient ceiling fan. A super-efficient BLDC motor technology is used, which consumes very little energy. Atomberg fans consumes just 1/3rd of the power used by ordinary induction fans. Ordinary induction fans run on 75watts, whereas Atomberg fans run on just 28watt at full speed.

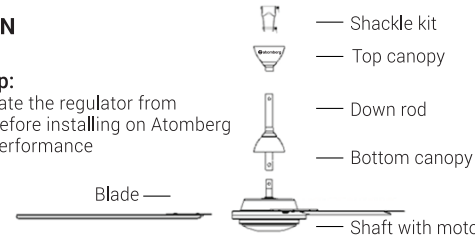
There is huge saving potential for households, and institutions such as hospitals, colleges, schools and commercial spaces.

## INSTALLATION

### Assembly:

#### Mandatory Step:

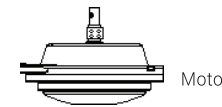
Bypass or eliminate the regulator from the connection before installing on Atomberg fan for optimal performance



The picture shown above depicts the exact order of placement of various parts.

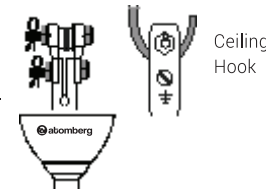
### Step 1.

Carefully remove the motor from the box and keep it on soft padding to prevent it from getting scratched.



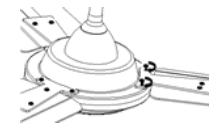
### Step 2.

Insert the canopy into the shaft and securely, attach the shackle to the hanger or ceiling hook using the screws provided with the package. Fasten the nut, and make sure that you fit the safety nut, washer and the R-pin to prevent slipping. Adjust the top canopy so that it covers both the assembly and the connection.



### Step 3.

Align the holes on the blade shank with the motor holes. Securely fasten the blades with the screws and washer provided.

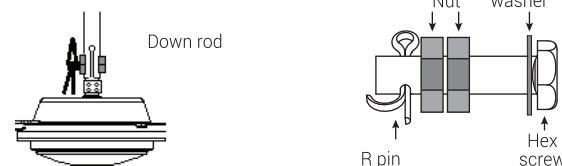


**WARNING**  
If the blades are not secured properly with the screws and the washer, it may cause injury during operation. Also, an imbalanced fan may cause damage to the motor and reduce the lifetime of the fan.  
Any damage caused by incorrect installation and wrong practices followed while connecting the fan are not covered under the warranty terms. Please check the warranty terms in detail.  
Do not turn on the fan until the blades are securely fastened to the ceiling fan.

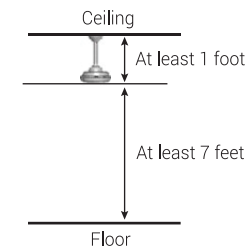
## HOW TO HANG THE FAN

### Step 4.

Insert the screw to assemble the shaft and the down rod. Insert the washer, nut and R-Pin in the sequence depicted in the illustration below. Pull down the canopy to cover the PCB box.



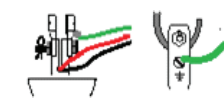
### Step 5.



**WARNING**  
The fan blade must be hung with at least 1 foot of clearance from the ceiling for optimal performance and safety.  
Any object next to the fan must be at least 2 feet away from the tip of the fan blade to reduce chances of risk or injury.  
The fan must be hung with at least 7 feet of clearance from the floor to the blades.

## ELECTRICAL WIRING INSTRUCTIONS

### Step 6.



Make the correct wire connections to operationalise the fan.

Adjust the canopy as required

Color codes of the wires may vary from region to region. Please check your state or country notifications regarding the same.

**WARNING**  
Any connection to wires must be securely sealed using electrical insulation tape to prevent electric shock or fire hazard.  
Avoid pinching of wires between the shackle kit, down rod and ceiling hook assembly to prevent electric shock or fire hazard.

## USING YOUR CEILING FAN

Congratulations! You have successfully installed your new ceiling fan using the instructions provided in this guide.

- 1 Restore the electrical power.
- 2 Power 'ON' the ceiling fan using switch on the panel in the room. The LED indicator flashes 'ON' when power supply is restored.

**WARNING**  
The performance of the fan gets affected if the regulator is not bypassed, and may lead to speed variations, restarting or low speed. Eliminate regulators by using a direct connection from the switch to the fan.

- 3 Use your remote to operate the ceiling fan.
- 4 If you are leaving the room or facility for a long duration or on holiday, then power 'OFF' the ceiling fan using the switch on the panel.

## HOW TO USE YOUR REMOTE



The remote provided along with your ceiling fan is ergonomically designed. The soft controls on the remote are longlasting.

- BOOST MODE
- SPEED CONTROL
- SLEEP MODE
- TIMER MODE

Longlasting AAA batteries are used in the remote