

**PHILIPS**

Tower Fan

5000 Series

CX5535



**User manual**

# Contents

<b>1</b>	<b>Important</b> .....	<b>1</b>
	Safety .....	1
	Electromagnetic fields (EMF) .....	3
	Recycling .....	4
<b>2</b>	<b>Your Tower Fan</b> .....	<b>5</b>
	Product overview .....	5
	Controls overview .....	6
	Remote control overview .....	7
<b>3</b>	<b>Getting started</b> .....	<b>8</b>
	Installing the fan base .....	8
	Using the remote control for the first time .....	8
	Using the aroma function .....	9
<b>4</b>	<b>Using the Tower Fan</b> .....	<b>10</b>
	Turning on and off .....	10
	Normal mode: Changing the fan speed manually .....	10
	Switching the mode .....	11
	Using the timer function function .....	11
	Rotation .....	12
	Setting the child lock .....	13
	Using the light on/off function .....	13
<b>5</b>	<b>Cleaning and maintenance</b> .....	<b>13</b>
<b>6</b>	<b>Storage</b> .....	<b>14</b>
<b>7</b>	<b>Troubleshooting</b> .....	<b>14</b>
<b>8</b>	<b>Guarantee and service</b> .....	<b>15</b>

# 1 Important

---

## Safety

Read this user manual carefully before you use the appliance, and save it for future reference.

## Danger

- Do not let any liquid or flammable detergent enter the appliance, to avoid electric shock and/or a fire hazard.

## Warning

- This appliance can be used by children aged from 8 years and above and persons with reduced physical, sensory or mental capabilities or lack of experience and knowledge if they have been given supervision or instruction concerning use of the appliance in a safe way and understand the hazards involved.
- Children of less than 3 years should be kept away unless continuously supervised.
- Children shall not play with the appliance.
- Cleaning and maintenance shall not be made by children without supervision.
- Do not block the air inlet and outlet, e.g. by placing items on the air outlet or in front of the air inlet.
- Do not insert fingers, sticks or other objects into the machine, in order to avoid electric shocks, physical injury or fire.
- Do not use the appliance near gas appliances, fireplaces.
- Do not spray any flammable materials such as insecticides or fragrance around the appliance.
- Do not use if there are visible signs of damage to the device, the plug, the power cord.
- Do not use this device if it has been dropped.
- If the power cord is damaged, you must have it replaced by Philips, a service center authorized by Philips, or similarly qualified persons in order to avoid a hazard.
- **WARNING:** Keep new and used batteries out of the reach of children. Swallowing can lead to chemical burns, perforation of soft tissue, and death. Severe burns can occur within 2 h of

ingestion. If you think a battery might have been swallowed or placed inside any part of the body, seek medical attention immediately.

- **WARNING:** Dispose of used batteries immediately and safely.

### Caution

- The device must not be located immediately below a socket outlet.
- Always place and use the appliance on a dry, stable, and horizontal surface.
- Do not use the appliance in surroundings with high humidity such as the bathroom, toilet, kitchen, swimming pool, or any outdoor environment.
- Do not sit or stand on the appliance. Do not knock against appliance. Do not place anything on top of the appliance.
- Always unplug the appliance when you want to move, clean appliance, replace the filter or carry out other maintenance. After assembly, do not remove the guards during use or cleaning.
- The appliance is only intended for household use under normal operating conditions.
- Only operate this remote control with type of disposable battery specified in the user manual.
- Do not recharge non-rechargeable batteries.
- Keep product and batteries away from fire and do not expose them to direct sunlight or high temperatures.
- If the product becomes abnormally hot or smelly, or changes color, stop using the product and contact Philips.
- Do not place remote control and their batteries in microwave ovens or on induction cookers.
- Do not modify, pierce, damage or dismantle the remote control or battery to prevent batteries from heating up or releasing toxic or hazardous substances. Do not short-circuit, overcharge or reverse charge batteries.
- If batteries are damaged or leaking, avoid contact with the skin or eye. If this occurs, immediately rinse well with water and seek medical care.

- When you handle batteries, make sure that your hands, the remote control and the batteries are dry.
- Insert 2 Alkaline, type LR03-AAA-1.5V batteries with the + and - poles pointing in the direction indicated in the battery compartment or holder.
- Do not mix different brands and types of batteries, do not mix new and used batteries and do not use batteries with different date codes.
- Remove batteries from the remote control if you are not going to use it for some time.
- To avoid accidental short-circuiting of batteries after removal, do not let battery terminals come into contact with metal objects (e.g. coins, hairpins, rings). Do not wrap batteries in aluminium foil. Tape battery terminals or put batteries in a plastic bag before you discard them.
- Do not leave empty disposable batteries inside the remote control.
- The essential oils are not included with the product. Please purchase and use the essential oils if needed.
- Make sure the product is disconnected with power before dropping essential oils into the aroma box.
- Do not use substances other than essential oils.
- Read and follow the safety and use instruction of the essential oil carefully before using it.
- Check the ingredient information of the essential oil against your known allergies and exclude it from use when necessary.
- Consult and follow your doctor's recommendation before using essential oils for infants, pregnant women, women in the lactation period, or if you have respiratory issues.
- If you feel unwell, experience irritation or discomfort during the use of essential oils, please discontinue use.

---

## Electromagnetic fields (EMF)

This appliance complies with the applicable standards and regulations regarding exposure to electromagnetic fields.

---

## Recycling

This symbol means that this product shall not be disposed of with normal household waste (2012/19/EU).



This symbol means that this product contains disposable batteries which shall not be disposed of with normal household waste (2006/66/EC).



Follow your country's rules for the separate collection of electrical and electronic products and batteries. Correct disposal helps prevent negative consequences for the environment and human health.



### Removing disposable batteries

Only the remote control contains disposable battery.

To remove disposable batteries, see the instructions for placing and/or removing batteries in the user manual.

Always remove empty disposable batteries from the product. Take any necessary safety precautions when you dispose of batteries.

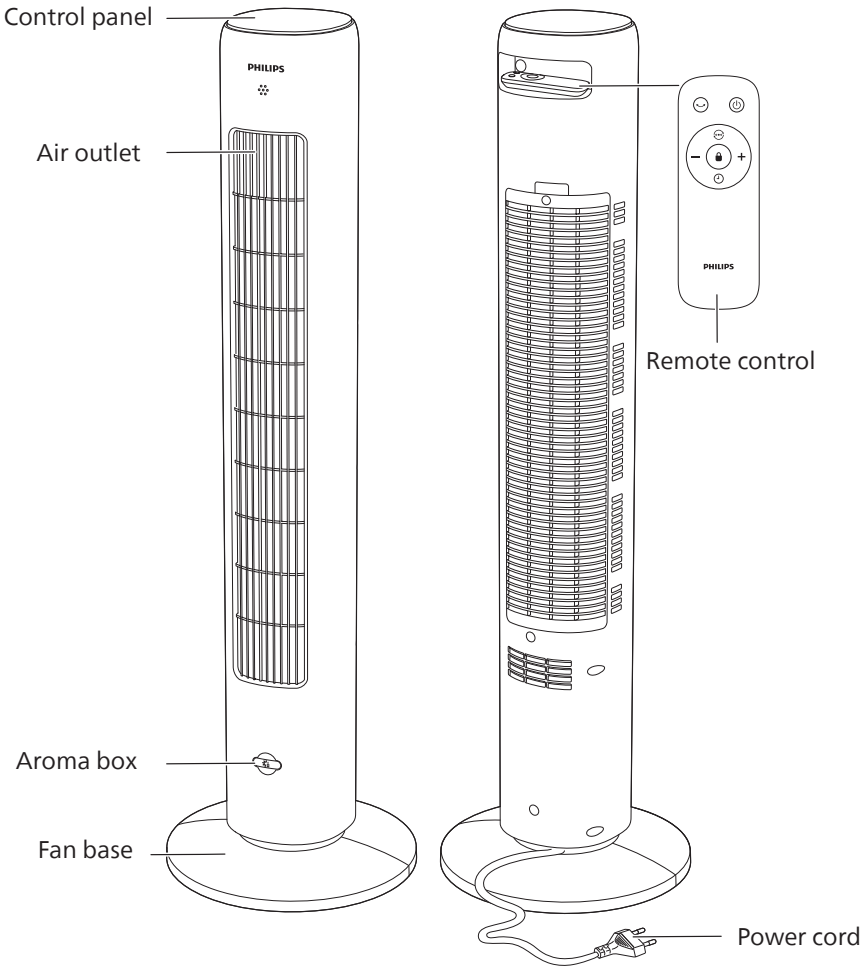
## 2 Your Tower Fan

Congratulations on your purchase, and welcome to Philips!

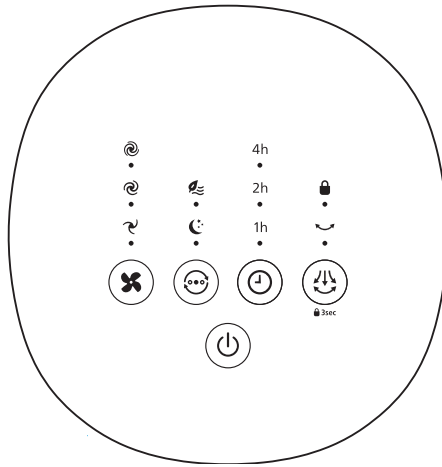
To fully benefit from the support that Philips offers, register your product at [www.philips.com/welcome](http://www.philips.com/welcome).

---

### Product overview



# Controls overview



## Control buttons

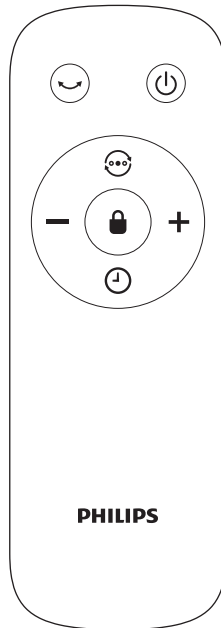
	Fan speed button		Mode switch button
	Timer button		Rotation button
	Power on/off button		






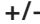
## Display panel

	Fan speed 1		Fan speed 2
	Fan speed 3		Quiet Sleep mode
	Natural Wind mode	<b>1h</b>	Timer of 1 hour
<b>2h</b>	Timer of 2 hours	<b>4h</b>	Timer of 4 hours
	Rotation indicator		Child lock



## Remote control overview



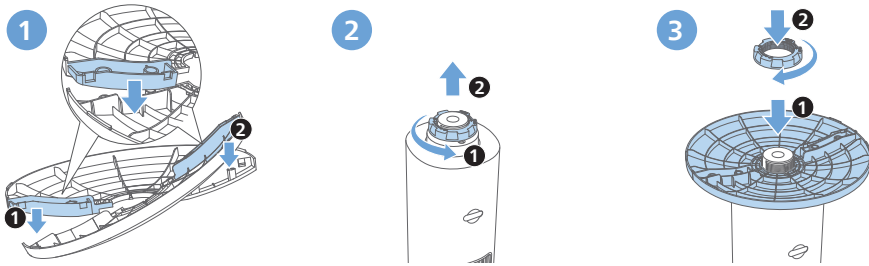
	Rotation button		Power on/off button
	Mode switch button		Timer button
	Child lock button		Fan speed selection button

# 3 Getting started

## Installing the fan base

Remove all packaging materials before first use.

**Note:** Make sure the fan is unplugged from the electrical outlet before installing the base.



- 1 Hold two base halves in a crossed position, and securely interlock the pegs into holes.
- 2 Invert the Tower Fan gently. Remove the plastic nut located at the bottom of the Tower Fan by unscrewing it.
- 3 Fit the base to the Tower Fan. Tightly screw the plastic nut back on.
- 4 Place the Tower fan right side up.

## Using the remote control for the first time

**Caution:**

- Risk of product damage! When the remote control is not used for long periods, remove the battery.
- Battery contains chemical substances, so they should be disposed of properly.

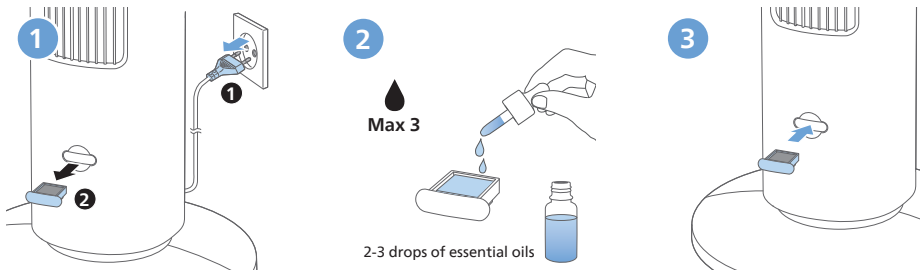


- 1 Open the battery compartment
- 2 Insert 2 Alkaline, type LR03-AAA-1.5V batteries with correct polarity (+/-) as indicated.
- 3 Close the battery compartment.

## Using the aroma function

### Notes:

- The essential oils are not included with the product. Please purchase and use the essential oils if needed.
- Read the user manual of essential oils carefully before using the aroma function.
- Make sure the product is disconnected with power before dropping essential oils into the aroma box.
- Do not use substances other than essential oils.
- Read and follow the safety and use instruction of the essential oil carefully before using it.
- Check the ingredient information of the essential oil against your known allergies and exclude it from use when necessary.
- Consult and follow your doctor's recommendation before using essential oils for infants, pregnant women, women in the lactation period, or if you have respiratory issues.
- If you feel unwell, experience irritation or discomfort during the use of essential oils, please discontinue use.
- Do not use the aroma function of essential oils for infants, pregnant women, or women in the lactation period.





- 1 Pull out the aroma box from the appliance.
- 2 Drop in 2-3 drops of essential oils to the supplied aroma pad.
- 3 Put the aroma box back into the appliance.

# 4 Using the Tower Fan

---

## Turning on and off

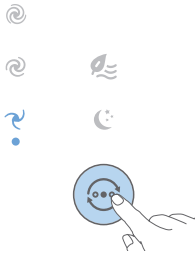
- 1 Put the plug in the power socket.
- 2 Touch the  button on the appliance or the remote control to switch on the Tower Fan. The appliance beeps.
- 3 Touch the  button again to switch off the Tower Fan.





**Caution:**

- When the Tower Fan continuously runs for 15 hours, it will be shut down automatically for protection.




---

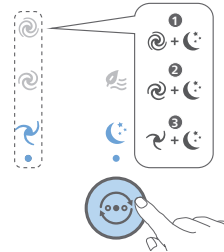
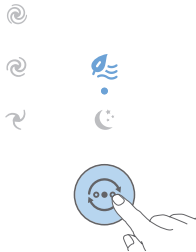
## Normal mode: Changing the fan speed manually






You can choose the fan speed 1 , fan speed 2 , or fan speed 3  by touching the  button on the appliance or press the +/- button on the remote control manually.





## Switching the mode

- Touch the  button switch between Natural wind mode () , Quiet Sleep mode () and manual fan speed.




**Natural Wind mode ():** Adjusts fan speeds up and down to mimic the natural movement of air and bring the refreshing feeling of an outdoor breeze into the room.

**Quiet Sleep ( +  ) mode:** Experience a cool and peaceful night's sleep with the Quiet Sleep mode. This mode gradually decreases the fan speed to the lowest setting over 30 minutes, helping you fall asleep naturally while also conserving energy.

Under this mode, you can also select the fan speed 1 , fan speed 2 , or fan speed 3 3  by touching the  button according to your preference.

## Using the timer function function

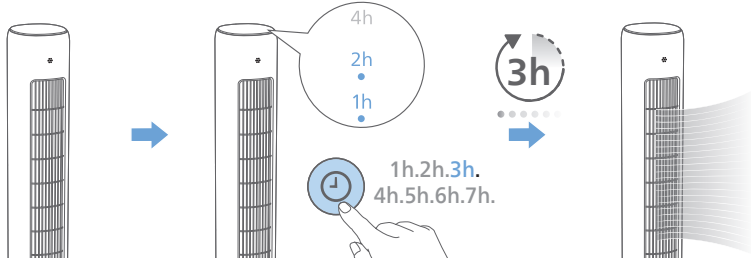
When the Tower Fan is On/Off, touch the  button repeatedly to set a timer from 1 to 7 hours. When the timer ends, the Tower fan will stop or start operating automatically.

1 hour	2 hours	3 hours	4 hours	5 hours	6 hours	7 hours
<b>1h 2h 4h</b>	<b>1h 2h 4h</b>	<b>1h 2h 4h</b>	<b>1h 2h 4h</b>	<b>1h 2h 4h</b>	<b>1h 2h 4h</b>	<b>1h 2h 4h</b>
● ○ ○	○ ● ○	● ● ○	○ ○ ●	● ○ ●	○ ● ●	● ● ●

After the set timer has ended:

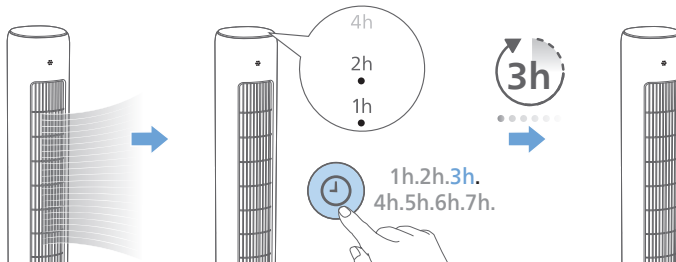
### When the Tower Fan is off

- The Tower Fan will be turned on automatically.





### When the Tower Fan is on

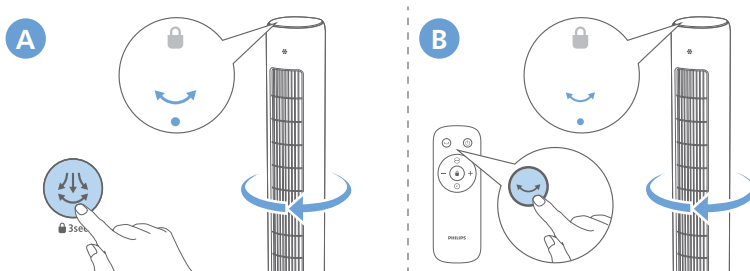
- The Tower Fan will be off automatically.



## Rotation



Touch the  button on the appliance, or press the  button on the remote control to activate the rotation feature in your Tower fan.

- ↳ The  indicator lights up.



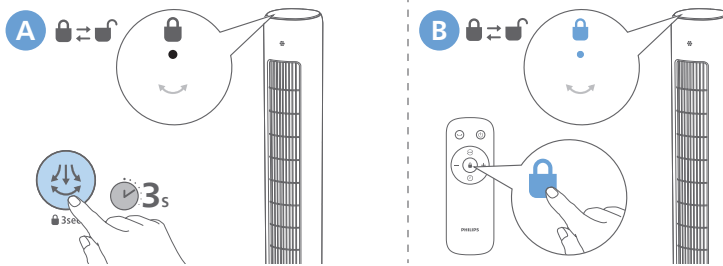
---

## Setting the child lock

Touch and hold the  for 3 seconds on the appliance, or press the  button on the remote control to activate the child lock.



↳ The  indicator lights up.

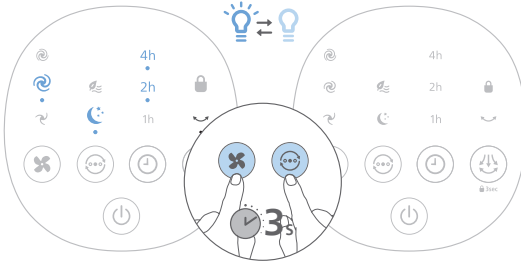
↳ All the other buttons are unresponsive except power on/off.



---

## Using the light on/off function

You can touch and hold the  and  button for 3 seconds to turn on, or turn off the light of the display panel.



## 5 Cleaning and maintenance

### Note:

- Always unplug the appliance before you clean it.
- Never immerse the appliance in water or any other liquid.
- Never use abrasive, aggressive, or flammable cleaning agents such as bleach or alcohol to clean any part of the appliance.

Regularly clean the outside of the Tower Fan to prevent dust from collecting.

- Use a soft, dry cloth to clean both the exterior of the appliance and the air outlet.

## 6 Storage

- 1 Turn off the appliance and unplug from the power socket.
- 2 Clean the appliance.
- 3 Store the appliance in a cool, dry location.
- 4 Always thoroughly wash hands after cleaning.

## 7 Troubleshooting

This chapter summarizes the most common problems you could encounter with the appliance. If you are unable to solve the problem with the information below, contact the Consumer Care Center in your country.

<b>Problem</b>	<b>Possible solution</b>
My Tower Fan fails to turn on or off.	<ul style="list-style-type: none"><li>• If the appliance can't be turned on, please ensure the power adapter is plugged in properly or try another power socket.</li><li>• If the appliance can't be turned off or change modes, check if the childlock is activated on the appliance. When childlock is activated, the appliance doesn't respond to control panel nor remote control until you deactivate the childlock. You can touch Rotation Button for 3 sec on the control panel or Lock Button on the remote control.</li><li>• If the appliance still doesn't work, contact the Consumer Care Center in your country.</li></ul>
The remote control is not working.	<ul style="list-style-type: none"><li>• Check if the childlock is activated on the appliance, the appliance does not respond to remote control when childlock is activated.</li><li>• Check if batteries are properly installed in the remote control or replace with new batteries.</li><li>• Make sure the remote control aims to the signal receiver of the appliance and clear out the objects that may block signals.</li></ul>
My Towe Fan is not producing sufficient amount of air or very weak.	<ul style="list-style-type: none"><li>• Ensure the appliance is set to the highest fan speed for maximum air circulation. Allow the appliance to fully circulate the air throughout the room, this may take few minutes.</li><li>• Ensure all the air inlet and outlet grilles are unobstructed.</li></ul>



<b>Problem</b>	<b>Possible solution</b>
The Tower Fan produces a strange/burnt smell.	<ul style="list-style-type: none"> <li>• The first few times you use the appliance, it may produce a plastic smell. This is normal on new appliance. However, if the appliance produces a burnt smell, turn off the appliance and unplug immediately, then contact the Consumer Care Center in your country.</li> </ul>
My Tower Fan is too loud.	<ul style="list-style-type: none"> <li>• The higher the fan speed setting of the appliance, the louder the noise will be. Set to lower fan speed, the noise will be reduced.</li> <li>• If there is abnormal sound, contact the Consumer Care Center in your country.</li> <li>• If anything drops into air outlet, it may also cause abnormal loud sound. Immediately turn off appliance, and get the foreign objects out of the appliance.</li> </ul>
My appliance is loud at Quiet Sleep mode.	<ul style="list-style-type: none"> <li>• To optimize cooling performance in Quiet Sleep mode, your Tower Fan runs at a higher fan speed for the first 30 minutes, gradually decreasing to a lower fan speed. The noise reduces accordingly. You could also choose the lowest fan speed for consistent airflow and lower sound level.</li> </ul>
The Tower Fan base is wobbly or vibrating.	<ul style="list-style-type: none"> <li>• Check if the appliance is placed on the flat floor or surface.</li> <li>• Check if any foreign objects beneath the appliance.</li> <li>• Check if the base of the appliance is properly assembled, check the chapter "Installing the fan base".</li> </ul>

## 8 Guarantee and service

If you need information or if you have a problem, please visit the Philips website at [www.philips.com](http://www.philips.com) or contact the Philips Consumer Care Center in your country. If there is no Consumer Care Centre in your country, go to your local Philips dealer.

Information to identify the CX5535 to which the information relates to			
Description	Symbol	Value	Unit
Maximum fan flow rate	F	37.3	m <sup>3</sup> /min
Fan power output	P	38.7	W
Service value	SV	1.0	(m <sup>3</sup> /min)/W
Standby power consumption	P <sub>SB</sub>	0.2	W
Fan sound power level	L <sub>WA</sub>	60	dB(A)
Maximum air velocity	C	4.1	meters/sec
Measurement standard for service value	IEC60879:2019		
Contact details for obtaining more information	DAP B.V. Tussendiepen 4 a, 9206AD Drachten, The Netherlands		

