



XP-PEN Deco mini7W Wireless Graphics Drawing Tablet User Manual

[Home](#) » [XP-PEN](#) » XP-PEN Deco mini7W Wireless Graphics Drawing Tablet User Manual 



Deco mini7W Wireless Graphics Drawing Tablet User Manual

Contents

- [1 Safety Precautions](#)
- [2 Limitation of Liability](#)
- [3 Product Overview](#)
 - [3.1 Overview](#)
- [4 Driver Installation](#)
- [5 Driver Settings UI](#)
 - [5.1 Windows](#)
 - [5.2 Driver UI](#)
- [6 Driver Uninstall](#)
- [7 FAQ](#)
- [8 Documents / Resources](#)
- [9 Related Posts](#)

Safety Precautions

This manual uses the following symbols to ensure that the XP-PEN Tablet is used correctly and safety. Be sure to read and observe the Safety Precautions.



Do not use this product in a control system area that requires a high degree of safety and reliability.

In such a system, this product could negatively affect other electronic devices and could malfunction due to the effect of those devices.



Turn the power off in areas where use of electronic devices is prohibited.

Turn the power off your tablet when onboard an aircraft or in any other location where use of electronic devices is prohibited, otherwise it may negatively affect other electronic devices in the area. Unplug the USB connector from this product and turn the power off.



Keep the product away from infants and young children.

Accessories to this gadget may present a choking hazard to small children. Keep all accessories away from infants and young children.



CAUTION

Do not place this product on unstable surfaces.

Avoid placing this product on unstable, tilted surfaces or any locations exposed to excessive vibrations. This may cause the tablet to fall or impact surfaces which can result in damage and/or malfunction to the tablet.

Do not place heavy objects on top of this product.

Do not place heavy objects on the product. Do not step on, or place your body weight on this product as this may cause damage.



Avoid extreme high or low-temperature exposure to the XP-PEN tablet.

Do not store this product in areas that drop below 5°C or above 40°C. Avoid locations with excessive temperature fluctuations. This may result in damage to the product and its components.



Do not disassemble

Do not disassemble or modify this product. Doing so may expose you to heat, fire, electric shock and injury. Disassembling the product will void your warranty



Do not use alcohol for cleaning

Never use alcohol, thinner, benzene or other mineral solvents that may discolor and cause deterioration to the product.



Do not expose to water

Be cautious of water and all liquids that may be near the tablet. Exposure to water or liquid could damage the product.



CAUTION



Avoid placing metallic objects and especially magnetic objects on the tablet.

Placing metallic and/or magnetic objects on this product during operation may cause malfunction or permanent damage.



Do not strike the pen against hard objects.

Striking the pen against hard objects can cause damage to the pen.



Avoid gripping the pen too tightly, and DO NOT use excessive weight/pressure on the Express Key button and pen.

The stylus pen is a high-precision instrument. Avoid pressing too tightly on the Express Key button, and keep any objects from covering the pen to avoid potential damage. Keep the pen away from areas of high dust, contaminants, or any particulate matter that can effect or damage the pen.

Limitation of Liability

1. XP-PEN shall in no event be liable for damages resulting from fires or earthquakes, including those caused by third parties and those arising from user misuse, abuse or neglect.
2. XP- PEN shaft in no event be liable for incidental damages- including but not limited to loss of business income, interruption of business activities, corruption or loss of data — that arise from use or failure to use this product

correctly.

3. XP- PEN shaft in no event be liable for damage resulting from uses not documented in this manual.
4. XP- PEN shaft in no event be liable for damages or malfunction arising from the connection to other devices or use of third party software.

Thank you for purchasing the XP-Pen graphics tablet. Our product user manual currently supports English, Russian, Japanese, German, Korean, Chinese, Italian, Spanish, French, and Polish. We apologize if your preferred language is not supported.

Product Overview

Overview

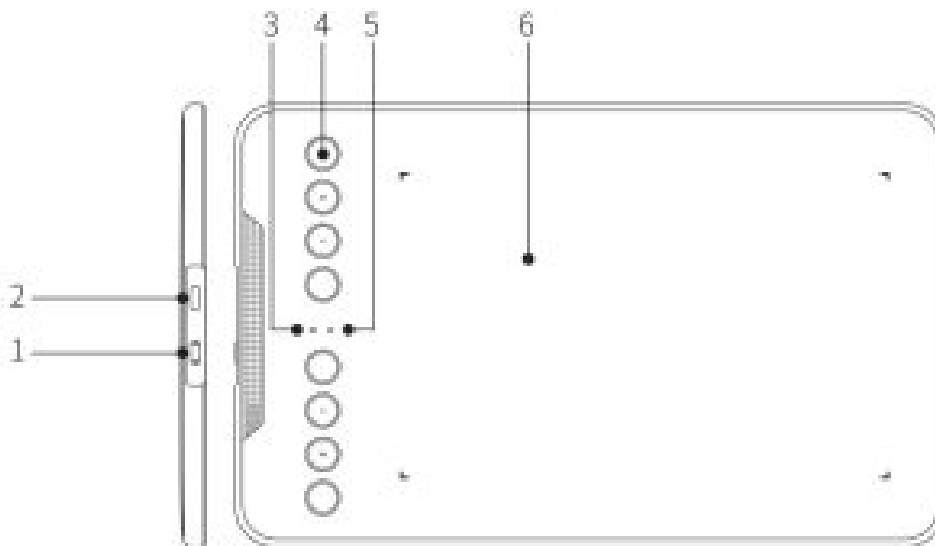


Image 1-1

1. Power key (Only Wireless mode)
2. USB port
3. Status shown by the white indicator:
 - a. Flashing: The digital stylus is in the sensing area, but it does not touch the tablet
 - b. Always On: The digital stylus is in contact with the sensing area
 - c. Off: The digital stylus is outside the sensing area
4. Express key
5. Wireless+Power indicator (Only Wireless mode) Status shown by the blue indicator:
 - a. Flashing: The tablet is waiting for pairing and wireless connection
 - b. Always On: The tablet is successfully paired and connected

Status shown by the red indicator:

 - a. Flashing: The battery power is low (10%)
 - b. Always on: The battery is being charged
 - c. Off: The battery is fully charged
6. Active area The graphics tablet connection 1. Wired connection of the graphics tablet

The graphics tablet connection

1. Wired connection of the graphics tablet Connect the graphics tablet to your computer, and make sure you can use the digital stylus to control the cursor.
2. Wireless connection of the graphics tablet (Only available on wireless graphics tablet)
 - 2.1. Plug the wireless receiver onto the computer.
 - 2.2. Press and hold the power key on the graphics tablet for 3 seconds to turn it on; it will be automatically connected to your computer, after which you can control the cursor with the digital stylus.
 - 2.3. Press and hold the power key on the graphics tablet for 3 seconds to turn it off.

Driver Installation

Supported operating system

Windows 10,8, or 7

Mac OS X 10,10, or above

Download and install the driver onto the graphics tablet to ensure that the product is integral and runs properly.

1. Log onto the official website of XP-Pen (<https://www.xp-pen.com/>) to download the latest version **of the**
2. After downloading the driver, please temporarily disable the anti-virus software and unzip the driver file; then open the folder. For Windows users, please run the “.exe” file; for Mac users, please run the “.d mg” file;and then drag the “PenTablet” folder to the “Applications” folder with the mouse (as shown below), so that the installation is completed.

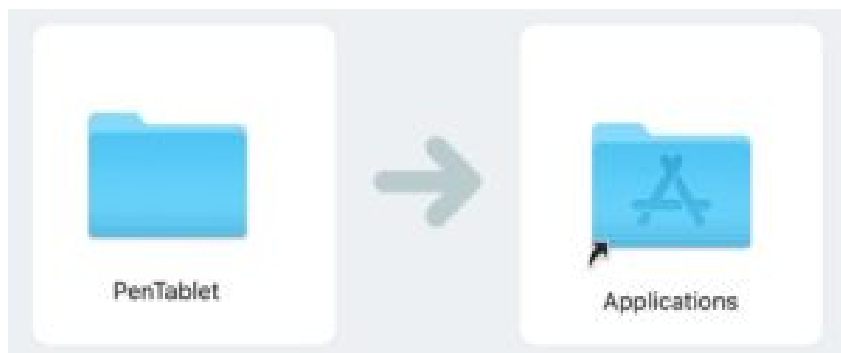


Image 2-1 Drag install Driver

If your system Mojave { 10.14) , please click this button to setup your graphics tablet and reboot.

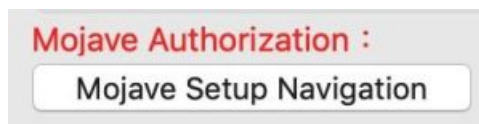


Image 2-2: Mojave Setup Navigation

3. After the driver is installed, connect the graphics tablet to the computer, and check if you can control the cursor properly with the digital stylus.
4. Open the driver interface on the graphics tablet; set and test whether the stylus pressure is

NOTES:

Uninstall any existing graphics tablet software before attempting to install driver. Other graphics tablet drivers may

conflict with the Deco mini4&mini7&mini7W's driver or prevent installation entirely.

Driver Settings UI

Windows

The Deco mini4&miniT&mini7W 's driver settings can be opened in two ways: Double-click the driver's icon (



) in system tray or your desktop.

Driver UI



Image 3-1: UI

1.1 Pen Function Settings

You may customize the functions of your graphics tablet pen's barrel button here. Use the "Function Key" option to program custom keystrokes.

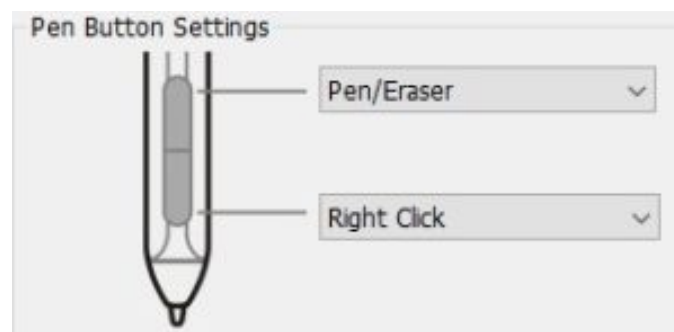


Image 3-2: Pen Functions Setting

1.2 Click Sensitivity & Current Pen Pressure

You can adjust the "Output" of the pen pressure to "Press" "Soft" or "Hard" in this section.

Current Pen Pressure shows the current pressure level being exerted on your graphics tablet and can be used to test pen pressure.

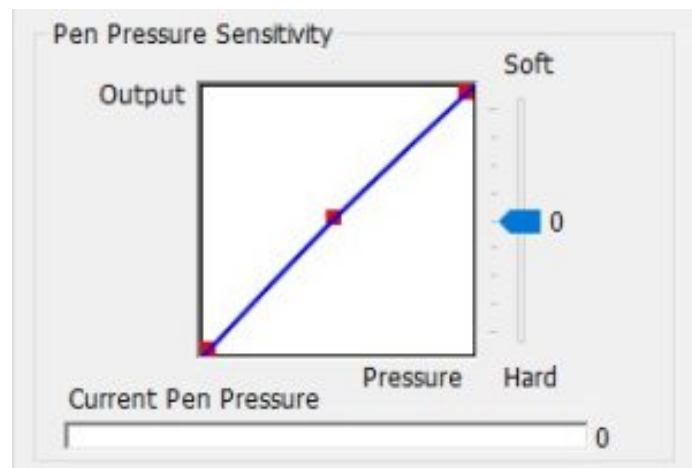


Image 3-3: Click Sensitivity & Current Pen Pressure

1.3 Mouse Mode Absolute (Pen) Mode:

Standard graphics tablet mode; Each point of the graphics tablet's work area corresponds to an absolute point on your computer display.

Relative (Mouse) Mode:

Mouse mode; The graphics tablet's work area does not correspond to absolute points on your computer display and your pen works as a standard mouse.

Note:

Only when you are in Relative Mode can you adjust the cursor's speed.

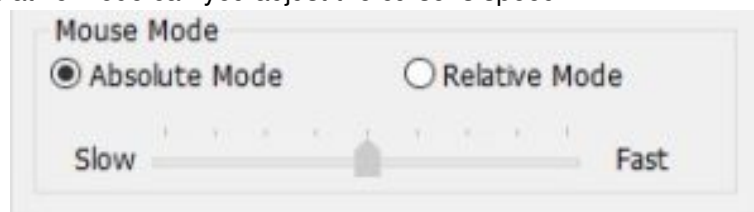


Image 3-4: Mouse Mode

1.4 Current Screen

The graphics tablet may be configured for use with single or dual monitors.

If only one monitor is selected, your graphics tablet input will be limited to that particular monitor.

Custom Display Mapping:

The dimensions of your graphics tablet's on-screen work area can be changed here. Please click the top-left and bottom-right to customize.

90, 180 & 270 angles:

The graphics tablet are set up for 0, 90, 180 and 270 angles and when you set it, you must also rotate your graphics tablet.

Left hand is 180 angles.

You may adjust your graphics tablet's on-screen working area in this tab. Set Work area:

When you click the "Set Work area" button, you can use the stylus pen to customize the graphics tablet work area. Please click the top-left and bottom-right to customize.

Display Ratio:

You can set your graphics tablet work area adjusts the graphics tablet's on-screen working area to match your monitor's resolution.

Max Active Area:

You can set your graphics tablet work area to the max.



Image 3-5: Current Screen

1.5 Import & Export Profiles

When you finish setting up your barrel buttons and shortcut keys, click the OK button to save and exit the graphics tablet settings menu.

Note:

When you finish setting up your barrel buttons and express keys, click the OK button to save and exit the graphics tablet settings menu.

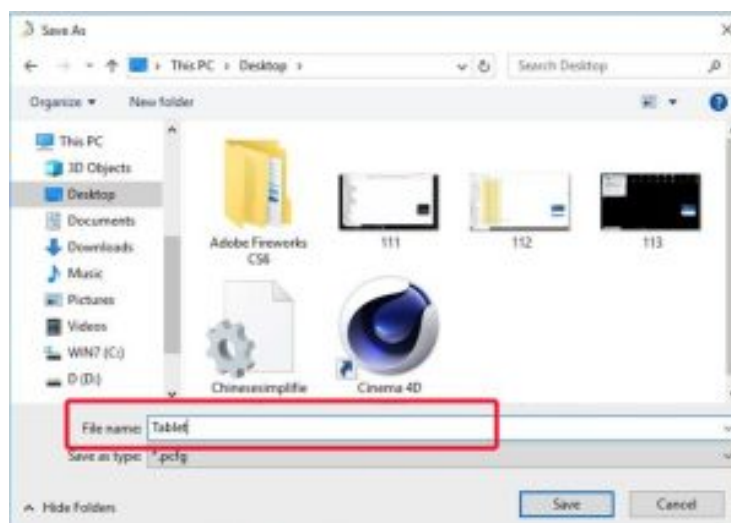


Image 3-6: Export Profile

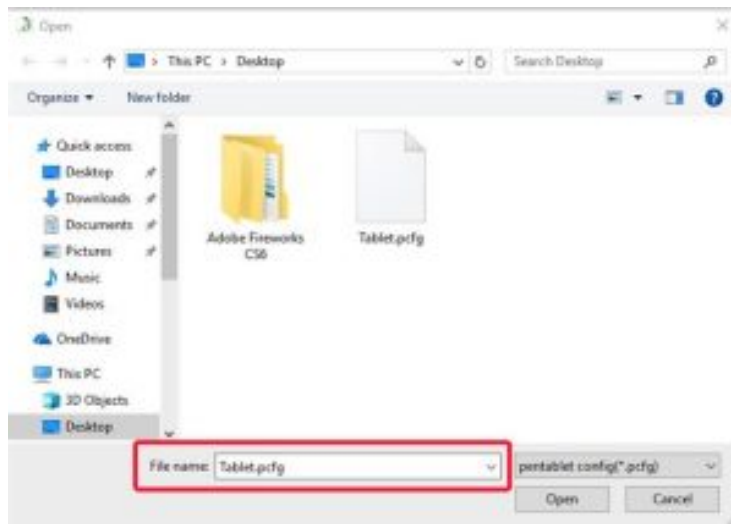


Image 3-7: Import Profile

1.6 Windows Ink

This capability can be toggled on and off here. Enabling this will allow support for Windows Ink and applications that run using Windows Ink.



Image 3-8: Windows Ink

1.7 Express Keys Setting Notes:

- a. The graphics tablet's shortcut keys are designed to work with US English Keys may not function correctly with the other keyboard languages.
- b. By default, the graphics tablets express keys are mapped to standard Photoshop keyboard Keys can be customized to function efficiently in other software.



Image 3-9. Keyboard

When you enable it, all of the express keys function will be disabled.

Hide hints: When you enable it and press any express key, the message will not pop up on the bottom of your screen.

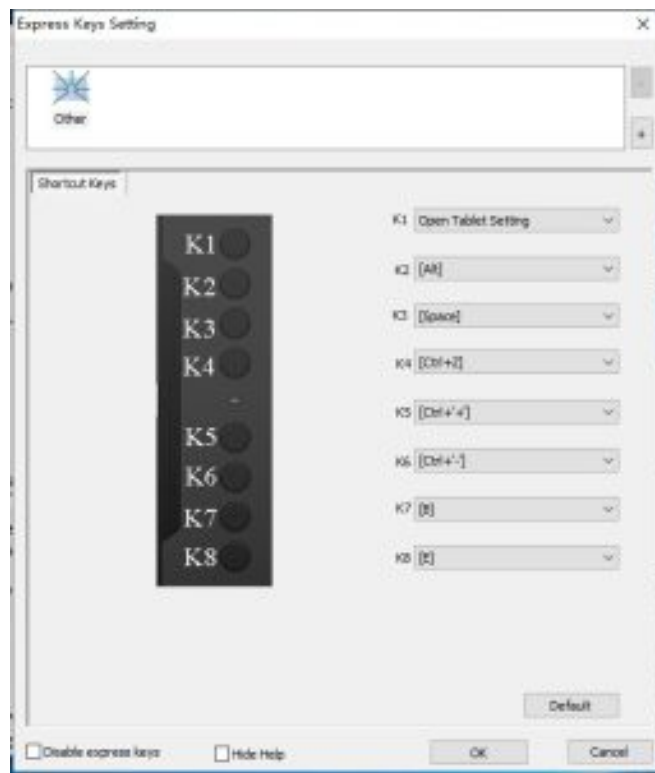


Image 3-10: Keys

In this tab, you may edit the functions of the graphics tablet's shortcut keys. Use the "Definition" option to program custom keystrokes.

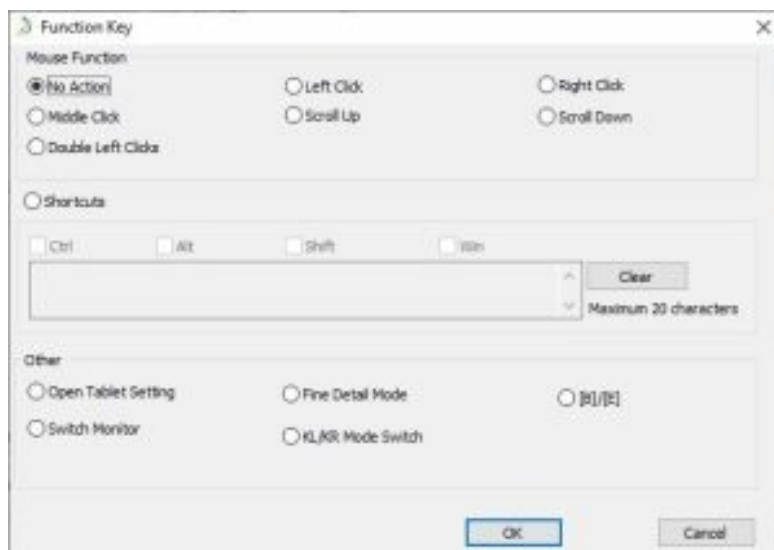


Image 3-11: Function Key

Note:

You can set each shortcut key for different software.

- a. Click the "+" button to go to Select Program tab

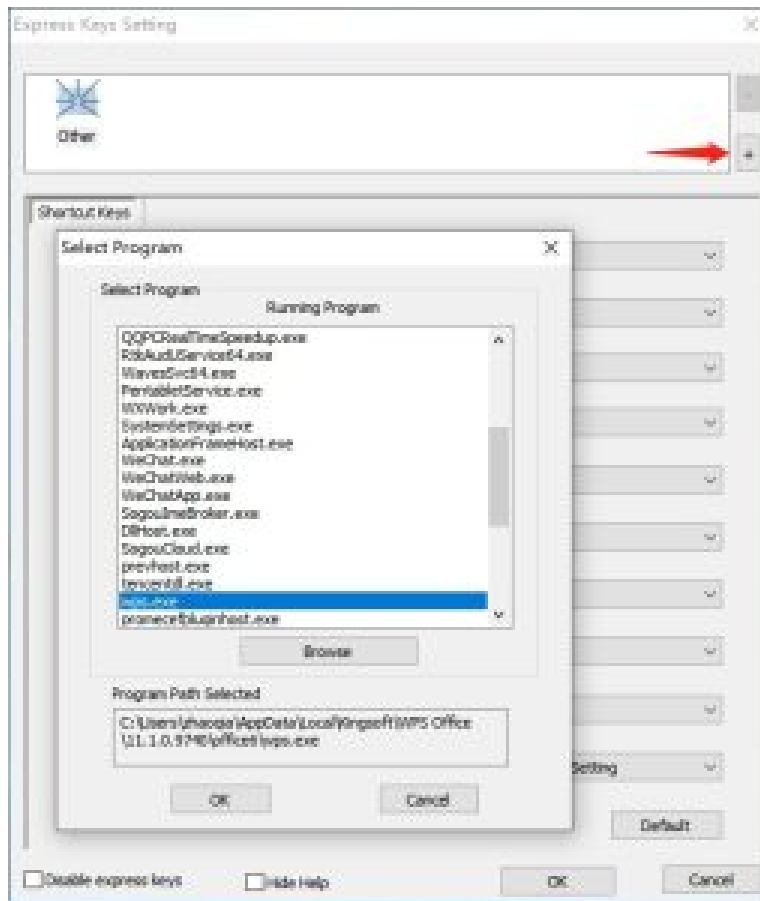


Image 3-12: Select Program

b. You can choose default or use browse to select your choice of

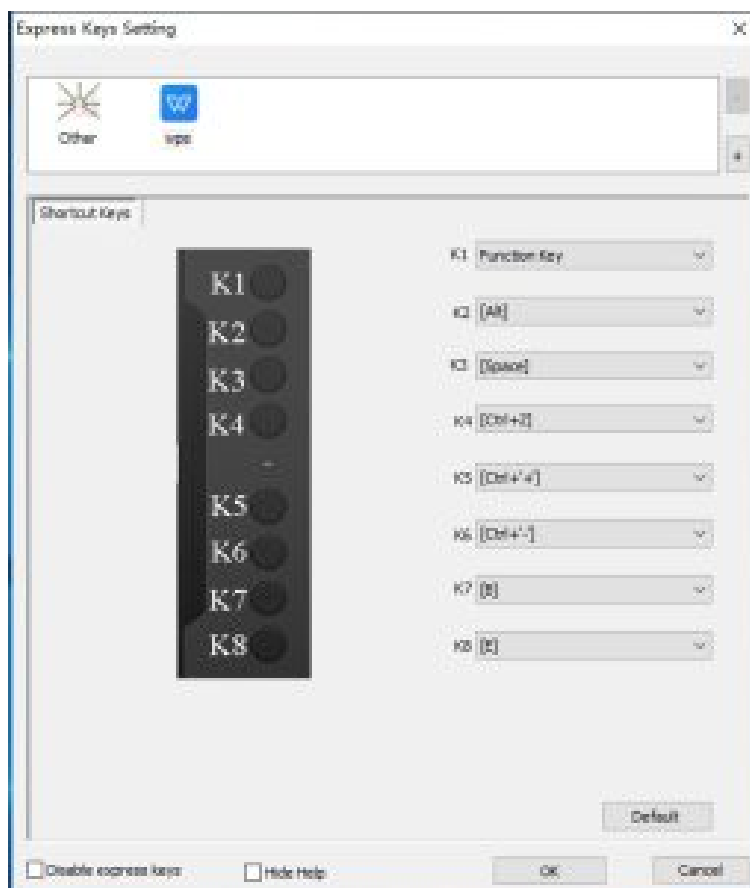


Image 3-13: Select Program

c. Return to the shortcut key settings tab, click the graphics tablet icon, and then customize the shortcut. When you are finished, click “OK” and exit the graphics tablet settings menu.

1.8 Default

You can click the Default button to restore default settings.

1.9 XP-Pen Logo

Click our logo to visit our website.

Mac

To open the graphics tablet’s driver settings, open Finder > Applications > PenTabletSetting.

Driver UI



Image 3-14: Tablet Setting

Pen

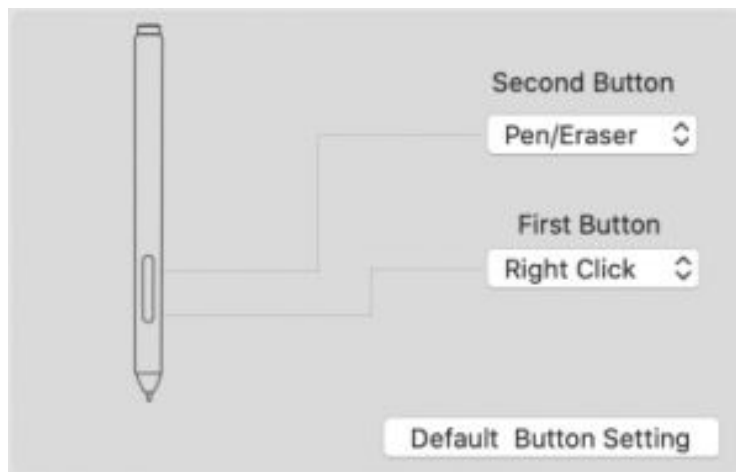


Image 3-15: Pen

1.1 In this tab, you may customize the functions of your stylus’s barrel buttons and click “Default Button Setting” to revert to manufacturer settings

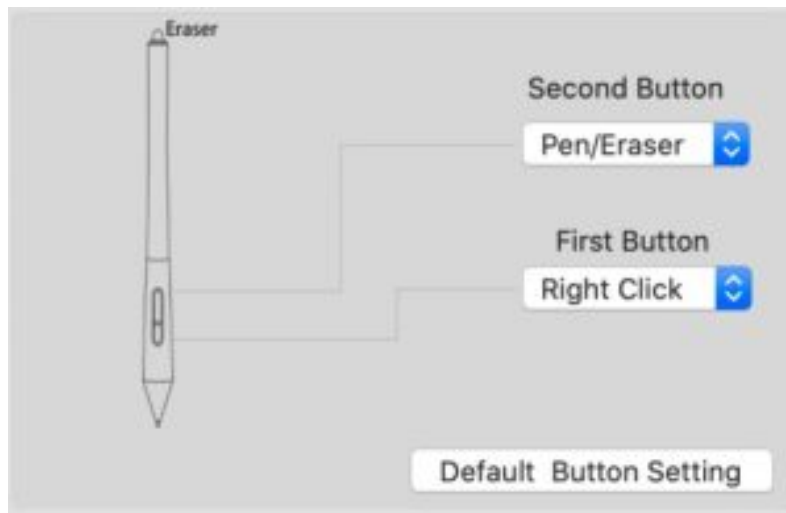


Image 3-16: Pen

1.2. Configuration Setting:

Disable pen pressure:

When the "Disable pen pressure" function is enabled, you can disable the pen pressure function.

Disable Key Function:

When you enable it, all of the express keys function will be disabled.

Disable Display Message:

When you enable it and press any express key, the message will not popup on the bottom of your screen.



Image 3-1T: Configuration Setting

1.3 Work Area Orientation::

0, 90, 180 & 270:

The graphics tablet can also be configured for 0, 90, 180 & 270 angles. Be sure to rotate the actual physical graphics tablet as well.

Left hand is 180 angles.



Image 3-18: Work Area Orientation

1.4 Output:

Image 3-18: Work Area Orientation

You can adjust pen pressure to "Output". "Press" or "Soft". "Hard" sensitivity on here.

It shows the current pressure level being exerted on your graphics tablet and can be used to test pen pressure

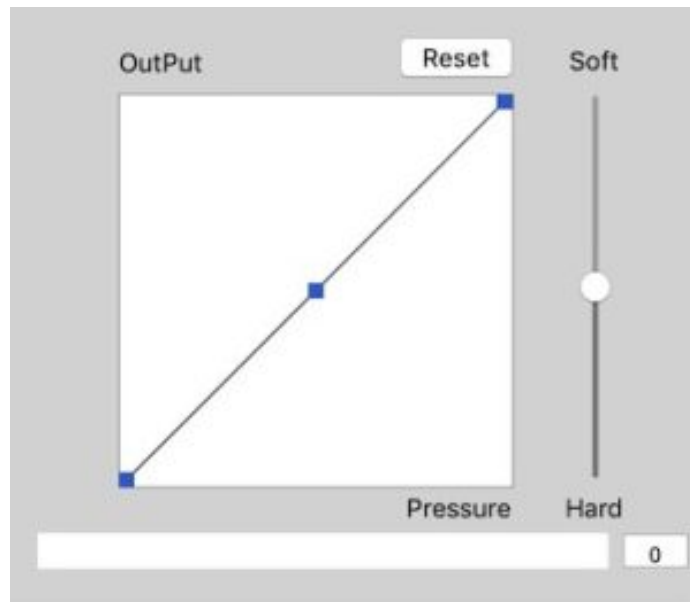


Image 3-19: Output

1.5. Coordinate Mode:

Absolute (Pen) Mode:

Standard graphics tablet mode; Each point of the graphics tablet's work area corresponds to an absolute point on your computer display.

Relative (Mouse) Mode:

Mouse mode; The graphics tablet's work area does not correspond to absolute points on your computer display and works as a standard mouse.

Note: Only when in Relative Mode can you adjust the cursor's speed.



Image 3-20: Coordinate Mode

1.6 Import & Export Profiles

You can use the Import & Export Profile function to save/load your barrel buttons and shortcut keys setting.

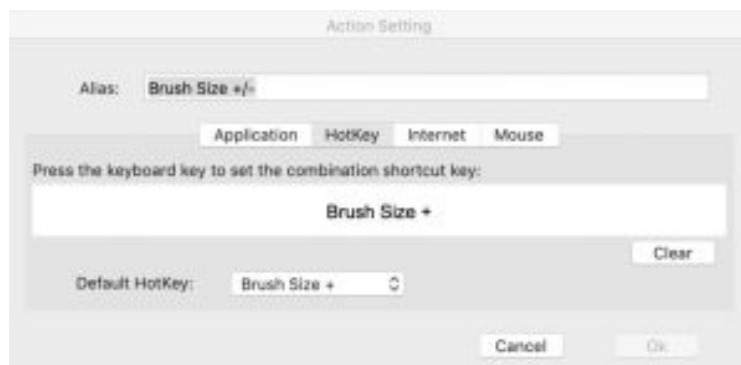


Image 3-21: Export configuration file

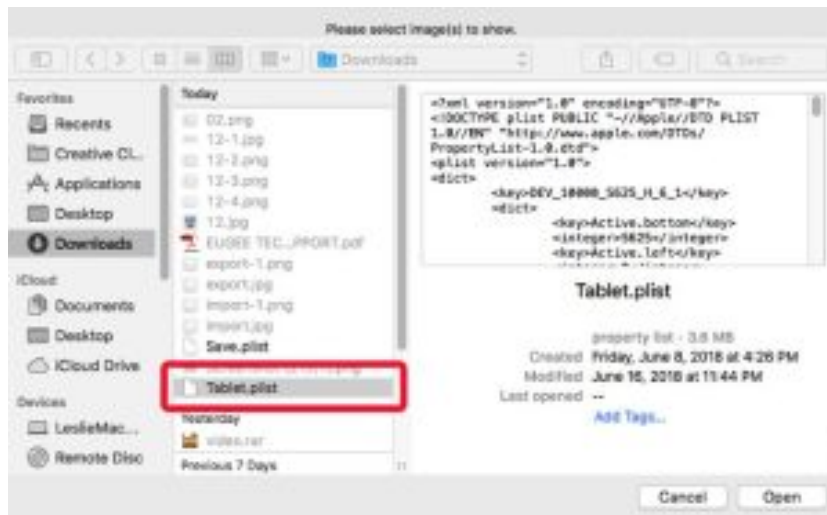


Image 3-22: Import configuration file

2. Monitor

The "Monitor" tab allows you to configure graphics tablet for use with single or dual monitors. The graphics tablet can also be configured to use only a portion of your display.

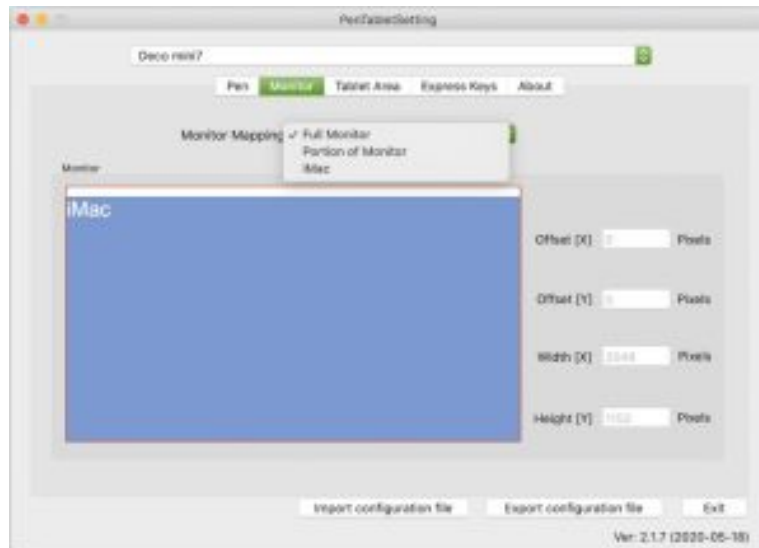


Image 3-23: Monitor

3. Graphics tablet Area

You may adjust your 's on-screen working area in this tab.

3.1. Full Area automatically selects the largest possible working area.

3.2. Screen Ratio adjusts the graphics tablet's on-screen working area to match your monitor's resolution

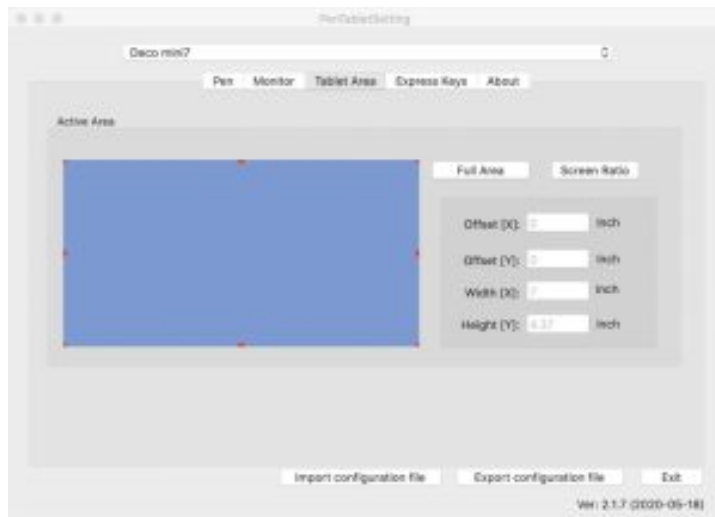


Image 3-24: Full Area

4. Express Keys

Notes:

- a. The graphics tablet's shortcut keys are designed to work with US English keyboards. Keys may not function correctly with the other keyboard languages.
 - b. By default, the graphics tablet's express keys are mapped to standard Photoshop keyboard shortcuts. Keys can be customized to function efficiently in other software.
- 4.1. In the Express Keys tab, each express key has default.



Image 3-25: Express keys

You may choose your preferred functions for the graphics tablet's shortcut keys. Use the "Reset Customer Defined" option to program custom keystrokes..

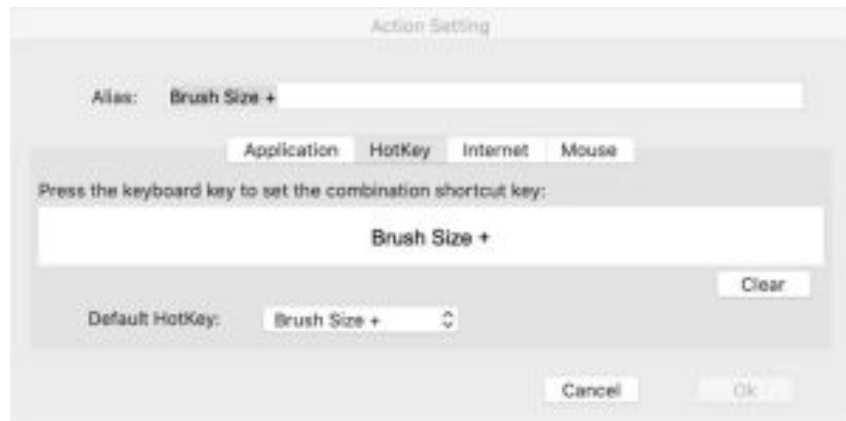


Image 3-26: Action Setting

You can set each shortcut key for different software.

a. Click the "+" button to go to select program tab

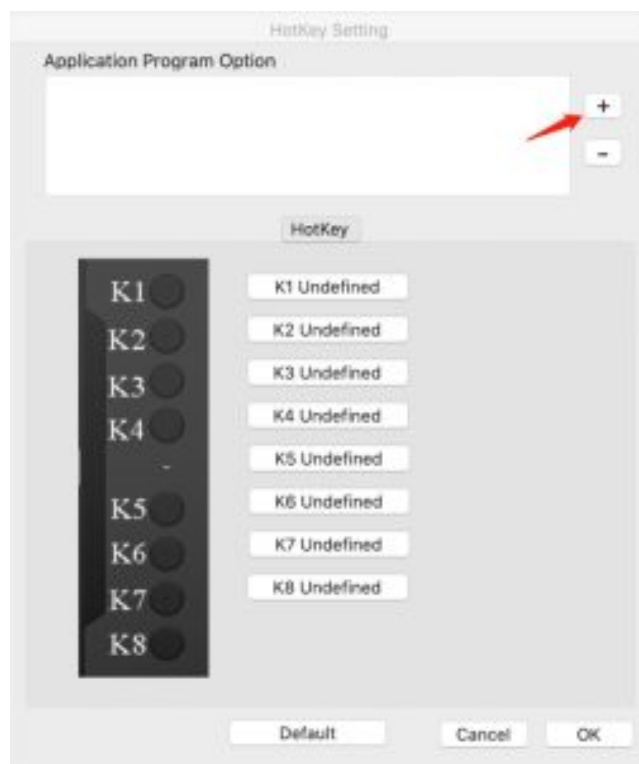


Image 3-27: Select Program

b. Your choice of software.

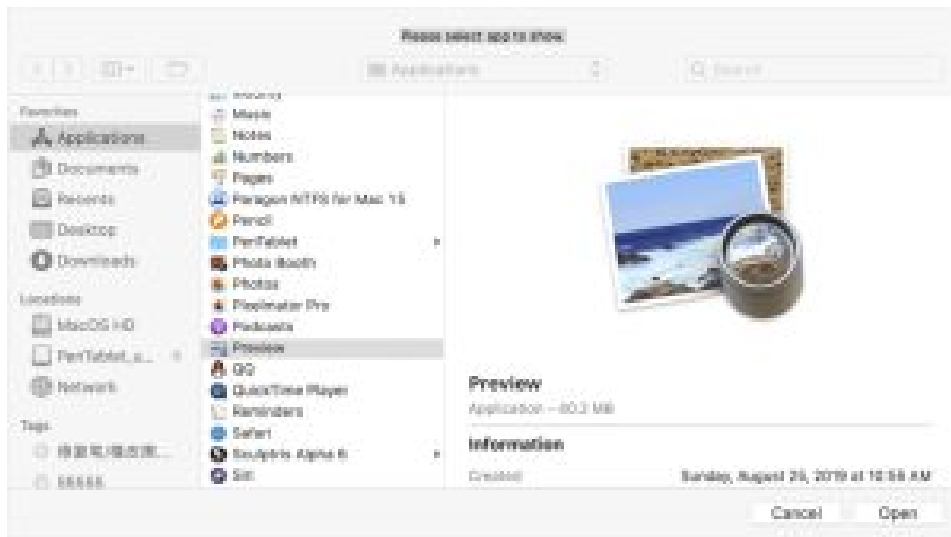


Image 3-28: Select Program

c. Return to the shortcut key settings tab, click the tablet icon then customize the shortcut keys. When you are finished, click the OK button and exit the graphics tablet settings menu

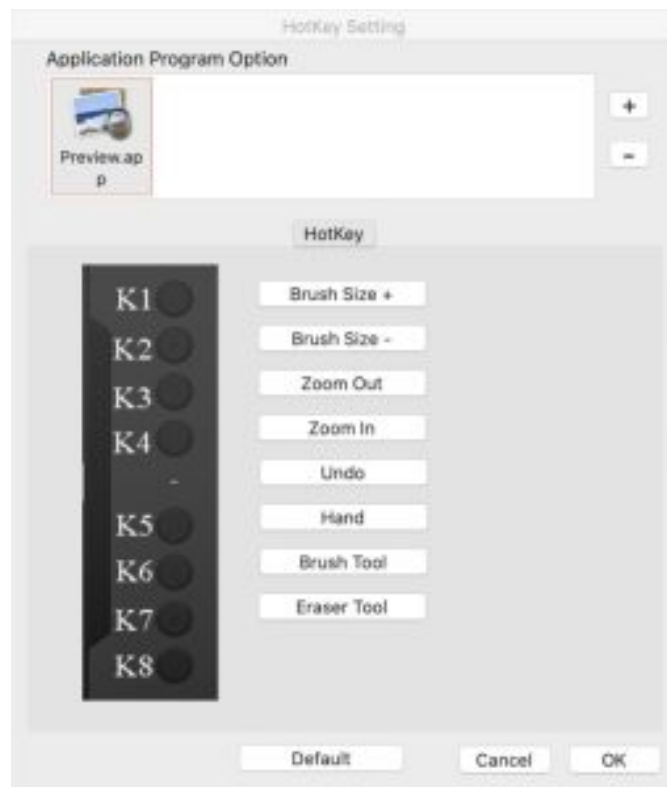


Image 3-29: Hot Key

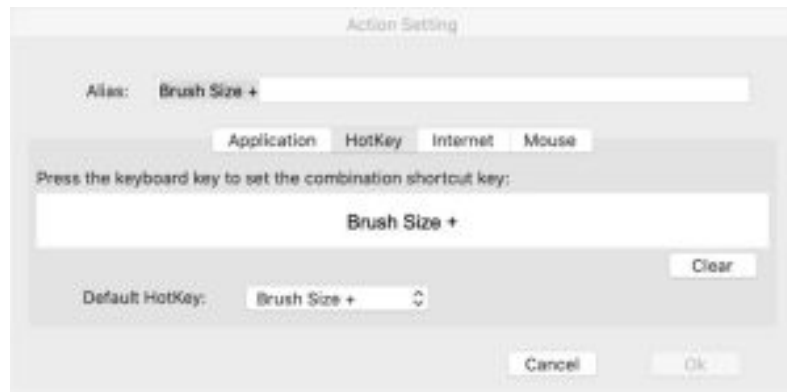


Image 3-30: Action Setting

5. About

This tab displays the current version of your driver software.



Image 3-31: About

Driver Uninstall

Windows

In the Start menu, open [Settings] → [Apps & features]. Find “Pentablet” and click “Uninstall.” Follow the on-screen instructions.

Mac

Open [Finder]→ [Application]→ [Pen Tablet], then click “Uninstall Pen Tablet” and follow the on-screen instructions

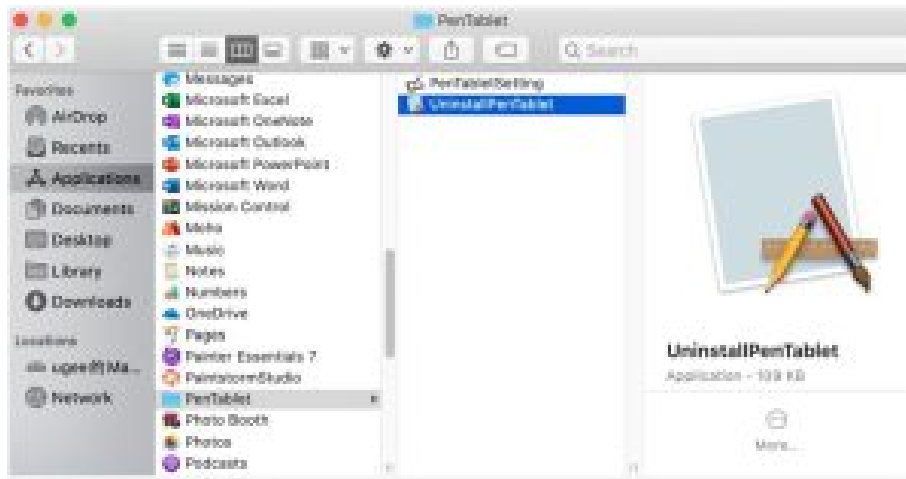


Image 4-1: Mac uninstall

NOTE:


When attempting to reinstall the graphics tablet's driver, be sure to reboot your computer after the uninstall is complete.

FAQ

1. I can't use the stylus to control the cursor.

- Uninstall the graphics tablet driver. If its uninstaller will not run, run the driver's installer again, then allow it to uninstall the driver. Reboot, then connect the graphics tablet to your computer and test your stylus.
- If the cursor responds to your pen input, the graphics tablet's hardware is functional. Reinstall the graphics tablet's driver according to these steps (Windows):
- Download the graphics tablet's latest driver from www.xp-pen.com, then extract the ".zip" contents onto the desktop and installation.

2. How do I know that the graphics tablet driver installed successfully?

After installing the driver, the graphics tablet's driver icon  should be visible in your system tray on the bottom-right of your screen (Windows OS). Pen input will control the cursor and pressure sensitivity will be functional in the driver UI's "Pressure Test" tab.

3. How do I determine if a Problem is software or hardware related?


Connect and install the graphics tablet on a different computer. If the graphics tablet functions properly on the new computer, you are experiencing a software issue confirm that all graphics tablet drivers (including the Deco mini4&miniT&miniTW) are uninstalled and removed from your computer, then reinstall the graphics tablet's driver.

If you have any questions, please contact us at:

Web: www.xp-pen.com

Email: service@xp-pen.com



 User Manual <small>Deco mini4 & Deco mini7 & Deco mini7W</small>	<p>XP-PEN Deco mini7W Wireless Graphics Drawing Tablet [pdf] User Manual Deco mini7W, Wireless Graphics Drawing Tablet, Deco mini7W Wireless Graphics Drawing Tablet, Graphics Drawing Tablet, Drawing Tablet, Tablet, Deco mini4, Deco mini7, Deco mini7w</p>
---	--

Manuals+