

Perfect⁺

WET GRINDER



Perfectly
made



User Guide & Warranty Card



Perfectly
made

Visit **www.elgiultra.com**
to shop for Ultra
products & accessories



MIXER GRINDERS • WET GRINDERS • PRESSURE COOKERS



Dear Customer,

We're delighted to welcome you to the Ultra family of millions of happy customers worldwide.

You've made a smart and informed decision to invest in a perfectly made Ultra. Ultra products are inventive and aesthetically superb with a combination of good quality, precision and durability to help prepare the tastiest and healthiest meal.

Ultra assures you of trouble-free performance for years. However, in the unlikely event of any operational problem, we would be more than happy to assist you.



ULTRA CUSTOMER CARE

1800 102 2040 (Toll Free)



ultracare@elgiultra.com

Visit: www.elgiultra.com
to find the nearest Ultra Care Centre

PRODUCT INFORMATION



Perfect⁺

S.No.	Features	
1	Form	Table Top
2	Capacity	2L
3	Motor Wattage	150 watts
4	Voltage	230V, 50Hz
5	Grinding Stones	Conical
6	Drum	AISI-304 Rust-Resistant Food Grade Stainless Steel
7	Shell	ABS
8	Drum Shape	Dish-type
9	Multi-Utility Drum	Yes
10	Automatic Timer	Yes
11	Buzzer	Yes
12	Power Surge Protector	Yes
13	Shock Proof	Yes
14	Stone Assembly weight	2.5 KG
15	Warranty	10 Years (2 Years on timer)
16	Net weight	13.7 kg
17	Product Dimension (mm)	460 x 272 x 288
18	Drum Size (mm)	Ø250 x 180
19	Motor Speed (Rated without load)	1350 RPM
20	Drum Speed (with load)	135 - 140 RPM
21	Box Contents	Grinder unit, user guide and batter cleaner



Recommended Measure and Grinding Time *

Grinding Medium	Load Condition	Measurements before soaking	Soaking Time in Hrs	Water to be added
Rice (Raw / Boiled)	Minimum	170 gms	4	170 ml
	Maximum	1250 gms	4	1250 ml
Dhal	Minimum	65 gms	2	130 ml
	Maximum	312 gms	2	620 ml

1 cup (200 ml) – 180 gms of idly rice

1 cup (200 ml) – 180 gms of black gram

Grinding Instructions

Rice and Dhal should be ground separately.

For better grinding result, do grind rice first and dhal next.

Do not use cut pieces of coconut; instead use only shredded coconut for grinding.

*Results under lab test conditions and may vary with actuals

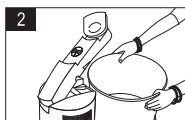


How to operate your Ultra Perfect+ Table Top Grinder

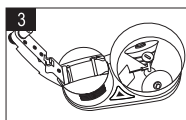
Sequence of Operation



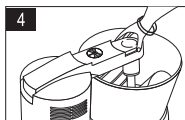
1 Wash and clean the drum and roller stone assembly



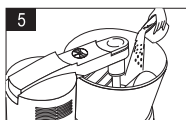
2 Place the drum on coupler and gently rotate till it's seated properly



3 Place the roller holder assembly inside the drum. Ensure compliance with the diagram printed on arm



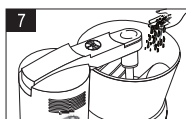
4 Keep the knob in unlock position and close the arm. Rotate the knob gently to lock the arm



5 Take a cup of water and pour it into the drum



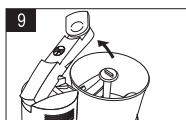
6 Preset the timer to 30 minutes or required time by using up/down keys and then press the ON key



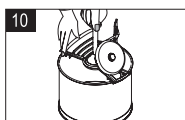
7 Add the grinding medium in small quantities with sufficient water and close the drum with hatch



8 Once the set grinding time is over, a beep alert will be heard and grinder will automatically switch off



9 Remove the hatch, Rotate the knob anti-clockwise to release spring load and to unlock the arm. Lift the arm upwards



10 Remove the roller stone assembly, place it on the batter cleaner as shown and rotate the stones to wipe down the batter into the drum



11 Remove the drum and use batter as per need. Store the rest in refrigerator

Note:

For pulse/cereals, always add in small quantities to ensure even grinding



Make Your Ultra Perfect+ Work Longer

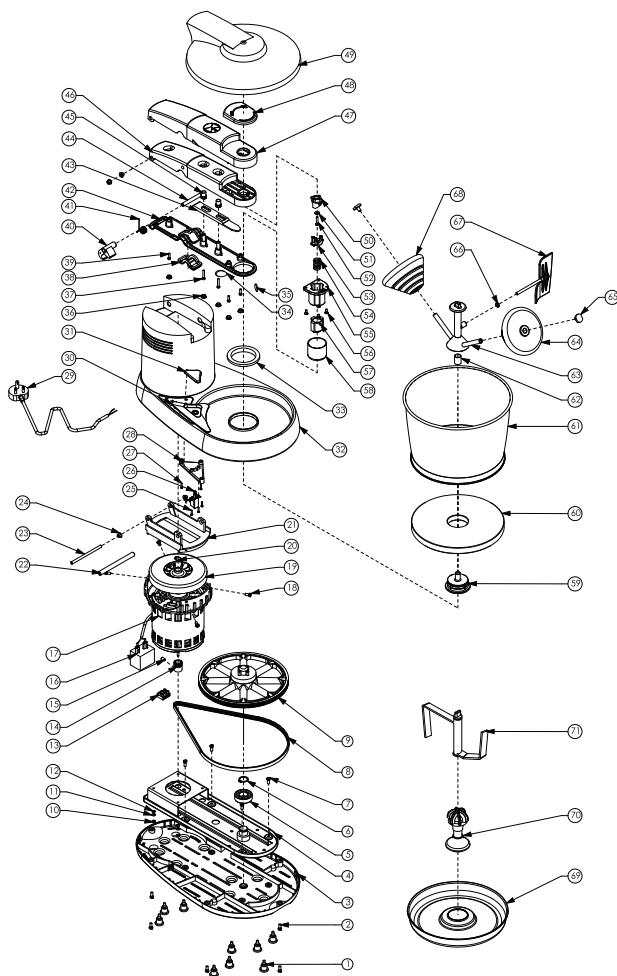
DOs

- Make sure you keep your Ultra Wet grinder clean and dry, always
- When not in use, disconnect the electric cord from the mains
- For best results and trouble-free performance, use Ultra Wet grinder only as specified in this User Guide
- Be alert and cautious while operating in the presence of children and physically challenged persons
- Always keep your Ultra Wet grinder away from heat sources
- Lift the appliance at its base
- Clean the drum and roller assembly thoroughly after every use
- Ensure that the grinder is in unlocked position while not in use
- Keep the wiper position facing the motor while grinding
(Please refer diagram printed on Arm)

DON'Ts

- Do not run the grinder empty for more than a minute
- Do not use any other attachments. Use only those recommended by us
- Do not put your hand into the drum while grinding
- Do not unlock the arm while in operation
- Do not insert sharp objects into the slits. This would damage the parts inside
- Do not lubricate any parts with oil/grease
- Do not keep the drum upside down after washing
- Do not attempt to repair the grinder yourself. If there's any fault, contact Customer Care

Exploded View of Ultra Perfect⁺



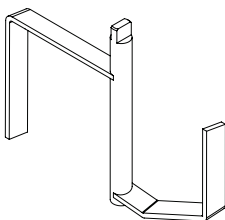


SL. No.	Part Name
1	Bottom shoe
2	Cheese Head Screw - M5x12 (SS)
3	Base Frame - Grey
4	Chassis - Sheet Metal
5	Deep Groove Ball Bearing 6004
6	Circlip A20
7	Cheese Head Screw - M5x12 (SS)
8	Polyv Belt, 4PJ 858
9	Driven Pulley
10	Hexagon Nut M4 (SS)
11	Spring Washer-M4
12	Plain Washer-M4
13	Connector 3 Way
14	Drive Pulley (1440 Motor)
15	Hex. Socket Grub Screw 'C'-M5x10(SS)
16	Capacitor 230V
17	Motor Assembly
18	Hexagon Bolt - M5X10 (SS)
19	Motor Fan
20	A12 Circlip
21	Hinge Plate
22	Lock Pin
23	Hinge Pin (Ø6 New)
24	Hinge Bush
25	Philipp Head Self Tapping Screw 6X9.5-SS
26	Switch 230V & 110V (Teknic)
27	Philipp Head Self Tapping Screw 4X13-SS
28	Switch Mounting Plate
29	Wire Cord-230V
30	Switch Cover
31	Switch Pad
32	Shell Assembly
33	Collar Pad
34	Cap-Hinge Pin
35	Cap-Lock Pin
36	Blue Button

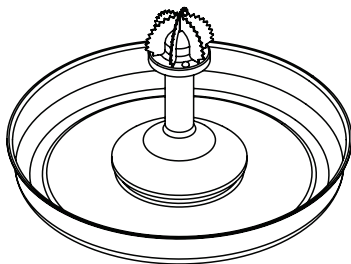
SL. No.	Part Name
37	Cheese Head Screw - M4x25 (SS)
38	Cover - Hook
39	Cheese Head Screw - M4x12 (SS)
40	Hook
41	Lock Spring
42	Channel Bottom Cover
43	Slider
44	Hook Pin
45	Guide - Slider
46	Arm Chennal (New)
47	Channel Top Cover (New)
48	Knob (New)
49	Hatch - Violet
50	Top Cam (New)
51	Spring Washer - M5
52	Cheese Head Screw - M5x20 (SS)
53	Bottom Cam (New)
54	Main Spring
55	Housing
56	Slotted CSK Screw M4X12
57	Sleeve
58	Cover Sleeve
59	Adaptor
60	Flat Stone
61	Drum
62	Bush Roller Holder
63	Roller Holder Assembly
64	Taper Roller Assy-1
65	Roller Lock Screw
66	Hexagonal Nut (SS)-M6
67	Wiper with stud
68	Taper Roller Assy-II
69	Bowl
70	Coconut Scraper
71	Atta Kneeder

Additional Attachments (Optional)*

Atta Kneader



Coconut Scraper



Visit **www.elgiultra.com**
to watch the demo video



TROUBLESHOOTING CHART

PROBLEM	REASON	SOLUTION
Grinder does not run	No power supply	Check mains
	Loose connection of wire cord	Contact Ultra Customer Care
Grinder starts but drum stops suddenly	Overloading of medium	Remove medium and add in small quantities
	Low belt tension	Contact Ultra Customer Care
	Insufficient water	Add water as required
Grinder is noisy	Incorrect wiper position	Check and correct the wiper position as printed on Arm lid
	Excess quantity, insufficient soaking time	Reduce quantity or check manual for correct grinding measures
	Incorrect wiper position	Check and correct the wiper position as printed on Arm lid
	Low voltage	Operate at 230 V Ac 50 Hz
Takes more time to grind	Low belt tension	Contact Ultra Customer Care
	Motor housing air vents blocked	Use a dry brush to clean air vents
	External heat source	Keep the grinder away from external heat sources
	Uneven platform	Place the grinder on stable and horizontal platform
Vibration	Motor burnt	Contact Ultra Customer Care
	Drum / Roller Holder Assembly not cleaned well	Clean the drum / roller holder assembly
Grinder / Drum smells	Faulty switch	Contact Ultra Customer Care
	Roller assembly not cleaned well	Unscrew roller and clean under running water
Grinder stops automatically when it is switched on	Roller not cleaned properly after use	Unscrew roller and clean under running water
	Excessive loading/insufficient water	Remove excess medium / add water
In case of abnormal operating conditions, contact Ultra Care Centre		



Warranty- Terms & Conditions

Elgi Ultra Industries Limited (hereinafter referred to as "the Company") guarantees this product for normal home use against defects in materials or workmanship for a period of 10 years on wet grinder (2 years on digital timer) from the date of original retail purchase. During the said period, the Company has the option to either repair or replace parts free of charge, if this product is returned personally or sent through prepaid courier to our Ultra Care Centres, along with proof of purchase and guarantee card duly filled in by the retailer.

The decision of the Ultra Care Centres in determining the cause of failure and repairs required to be carried out will be final and binding under this 10 years on wet grinder (2 years on digital timer) warranty and cannot be canvassed either by dealer or the retail purchaser on any ground whatsoever. The warrantor shall not be liable for any transportation cost or any damage due to or during transit of the product either way. Repaired units under warranty will be returned to the customer at his/her risk and on "to pay" freight basis.

This Warranty shall NOT apply:

- For wear and tear to the product
- For grinder hatch
- Involvement in an accident
- If the product is purchased from any unauthorised source
- If repairs or product modifications and/or alterations have been carried out by unauthorised service organisations or persons
- If the product is being used for commercial purposes
- If the defect is caused by abuse or misuse of the product or by environmental conditions that are not in conformance to the recommended operations of the product
- If the defect is caused by its connection to peripherals, additional equipment or accessories other than those recommended by Ultra
- If the warranty card and/or a purchase bill is not produced at the time of repair

In no event will the Company be responsible for any loss or damage, directly by or consequential to, careless, negligent handling or misuse of this product.



This Warranty is expressly in lieu of all other warranties expressed or implied (statutory or otherwise) and of all other obligations or liabilities on the Company's part. No person, agent, distributor, dealer, service centre or company is authorised to change, modify or extend the terms of this Warranty in any manner whatsoever.

The Company's liability under this Warranty is restricted to only repair of the product and does not involve any replacement, monetary payment or damages. Any doubt/disputed claim under this Warranty shall be subject to arbitration by an Arbitrator appointed only by the Company. The arbitration shall be at Coimbatore only.

Please Note:

- The Warranty is applicable only for purchase made through authorised dealers in the country of purchase
- The above Warranty is applicable only for materials/components and not for service/labour charges incurred in rectification/repair



CHARGES APPLICABLE

Service Period	Spares	Service charges (Ultra service centre/doorstep)	Doorstep visiting charges
Up to 1 year within warranty	Free	Free	Free
After 1 year within warranty	Free	Free	₹100
Out of warranty	At Cost	₹250	₹100

Above charges are applicable only in India and is subject to change without any prior notice. Please check with Ultra Customer Care for prevailing charges.

Doorstep service is applicable only in India.



FOR YOUR KIND ATTENTION

- Please read all instructions and warning before using this product. Keep this user guide, sales receipt and warranty for future reference and use.
- In case of any mechanical faults, call Ultra Customer Care. Do not attempt to repair it yourself
- This user guide provides important information on proper operation and maintenance. Every effort has been made to provide the details with as much accuracy as possible. We reserve the right to change or upgrade the product or any part thereof without prior notice.
- The instructions appearing in this guide are not meant to cover all possible conditions and situations that may occur. We urge you to exercise common sense, caution and care when setting or using this product.
- When unpacking check to make sure all parts listed is included. If you find anything missing or broken or damaged, kindly call Customer Service.
- The design, specifications and price are subject to change without prior notice.



Perfectly
made



/ultraappliances



/ultraappliances



/ultra_appliances

The Ultra social media broadcasts are full of recipes and tips on healthy, delicious food. From daily updates to interesting engagements on special days, our content is something you mustn't miss. What's more, there are also lots of contests and exciting prizes to look forward to!

WARRANTY CARD*

Please retain this limited warranty card and present the same to the Ultra Service Technician / Customer Care Centre for availing warranty service.

10 YEAR WARRANTY
(2 years on timer)
(Valid In The Country Of Purchase)

Ultra Perfect⁺ Wet Grinder

Name:

Full postal address:

Bill No.:

Date of purchase:

Serial No.:

Month of manufacture:

Dealer's stamp:

(Please ensure dealer stamp and serial number is duly filled in to secure warranty repair service)

ELGI ULTRA INDUSTRIES LIMITED

No. 1435 (PART), India House, Trichy Road, Coimbatore- 641 018, Tamil Nadu, India.

 0422 2304141  0422 2301377

 www.elgiultra.com  [/ultraappliances](https://www.facebook.com/ultraappliances)  [/ultraappliances](https://www.youtube.com/ultraappliances)  [/ultra_appliances](https://www.instagram.com/ultra_appliances)

Customer Care

Toll Free No: 1800 102 2040

 ultracare@elgiultra.com