

■ **CAUTIONS:**

1. This product is not intended for use by persons (including children) with reduced physical, sensory or mental capabilities, or lack of experience and knowledge, unless they have been given supervision or instruction concerning use of the appliance.
2. Children should be supervised to ensure that they do not play with the appliance.
3. The fan should be installed at 2.3m above the ground.
4. When the ventilating fan is connected with the power circuit, all-polarity switch with at least 3mm contact gap must be in the charging line. Green and yellow wire of power supply should be earthed.
5. Precautions must be taken to avoid back-flow of gases into the room from the open flue of gas or other open-fire appliance.
6. The fan is intended for mounting in outside windows.
7. If the supply cord is damaged, get it replaced by the manufacturer, its service agent or similar qualified persons in order to avoid hazard.
8. Ensure that the fan is switched off from the supply mains, before removing the guard.
9. The mounting surface should be clean before installation of the fan.

■ **CAUTIONS:**

1. Before cleaning or maintenance remove the power cord from the power source.
2. Do not use petrol, benzene, thinner or any other chemicals for cleaning the fan.



**GM ELEKTRA PVT. LTD.**

303, Shalimar Morya Park, New Link Rd, Andheri (W), Mumbai- 400053, Maharashtra, India. Customer Care No.:0806 905 6805 | Email: care@gmelektra.com  
 WhatsApp No.: 99203 54444 (Say 'Hi' to connect with us instantly)

www.gmmodular.com

## Instruction/ Installation Manual

**Cleano**  
VENTILATING FAN



Delivering  
**Fresh Air**



25  
MONTHS  
WARRANTY

RUSTPROOF  
BODY & BLADE

NOISELESS  
OPERATION

ENERGY  
EFFICIENT

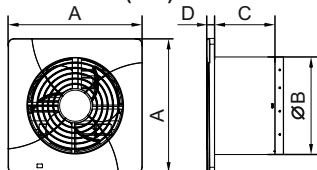
POWERFUL  
BLDC MOTOR

■ **SPECIFICATIONS**

Model	Size (in/mm)	Volt (V)	Freq (Hz)	Input Power (W)	Air Volume (m³/min)	Noise dB(A)
100mm	4/100	220	50	4	0.5	45
150mm	6/150	220	50	5	2.2	46
200mm	8/200	220	50	6	3	50

Table 1

■ **DIMENSION (mm)**

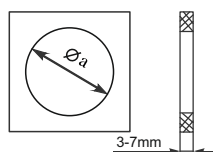


Model	A	B	C	D	Installation Space $\varnothing a$ mm
100mm	150	99	83	17	102
150mm	200	147	93.5	18	153
200mm	250	181	128	11	187

Table 2

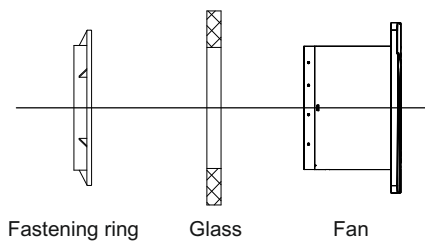
■ **INSTALLATION**

**Step 1:** Make a hole in the glass of dimension " $\varnothing a$ " given in Table 2.



Outdoor

Indoor



- Step 2:** Remove the fastening ring from the fan.  
**Step 3:** Place the fan body into the hole from indoor.  
**Step 4:** Put the fastening ring on the fan body from outdoor.  
**Step 5:** Fasten the fastening ring.

■ **WIRING DIAGRAM**

