



User's manual

Mouse

Designed for LG gram

For safe and convenient use of the product, be sure to read the manual before using the product.
After reading the user's manual, keep it in a place where the user can see it at any time.
The spelling, errors, or inaccuracies in the user's manual are subject to change by LG Electronics without prior notice.

MSA2/SD-6880



MFL71845501



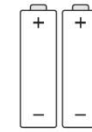
Index

composition of the product	1
How to insert the battery	1
How to use the mouse	2
sleep mode	2
battery status indicator	2
Safety precautions	3

Composition of the product



Wireless mouse

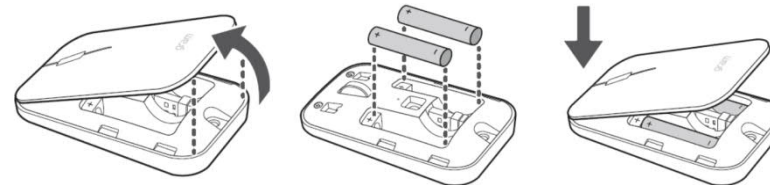


Battery(AAA)



USB dongle

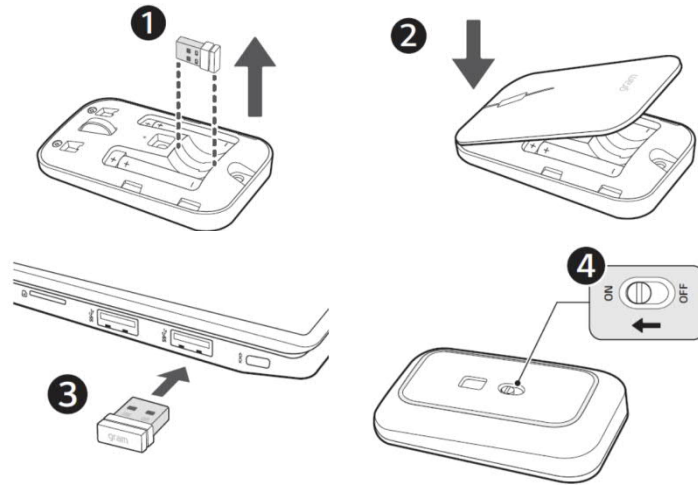
How to insert the battery



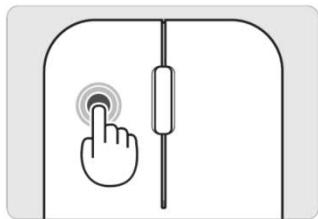
* Batteries are included in the package.

* Insert the battery according to the polarity.

How to use the mouse

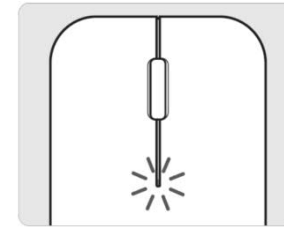


Sleep mode



If the mouse is not used for a certain period of time or the USB dongle is disconnected while in use, the mouse automatically switches to sleep mode. Press the left or right mouse button to wake up.

Battery status indicator



If the battery indicator blinks continuously, please replace it with a new battery.

Safety precautions

Warning

Batteries with swelling or corrosion are visible to the naked eye, it can be dangerous, so please contact the manufacturer or seller.

Keep away from fire. (Do not put in the microwave.)

Be careful not to let metal items such as necklaces, coins, keys, and watches come into contact with the battery terminals.

To protect your eyesight, do not point the LED light emitted from the back of the optical mouse towards your eyes. It may cause blurred vision or loss of vision.



Caution

When connecting with other products, compatibility issues may occur with some products. LG Electronics does not guarantee compatibility with all peripheral devices.

Use between 0°C and 40°C. There is a risk of product damage, errors, or explosion if used and stored at too low or too high temperatures.

Install in a safe place where there is no risk of falling.

Falling may damage the product or cause personal injury.

Be careful not to spill liquids such as water, coffee or juice on the mouse as it may cause defect or malfunction.

Keep the product away from hot products (heaters, etc.). The product may be deformed or there is a risk of fire.

When not using the product for a long time, turn off the product to prevent unnecessary battery consumption.

Do not disassemble or modify the product. Even during the warranty period, it is not the subject for free maintenance. For users who have transplanted a medical device, please use it after consulting a doctor.

Avoid exposure to direct sunlight in places such as inside a closed car. The shape of the product may be deformed due to an increase in temperature, or there is a risk of fire.

Do not use it for any purpose other than the mouse function.

Keep out of reach of children.

The nano receiver (dongle) provided with the mouse is set to work only with the wireless mouse you purchased. Please note that it does not work with other models and the same model of other serial number.

FCC Statement

15.105

This equipment has been tested and found to comply with the limits for a Class B digital device, pursuant to part 15 of the FCC Rules. These limits are designed to provide reasonable protection against harmful interference in a residential installation. This equipment generates, uses and can radiate radio frequency energy and, if not installed and used in accordance with the instructions, may cause harmful interference to radio communications. However, there is no guarantee that interference will not occur in a particular installation. If this equipment does cause harmful interference to radio or television reception, which can be determined by turning the equipment off and on, the user is encouraged to try to correct the interference by one or more of the following measures:

- Reorient or relocate the receiving antenna.
- Increase the separation between the equipment and receiver.
- Connect the equipment into an outlet on a circuit different from that to which the receiver is connected.
- Consult the dealer or an experienced radio/TV technician for help.

KDB447498 D01 v05r02 (P5)

FCC Radiation Exposure Statement

The product comply with the FCC portable RF exposure limit set forth for an uncontrolled environment and are safe for intended operation as described in this manual. The further RF exposure reduction can be achieved if the product can be kept as far as possible from the user body or set the device to lower output power if such function is available.

15.19

This device complies with Part 15 of the FCC Rules. Operation is subject to the following two conditions:

- (1) this device may not cause harmful interference, and
- (2) this device must accept any interference received, including interference that may cause undesired operation.

15.21 / KDB784748 D01 v08 (P4)

Caution!

Any changes or modifications not expressly approved by the party responsible for compliance could void the user's authority to operate the equipment.