

Register your new device on MyBosch now and get free benefits: bosch-home.com/welcome

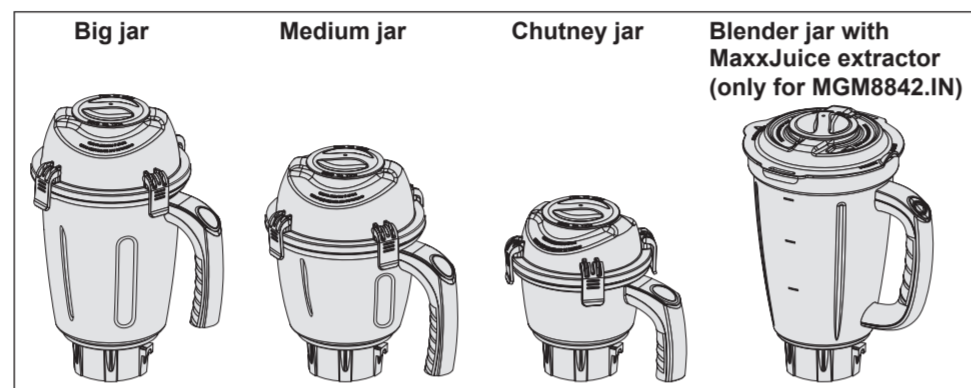
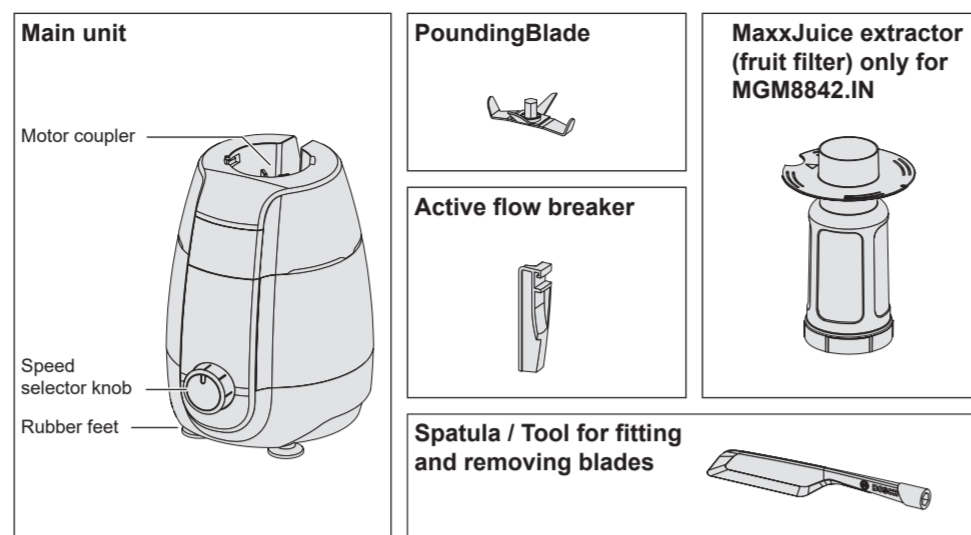
Mixer Grinder

MGM88...IN

[en] Instruction manual Mixer Grinder

800120294 (010125)
 (excluding public holidays)
 * Mon-Sat: 8:00 am to 8:00 pm
www.bosch-home.com/in
 Toll Free 1-800-266-1880 *
 Mumbai 400093
 MIDC, Andheri East
 Plot No.103, Road No.12,
 Arena House, 2nd Floor Main Building,
 Manufacturing Pvt. Ltd.
 BSH Household Appliances

Overview



Note:
Fitting jar: Place the jar on the top socket of the main unit, ensuring that the locks fit properly in the jar locking grooves of the top socket.
Jar Lid: Ensure that the lid gasket is properly fitted. Place the lid on top of the jar, gently press down and lock the lid onto the jar using the lid lock clamps. Hold the lid gently while operating.
Speed control: Turn the speed selector knob clockwise for speed 1, 2 or 3, as desired.
Pulse: Turn the speed selector knob anti-clockwise for a few seconds and release for momentary operation. Pulse is especially useful for applications such as grinding chutneys, crushing ice, etc.

- Handle the blades carefully, wash them under running water and do not rub with your hands.
- It is normal for the mixer grinder to become a little discoloured, especially when used with ingredients like turmeric. To avoid this, make sure that the ingredients do not come into contact with the mixer grinder body.
- Do not drop the main unit or jars.
- Do not use the jars as storage containers.

Contents

Overview.....	2
Safety and important instructions	4
Know your mixer grinder.....	5
Jar capacity	5
Using the product	6
Safety systems	6
Operating your mixer grinder	7
Cleaning	8
Troubleshooting.....	8
Blade changing procedure	9
Blade selection	10
Dry grinding applications with PoundingBlade	11
Disposal.....	13

Congratulations on the purchase of your new Bosch TrueMixx Pro Mixer Grinder. In doing so, you have opted for a modern, high-quality domestic appliance. You can find further information about our products on our web page.

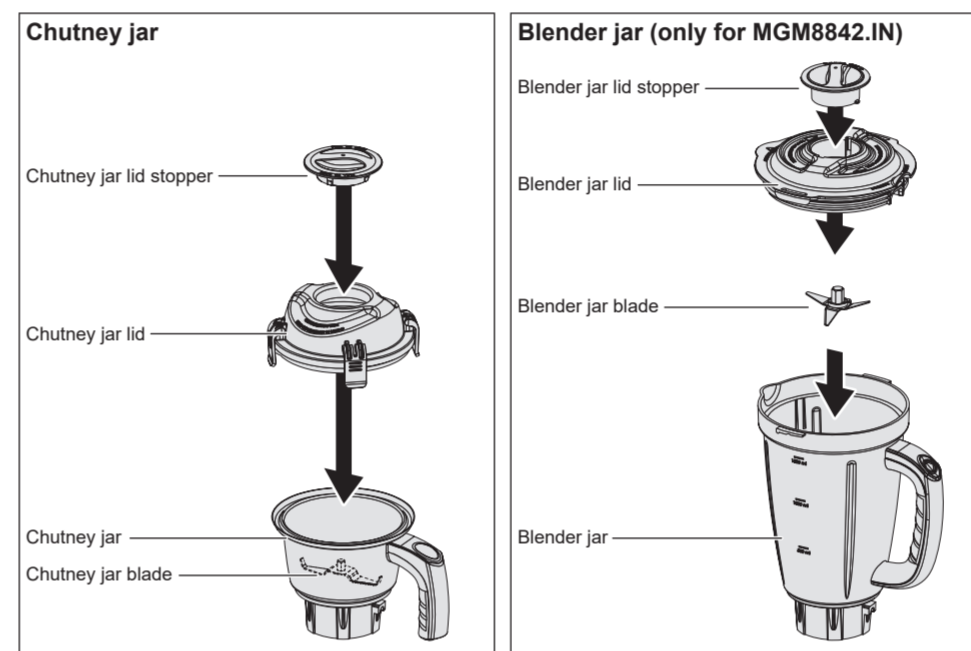
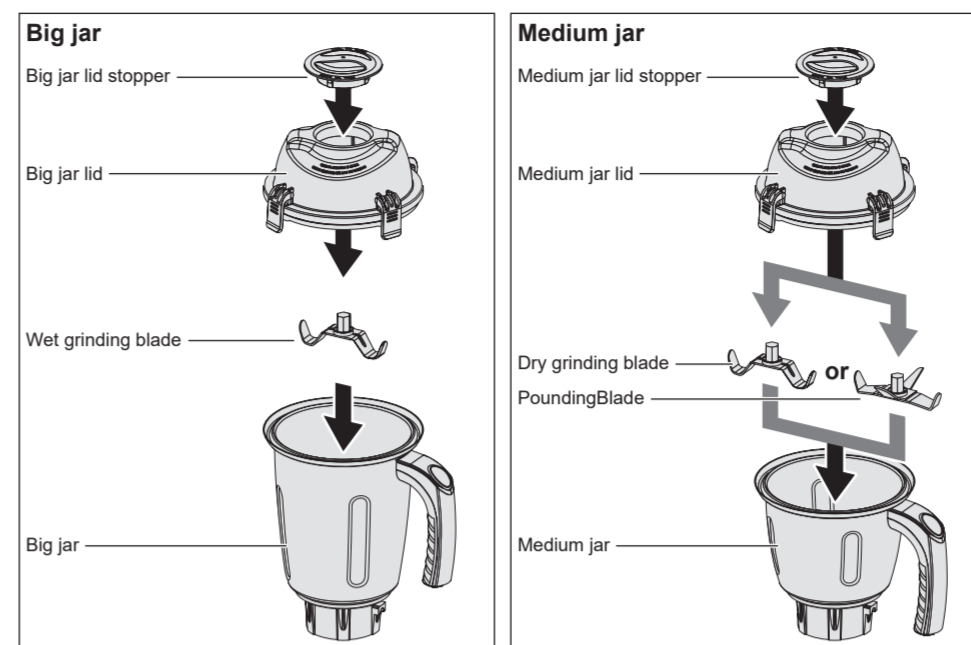
Know your mixer grinder

Voltage and frequency	230 V AC, 50 Hz
Class of motor insulation winding wire	F class
Rating	30 minutes rating
	5 min ON and 2 min OFF (Maximum 6 ON cycles)
Material of body	ABS
Material of jars	Stainless steel
Blade assembly	Stainless steel
Speed control	3 speed with pulse
Main cord	PVC flexible 3-core cord
Country of origin	India

Jar capacity

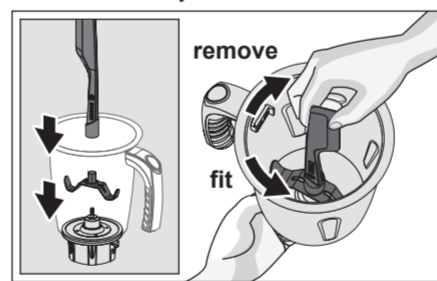
Jar	Size	Rated Capacity		
		Dry	Wet	Liquidise
Big jar	1.5 litre	-	0.75 litre	1.0 litre
Medium jar	1.0 litre	0.5 litre	-	-
Chutney jar	0.4 litre	0.2 litre	0.2 litre	-
Blender jar	1.5 litre	-	-	1.0 litre

Minimum capacity for all the above jars is at least up to blade level.

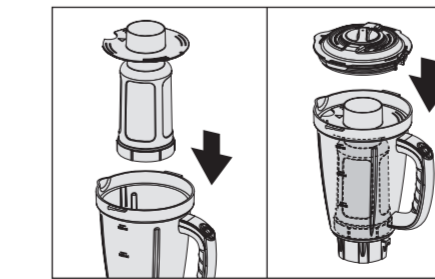
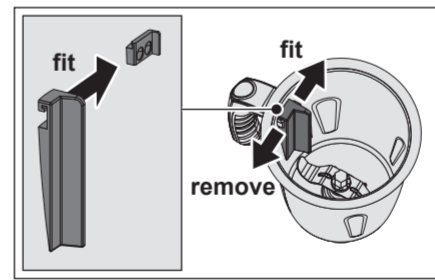
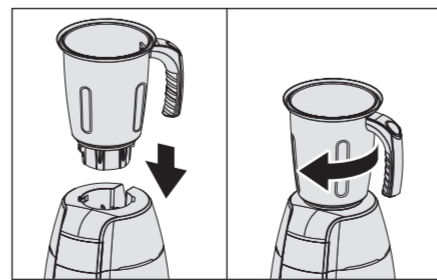


Using the product

- How to fit/remove blades (big jar, medium jar, blender jar)**
 Hold the coupler on the underside of the jar and with the spatula, tighten by rotating in an anti-clockwise direction to fit and clockwise to remove until the blade is securely locked/removed.
- How to fit jar to main unit**
 Carefully insert the jar on top of the main unit. Ensure that the lock of the jar fits into the slot of the main unit. Rotate the jar clockwise until it locks and use the handle to lock.
- How to fit/remove active flow breaker**
 Your Bosch TrueMixx Style Mixer Grinder has an active flow breaker which improves the quality of your wet grinding applications. To fit the active flow breaker, insert the active flow breaker in the groove on the inside surface of the big jar and slide it in until it fits properly. To remove it, gently press in the opposite direction till it disengages. Slide it out thereafter.
- How to use MaxxJuice extractor (only for MGM8842.IN)**
 For mixing smoothies use the blender jar with the blender jar blade. Put the MaxxJuice extractor in the blender jar as shown and press it gently down.



Note: If the coupler and/or some other parts are removed during removing the blade, please refer to → "Blade changing procedure" see page 9.



Safety systems

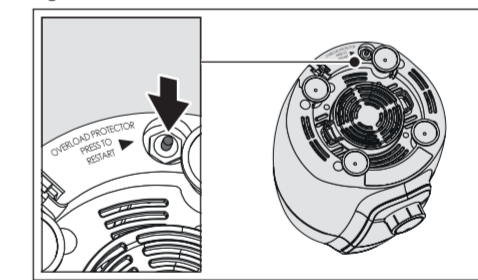
The Bosch TrueMixx Pro Mixer Grinder is fitted with an overload protector (OFF) mechanism to prevent the motor burning out due to overloading. In case of excess loading with ingredients in the jar, very thick paste or low voltage conditions, your Bosch mixer grinder automatically switches off and the red knob on the bottom of the mixer grinder will spring out.

Safety and important instructions

Read and follow the instruction manual carefully and keep for later reference! Enclose these instructions when you give this appliance to someone else. If the instructions for correct use of the appliance are not observed, the manufacturer's liability for any resulting damage will be excluded.

- This mixer grinder is strictly for household use and not applicable for non-domestic and/or commercial use.
- Please only use official Bosch parts and accessories with the Mixer Grinder. Never use these parts and accessories with any other appliances.
- Check if the voltage indicated on the base of the mixer grinder corresponds to the local electrical mains voltage before you connect the appliance.
- This appliance can be used by persons with reduced physical, sensory or mental capabilities or lack of experience and/or knowledge if they have been given supervision or instruction concerning use of the appliance in a safe manner and if they understand the hazards involved.
- Keep children away from the appliance and connecting cable and do not allow them to use the appliance. Do not let children play with the appliance. Cleaning and user maintenance must not be performed by children.
- Do not use the mixer grinder if the power cord and/or appliance are damaged. Only our customer service may repair the appliance, e.g. by replacing a damaged power cord, in order to avoid hazards.
- Do not use the mixer grinder on a wet surface.
- Keep the mixer grinder away from hot gas burners, electric hot plates or similar appliances.
- The power cord must not come into contact with hot parts or be pulled across sharp edges.
- Always ensure that speed selector knob is in the OFF position and the appliance unplugged before you remove or attach jars or accessories.
- Blades should be fitted properly before running the mixer grinder.
- Do not operate the mixer grinder without locking the dome or lid in place or with an empty jar.
- Always unplug the mixer grinder before reaching into the jar with your fingers or any other object (such as a spatula).
- Do not open the lid or dome when the mixer grinder is running.
- Do not add solid ingredients when the mixer grinder is running.
- Do not grind hot ingredients or sugar in the mixer grinder.
- Do not overload the mixer grinder.
- Do not leave the main unit unattended while in operation.
- Always unplug the mixer grinder after use, or whenever the appliance is unsupervised or in the event of an error.
- If the appliance/motor is getting too hot and you can feel hot air coming out of the side vent or bottom, switch off the mixer grinder and restart after 10 minutes.
- Recommended time for grinding dry ingredients is up to 120 seconds. If you need finer powder please wait for 2 minutes and grind again. Warning – Risk of burns: Jars may heat up due to friction so never touch the metal part with bare hands immediately after grinding & always use the handle provided for moving the jar.
- Do not run the mixer grinder for more than 5 minutes continuously. Wait for 2 minutes if you need to use it for longer.
- Switch off the appliance if the motor stalls or smoke emanates from the appliance. If this continues, call the Bosch service center.
- Never immerse the main unit in water or any other liquid. Do not rinse or wash in a dishwasher.

If this happens, switch off your mixer grinder and remove the excess ingredients. Add sufficient water if dealing with thick paste and wait for 2-3 minutes. Press the red reset button and start the mixer grinder again.



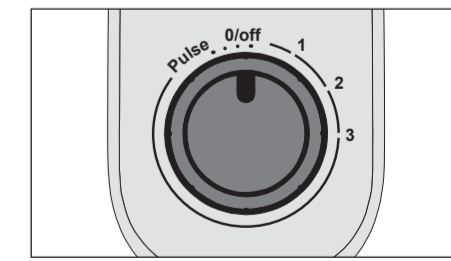
- You may observe some minor oil spillage in the Jars and Jar sockets during first two to three operations. This is normal. Thoroughly clean the minor oil spillages with water and wipe dry with soft cloth.

Preparation of ingredients

- Important!** Cool down any hot ingredients before putting in the jar.
- Cut large ingredients into small pieces approx. 2 cm in size before mixing/ grinding.

Regular use and operation

- For blending/liquidising/puréeing use "Pulse" on the speed selector knob. This will activate Pulse until you release the button. Use position 1-3 for continuous operation.
 1 = Lowest operating speed
 3 = Highest operating speed
 Hold down the jar lid gently while your mixer grinder is in operation.
- After switching off the mixer grinder, wait until the blade stops rotating completely and only then remove the lid or insert the spatula.



Operating your mixer grinder

Before using for the first time / using after a long time

- Before using the mixer grinder for the first time or using it after a long time, thoroughly clean all the parts that come into contact with food ingredients.
- Rotate the motor shaft by hand via the motor coupler, on top of the main unit. The motor shaft should rotate freely.
- Check that the speed selector is in the OFF position.
- Place the main unit on a smooth, stable and clean surface.

Caution!
 Never place plastic, paper or cloth under the mixer grinder as it may block the ventilation holes.

- Connect the main plug to the wall socket. Switch on the main supply and turn the speed selector knob to the required position and speed. After operation, turn the speed selector knob to the OFF position and check. Repeat until the desired results are obtained.

- Before removing the jar from the main unit, ensure that the power supply is disconnected.
- Avoid using your hand to fill or clean jars. It is safer and more hygienic to use the spatula.
- Avoid storing food in the jar.

