

dyson airwrap

dyson airwrap logo

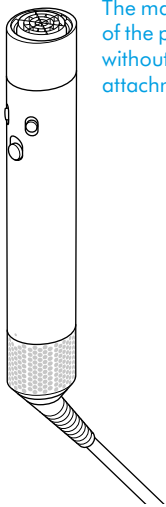
User manual



SV12 JN.00000 PN.000000-00-00
00.00.00 VERSION NO.01

In the box
Getting started
Using your attachments
Pre-styling
Curling
Shaping
Smoothing
Regular filter maintenance

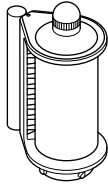
In the box



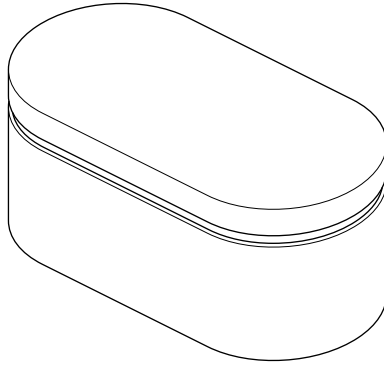
The main body of the product without any attachments.

Dyson Airwrap™ multi-styler main body

A flat, hook shaped nozzle

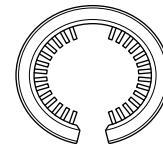


Coanda smoothing dryer



Storage case

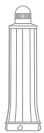
A cylindrical tool that fits on to the bottom of the Dyson airwrap styler



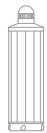
Filter cleaning brush

Some attachments may not be included.

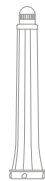
You can buy additional attachments at www.dyson.com/mynewairwrap



30mm Airwrap™ barrel



40mm Airwrap™ barrel



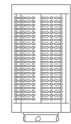
20mm Airwrap™ barrel



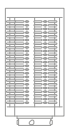
30mm Airwrap™ long barrel



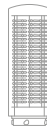
40mm Airwrap™ long barrel



Soft smoothing brush



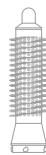
Firm smoothing brush



Small soft smoothing brush



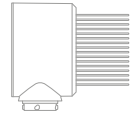
Small firm smoothing brush



Small round volumising brush

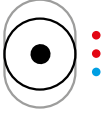


Round volumising brush



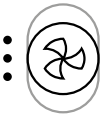
Wide-tooth comb

Getting started



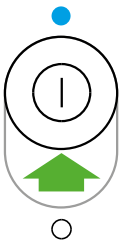
Temperature control
2 heat settings plus
a cold setting
to finish your style.

The temperature control
button is located on the
back, right hand side of
the handle.



Airflow control
3 airflow speeds.

The airflow control
button is located
on the back, left
hand side of the
handle.

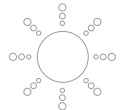
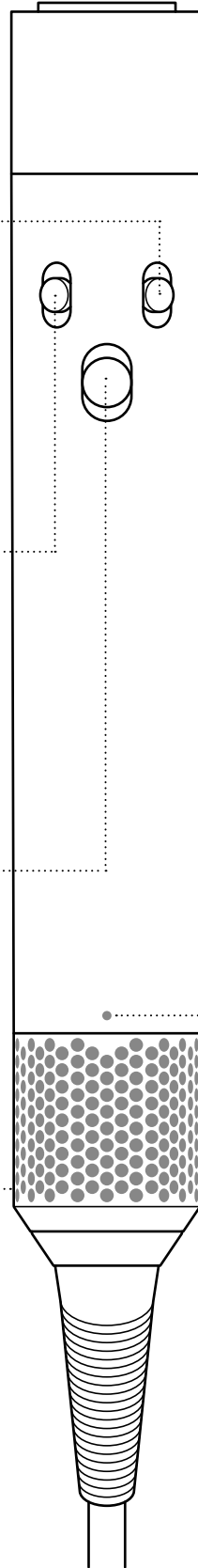


**Power on/off
with cold shot**
Sliding switch with
cold shot to set
your style.

The power button is
located in the middle
of the handle. It is a
slider button that pushes
upwards and downwards.

Removable filter cage
Easy to remove for cleaning
(see the 'Regular filter
maintenance' section
for details).

The filter cage is
located at the bottom
of the handle.



LED
Clean the filter.
See the 'Regular filter
maintenance'
section for details.

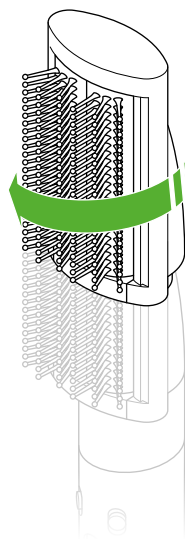
If the red LED lights,
and the filter has already
been cleaned, contact
the Dyson Helpline.

The LED lights are
located at the bottom
of the handle above the
filter cage

Using your attachments

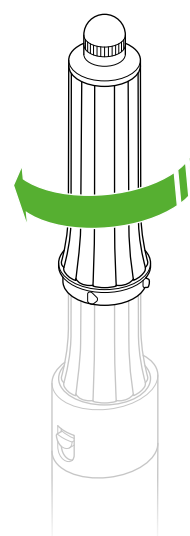
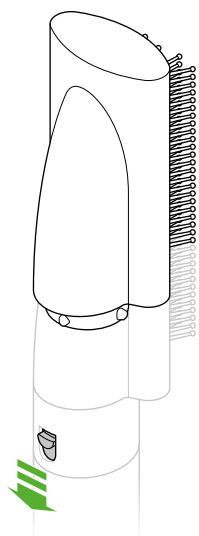
Connecting the attachment

Turn attachment into the main body until it fits securely.



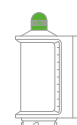
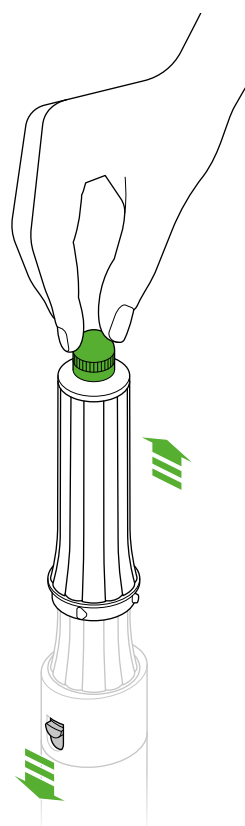
Changing attachments

To change attachment, pull down on the switch to release.



Cool touch tip

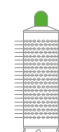
During use, the Airwrap™ barrels, Round volumising brush and Coanda smoothing dryer will get hot. To change to another attachment, hold the tip.



Coanda smoothing dryer



Airwrap™ barrel



Round volumising brush

Take care when handling hot attachments

Hold the attachment only in the area indicated. Some attachments may need occasional cleaning.

For more information, go to www.dyson.com/mynewairwrap

Pre-styling

Coanda smoothing dryer

Before curling, pre-dry the hair until almost dry.

Comes with two modes (i) drying (ii) smoothing.

Use the cool tip to switch between the two modes.

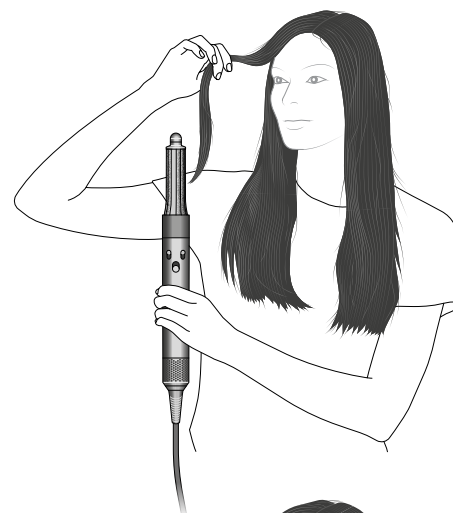


Curling

Barrels

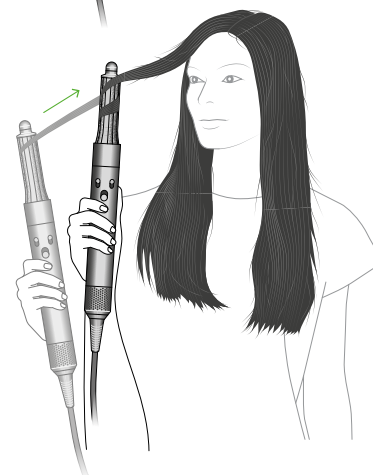
Step 1

Take a section of hair and bring barrel towards tips. Hair will start to wrap around barrel.



Step 2

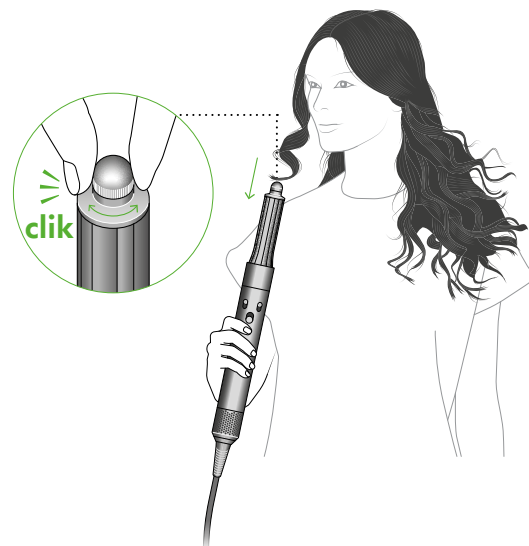
Move styler towards head, no need to twist. Hold for 15 seconds or until dry.



Step 3

Press cold shot for 5-10 seconds to set curl. Switch off to release.

To change curl direction, rotate the cool tip.



Shaping

Smoothing brushes

Step 1

Rough-dry hair with Coanda smoothing dryer.



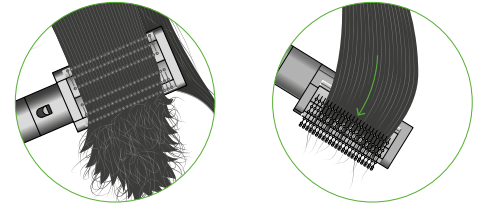
Step 2

Use Smoothing brush to brush from root to tip.

Tips:

For volume, face bristles outwards.

Turn brush inwards at the ends to create shape.

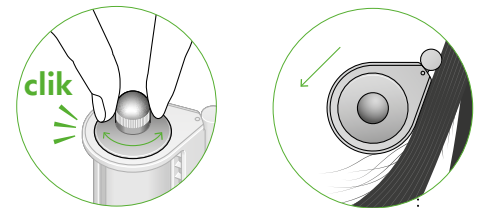


Smoothing

Coanda smoothing dryer

Rotate cool tip to select Smoothing mode.

Press against hair to switch airflow direction.



Step 3

Use on dry hair to hide flyaways.

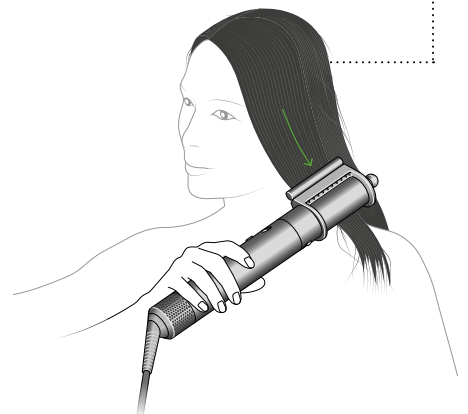
Position against hair until it attracts then slowly run down to tips.

For use on dry and straight hair.

How to use the contact bar

Position contact bar against the head until you hear a click and hair attracts.

Run from root to tip to hide flyaways.



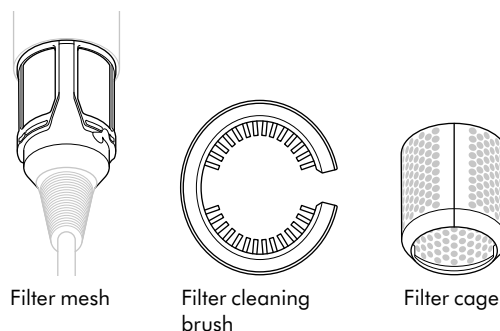
Regular filter maintenance

The filter must be cleaned when the white LED starts flashing.

Ensure that you unplug your appliance from the mains electricity supply and allow to cool down before cleaning your filter.

The Dyson Airwrap™ multi-styler has highly tuned technology to give outstanding performance.

This technology needs to be kept free from dust and hair product residue. Maintenance is required to maintain performance.

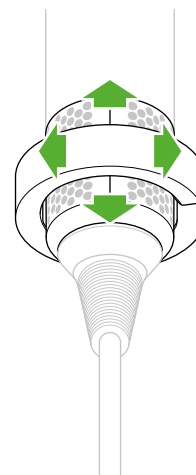


Step 1

Slide the filter cleaning brush over the cable and onto the filter cage.

Using a rotating action, clean the filter cage thoroughly.

Remove the filter cleaning brush.

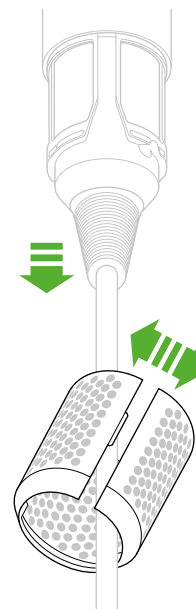


Slide the filter brush onto the filter cage and rotate to clean the filter cage

Step 2

Hold the handle of your appliance and pull the filter cage downwards, onto the cable.

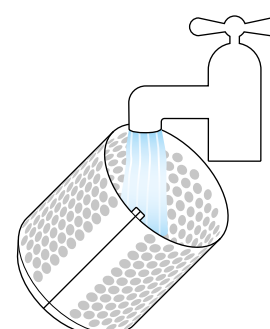
Gently pull open the filter cage and slide it off the cable.



Gently pull the filter cage downwards towards the cable.

Step 3

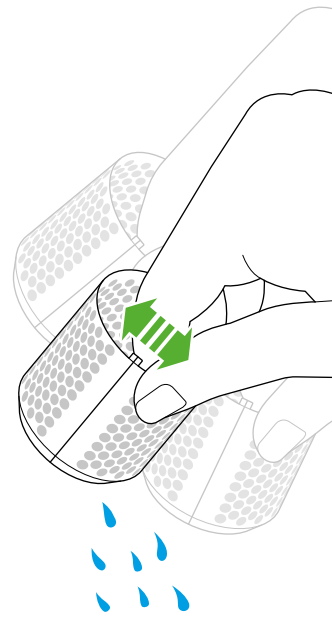
Wash the filter cage under a warm, running tap.



Wash the filter cage under the tap.

Step 4

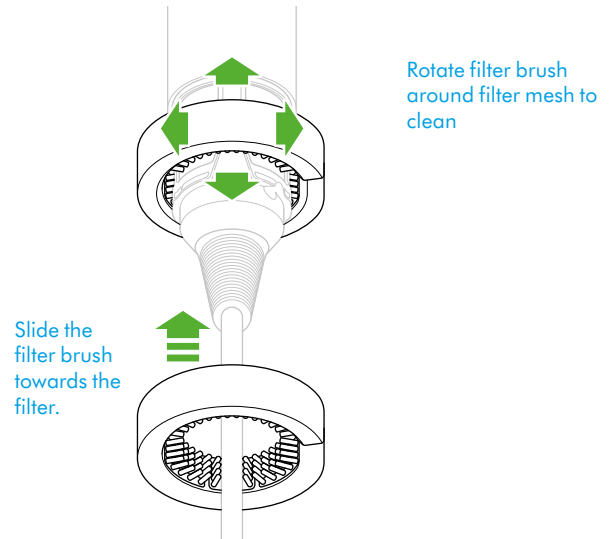
Shake the filter cage to remove the majority of the excess water, then leave to dry naturally.



Step 5

Using a rotating and up and down action, clean the filter mesh with the filter cleaning brush until all the debris has been removed.

Do not use water or chemicals to clean the filter mesh.



Step 6

Gently pull the filter cage open and slide it onto the cable.

Slide the filter cage towards the handle and twist until it snaps into place.

