



USER MANUAL

LG TONE Free

Bluetooth® LG Stereo Headset

NOTE: For the best performance and to prevent any damage to, or misuse of the headset, please read all of the information carefully prior to using the headset.

Any modifications or changes to this manual due to typographical errors or inaccuracies of stated information shall only be made by LG Electronics Inc.

Rev 3.0 ID



Google Play



App Store

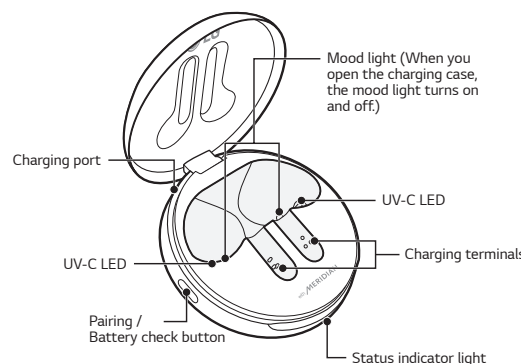
HBS-FN6 / HBS-FN5U
HBS-FN4

www.lg.com

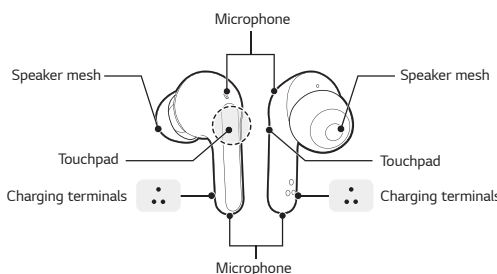
Copyright © 2020 - 2023 LG Electronics Inc. All rights reserved

Product Description

Charging Case



Earbuds

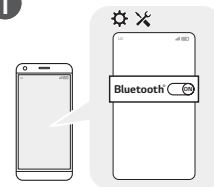


NOTE: HBS-FN4 does not have a UV-C LED and mood light.



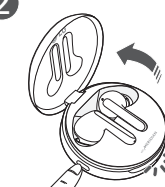
How to pair

1



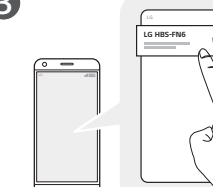
Activate *Bluetooth* on your phone or device.

2



While the earbud is mounted in the charging case, open the charging case lid and press the pairing button for 3 to 5 seconds until the blue indicator light blinks.

3



When the Fast Pair connection pop-up appears on the top area of the mobile phone screen, tap it to connect. (It only supports Android™ 6.0 or higher, and requires configuring *Bluetooth* and location information settings of the mobile device.)

4



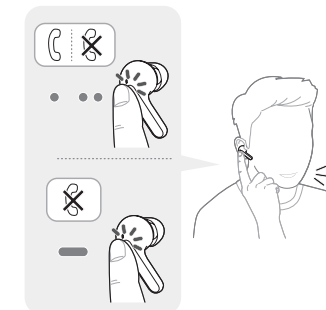
If the pop-up does not appear, select [LG HBS-FN6] from the *Bluetooth* menu on the mobile phone and connect it (for users of iOS or Android 5.0 or lower versions).

CAUTION: In the list of *Bluetooth* connected devices, LG HBS-FN6_LE is not the correct model name for connection. Check the model name in use and connect with the model name without "LE".

NOTE: To connect with another device, perform the above procedure again.



How to receive a call



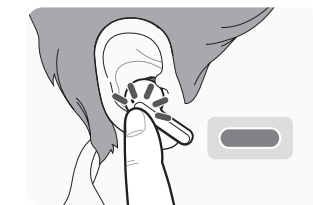
To receive a phone call, **touch the left or right earbud once.**

To end a phone call, **touch the left or right earbud twice.**

To reject a phone call, **touch and hold the left or right earbud.**



Listening to the ambient sound



Touch and hold the left or right earbud to hear the ambient sound.

You can adjust the intensity of the ambient sound in the LG TONE Free app.

The Listen to the Ambient Sound function works only when the product is on hold or playing music.

While using the listen to the ambient sound function, the battery discharges faster than usual.

CAUTION: When the Listen to the Ambient Sound mode is enabled, you may hear the ambient sound become loud suddenly.

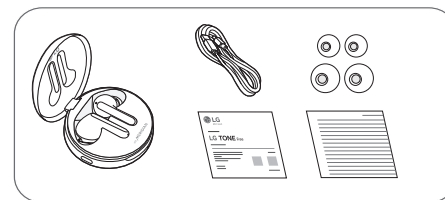


How to play music



Function	Description
Play / Pause	● : Touch the left or right earbud once.
Adjusting the Volume	●● : Touch the left (Decrease volume) or right (Increase volume) earbud twice.
Play Next	●●● : Touch the left or right earbud three times.

NOTE: On the LG TONE Free app, you can switch the operation mode through the touchpad settings.



NOTE: Actual product design may differ from images shown in manual.

* A mid-sized ear gel is attached to the earbud by default.

* The appearance and specifications of the actual product may differ depending on the model.

CAUTION

Make sure authentic LG Electronics components are used. Using a non-authentic component may damage the product and thus void the warranty. Use the USB Type C™ cable provided with the product.

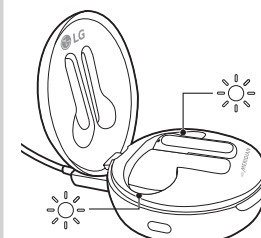
NOTE

The complete manual is available for download from the LG Electronics website.

www.lg.com > support or service > Manuals & Downloads > Manuals



UVnano Description



UV-C LED process operates for ten minutes and begins when charging case (with earbuds) is plugged in.

UV-C LED does not operate while device is charging wirelessly such as on a pad or third party wireless charging device (this apply to HBS-FN6 and HBS-FN5U).

- Independent testing shows the UVnano charging case kills 99.9% of bacteria (*Staphylococcus aureus* and *Escherichia coli*) on the speaker mesh of the earbuds in ten minutes while charging. The UV-C LED function works only when the charging case is connected to the power cable.

- For best result, it is recommended that the full 10 minutes of UV-C LED operation be performed while charging.

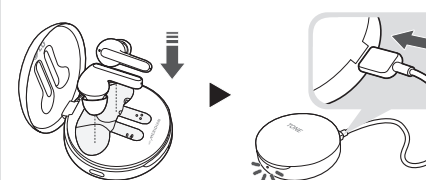
NOTE: The status indicator light blinks slowly during the UV-C LED operation. The light will slowly illuminate on and off until the UV-C LED function is complete (10 minutes). Once completed, the indicator light will switch back to the always-on battery indicator, see "Battery Status". HBS-FN4 does not have a UV-C LED and mood light. Performance may vary based on usage conditions. A white product may slightly differ in the color of the UV-C LED contact area, but there is no problem with the product performance. UV-C LED does not operate while charging wirelessly.

CAUTION: Be aware that the temperature of the earbuds may rise while the UV-C LED is operating. Avoid direct eye and skin exposure to UV light. Keep out of reach of children.



Battery Status

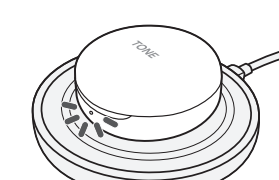
Wired Charging



When the charging cable is connected, the charging status is displayed in the charging case.

NOTE: The earbuds and the charging case are charged at the same time. The charging port on the charging case cannot be used to supply power to mobile phones, etc.

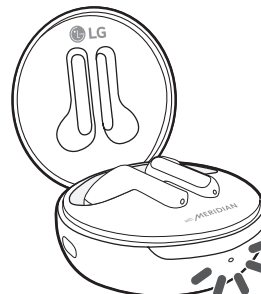
Wireless Charging



Align the bottom center of the charging case with the center of the wireless charger.

NOTE: The wireless charger is not provided. HBS-FN4 and HBS-FN5U models do not support wireless charging. The wireless charging function may not work in some wireless chargers. Wireless charging feature charges at a slower rate due to less power being transmitted to the charging case.

How to charge



If earbuds are mounted in the charging case, the earbuds' battery status is displayed. Otherwise, the charging case's battery status is displayed. If the earbuds are mounted in the charging case while plugged in, the UVnano process will commence for ten minutes. Once this process is complete, the charging case's battery status will be displayed.

Indicator Light	Battery Status
Red	Below 20% battery
Violet	Between 20% and 80% battery
Blue	Above 80% battery

NOTE : When the charging case lid is closed, charging case battery status is displayed. If the charging case has no remaining charge, there will be no display and it cannot function. We recommend you keep the charging case charged at all times as the earbuds are not able to be turned on and turned off independently.

4. Battery information

A rechargeable battery has a long service life if treated properly. A new battery or one that has not been used for a long period of time could have reduced capacity the first few times it is used. Do not expose the battery to extreme temperatures, never above +50°C (+122°F) or below -10°C (+14°F). For maximum battery capacity, use the battery at room temperature. If the battery is used in low temperatures, the battery capacity will be reduced. The battery can only be charged in temperatures between 0°C (+32°F) and +45°C (+113°F).

5. Recycling the battery in your Bluetooth Headset

The battery in your Bluetooth Headset must be disposed of properly and should never be placed in municipal waste.

6. Conditions

- The warranty is valid only if the original receipt issued to the original purchaser by the dealer, specifying the date of purchase and serial number, is presented with the product to be repaired or replaced. LG Electronics reserves the right to refuse warranty service if this information has been removed or changed after the original purchase of the product from the dealer.

- If LG Electronics repairs or replaces the product, the repaired or replaced product shall be warranted for the remaining time of the original warranty period or for ninety (90) days from the date of repair, whichever is longer. Repair or replacement may involve the use of functionally equivalent/reconditioned units. Replaced parts or components will become the property of LG Electronics.

LG TONE Free

If you install the "LG TONE Free" app, you can use Check Earbud Battery, Voice Alert, Change Equalizer Mode, Check Last Connected Location Information, and Find My Earbuds functions. Check out the app for more details. To install the "LG TONE Free" app, search LG TONE Free in the Google Play Store or App Store or scan the QR code below. It supports Android 5.0 or higher and iOS 11 or higher.



Safety Cautions

CAUTION

- Do not disassemble, adjust, or repair the product arbitrarily.
- Do not place the product near excessive heat or flammable material. The product may be damaged if an incompatible charger is used.
- Make sure that an infant or child does not swallow a magnet or a small component of the product.
- Make sure that foreign objects do not enter the charger's connectors (charging port and power plug). Failure to do so may result in fire or electric shock.

If you have a medical device implanted, contact your doctor before using this device. This product has a built-in battery, and the battery cannot be removed or replaced arbitrarily. For your safety, do not remove the battery incorporated in the product. If you arbitrarily replace the battery or don't replace it correctly, it may explode. The lithium-ion battery is a hazardous component that can cause injury. Battery replacement by an unqualified professional can cause damage to your device. Do not discard the battery arbitrarily. Follow the local procedure for discarding batteries. Disposal of a battery into fire or a hot oven, or mechanically crushing or cutting of a battery, that can result in an explosion. A battery subjected to extremely low air pressure that may result in an explosion or the leakage of flammable liquid or gas.

WARNING

- Do not drop the product from a high place.
- Make sure there is no water, alcohol, or benzene in contact with the product.
- Do not store the product in a wet or dusty place.
- Do not place heavy objects on the product.
- This product is waterproof to the IPx4 level (daily life waterproof). (The IPx4 waterproof rating applies to the earbud product only.)
- Do not put the product under the water or use it in a humid location such as a bathroom.

NOTE

- If the product is exposed to excessive sweat, clean the product.
- Keep the earbuds clean.

Troubleshooting

Problem	Solution
The power does not turn on	Check the battery level and charge it.
If unable to make a call with earbuds	If the mobile phone does not support headset and hands-free functions, you cannot use the calling features. Check the battery level and charge it.
If unable to register earbuds to mobile phone	Check whether earbuds are turned on. Check if the charging case of earbuds are in search mode. - Press the pairing button on the charging case to switch to search mode.
If you replaced the earbuds or there is a problem with the operation	Put the earbuds in the charging case and, with the case open, press the pairing button for 10 seconds or more. - The factory reset proceeds while the status indicator on the charging case flashes red. Please reconnect the device after factory reset.

Declaration of Confirmation

FCC NOTICE TO USERS:

This device complies with part 15 of the FCC Rules. Operation is subject to the following two conditions: (1) This device may not cause harmful interference, and (2) This device must accept any interference received, including interference that may cause undesired operation. Changes or modifications not expressly approved by the manufacturer (or party responsible) for compliance could void the user's authority to operate the equipment.

FCC Part 15.105 statement

This equipment has been tested and found to comply with the limits for a Class B digital device, pursuant to Part 15 of the FCC Rules. These limits are designed to provide reasonable protection against harmful interference in a residential installation. This equipment generates, uses and can radiate radio frequency energy and, if not installed and used in accordance with the instructions, may cause harmful interference to radio communications. However, there is no guarantee that interference will not occur in a particular installation. If this equipment does cause harmful interference to radio or television reception, which can be determined by turning the equipment off and on, the user is encouraged to try to correct the interference by one or more of the following measures:

- Reorient or relocate the receiving antenna.
- Increase the separation between the equipment and receiver.
- Connect the equipment into an outlet on a circuit different from that to which the receiver is connected.
- Consult the dealer or an experienced radio/TV technician for help.

IMPORTANT NOTE:

To comply with the FCC RF exposure compliance requirements, no change to the antenna or the device is permitted. Any change to the antenna or the device could result in the device exceeding the RF exposure requirements and void user's authority to operate the device.

DECLARATION OF CONFORMITY:

Hereby, LG Electronics declares that the radio equipment type this headset is in compliance with Directive 2014/53/EU. The full text of the EU declaration of conformity is available at the following internet address: <http://www.lg.com/global/declaration>

Bluetooth® is a registered trademark of Bluetooth SIG, Inc. worldwide. Android, Google Play, the Google Play logo, and other related marks and logos are trademarks of Google LLC.




FCC ID: ZNFHBSFN6

Battery



Pb

- This symbol may be combined with chemical symbols for mercury (Hg), cadmium (Cd) or lead (Pb) if the battery contains more than 0.0005% of mercury, 0.002% of cadmium or 0.004% of lead.
- All batteries/accumulators should be disposed separately from the municipal waste stream via designated collection facilities appointed by the government or the local authorities.
- The correct disposal of Your old batteries/accumulators will help to prevent potential negative consequences for the environment, animal and human health.

RISK GROUP 2	
	CAUTION : UV EMITTED FROM THIS PRODUCT. EYE OR SKIN IRRITATION MAY RESULT FROM EXPOSURE. USE APPROPRIATE SHIELDING.
	WARNING : WHEN OPENING THE CHARGING CASE OR WIRELESS CHARGING, THE UV FUNCTION DOES NOT WORK.

Additional Information

1. Radio frequency exposure

This Bluetooth LG Stereo Headset is a radio transmitter and receiver. When in operation, it communicates with a Bluetooth-equipped mobile device by receiving and transmitting radio frequency (RF) electromagnetic fields (microwaves) in the frequency range 2402 to 2480 MHz. Your Bluetooth headset is designed to operate in compliance with the RF exposure guidelines and limits set by national authorities and international health agencies when used with any compatible LG Electronics mobile phone.

2. Bluetooth connection precautions

The following environments affect the range and reception of Bluetooth signals:

- When walls, metal, human bodies, or other obstacles exist between the Bluetooth device and the connected device.
- When equipment that uses 2.4 GHz frequency signals (wireless LANs, wireless phones, microwave ovens, etc.) is placed near the devices being used.
- When using a Bluetooth device (TV, laptop, etc.) other than the mobile phone, the sound quality may be affected by the specifications and performance of the device.

3. Potentially explosive atmosphere

Turn off your electronic device when in any area with a potentially explosive atmosphere. Although this is uncommon, your electronic device could generate sparks. Sparks in such areas could cause an explosion or fire resulting in bodily injury or even death. Areas with a potentially explosive atmosphere are often but not always clearly marked.

Specifications and Features

Item	Comments
Bluetooth Specifications	V 5.0 (Headset/Hands-Free/A2DP/AVRCP)
Battery	Earbud : 3.7 V / 55 mAh, Lithium-ion Charging case : 3.7 V / 390 mAh, Lithium-ion
Talk Time (Earbuds / With Charging case)	Up to 5 / 15 hours*
Music Play Time (Earbuds / With Charging case)	Up to 6 / 18 hours*
Charging Time	Earbud : within an hour / Charging case : within 2 hours Fast Charging : 5 min charge for up to 60 min playtime ※ When charging wired at room temperature
Rated Input Voltage	Earbud : DC 5 V, 110 mA Charging case : DC 5 V, 500 mA
Operating Temperature	0 °C (+32 °F) ~ +40 °C (+104 °F)
Dimensions (mm) / Weight (g)	Earbud : 16.1 mm (W) X 32.65 mm (L) X 25.0 mm (H) / 5.4 g (One earbud) Charging case : 54.5 mm (W) X 54.5 mm (L) X 27.5 mm (H) / 39 g
Frequency range	2402 MHz to 2480 MHz
Output power (Max)	10 dBm

*Duration of use may vary depending on the connected mobile device, features being used, settings, signal strength, operating temperature, frequency band, and other methods of use. Fast charging feature does not apply when charging case is placed on wireless charging device such as a pad. Wireless charging feature charges at a slower rate due to less power being transmitted to the charging case.

1 2 3 4 5 6

Open Source Software Notice Information

To obtain the source code under GPL, LGPL, MPL, and other open source licenses, that is contained in this product, please visit <http://opensource.lge.com>.

In addition to the source code, all referred license terms, warranty disclaimers and copyright notices are available for download.

LG Electronics will also provide open source code to you on CD-ROM for a charge covering the cost of performing such distribution (such as the cost of media, shipping, and handling) upon email request to opensource@lge.com.

This offer is valid for a period of three years after our last shipment of this product. This offer is valid to anyone in receipt of this information.

Environmental information



Disposal of your old appliance (as per e-waste Rules)

- When this crossed out wheeled bin symbol is depicted on the product and its operator's manual, it means the product is covered by E-Waste Management Rules India published by MoEF & CC, Govt. of India and are meant to be recycled, dismantled, refurbished or disposed off.
- Do's**
 - The product is required to be handed over only to the authorized recycler for disposal.
 - Keep the product in isolated area, after it becomes non-functional/ unrepairable so as to prevent its accidental breakage.

Don'ts

- The product should not be opened by the user himself/herself, but only by authorized service personnel.

- The product is not meant for re-sale to any unauthorized agencies/scrap dealer/ kabariwala.
 - The product is not meant for mixing into household waste stream.
 - Do not keep any replaced spare part(s) from the product in exposed area.
- Any disposal through unauthorized agencies/person will attract action under Environment (Protection) Act 1986.
 - This product is complied with the requirement of Hazardous Substances as specified under E-Waste Management Rules India published by MoEF & CC, Govt. of India.
 - To locate a nearest collection centre or call for pick-up (limited area only) for disposal of this appliance, please contact No. 08069379999, Toll Free No. 1800-315-9999 for details. All collection centre and pick up facilities are done by third parties with LG Electronics India Pvt. Ltd. Merely as a facilitator. For more detailed information, please visit : <http://www.lg.com/in>.

7 8 9 10 11 12 13 14