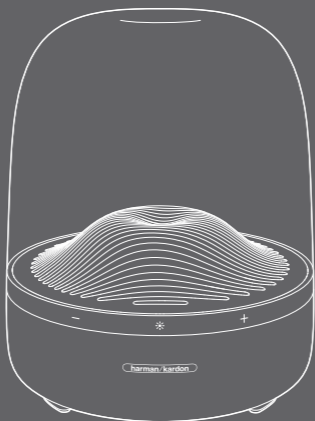


AURA STUDIO 3



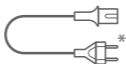
Quick Start Guide

For more information, please visit harmankardon.com

harman/kardon[®]
by HARMAN



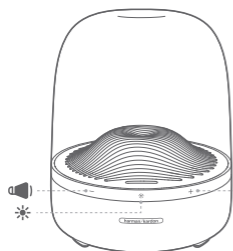
/ 1. WHAT'S IN THE BOX



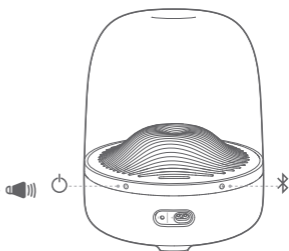
* Power cord quantity and plug type vary by regions.

/ 2. BUTTONS

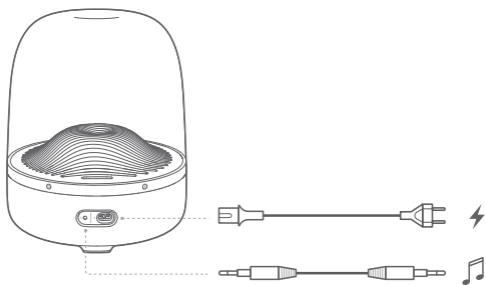
Front



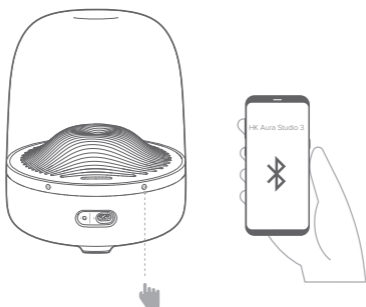
Back



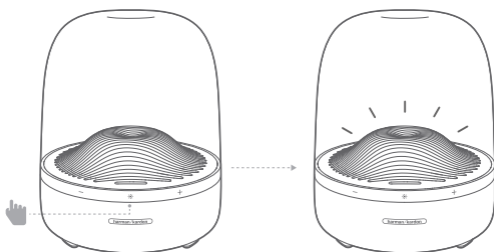
/ 3. CONNECTIONS



/ 4. BLUETOOTH® PAIRING



/ 5. LIGHTING ON/OFF



/ EN

- Bluetooth version: 4.2
- Support: A2DP 1.3, AVRCP 1.6
- Transducers: 40 mm x 6 pcs (Mid-high range); 130 mm x 1 pc (Subwoofer)
- Rated power: 2 x 15 W RMS + 1 x 100 W RMS
- Frequency response: 45 Hz – 20 kHz (-6 dB)
- Signal to noise ratio: 80 dB at 15 W (Mid-high range);
80 dB at 100 W (Subwoofer)
- Power supply: 100 – 240 V ~ 50/60 Hz
- Bluetooth transmitter power: 0 – 9 dBm
- Bluetooth transmitter frequency range: 2.402 – 2.480 GHz
- Bluetooth transmitter modulation: GFSK, $\pi/4$ DQPSK, 8DPSK
- Dimension (H x W x D): 283.6 x 232 x 232 mm / 11.2" x 9.1" x 9.1"
- Weight: 3.6 kg (7.9 lb)

/ PL

1. ZAWARTOŚĆ ZESTAWU
2. PRZYCISKI: PRZEDNI, TYLNY
3. POŁĄCZENIA

4. PAROWANIE Z URZĄDZENIEM BLUETOOTH®
5. PODŚWIETLENIE WŁ./WYŁ.

- Wersja Bluetooth: 4.2
- Obsługa: A2DP 1.3, AVRCP 1.6
- Przetworniki: 40 mm x 6 szt. (średnio-wysokotonowe);
130 mm x 1 szt. (subwoofer)
- Moc znamionowa: 2 x 15 W RMS + 1 x 100 W RMS
- Pasma przenoszenia: 45 Hz – 20 kHz (-6 dB)
- Stosunek sygnału do szumu: 80 dB przy 15 W (średnio-wysokotonowe);
80 dB przy 100 W (subwoofer)
- Zasilanie: 100 – 240 V ~ 50/60 Hz
- Moc nadajnika Bluetooth: 0 – 9 dBm
- Zakres częstotliwości nadajnika Bluetooth: 2,402 – 2,480 GHz
- Modulacja nadajnika Bluetooth: GFSK, $\pi/4$ DQPSK, 8DPSK
- Wymiary (wys. x szer. x głęb.): 283,6 x 232 x 232 mm / 11,2" x 9,1" x 9,1"
- Masa: 3,6 kg (7,9 funta)

/ PT-BR

1. CONTEÚDO DA CAIXA
2. BOTÕES (PARTE FRONTAL E TRASEIRA)

3. CONEXÕES
4. EMPARELHAMENTO BLUETOOTH®
5. LIGA/DESLIGA A ILUMINAÇÃO

- Versão Bluetooth: 4.2
- Suporte a A2DP 1.3 e AVRCP 1.6
- Transdutores: 6 x 40 mm (mid-range e agudos); 1 x 130 mm (subwoofer)
- Potência nominal: 2 x 15 W RMS + 1 x 100 W RMS
- Resposta de frequência: 45 Hz a 20 kHz (-6 dB)
- Relação sinal/ruído: 80 dB a 15 W (mid-range e agudos);
80 dB a 100 W (subwoofer)
- Alimentação de energia: 100 a 240 V ~ 50/60 Hz
- Potência de transmissão Bluetooth: 0 a 9 dBm
- Intervalo de frequência de transmissão Bluetooth: 2,402 a 2,480 GHz
- Modulação de transmissão Bluetooth: GFSK, $\pi/4$ DQPSK e 8DPSK
- Dimensões (A x L x P): 283,6 x 232 x 232 mm / 11,2" x 9,1" x 9,1"
- Peso: 3,6 kg (7,9 lb)