

TOSHIBA

OWNER'S MANUAL

Front Loading Washing Machine



PLEASE READ THIS MANUAL

Inside you will find many helpful hints on how to use & maintain your washing machine properly. Just a little preventive care on your part can save you a great deal of time and money over the life of your washing machine.

*Product colour and image may vary from the actual product.

TW-BJ80S2-IND
TW-BJ85S2-IND
TW-BJ90S2-IND

Carrier Midea India Pvt. Ltd.
1st Floor, Pearl Tower, Plot No. 51, Institutional Area,
Sector-32, Gurugram-122 001, (Haryana)
Ph.:- 0124 6144300



Helpline: **1800 1039 119**



in.toshiba-lifestyle.com





Table of Contents

Check on receiving.....	3
Key Features.....	4
Know your Washing Machine.....	5
User Interface Control Panel.....	6
Safety & Precautions.....	7
Safety Instruction.....	8 - 9 - 10
Operating the appliance.....	11
Installation.....	12
Steps Before Washing.....	13-14 - 15
Operations.....	16
Wash Programs & Special Features.....	17
Operations.....	18-19
Cleaning & Maintenance.....	20-21
Trouble Shooting.....	22
Technical Specifications.....	23
E-Waste Management Guidelines.....	24-25
Product Warranty Terms & Conditions.....	26-27
Notes.....	28-29
Memo.....	30
Warranty Card.....	31



Check on Receiving

On receiving your Toshiba Washing Machine

Toshiba adopts a stringent policy to ensure safe delivery of all its products. All product shipment are thoroughly checked, packed and quality certified before leaving our manufacturing. Please don't accept any product if there is any visible loss or damage of the Good and ask delivery person to make the note on the freight bill or receipt.

On Opening the box

When a shipment has been delivered to you in apparent good conditions, but upon opening the box, if there is any loss or damage that has taken place due to transit, please inform the Toshiba Service Centre immediately.

About your instruction/usage manual

This manual is a guide to good usage and operating instructions for your new Toshiba Washing Machine.

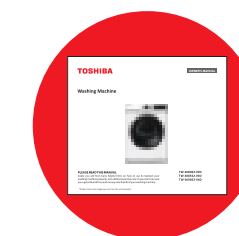
This manual does not contain all product service related procedures required for continued successful operation of this product. The services of Toshiba Authorized Service Person must be employed on periodical basis for the same.

Do not operate the product before reading the manual supplied with this product and follow instructions to ensure personal safety and proper operations.

Carrier Midea India Limited assumes no liability for installation performed by any unauthorized person.

Always install, operate, inspect and maintain this product in accordance with the applicable standards.

Please store this user manual carefully for any future reference.



Key Features



THE GREAT WAVES™

Inspired by Japanese famous painting 'The Great Wave off Kanagawa', the innovative technology is named 'THE GREAT WAVES™'. THE GREAT WAVES™ technology helps in leading to greater saving and color protecting performance for your laundry.



Real INVERTER

As compared to conventional motor, Real inverter is much quieter.



WIDE DOOR

This door is as wide as 480mm which helps in efficient / faster putting of laundry inside the machine. User will save time and avoid multiple loading.



ColorAlive™

This washing machine helps in efficient washing of laundry with reduced decolouration

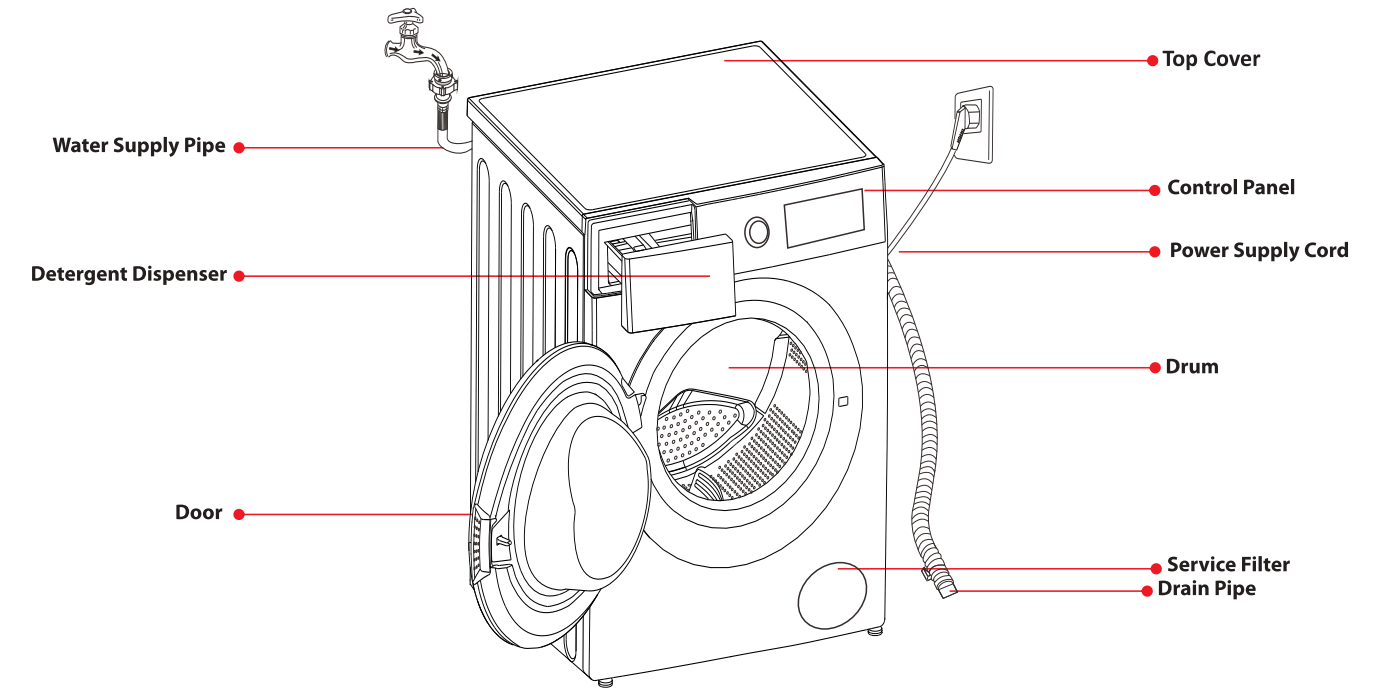


LED Display

Help to control each and every process and time programming with a user-friendly LED display.



Know Your Washing Machine



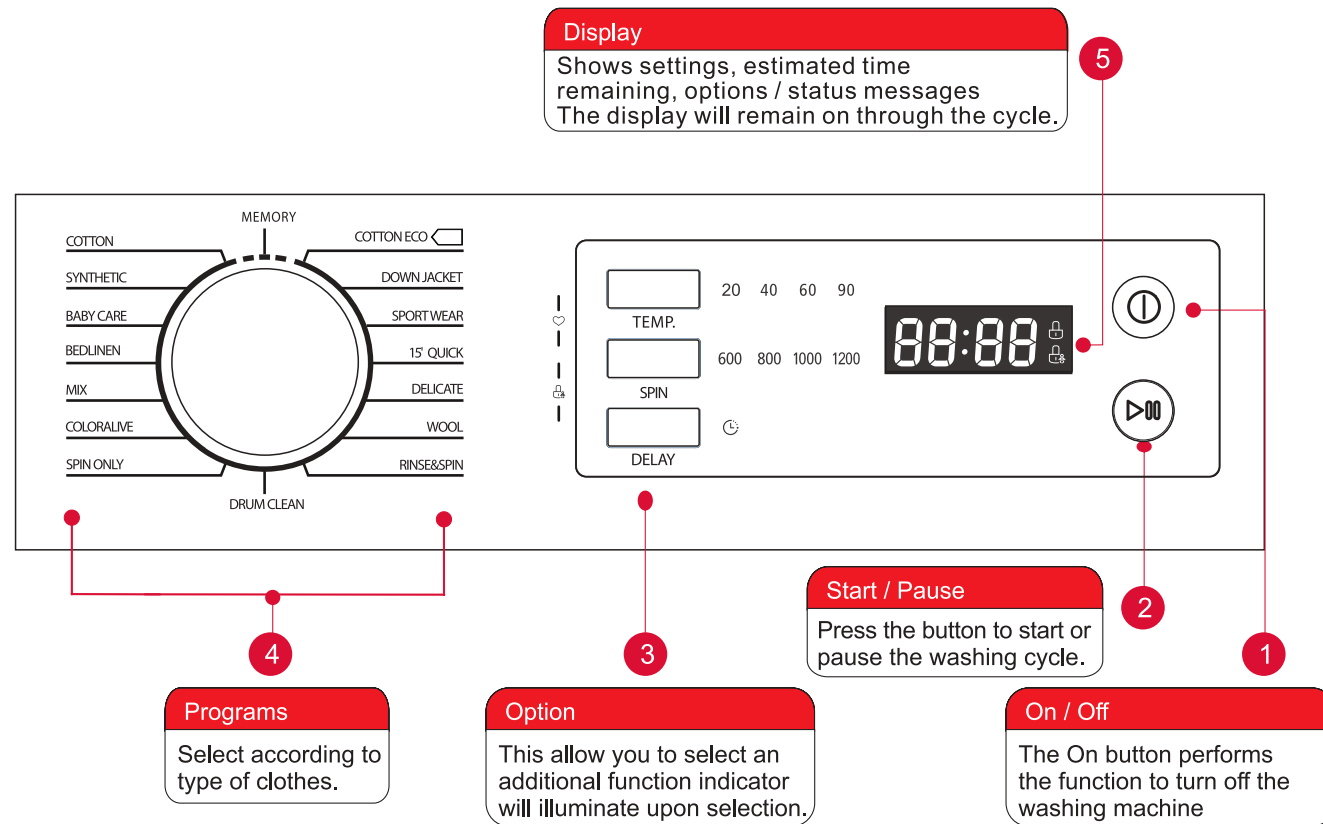
Accessories

Transport Hole Plug	Supply Hose Cold/ Hot Water*	Drain Hose Support (Optional)	User Manual	Rat Resistance Panel	Spanner assembly (Optional)	Screw (Optional)

NOTE!

The product line chart is for reference only, please refer to real product as standard.

User Interface Control Panel



Display
Shows settings, estimated time remaining, options / status messages
The display will remain on through the cycle.

Start / Pause
Press the button to start or pause the washing cycle.

Programs
Select according to type of clothes.

Option
This allow you to select an additional function indicator will illuminate upon selection.

On / Off
The On button performs the function to turn off the washing machine

NOTE!

• The chart is for reference only, Please refer to real product as standard.

Safety & Precautions

Observe the following signs in order to prevent any injury and damage to property:

Warning!



This graphic represents (pay attention), and detailed cautions will be displayed inside the graphic.

Prohibition!



This graphic represents (operation prohibited), and detailed prohibitive items will be displayed inside the graphic.

Caution!



This graphic represents (forcible execution), & detailed forcible execution items will be displayed inside the graphic.

Note!

This combination of symbol and signal word indicates a potential dangerous situation which may result in slight or minor injuries.

NOTE : This appliance is not intended for use by persons (including children) with reduced physical, sensory or mental capabilities or lack of knowledge, unless experienced and they have been given supervision or instruction concerning use of the appliance by a person responsible for their safety. Children should be supervised to ensure that they do not play with the appliance.

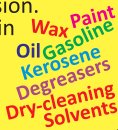


! Safety Instruction / Risk of explosion!

Flammable and explosive or toxic solvents are forbidden. Gasoline and alcohol etc. Shall not be used as detergents. Please only select the detergents suitable for machine washing, especially for drum.



Do not wash/dry articles that have been cleaned/washed/soaked/dabbed with combustible/explosive substances. This may result in fire or explosion. Before putting in machine rinse or wash them by hand.



Washing machine shall not be installed in bath room or very wet rooms as well as in the rooms with explosive or caustic gases.



! Safety for Kids

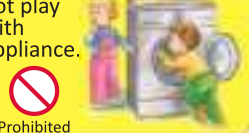
The appliance can be used by children aged from 8 years and above if they have been given supervision or instruction concerning use of the appliance in a safe way and understand the hazards involved. >8 Years



The appliance can be used by persons with reduced physical, sensory or mental capabilities if they have been given supervision or instruction concerning use of the appliance in a safe way and understand the hazards involved.



Children shall not play with the appliance. Children of less than 3 years should be supervised to ensure that they do not play with appliance.



Animals and children may climb into the machine. Check the machine before every operation.



Glass door may be very hot during the operation. Keep kids and pets far away from the machine during the operation very wet rooms as well as in the rooms with explosive or caustic gas.



Cleaning and user maintenance shall not be made by children without supervision.



! Safety Instruction / Installing the product!

Make sure that the water and electrical devices must be connected by Toshiba authorised service technician in accordance with the local safety regulations.



This washing machine is for indoor/home use only. It is only designed for the textiles suitable for machine washing.



This washing machine is not intended to be used as built-in.



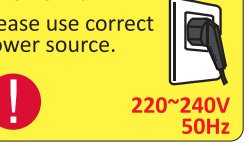
The washing machine with single inlet valve only can be connected to the cold water supply. The product with double inlet valves should be correctly connected to the hot water and cold water supply.



The openings must not be obstructed by a carpet.

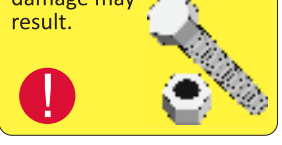


Plug must be accessible after installation. Please insert the power plug tightly. Please use correct power source.



220~240V 50Hz

Remove all packages and transport bolts before using the appliance. Otherwise, serious damage may result.



Please ensure that the water inlet pipe is connected and the tap is opened before washing clothes.



! Risk of damaging the appliance!

Do not climb up and sit on top cover of the machine.



Do not lean against machine door.



Transport bolts shall be reinstalled to the machine by Toshiba authorised service technician.



The accumulated water shall be drained out of the machine.



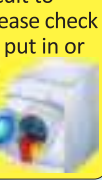
Handle the machine carefully. Never hold each protruded part on the machine while lifting. Machine door can not be used as the handle during the movement.



This appliance is heavy. Transport with care.



Please do not close the door with excessive forces. If it is found difficult to close the door, please check if the clothes are put in or distributed well.



It is forbidden to wash carpets.



Cautions during Handling Machine



⚠ Safety Instruction / Risk of explosion!

Please do not disassemble and assemble the machine on your own.

No dismantling

Please do not install the machine in damp & rainy environment to avoid electric shocks, fire, faults & distortion accidents.

No dampness

Please pull out plug from the socket if the machine is not in use.

Pull out the plug

Make sure the earthing line of socket is connected to earth to prevent any electric shock or accident caused by leakage of current. (earthing)

Earthing

Please do not directly rinse the machine with water while cleaning.

No rinsing

It is prohibited to wash the clothes stained with kerosene, gasoline, alcohol & other flammable materials.

Prohibited

Please do not damage power flexible cord & power plug to avoid electric shocks, short circuit and fire.

Prohibited

Regularly clean the power plug to remove dust & dirt to avoid contact failure.

⚠ Caution

Please do not place burning candle, mosquito-repellent, incense, cigarette & other flammable things, electric stove, air heating fan & other heating sources on the lid of washing machine.

Smoke and fire prohibited

Please don't pull out or insert the plug with wet hands to avoid electric shock.

Wet hands are prohibited

Please do not pull the electric cord while taking out the power plug.

Users are not advised to changed the plug on their own. If required please contact Toshiba Call Centre.

Prohibited

Please do not wash raincoat, fishing coat & water proof clothes in the washing machine.

Prohibited

The water temperature shall not exceed 50°C, when washing with warm water.

Prohibited

⚠ Operating the appliance!

Before washing the clothes at first time, the product shall be operated in one round of the whole procedures without the clothes inside.

Make sure that all pockets are emptied. Sharp and rigid items such as coin, brooch, nail, screw or stone etc. may cause serious damages to this machine.

Please check whether the water inside the drum has been drained before opening its door. Please do not open the door if there is any water visible.

Be careful of burning when the product drains hot washing water.

Never refill the water by and during washing.

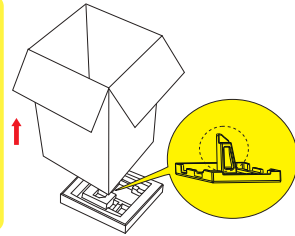
After the program is completed, Please wait for two minutes to open the door.

Installation

1 Unpacking the Washing Machine

WARNING!

- Packaging material (e.g. Films, styrofoam) can be dangerous for children.
- There is a risk of suffocation. Keep packaging materials away from children.

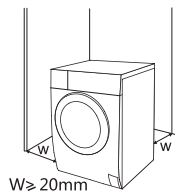


1. Remove the cardboard box and styrofoam packing.
2. Lift the washing machine and remove the base packing. Make sure the small triangle foam is removed from the bottom. If not, lay the unit downwards with side surface, then remove the small foam from the bottom unit manually.
3. Remove the tape securing the power supply cord and drain pipe.
4. Remove the inlet pipe, Manual & Transport hole plug from the drum.

3 Installation Area

WARNING!

- Even and flat surface should be selected for stable and trouble free operation of the washing machine.



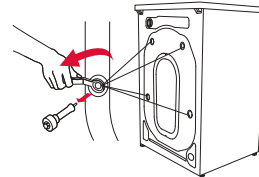
2 Remove Transport Bolts

WARNING!

- You must remove the transport bolts from the backside before using the Washing Machine.
- You'll need the transport bolts again, if you wish to shift the washing machine to different place, so make sure you keep them in a safe place.

Please take the following steps to remove the bolts:

1. Loosen 4 bolts with spanner & then pull them out.
2. Stop the holes with transport hole plugs.
3. Keep the transport bolts safely & properly for future use.



Make sure installation is done at:

1. Rigid, dry and leveled surface
2. Avoid direct sunlight
3. Sufficient ventilation
4. Room temperature should be above 0°C.
5. Keep it far away from heat sources such as coal or gas.



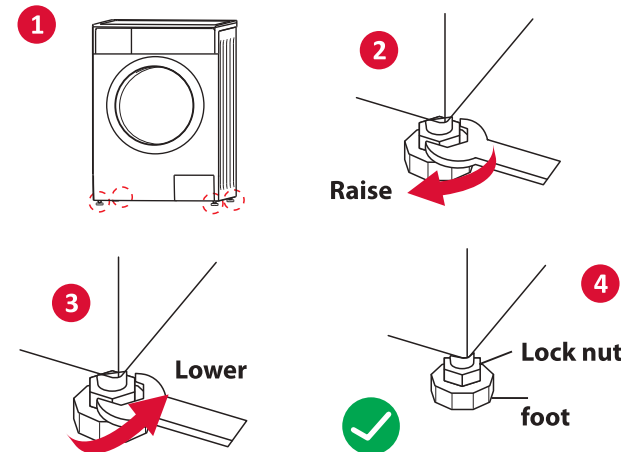
Steps Before Washing

4 Levelling the Washing Machine

WARNING!

- The lock nuts on all four feet must be screwed tightly against the body.

1. Check if the legs are closely attached to the cabinet. If not, please turn them to their original positions & tighten the nuts.
2. Loosen the lock nut turn the feet until it is closely in contact with the floor.
3. Adjust the legs and lock them with a spanner, make sure the machine is steady.



5 Connect Water Supply Pipe

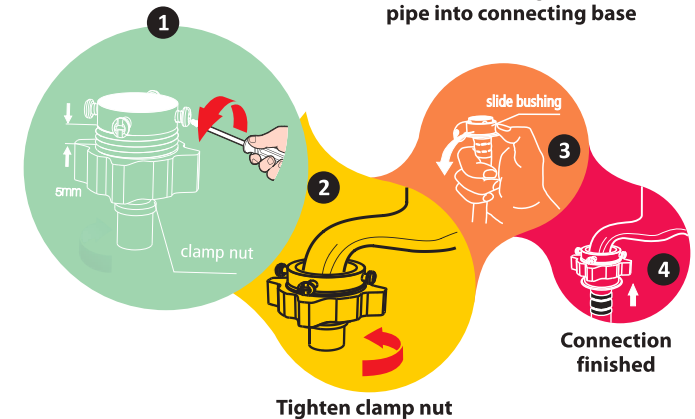
WARNING!

- To prevent water leakage follow the instructions given below.
- Do not kink, crush, modify water inlet pipe or drain pipe.

Connect the inlet pipe as indicated, there are two ways to connect the inlet pipe.

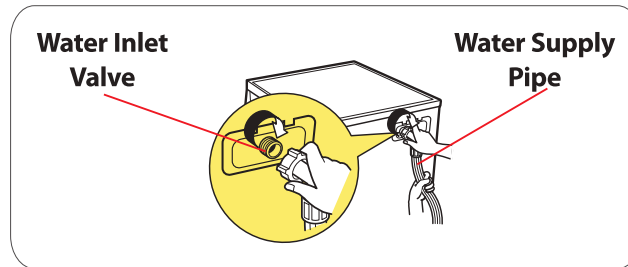
Loosen clamp nut & 4 bolts

Press slide bushing, insert inlet pipe into connecting base



Steps Before Washing

Connect the other end of inlet pipe to the inlet valve at the backside of washing machine & fasten the pipe tightly clockwise.



Drain Pipe

WARNING!

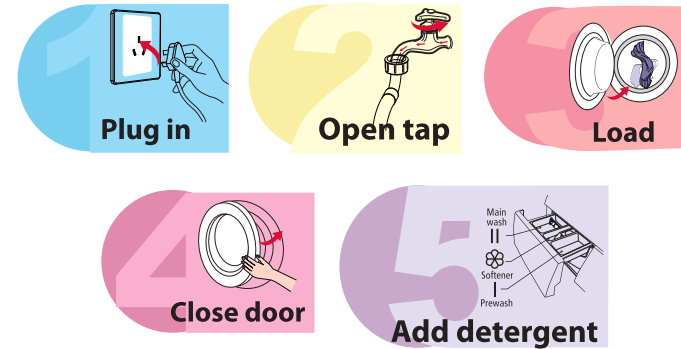
- Position drain pipe properly, otherwise damage might result to water leakage.

Quick Start

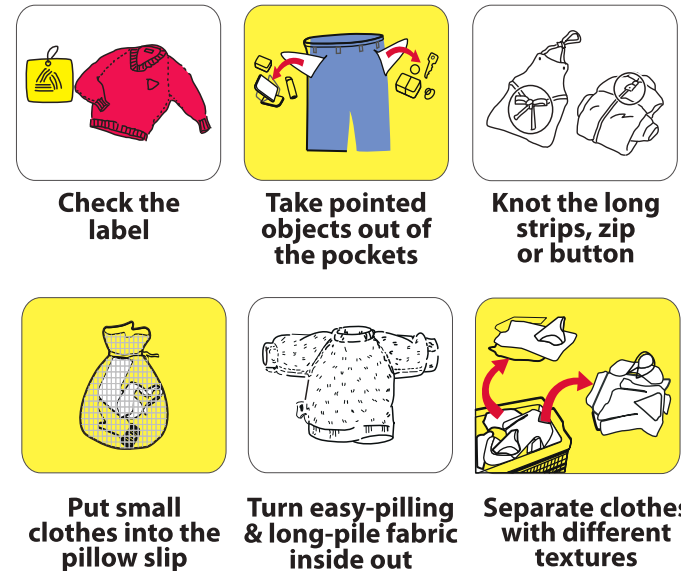
WARNING!

- Before washing, please make sure it's installed properly.
- Before washing for the first time, washing machine shall be operated in one round of all procedures without the clothes in as follows:

1. Before Washing



2. Before Loading

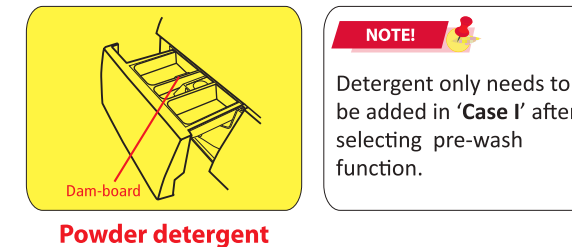
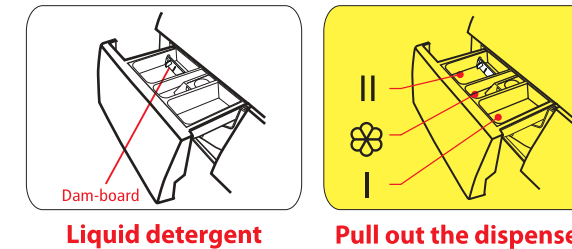


Steps Before Washing

3. Adding Detergent

Detergent Dispenser

- I Pre wash detergent II Fabric conditioner or softener
- III Main wash detergent softener



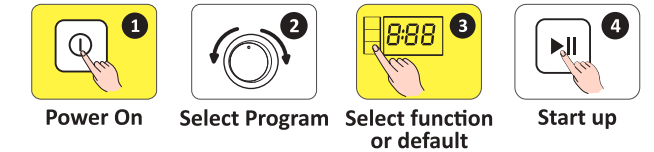
- NOTE!**
- For powdered detergent or additive, before they are poured into the detergent box, it is recommended to use some water for dilution to prevent the inlet of detergent box from being blocked and overflowing while filling water.
 - Please choose suitable type of detergent for different washing temperature to get the best washing results with less water and energy consumption.
 - As for the agglomerated or ropy detergent or additive, before they are poured into the detergent box, it is suggested to use some water for dilution to prevent the inlet of detergent box from being blocked and overflowing while filling water.
 - Please choose suitable type of detergent for the various washing temperature to get the best washing performance with less water and energy consumption.

■ Before Each Washing

- The working condition of the washing machine should be (0-40°C). If used under 0° C, the washing machine should be transferred to normal ambient temperature immediately to ensure the water supply and drain pipe are not frozen & draining system might get damaged before use.
- Please check the labels and explanation of using detergent before wash. Use non-foaming or less-foaming detergent suitable for better results.

- Please check the labels and explanation of using detergent before wash. Use non-foaming or less-foaming detergent suitable for better results.

4. Washing



NOTE!

- Step 3 is optional, use it if prewash or extra rinse to be used.

WARNING!

- When washing a single cloth, alarm might ring due to unbalance. Therefore, it is suggested to add one or two more clothes to be washed together so that draining can be done smoothly.
- Don't wash the clothes soaked in kerosene, gasoline, alcohol & other flammable materials.

5. After Washing

After wash cycle completes, the buzzer will beep to alert the user.

Operations

Programs are available according to the clothes type.

PROGRAMS	
COTTON	Hard-wearing textiles, heat-resistant textiles made of cotton or linen.
BABY CARE	Washing the baby's clothes, it can make the baby's wear cleaner and make the rinse performance better to protect the baby skin.
MIX	Mixed load consisting of textiles made of cotton and synthetics.
COLORALIVE	Washing brightly colored clothes, it can protect the colors better.
COTTON ECO	This program is designed for energy and washing time saving.
MEMORY	To memorize the frequently used program by pressing [TEMP.] and [SPIN] 3 sec. The default setting is COTTON.
SYNTHETIC	Wash synthetic articles, for example: shirts, coats, blending. While washing the knitting textiles, detergent quantity shall be reduced due to its loose string construction and easily forming bubbles.
DELICATE	For delicate, washable textiles, e.g. made of silk, satin, synthetic fibres or blended fabrics.
SPIN ONLY	Extra spin with selectable spin speed.
WOOL	Hand or machine-washable wool or richwool textiles. Especially gentle wash programme to prevent shrinkage, longer programme pauses (textiles rest in wash liquor).
BEDLINEN	This program is specially designed for washing Bedlinen.
DRUM CLEAN	This program is specially set in this machine to clean the drum and tub. It applies 90°C high temperature water to sterilize the drum and tub. When this procedure is performed, the clothes must not be put in the drum. When proper amount of chlorine bleaching agent is put in, the cleaning effect will be better. The customer can use this procedure regularly according to the need.
RINSE & SPIN	Extra rinse with spin.
DOWN JACKET	Special care program for down jacket.
SPORTWEAR	Washing the activewear.
15' QUICK	This procedure is suitable for washing few and not very dirty clothes quickly.

Wash Programs & Special Features

Optional Functions [Table 1]

PROGRAM	I	II	*	TEMP.	SPIN	DELAY
COTTON		●	○	○	○	○
SYNTHETIC		●	○	○	○	○
BABY CARE		●	○	○	○	○
BEDLINEN		●	○	○	○	○
MIX		●	○	○	○	○
COLORALIVE		●	○	○	○	○
SPIN ONLY					○	○
DRUM CLEAN						○
COTTON ECO		●	○	○	○	○
DOWN JACKET		●	○	○	○	○
SPORT WEAR		●	○	○	○	○
15' QUICK		●	○	○	○	○
DELICATE		●	○	○	○	○
WOOL		●	○	○	○	○
RINSE&SPIN					○	○

● Means must ○ Means optional

Note!

- The parameters in this table are only for user's reference. The actual parameters may be different with the parameters in above mentioned table.

Note for Table 1

- This washing machine doesn't have prewash function, so there is no need to add detergent in "case I"

Note for Table 2

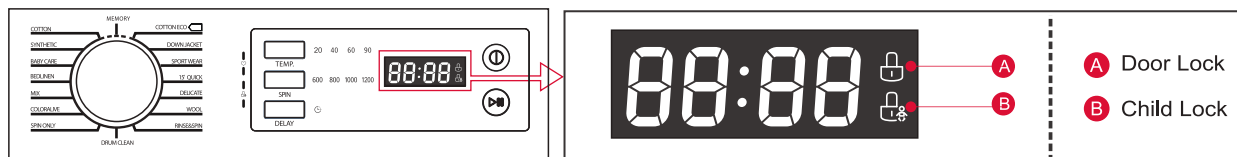
- Energy test program: Cotton 60°C, Speed: the highest speed; Other as the default. Half load for 6.0Kg/7.0Kg machine: 3.0Kg/3.5kg.
- "Cotton 60°C" are the "standard cotton 60°C" programme and the standard washing programs to which the information in the label and the fiche relates, and it is suitable to clean normally soiled cotton laundry and that it is the most efficient programmes in terms of combined energy and water consumptions for washing that type of cotton laundry, that the actual water temperature may differ from the declared cycle temperature.
- The parameters in this table are only for user's reference. The actual parameters may be different with the parameters in above mentioned table.

Washing Programmes [Table 2]

Programme	Load(kg)			Temp.(°C)	Time		
	7.0	7.5	8.0		Default	7.0	7.5
COTTON	7.0	7.5	8.0	40	2:40	2:40	2:40
SYNTHETIC	3.5	3.75	4.0	40	2:20	2:20	2:20
BABY CARE	7.0	7.5	8.0	60	1:45	1:45	1:45
BEDLINEN	4.0	4.5	5.0	40	1:48	1:48	1:48
MIX	3.5	3.75	4.0	40	1:10	1:10	1:10
COLORALIVE	3.5	3.75	4.0	20	3:47	3:47	3:47
DRUM CLEAN	-	-	-	90	0:55	0:55	0:55
SPIN ONLY	7.0	7.5	8.0	-	0:12	0:12	0:12
COTTON ECO	7.0	7.5	8.0	40	2:36	2:36	2:36
DOWN JACKET	2.0	2.0	2.0	40	1:27	1:27	1:27
SPORTWEAR	2.0	2.0	2.0	20	0:45	0:45	0:45
15' QUICK	2.0	2.0	2.0	Cold	0:15	0:15	0:15
DELICATE	2.0	2.0	2.0	20	0:50	0:50	0:50
WOOL	2.0	2.0	2.0	40	1:07	1:07	1:07
RINSE&SPIN	7.0	7.5	8.0	-	0:20	0:20	0:20

Operations

■ Explanation for digital display



- A Door Lock
- B Child Lock

■ Delay



Choose the Programme Setting time

Setting the Delay function:

1. Select the programme. 2. Press the [Delay] button to choose the time (time range is 0-24 H.)
3. Press [Start/Pause] to commence the delay operation.

How to cancel the Delay function:

Press the [Delay] button until the display shows 0H. It should be pressed before starting the programme. If the programme had already started, you should press the [On/Off] button to reset the programme.

! Caution!

- If there is any break in the power supply while the machine is operating, a special memory stores the selected programme and when the power is restarted, the program will continue.

■ Power off memory

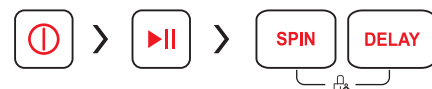


For the convenience of the users, this program remembers the washing program and function that has been used in the last time. In the next usage this machine will run the last selected programme / function automatically.

! Caution!

- This feature is useful for users, if they are using one particular programme / function selection every time.

■ Child Lock



To avoid mishandling / wrong operation by children.

Setting the Child Lock function:

1. Press [Delay] and [Spin] together for 3 seconds to activate **Child Lock**

Cancelling the Child Lock function:

1. Press [Delay] and [Spin] together for 3 seconds to deactivate **Child Lock** again

! Caution!

1. The "Child Lock" will lock all buttons except [On/Off].
2. If you want to change the program on **Child Lock** condition, you should unlock the **Child Lock** first.
3. The **Child Lock** will remain effective when the power is resumed for some models.

Operations



■ Temperature Setting

Press the button to set the temperature (20°C,30°C, 40°C,60°C,90°C)



All the lights are off means the water temp. is cold.



■ Speed Setting

Press the button to change the spin speed. Sequence of speed selection is as follows.
1200: 600-800-1000-1200



■ Memory

This feature is used to store user's preferred setting and frequently used program.
1. To activate this, Press the [Spin] and [Temp] button for 3sec. and the machine will remember the current program / setting preferences for future uses.



• Default "Memory" function is cotton.

Cleaning & Maintenances

Cleaning & Care

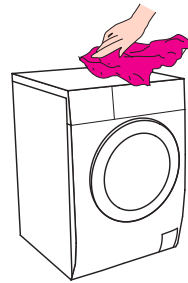
WARNING!

- Before your cleaning starts, please unplug the machine & close the tap.

Cleaning the Cabinet

Proper cleaning of the washing machine can extend its working life.

The surface can be cleaned with diluted non-abrasive neutral detergents when necessary. If there is any water overflow, use wet cloth to wipe it off immediately. No sharp objects should be used.



NOTE!

- Formic acid & its diluted solvents or equivalent should not be used, such as alcohol, solvents or chemical products, etc.

Cleaning the Drum

If rust occurs inside the drum by the metal articles, they shall be removed immediately with chlorine-free detergents.

NOTE!

- Don't put clothes in the washing machine during the drum cleaning cycle.

Cleaning the Door Seal & Glass

Wipe the glass & seal after each wash to remove lint & stains. If lint builds up it can cause leakage.

Before washing, please do take out coins, keys and other hard objects from the pockets and zip up clothes tightly to prevent them



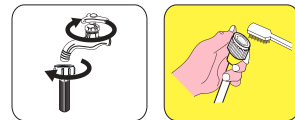
Cleaning the Inlet filter

NOTE!

- Inlet filter must be cleaned if there is less water pressure.

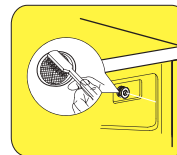
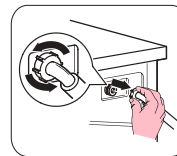
Washing the filter:

1. Close the tap.
2. Remove the water supply pipe from the tap.
3. Clean the filter.
4. Reconnect the water supply pipe.



Washing the filter in washing machine:

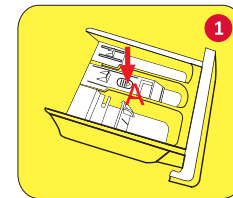
1. Remove the inlet pipe from the backside of the washing machine.
2. Pull out the filter with long nose pliers & reinstall it back after being washed.
3. Use brush to clean the filter.
4. Reconnect the inlet pipe.



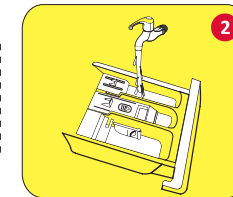
Cleaning & Maintenances

Clean the Detergent Dispenser

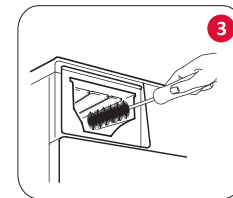
1. Press the arrow location on softener cover inside the dispenser drawer.
2. Lift the clip up, take out softener cover & wash all grooves with water.
3. Restore the softener cover & push the drawer into position.



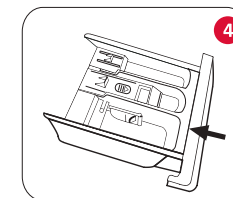
Pull out the dispenser drawer and press A



Clean the dispenser drawer under water



Clean inside the recess with an old tooth brush



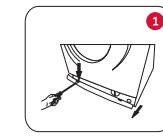
NOTE!

- Don't use alcohol, solvents or chemical products to clean the machine.

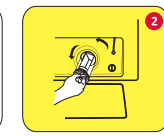
Cleaning the Drain Pump Filter

WARNING!

- Be careful of hot water.
- Allow detergent solution to cool down.
- Unplug the machine to avoid electrical shock after washing.
- Drain pump filter can filter the yarns & small foreign matters through washing.
- Clean the filter periodically to ensure proper operation of washing machine.



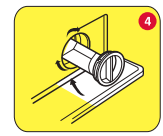
Open the Service filter



Open the filter by turning it counter clockwise



Remove extra matter



Close the lower cover cap

CAUTION!

- Make sure that the valve cap & emergency drain pipe are reinstalled properly, cap plates should be inserted aligning to hole plates otherwise water may leak.
- Some machines don't have emergency drain pipe, rotate lower cover cap directly to make water run into basin.
- When the appliance is in use & depending on the program selected there can be hot water in the pump. Never remove the pump cover during a wash cycle, always wait until the appliance has finished the cycle & is empty. When replacing the cover, ensure it is securely re-tightened.

Trouble Shooting

The start of the appliance does not work or it stops during operation.
First try to find a solution to the problem, If not, contact the Midea authorised service centre.

Description	Reason	Solution
Washing machine cannot start up	Door is not closed properly	Restart after the door is closed Check if the clothes is stuck
Door can't be opened	Washer's safety protection design is working	Disconnect the power, restart the product
Water leakage	The connection between inlet pipe or outlet hose is not tight	Check and fasten water pipes Clean up outlet hose
Detergent residues in the box	Detergent is dampened or agglomerated	Clean and wipe the detergent box
Indicator or display does not light	Disconnect the power PC board or harness has connection problem	Check if the power is shut down and the power plug is connected correctly
Abnormal noise	-	Check if the fixing (bolts) have been removed Check it's installed on a solid and level floor

Description	Reason	Solution
E30	Door is not closed properly	Restart after the door is closed Check if the clothes is stuck
E10	Water injecting problem while washing	Check if the water pressure is too low Straighten the water pipe Check if the inlet valve filter is blocked
E21	Overtime water draining	Check if the drain hose is blocked
E12	Water overflow	Restart the washer
EXX	Others	Please try again first, call up service line if there are still troubles

Note!

- After the check, activate the appliance. If the problem occurs or the display shows other alarm codes again, contact the service.

Technical Specifications

Model	TW-BJ80S2-IND	TW-BJ85S2-IND	TW-BJ90S2-IND
Rated Power Supply	220~240V / 50Hz		
Rated Power	1900W		
Rated Capacity	7.0 Kg	7.5 Kg	8 Kg
Spin Speed (Maximum)	1200 RPM	1200 RPM	1200 RPM
Temperature (Maximum)	90°C		
Net Weight	61 Kg	61 Kg	68 Kg
Applicable Water Pressure	0.05-1MPa		
Net Dimensions (WxDxH) mm	595x530x850	595x530x850	595x600x850



E-waste Management Guidelines

PERTAINING TO THE E-WASTE RULES

Proper Handling and / or Recycling of the Washing Machines

Under the E-Waste (Management & Handling) Rules, 2011 (hereafter referred to as the "E-Waste Rules"), it is incumbent for all consumers, including the purchaser of this washing machines, to properly recycle and dispose of all electrical and electronic equipment through authorized recyclers.

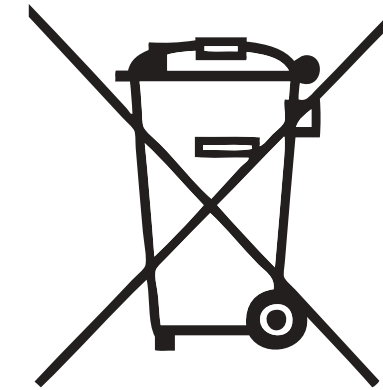
E-Waste has been defined as "waste electrical and electronic equipment, whole or in part or rejects from their manufacturing and repair process, which are intended to be discarded".

E-Waste contains various hazardous materials like lead, mercury, cadmium, hexavalent chromium, polybrominated biphenyls and polybrominated diphenyls ethers. Hence, improper handling and disposal of e-waste releases these hazardous material in the environment causing pollution, contamination of soil and water and various health hazards.

Through, the product purchased by you is ROHS compliant & does not contain any hazardous material above the prescribed limit under the E-Waste Rules, it is imperative that the product should be handled with utmost caution and as per the guidelines mentioned in this manual including the following Do's and Don'ts :-

Do's	Don't's
Hand over the E-Waste to the Company / Authorised recycles.	Never sell the E-waste to any unauthorized agencies, scrap dealer/kabadiwalahs.
E-Waste should never be thrown in household bins.	Never throw E-Waste in bins as part of household waste.
Keep the product in isolated area, after it becomes non-functional/un-repairable so as to prevent its accidental breakage.	Never keep E-Waste in open and exposed area, accessible by all.
The product should not be opened by the User himself/herself, but only by authorised service personnel.	Never open/dismantle any E-waste on your own.

E-waste Management Guidelines



The above marking/symbol on the product or carton indicates that the product and its accessories/parts (e.g. remote controller, batteries, spare parts etc.) should not be disposed off with other household waste at the end of their working life. Please separate these items from other types of waste and recycle them responsibly for conservation of the environment and collective well-being.

E-Waste Recycling Program

We have tied up with government approved E-waste recycles for facilitating the collection of E-waste from our channel partners and customers for recycling. You are simply required to call our toll free number **1800 1039 119** and register your request for collection of E-waste. Once your request is received, the representatives of the authorized recycles would collect the E-waste from your house/premises after paying the value of the same to you. For more details and information on our E-Waste Recycling Program kindly visit our website.

Product Warranty Terms & Conditions

(Fully-Automatic Washing Machine)

CARRIER MIDEA INDIA PRIVATE LIMITED (hereinafter referred to as the "Company"), hereby warrants to the original domestic purchaser (here in after called the "Purchaser") of the product (as detailed within the Warranty Registration Card and here in after referred to as the "said unit") that the said unit is free from defects in materials and workmanship under normal use and service and under specified voltage conditions, and that during a period of twenty four (24) months commencing from the date of invoice, as provided in the Warranty Registration Card, the Company undertakes to repair or to replace as it deems fit in sole discretion, free of charge, any part or parts of the said unit (including accessories) which proves to be defective in materials or workmanship.

CONDITIONS OF WARRANTY

1. The warranty shall be valid and that the Purchaser can have the benefit of this warranty, if and only if the Purchaser has duly intimated the fault to the Company or its authorized dealer and that the unit is in the possession of and is used by the Purchaser.
2. The Warranty will shall be valid only for the said period as specified above, irrespective of whether the said unit has been in use or not for any reason whatsoever, or the unit is moved from one location to another. The warranty period specified above shall include time taken for repairs, replacements, testing of unit, technical breakdowns, transit time etc. This warranty shall automatically expire by efflux of time on completion of the period indicated herein above and no notice of such expiry will be given by the Company.
3. This warranty shall stand automatically terminated in the event of the said unit being serviced, repaired, installed, de-installed, re-installed or otherwise attended to by and person or organization or agency or by the Purchaser himself (by whatever name called), other than the authorized representative / Dealer of the Company.
4. Extended Wash Motor Warranty (Applicable on select Model : Please check with Company Customer Care to confirm applicability of the special motor warranty) For select models, or as a special time-bound activity, the company may extend the warranty on wash motor for a specified period following the expiration of the entire unit warranty. The Company shall continue to warrant the wash motor to be free from defects in material and workmanship under normal use and service and under specified voltage conditions. This warranty covers only the wash motor. During the additional warranty period, it does not cover any part such as overload protector, relay, electronics etc. Standard visiting charges will be applicable within the municipal limit of town where company has an Authorized Service Centre, Service outside municipal limit will attract to and fro traveling, other incidental expenses in addition to standard visiting charges, as prevailing from time to time. During the warranty period, only the parts replaced or repaired shall be free of costs, but service charges shall always be payable by the customer. Expendable items are excluded from this warranty and are on chargeable basis. This warranty is subject to use of product with input voltage of 230 V +/-10%. We recommend use of approved make of voltage protection devices. The terms and conditions as set out below shall form the basis of this warranty.

5. Parts of the units replaced or repaired under the terms of this warranty are warranted only for the remaining period of the original warranty period.
6. For attending any service call under this warranty beyond the Municipal limits of the locality in which the authorized representative/dealer is situated (outstation locations), all to and fro traveling and other incidental expenses as prevailing from time to time incurred in connection with the visit of the service personnel, technicians etc., shall be borne by the Purchaser and shall be payable in advance. Additionally, all expenses incurred by the authorized representative/dealer in collecting the unit or any part thereof from such outstation locations and its return to the original location shall be borne exclusively by the Purchaser.
7. Any damage/fault caused due to sabotage, improper handling or treatment, carelessness, accident, fire, flood, earthquake or any act of God, or any corrosive action on the original fittings, valves etc. for whatever reason, shall not be covered under this warranty.
8. While the Authorized Dealers/Company will make every effort to carry out repairs/replacement of parts under this warranty as soon as the complaint is received, it is expressly made clear that the Authorized Dealer/Company shall not be liable to do so within any specified period of time.
9. It shall be absolute discretion of the Company to (a) effect the repairs or replacement of parts whether at the site of installation or at any service center; and (b) have the job attended to either by the Company's service personnel or of its authorized dealers. (c) This warranty shall be strictly limited to the repairs or replacement of defective parts specified in the warranty. This warranty shall not cover any consequential of resulting liability. (d) This warranty shall not, in any case, extend towards payments of an monetary consideration whatsoever of replacement or return of the product. (e) The company may repair/ supply parts free of cost during the warranty period. This warranty does not cover any Excise Duty, Central or Sales Tax, Octroi and other local taxes or levies on the components/parts. (f) The parts shall be replaced by functionally operating equivalent material only and not necessarily brand new ones and are to be different from the one originally fitted. The parts thus removed shall be taken back by the company. (g) The company reserves the right to retain any part or components replaced at its sole discretion during the warranty period.
10. This warranty is in the nature of and for the purposes as set forth herein above and in particular, the Company shall not in any event be liable for any direct, indirect, incidental or consequential loss or damages to either the said purchaser and/or his property or any other third party in course of attending to any complaint.
11. Limitation of Warranty: Company shall not be responsible for providing any warranty under the following situations:

Product Warranty Terms & Conditions

- i. If the appliance is not used in accordance with manufacturer's instruction given in the "User's Manual".
- ii. Service engineers visits to place of product installation to teach/instruct on how to use the product
- iii. Noise or vibration that is considered normal for product operations like warning beeps, water drain sound, spin sound etc.
- iv. Correcting the installation, for example leveling the product, adjustment of inlet tap/drain hose etc
- v. Normal maintenance which is recommended by the user's manual
- vi. Removal of foreign objects / substances from the machine, including the pump and inlet hose filter for example grit, nails, buttons etc.
- vii. Replace fuses in or correct house wiring or correct house plumbing
- viii. If the product is used for commercial purpose, it is not warranted (example : Public places such as public bathroom, lodging house, dormitory etc)
- ix. Any damage caused by accident, mishandling, tampering with installation, or negligent in following instructions of the user manual issued by the Company. If the products has been installed/serviced / repaired/ opened or tampered by any unauthorized personnel.
- x. Any damage caused by power surges and dips, improper electrical circuit outside the unit or by any defective electrical supply. If defects arise/caused by accidents, alteration, misuse, substitution of original components with spurious/non-genuine components attacked by household pest/ rodent, fire, flood, earthquake, lightning and/or any other act of God/ natural calamities.
- xi. At any time, during the currency of the warranty period, if any part of the unit is tampered with, altered, repaired or serviced by any unauthorized person, not being the authorized representative of the Company or its authorized dealers.

xii. If defects arising with optional accessories like trolleys, rat mesh, machine cover, on-line filter, inlet/ exhaust extension hoses, tap adapter, extended power supply cable, adjustment feet cover, etc. thereof

xiii. The serial number on the unit or any part thereof is damaged, defaced, altered, obliterated, or tampered with or removed for any reason whatsoever.

xiv. If sea water or any substandard detergent has been used in the appliance.

xv. The product is shifted outside India

xvi. Damage to the product due to operation in an abnormally corrosive alkaline / acidic atmosphere. Product/Parts is found defective if the product is installed/operated in abnormally corrosive alkaline / acidic atmosphere or near muddy sewages because toxic gases are harmful for the product.

xvii. This warranty does not cover any type of painting, plating including rusting etc., or defects thereof.

xviii. Plastic & Glass parts such as door, Lid assembly, Control Panel, Window, Knobs, Escutcheon Cabinet, Dispenser assembly, Drain Pipe, Lint filter, Wheels / Foot etc. are also not covered in warranty.

12. None of the employees and/or Authorized dealers of the Company have the authority whatsoever to vary the terms and conditions of this warranty.
13. This warranty shall be deemed to have been issued at Gurgaon in the State of Haryana, and Courts at Gurgaon shall have exclusive jurisdiction on matters covered by or following from this warranty, and the Purchaser alone shall have cause of action arising out of the transaction.

Notes

**THIS WARRANTY IS NOT TRANSFERABLE AND
APPLIES TO ORIGINAL PURCHASER ONLY.**

**COMPLETE THIS RECORD AND KEEP IT
TOGETHER WITH YOUR PURCHASE DOCKET IN
A SAFE PLACE YOU WILL HAVE TO PRODUCE.**

**SHOULD YOU REQUIRE SERVICE UNDER THE
TERMS OF THIS WARRANTY,
PLEASE CONTACT US.**



Notes

Memo

Warranty Card

TOSHIBA

TOSHIBA COPY

Invoice no.: _____ Date of Purchase.: _____

Customer Name.: _____

Address.: _____

Product Name.: _____ Model No.: _____

Sr. No.: of the Unit: _____

Dealer Name & Address.: _____

Signature of the Dealer.: _____ Dealer's Seal.: _____

Carrier Midea India Pvt.Ltd.

TOSHIBA

CUSTOMER COPY

Invoice no.: _____ Date of Purchase.: _____

Customer Name.: _____

Address.: _____

Product Name.: _____ Model No.: _____

Sr. No.: of the Unit: _____

Dealer Name & Address.: _____

Signature of the Dealer.: _____ Dealer's Seal.: _____

Carrier Midea India Pvt.Ltd.