



IMMORTAL IM400

Thank you for choosing boAt IMMORTAL IM400, 7.1 Channel USB Gaming Headphones meant for PC. This manual is meant to guide you through the functionality of the wired over-ear gaming headphones. IM400 virtual series gaming headphones is the essential headphones that focuses on what truly matters **"Balanced and Virtual Surround sound"** for all your gaming and music needs. We strongly advise that this manual is thoroughly read before use, and referred to in times of difficulty, so that you can always be easily guided towards the shores of gaming bliss.

Let's attack!

What's in the box?

- boAt IM400 Gaming Headphones
- User Manual
- Warranty card

System Requirements:

- Operating Systems Windows XP/7/8/10
- One Free USB port 2.0/3.0

Technical Specifications:

Model	Immortal IM400
Speaker driver	50mm
Speaker Sensitivity	106dB±3dB at 1KHz
Speaker Impedance	24±15% Ω
Plug/connectivity	USB
LED type	Real RGB
MIC Sensitivity	-42±3 dB
MIC Impedance	2.2KΩ
MIC Pattern	Omnidirectional MIC
Cord length	2.3m ± 0.2m
Cable type	PVC
Shape	Round
7.1 application	7.1 Surround Sound

Quick Start:

- Plug your headset into computer's USB SLOT (Any 2.0/3.0)
- Adjust the volume before listening
- Adjust the microphone direction



Remote Controller:

- 1-Volume Scroll
- 2- Mic Mute: On / Off
- 3-LED Toggle Button: Switch among 5 modes (RGB Mix, Red, Green, Blue and Pink)

Downloading Application:

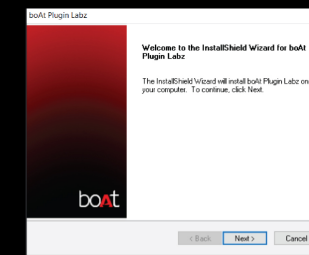
- IM400 series comes with a software "boAt Plugin Labz"
- Scan the QR code to download the boAt Plugin Labz



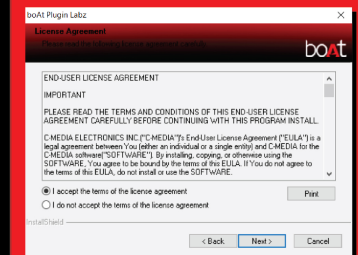
Installation:

(Note: Keep the headset plugged into computer's USB SLOT while installing)

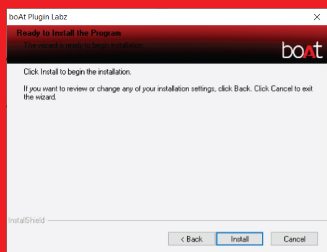
Step 1. Click 'Next' to start installation



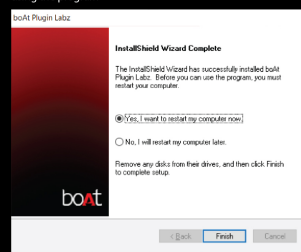
Step 2. Click 'I accept the terms of the license agreement' and then 'Next'



Step 3. Click 'Install' to begin installation



Step 4. Click 'Finish' to restart the computer before you begin using the program



Speaker Customization:



Microphone Customization:



7.1 Customization:



Safety Guidelines:

• In order to achieve maximum safety while using boAt IM400, we suggest following guidelines.

• If you have trouble operating the device and troubleshooting doesn't work, unplug the device and contact boat customer support.

• Do not try to fix the device by yourself anytime (doing so will void your warranty)

• Keep the device away from liquid, humidity and moisture.

• Listening to excessively loud volumes over extended periods of time can damage your hearing. We recommend that you reduce the volume to a comfortable level when listening for prolonged periods of time. Take good care of your hearing.

Maintenance and Use:

The boAt IM400 requires minimum maintenance to keep it in best condition. Once a month we recommend you unplug the device from the computer and clean it using a soft cloth or cotton swab.